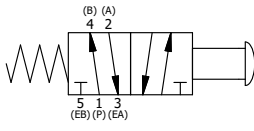


POSITION GASKET ON END OF VALVE SO MOUNTING HOLES ALIGN, BOTH ENDS (SIDE 'A' SHOWN)

| FLG | QTY | PART NO | DESCRIPTION   |
|-----|-----|---------|---|
| 14  | 2   | V-212   | SCREW, #2 X 3/16 DRIVE, TYPE U, OVAL HEAD, STAINLESS STEEL            |
| 13  | 1   | AN-114  | NAMEPLATE, BLANK, FOR VALVES WITH SPRINGS OR DETENTS                  |
| 12  | 1   | V-501   | NUT - PANEL MOUNT, YELLOW BRASS, 1/4" & 3/8" VALVE                    |
| 11  | 4   | V-162   | SCREW, 10-24 X 5/8, SOCKET HEAD CAP                                   |
| 10  | 1   | V-71    | KNOB, BLACK, PALM, (BRASS 5/16-18 INSERT), 1-13/16 DIA X 1-3/8 HEIGHT |
| 9   | 1   | PBS3    | STUD - PALM, STANDARD, 1/4" & 3/8" VALVE                              |
| 8   | 1   | PEC3-9  | END CAP, PALM, PANEL MNT, 303 STAINLESS STEEL, 1/4" & 3/8" VALVE      |
| 7   | 1   | S3      | SPOOL - STANDARD, 2 POS, CLSD CTR, 1/4" & 3/8" VALVE                  |
| 6   | 1   | CS3-2   | SPRING - RETURN, (HO & KO) 1/4" & 3/8" VALVES                         |
| 5   | 1   | SEC3    | END CAP, 304 STAINLESS STEEL, 1/4" & 3/8" VALVE                       |
| 4   | 4   | V-37    | SCREW, 10-24 X 1/2, SOCKET HEAD CAP                                   |
| 3   | 2   | ECG3    | GASKET - END CAP, 1/4" & 3/8" VALVE                                   |
| 2   | 6   | V-39    | O-RING, VITON, STD BODY, 1/4" & 3/8" VALVES                           |
| 1   | 1   | B3-2E   | BODY - SOLID, PLAIN, NO PILOTS, ANODIZED, 3/8" SIDE PORT VALVE        |

NOTES:  
1) ALWAYS GIVE VALVE MODEL AND PART NUMBER WHEN ORDERING PARTS.



|  |                 |  |                 |  |
|--|-----------------|--|-----------------|--|
| LIMITS ON DIMENSIONS<br>UNLESS OTHERWISE SPECIFIED                       |                 | 2-PL DECIMAL ± .01<br>3-PL DECIMAL ± .005<br>FRACTIONAL ± 1/64<br>ANGULAR ± 1/2° |                 | <b>AAA PRODUCTS INTERNATIONAL</b><br>7114 Harry Hines Blvd<br>Dallas, TX 75235 |
| DRAWN: RMcKenna  | DATE: 5/10/2015 | CHECKED: KWaite  | DATE: 5/17/2015 |  |
| SCALE: 1 : 1   | SHEET: 1 OF 1   | RELEASED: HWomack  | DATE: 5/17/2015 |  |
| TITLE:<br><b>3/8" SIDE PORT, PALM, 2 POS,<br/>SPRING RTRN, PANEL MNT</b> |                 | PART NO.:  | <b>KO3R</b>     | REV.:  |

THE INFORMATION CONTAINED WITHIN THIS DOCUMENT IS PROPRIETARY TO AAA PRODUCTS AND MAY NOT BE DISCLOSED WITHOUT PRIOR WRITTEN CONSENT

D:\Engineering\product\Valve Assembly\palm\KO3R.dwg