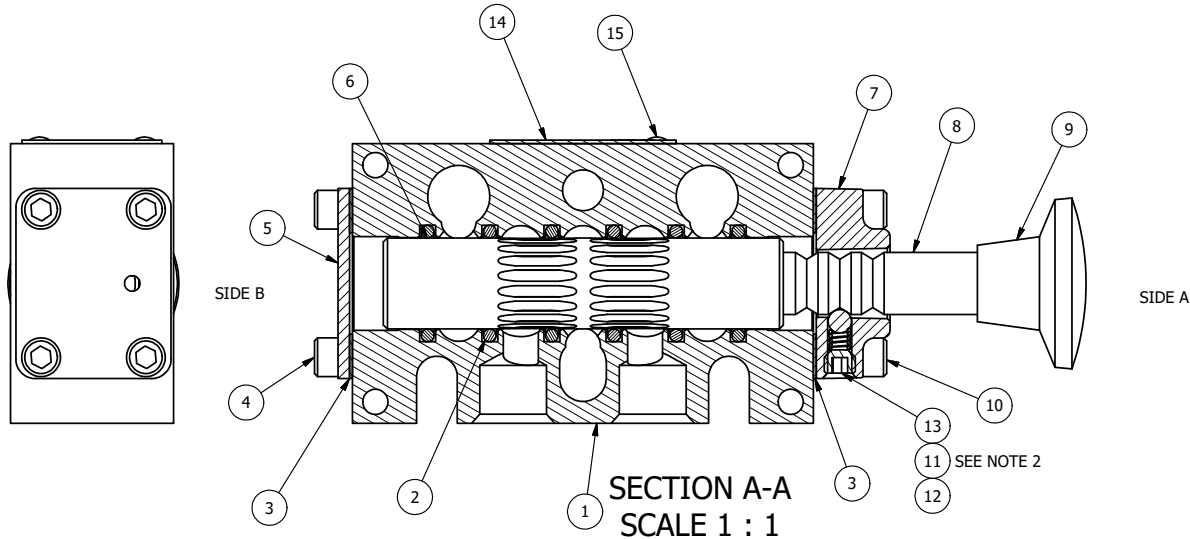


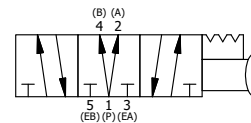
POSITION GASKET ON END OF VALVE TO SEAL PILOT HOLE IF PRESENT, BOTH SIDES (SIDE 'B' SHOWN)



NOTES:

- 1) ALWAYS GIVE VALVE MODEL AND PART NUMBER WHEN ORDERING PARTS.
- 2) LUBRICATE DETENT BALL, SPRING AND STUD.

|     |     |         |   |
|-----|-----|---------|---|
| 16  | 3   | V-110   | O-RING, BUNA-N, 70 DURO, AS-114, (REF 5/8 X 13/16 X 3/32), 1/4" SLEEVE, 1/2" SUB, STACK |
| 15  | 2   | V-212   | SCREW, #2 X 3/16 DRIVE, TYPE U, OVAL HEAD, STAINLESS STEEL                              |
| 14  | 1   | AN-114  | NAMEPLATE, BLANK, FOR VALVES WITH SPRINGS OR DETENTS                                    |
| 13  | 1   | V-21    | SCREW, 1/4-20 X 3/16, SOCKET SET, CUP POINT   |
| 12  | 1   | DS3     | SPRING - DETENT, 1/4" & 3/8" VALVE  |
| 11  | 1   | V-14    | BALL, CHROME STEEL 3/16 DIA, GRADE 25, FOR DETENT                                       |
| 10  | 4   | V-38    | SCREW, 10-24 X 3/4, SOCKET HEAD CAP   |
| 9   | 1   | V-520   | KNOB, BLACK (BRASS 5/16 -18 INSERT), 5/16-18 X 7/16 THREAD, 1-3/8 DIA X 7/8 HEIGHT      |
| 8   | 1   | PBS3-3  | STUD - PALM, 3 POS. DETENT, 1/4" & 3/8" VALVE   |
| 7   | 1   | PEC3-3  | END CAP, PALM, DETENT, 380 AL, 1/4" & 3/8" VALVE  |
| 6   | 1   | SSH3D   | SPOOL - 'D', 3 POS, REGEN CTR, 1/4" & 3/8" VALVE  |
| 5   | 1   | SEC3    | END CAP, 304 STAINLESS STEEL, 1/4" & 3/8" VALVE   |
| 4   | 4   | V-37    | SCREW, 10-24 X 1/2, SOCKET HEAD CAP   |
| 3   | 2   | ECG3    | GASKET - END CAP, 1/4" & 3/8" VALVE   |
| 2   | 6   | V-39    | O-RING, VITON, STD BODY, 1/4" & 3/8" VALVES   |
| 1   | 1   | B3-10E  | FINISHED - SOLID BODY, UPPER PILOTS, 3/8" STACKING VALVE                                |
| FLG | QTY | PART NO | DESCRIPTION   |



|  |                 |  |                    |  |
|--|-----------------|--|--------------------|--|
| LIMITS ON DIMENSIONS<br>UNLESS<br>OTHERWISE SPECIFIED                  |                 | 2-PL DECIMAL ± .01<br>3-PL DECIMAL ± .005<br>FRACTIONAL ± 1/64<br>ANGULAR ± 1/2° |                    | <b>AAA PRODUCTS INTERNATIONAL</b><br>7114 Harry Hines Blvd<br>Dallas, TX 75235 |
| DRAWN: RMckenna  | DATE: 4/28/2015 | CHECKED: KWaite  | DATE: 5/17/2015    |  |
| SCALE: 1 : 1   | SHEET: 1 OF 1   | RELEASED: HWomack  | DATE: 5/17/2015    |  |
| TITLE:<br>3/8" STACK, PALM, 3 POS,<br>DETENT, PULL RTRN, REGEN CTR SPL |                 |  | PART NO.:<br>BKD3D | REV.:  |

THE INFORMATION CONTAINED WITHIN THIS DOCUMENT IS PROPRIETARY TO AAA PRODUCTS AND MAY NOT BE DISCLOSED WITHOUT PRIOR WRITTEN CONSENT