


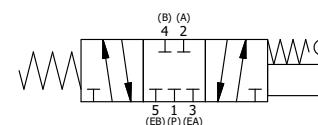
POSITION GASKET ON END OF VALVE SO  
MOUNTING HOLES ALIGN  
BOTH ENDS (SIDE 'B' SHOWN)

# NOTES:

- 1) ALWAYS GIVE VALVE MODEL, AND PART NUMBER WHEN ORDERING PARTS.
- 2) APPLY ANTI-SEIZE COMPOUND LIGHTLY TO THE FIRST 1/4" OF THE SCREW THREAD. APPLICATION SHOULD BE AROUND THE THREAD OF THE SCREW.

|     |     |              |   |
|-----|-----|--------------|---|
| 12  | 2   | V-212        | SCREW, #2 X 3/16 DRIVE, TYPE U, OVAL HEAD, STAINLESS STEEL                          |
| 11  | 1   | AN-106       | NAMEPLATE, BLANK, STAINLESS STEEL   |
| 10  | 4   | V-162-SS     | SCREW, 10-24 X 5/8, SOCKET HEAD CAP, STAINLESS STEEL                                |
| 9   | 1   | V-508-SS     | PIN, ROLL 3/16 X 5/8", 18-8 SS  |
| 8   | 1   | V-580        | KNOB, BLACK (BRASS 3/8-16 INSERT), 1" DIA BALL                                      |
| 7   | 1   | HL3-SS       | HAND LEVER, 303 STAINLESS STEEL, 1/4" & 3/8" VALVE                                  |
| 6   | 1   | HE3-SLO      | END CAP, LEVER, 303 STAINLESS, LOCKOUT, 1/4" & 3/8" VALVES                          |
| 5   | 1   | AY-HY3LOB-SS | ASSY - SPR CTR, CLSD CTR SPL, LEVER/TREADLE, SS, W/SS SPL, LO 'B', 1/4 & 3/8 VALVES |
| 4   | 4   | V-38-SS      | SCREW, 10-24 X 3/4, SOCKET HEAD CAP, 18-8 SS  |
| 3   | 2   | ECG3         | GASKET - END CAP, 1/4" & 3/8" VALVE   |
| 2   | 6   | V-39         | O-RING, VITON, STD BODY, 1/4" & 3/8" VALVES   |
| 1   | 1   | B3-2-SS      | BODY - STAINLESS STEEL, PLAIN, NO PILOTS, 3/8" SIDE PORT VALVE                      |
| FLG | QTY | PART NO      | DESCRIPTION   |

|   |  |  |  |  |  |
|---|--|--|--|--|--|
| LIMITS ON DIMENSIONS<br>UNLESS<br>OTHERWISE SPECIFIED                               |  | 2-PL DECIMAL ± .01<br>3-PL DECIMAL ± .005<br>FRACTIONAL ± 1/64<br>ANGULAR ± 1/2° |  |  <b>AAA PRODUCTS<br/>INTERNATIONAL</b><br>7114 Harry Hines Blvd<br>Dallas, TX 75235 |  |
| DRAWN: RMckenna   |  | DATE: 6/2/2022   |  | CHECKED: KWalte  |  |
| SCALE: 1 : 1  |  | SHEET: 1 OF 1  |  | RELEASED: HWomack  |  |
| DATE: 6/2/2022  |  | DATE: 6/2/2022   |  | DATE: 6/2/2022   |  |
| TITLE:<br>3/8" SIDE PORT, 3 POS.,<br>SPR CTR, CLSD CTR SPL, STAINLESS,<br>LOCKOUT B |  |  |  | PART NO.:<br>HY3LOSS   |  |
|   |  |  |  | REV.:  |  |



SECTION A-A  
SCALE 1 : 1  
VIEW FROM 3 PORT SIDE

THE INFORMATION CONTAINED WITHIN THIS DOCUMENT IS PROPRIETARY TO AAA PRODUCTS AND MAY NOT BE DISCLOSED WITHOUT PRIOR WRITTEN CONSENT