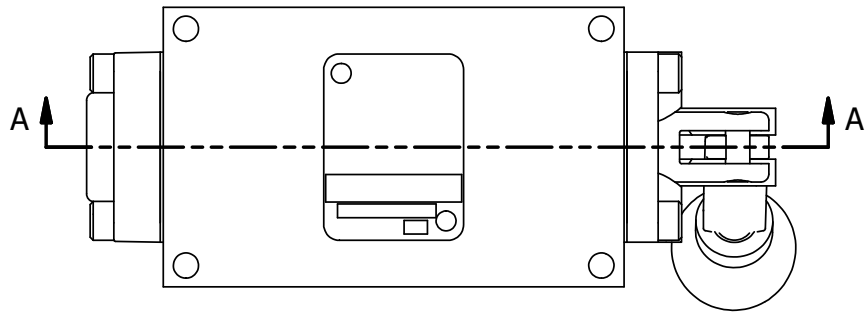
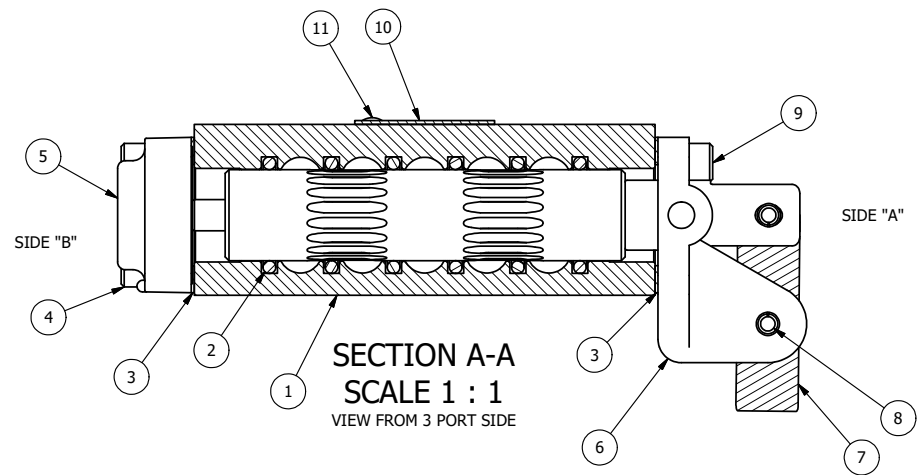


4 | 3 | 2 | 1



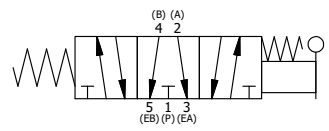
POSITION GASKET ON END OF VALVE SO MOUNTING HOLES ALIGN BOTH ENDS (SIDE 'B' SHOWN)

NOTES:  
1) ALWAYS GIVE VALVE MODEL, AND PART NUMBER WHEN ORDERING PARTS.



| FLG | QTY | PART NO   | DESCRIPTION   |
|-----|-----|-----------|---|
| 11  | 2   | V-212     | SCREW, #2 X 3/16 DRIVE, TYPE U, OVAL HEAD, STAINLESS STEEL          |
| 10  | 1   | AN-114    | NAMEPLATE, BLANK, FOR VALVES WITH SPRINGS OR DETENTS                |
| 9   | 4   | V-162     | SCREW, 10-24 X 5/8, SOCKET HEAD CAP                                 |
| 8   | 1   | V-508     | PIN, ROLL 3/16 X 5/8 ZINC PLATED STEEL FOR 1/4 FOOT ENDCAP          |
| 7   | 1   | HL3-24B20 | HAND LEVER WITH KNOB, BENT 20 DEG SIDEWAYS, 1/4" & 3/8" VALVES      |
| 6   | 1   | HE3-5     | END CAP, LEVER, 303 STAINLESS, 1/4" & 3/8" VALVE                    |
| 5   | 1   | AY-HY3G   | ASSY - SPR CTR, FLOAT CTR SPL, LEVER OR TREADLE, 1/4" & 3/8" VALVES |
| 4   | 4   | V-38      | SCREW, 10-24 X 3/4, SOCKET HEAD CAP                                 |
| 3   | 2   | ECG3      | GASKET - END CAP, 1/4" & 3/8" VALVE                                 |
| 2   | 6   | V-39      | O-RING, VITON, STD BODY, 1/4" & 3/8" VALVES                         |
| 1   | 1   | B3-2E     | BODY - SOLID, PLAIN, NO PILOTS, ANODIZED, 3/8" SIDE PORT VALVE      |

|   |                 |  |                              |  |
|---|-----------------|--|------------------------------|--|
| LIMITS ON DIMENSIONS<br>UNLESS OTHERWISE SPECIFIED  |                 | 2-PL DECIMAL ± .01<br>3-PL DECIMAL ± .005<br>FRACTIONAL ± 1/64<br>ANGULAR ± 1/2° |                              | <b>AAA PRODUCTS INTERNATIONAL</b><br>7114 Harry Hines Blvd<br>Dallas, TX 75235 |
| DRAWN: RMckenna   | DATE: 1/29/2025 | CHECKED: KWaite  | DATE: 1/29/2025              |  |
| SCALE: 1 : 1  | SHEET: 1 OF 1   | RELEASED: HWomack  | DATE: 1/29/2025              |  |
| TITLE:<br><b>3/8" SIDE PORT, LEVER, 3 POS,<br/>SPR FLOAT CTR,<br/>BNT LVR RT, HVY DTY, 180D LVR</b> |                 |  | PART NO.:<br><b>HY3GBRHT</b> | REV.:  |



4 | 3 | 2 | 1

THE INFORMATION CONTAINED WITHIN THIS DOCUMENT IS PROPRIETARY TO AAA PRODUCTS AND MAY NOT BE DISCLOSED WITHOUT PRIOR WRITTEN CONSENT

D:\Engineering\product\valves\assembly\lever\HY3GBRHT.dwg