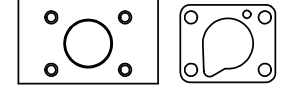
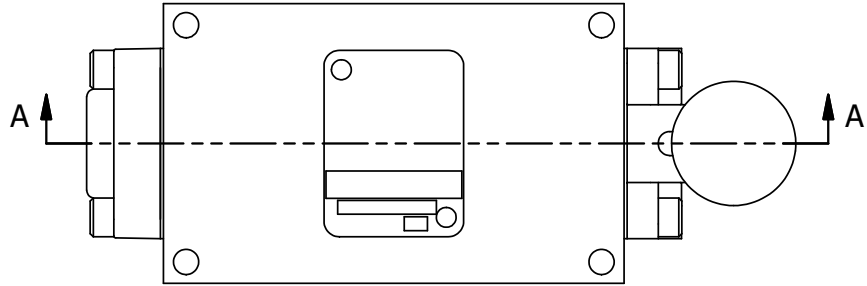
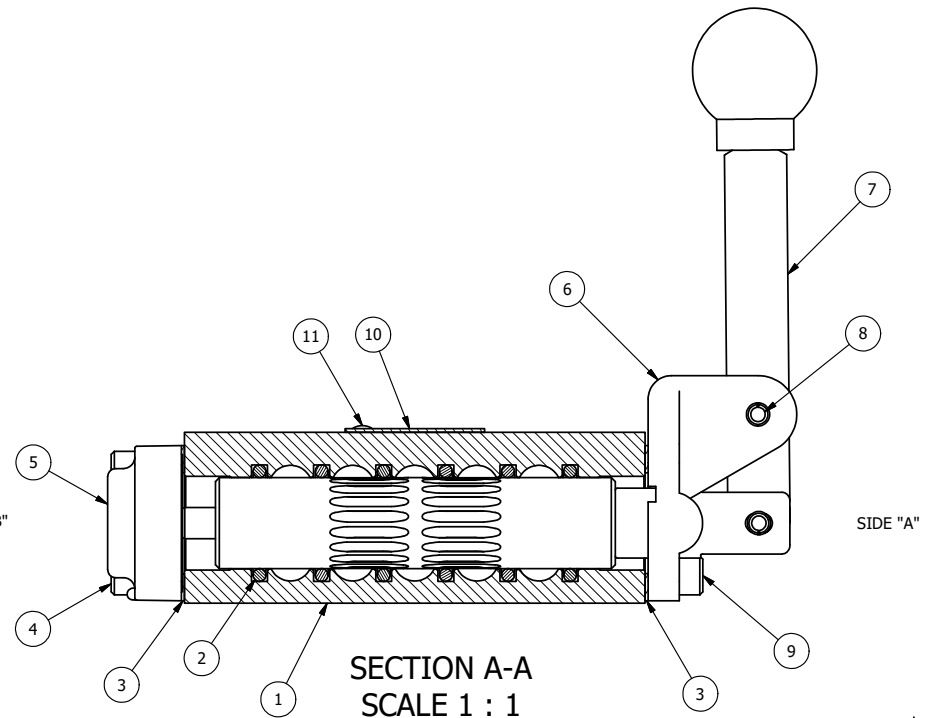


4 | 3 | 2 | 1



POSITION GASKET ON END OF VALVE SO MOUNTING HOLES ALIGN BOTH ENDS (SIDE 'B' SHOWN)

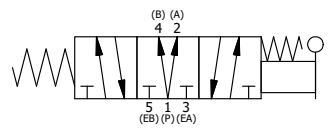
NOTES:  
1) ALWAYS GIVE VALVE MODEL, AND PART NUMBER WHEN ORDERING PARTS.



**SECTION A-A**  
**SCALE 1 : 1**  
VIEW FROM 3 PORT SIDE

| FLG | QTY | PART NO | DESCRIPTION   |
|-----|-----|---------|---|
| 11  | 2   | V-212   | SCREW, #2 X 3/16 DRIVE, TYPE U, OVAL HEAD, STAINLESS STEEL        |
| 10  | 1   | AN-114  | NAMEPLATE, BLANK, FOR VALVES WITH SPRINGS OR DETENTS              |
| 9   | 4   | V-162   | SCREW, 10-24 X 5/8, SOCKET HEAD CAP                               |
| 8   | 1   | V-508   | PIN, ROLL 3/16 X 5/8 ZINC PLATED STEEL FOR 1/4 FOOT ENDCAP        |
| 7   | 1   | HL3-24  | HAND LEVER WITH KNOB, 1/4" & 3/8" VALVE                           |
| 6   | 1   | HE3-5   | END CAP, LEVER, 303 STAINLESS, 1/4" & 3/8" VALVE                  |
| 5   | 1   | AY-HY3D | ASSY - SPR CTR, REGEN CTR SPL, LEVER OR TREADLE, 1/4 & 3/8 VALVES |
| 4   | 4   | V-38    | SCREW, 10-24 X 3/4, SOCKET HEAD CAP                               |
| 3   | 2   | ECG3    | GASKET - END CAP, 1/4" & 3/8" VALVE                               |
| 2   | 6   | V-39    | O-RING, VITON, STD BODY, 1/4" & 3/8" VALVES                       |
| 1   | 1   | B3-2E   | BODY - SOLID, PLAIN, NO PILOTS, ANODIZED, 3/8" SIDE PORT VALVE    |

|  |                |  |                    |  |
|--|----------------|--|--------------------|--|
| LIMITS ON DIMENSIONS UNLESS OTHERWISE SPECIFIED  |                | 2-PL DECIMAL ± .01<br>3-PL DECIMAL ± .005<br>FRACTIONAL ± 1/64<br>ANGULAR ± 1/2° |                    | <b>AAA PRODUCTS INTERNATIONAL</b><br>7114 Harry Hines Blvd<br>Dallas, TX 75235 |
| DRAWN: RMcKenna  | DATE: 9/3/2015 | CHECKED: KWaite  | DATE: 9/3/2015     |  |
| SCALE: 1 : 1   | SHEET: 1 OF 1  | RELEASED: HWomack  | DATE: 9/3/2015     |  |
| TITLE:<br>3/8" SIDE PORT, LEVER, 3 POS,<br>SPR CTR, LEVER SHFT, REGEN CTR SPL,<br>HVY DUTY |                |  | PART NO.:<br>HY3DH | REV.:  |



4 | 3 | 2 | 1

THE INFORMATION CONTAINED WITHIN THIS DOCUMENT IS PROPRIETARY TO AAA PRODUCTS AND MAY NOT BE DISCLOSED WITHOUT PRIOR WRITTEN CONSENT

P:\Engineering\Product Valve Assembly\HY3D\HY3DH.dwg