

POSITION GASKET ON END OF VALVE SO  
MOUNTING HOLES ALIGN  
BOTH ENDS (SIDE 'B' SHOWN)

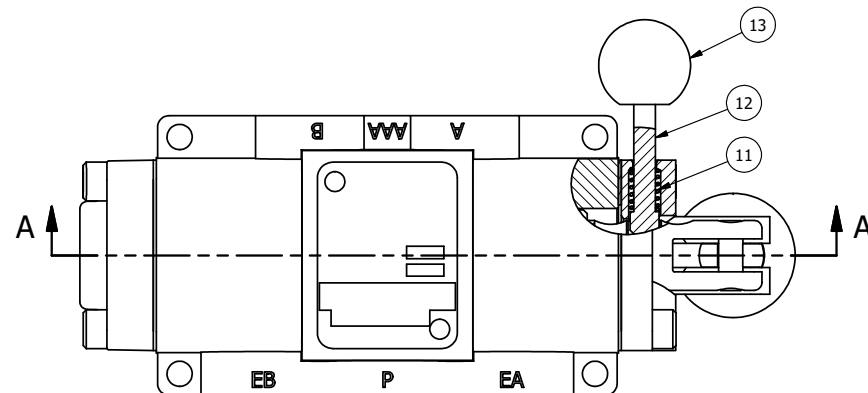
# NOTES:

- 1) ALWAYS GIVE VALVE MODEL, AND PART NUMBER WHEN ORDERING PARTS.
- 2) APPLY ANTI-SEIZE COMPOUND LIGHTLY TO THE FIRST 1/4" OF THE SCREW THREAD. APPLICATION SHOULD BE AROUND THE THREAD OF THE SCREW.

|     |     |            |   |
|-----|-----|------------|---|
| 15  | 2   | V-212      | SCREW, #2 X 3/16 DRIVE, TYPE U, OVAL HEAD, STAINLESS STEEL                            |
| 14  | 1   | AN-106     | NAMEPLATE, BLANK, STAINLESS STEEL   |
| 13  | 1   | V-175      | KNOB, BLACK, (BRASS 10-32 INSERT), 3/4 DIA BALL, PIN LOCK                             |
| 12  | 1   | V-315-SS   | PIN, PIN LOCK, 303 STAINLESS, 1/4" & 3/8" VALVE                                       |
| 11  | 1   | BBSS-1     | SPRING - BUTTON BLEEDER, STAINLESS STEEL, 1/8" NPTF                                   |
| 10  | 4   | V-162-SS   | SCREW, 10-24 X 5/8, SOCKET HEAD CAP, STAINLESS STEEL                                  |
| 9   | 1   | V-508-SS   | PIN, ROLL 3/16 X 5/8", 18-8 SS  |
| 8   | 1   | V-580      | KNOB, BLACK (BRASS 3/8-16 INSERT), 1" DIA BALL  |
| 7   | 1   | HL3-SS     | HAND LEVER, 303 STAINLESS STEEL, 1/4" & 3/8" VALVE                                    |
| 6   | 1   | HE3-5PLL   | END CAP, LEVER, PIN LOCK, LEFT, 303 STAINLESS STEEL, 1/4" & 3/8" VALVE                |
| 5   | 1   | AY-HY3E-SS | ASSY - SPR CTR, CLSD CTR SPL, LEVER/TREADLE, PINLOCK ABC, STAINLESS, 1/4 & 3/8 VALVES |
| 4   | 4   | V-38-SS    | SCREW, 10-24 X 3/4, SOCKET HEAD CAP, 18-8 SS  |
| 3   | 2   | ECG3       | GASKET - END CAP, 1/4" & 3/8" VALVE   |
| 2   | 6   | V-39       | O-RING, VITON, STD BODY, 1/4" & 3/8" VALVES   |
| 1   | 1   | B2-2-SS    | BODY - STAINLESS STEEL, PLAIN, NO PILOTS, 1/4" SIDE PORT VALVE                        |
| FLG | QTY | PART NO    | DESCRIPTION   |

|   |                |   |  |
|---|----------------|---|--|
| LIMITS ON DIMENSIONS<br>UNLESS<br>OTHERWISE SPECIFIED   |                | 2-PL DECIMAL $\pm .01$<br>3-PL DECIMAL $\pm .005$<br>FRACTIONAL $\pm 1/64$<br>ANGULAR $\pm 1/2^\circ$ | <b>AAA PRODUCTS INTERNATIONAL</b><br>7114 Harry Hines Blvd<br>Dallas, TX 75235 |
| DRAWN: RMckenna   | DATE: 6/4/2022 | CHECKED: KWalte   | DATE: 6/4/2022   |
| SCALE: 1 : 1  | SHEET: 1 OF 1  | RELEASED: HWomack   | DATE: 6/4/2022   |
| TITLE:<br><b>1/4" SIDE PORT, 3 POS.,<br/>PIN LOCK AB &amp; C, CLSD CTR SPL,<br/>STAINLESS, 180D LVR</b> |                | PART NO.:<br><b>HY2ETSS</b>   | REV.:  |

THE INFORMATION CONTAINED WITHIN THIS DOCUMENT IS PROPRIETARY TO AAA PRODUCTS AND MAY NOT BE DISCLOSED WITHOUT PRIOR WRITTEN CONSENT



SECTION A-A  
SCALE 1 : 1  
VIEW FROM 3 PORT SIDE

