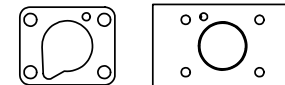
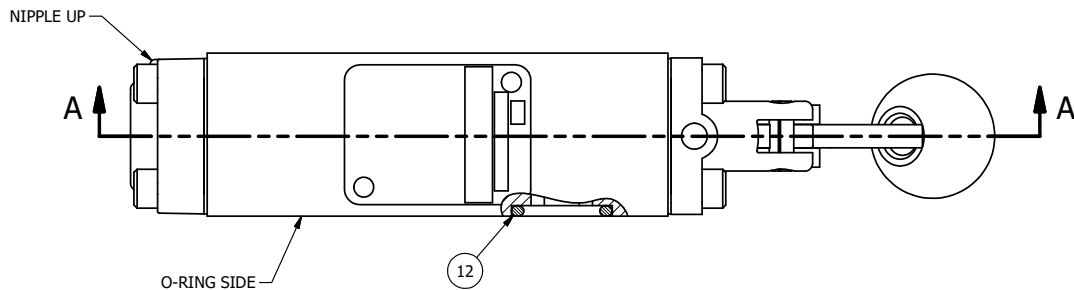
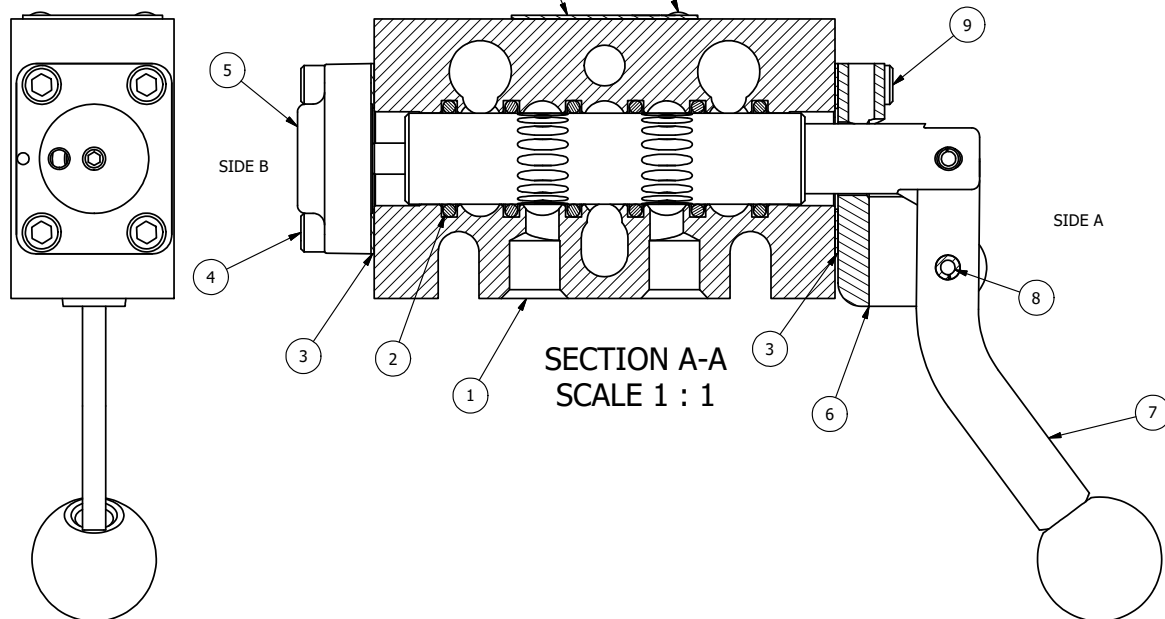


4 3 2 1



POSITION GASKET ON END OF VALVE  
TO SEAL PILOT HOLE IF PRESENT,  
BOTH SIDES (SIDE 'B' SHOWN)

NOTES:  
1) ALWAYS GIVE VALVE MODEL AND PART NUMBER WHEN ORDERING PARTS.



|     |     |          |   |
|-----|-----|----------|---|
| 12  | 3   | V-110    | O-RING, BUNA-N, 70 DURO, AS-114, (REF 5/8 X 13/16 X 3/32), 1/4" SLEEVE, 1/2" SUB, STACK |
| 11  | 2   | V-212    | SCREW, #2 X 3/16 DRIVE, TYPE U, OVAL HEAD, STAINLESS STEEL                              |
| 10  | 1   | AN-114   | NAMEPLATE, BLANK, FOR VALVES WITH SPRINGS OR DETENTS                                    |
| 9   | 4   | V-162    | SCREW, 10-24 X 5/8, SOCKET HEAD CAP   |
| 8   | 1   | V-542    | PIN, ROLL 3/16 X 1/2 ZINC PLATED STEEL FOR HE3-4 END CAP                                |
| 7   | 1   | HL3-521C | CURVED HAND LEVER WITH RED KNOB, 1/4" & 3/8" VALVE                                      |
| 6   | 1   | HE3-4    | ENDCAP - HAND OPERATOR, 303 STAINLESS, 1/4" & 3/8" STACK VALVE                          |
| 5   | 1   | AY-BHY3  | ASSY - SPR CTR, CLSD CTR SPL, HAND/FOOT, 1/4" & 3/8" STACK VALVES                       |
| 4   | 4   | V-38     | SCREW, 10-24 X 3/4, SOCKET HEAD CAP   |
| 3   | 2   | ECG3     | GASKET - END CAP, 1/4" & 3/8" VALVE   |
| 2   | 6   | V-39     | O-RING, VITON, STD BODY, 1/4" & 3/8" VALVES   |
| 1   | 1   | B2-10E   | FINISHED - SOLID BODY, UPPER PILOTS, 1/4" STACKING VALVE                                |
| FLG | QTY | PART NO  | DESCRIPTION   |

|  |                 |   |  |       |
|--|-----------------|---|--|-------|
| LIMITS ON DIMENSIONS<br>UNLESS<br>OTHERWISE SPECIFIED                                  |                 | 2-PL DECIMAL $\pm .01$<br>3-PL DECIMAL $\pm .005$<br>FRACTIONAL $\pm 1/64$<br>ANGULAR $\pm 1/2^\circ$ | <b>AAA PRODUCTS INTERNATIONAL</b><br>7114 Harry Hines Blvd<br>Dallas, TX 75235 |       |
| DRAWN: RMckenna  | DATE: 1/26/2025 | CHECKED: KWalte   | DATE: 1/26/2025  |       |
| SCALE: 1 : 1   | SHEET: 1 OF 1   | RELEASED: HWomack   | DATE: 1/26/2025  |       |
| TITLE:<br>1/4" STACK, LEVER, 3 POS,<br>SPR CLSD CTR,<br>CURVED LVR, RED KNOB, 180D LVR |                 |   | PART NO.:<br>BHY2CJT   | REV.: |

THE INFORMATION CONTAINED WITHIN THIS DOCUMENT IS PROPRIETARY TO AAA PRODUCTS AND MAY NOT BE DISCLOSED WITHOUT PRIOR WRITTEN CONSENT

P:\Engineering\Product Valves Assembly\HY2\BHY2CJT.dwg