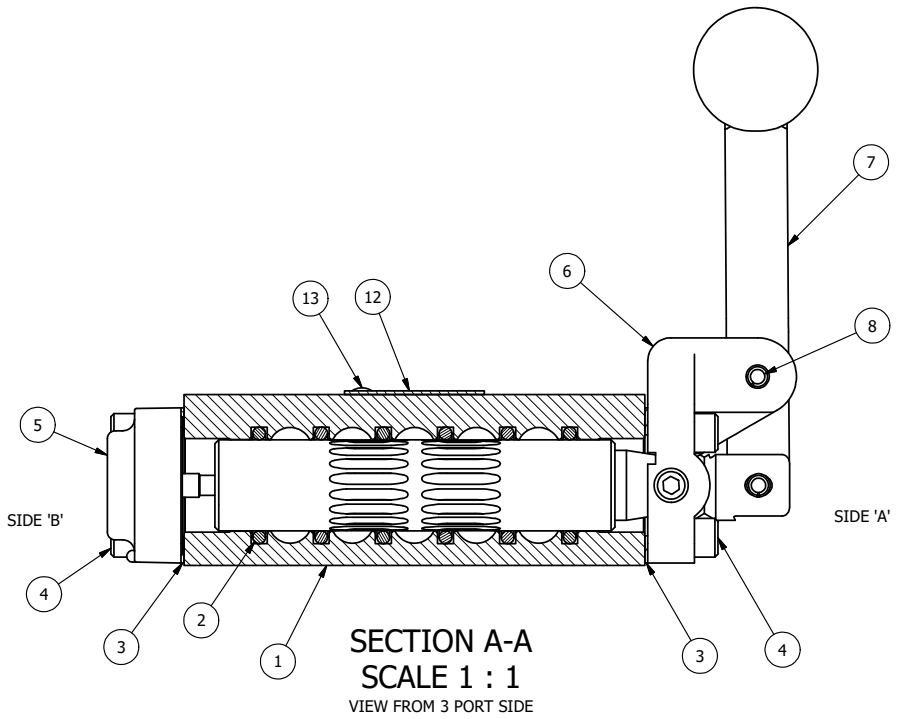


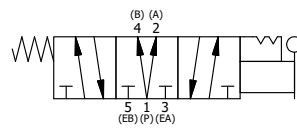
POSITION GASKET ON END OF VALVE SO MOUNTING HOLES ALIGN BOTH ENDS (SIDE 'A' SHOWN)

- NOTES:  
 1) ALWAYS GIVE VALVE MODEL, AND PART NUMBER WHEN ORDERING PARTS.  
 2) LUBRICATE DETENT BALL, SPRING AND CLEVIS.



| FLG | QTY | PART NO    | DESCRIPTION  |
|-----|-----|------------|--|
| 13  | 2   | V-212      | SCREW, #2 X 3/16 DRIVE, TYPE U, OVAL HEAD, STAINLESS STEEL                           |
| 12  | 1   | AN-114     | NAMEPLATE, BLANK, FOR VALVES WITH SPRINGS OR DETENTS                                 |
| 11  | 2   | V-14       | BALL, CHROME STEEL 3/16 DIA, GRADE 25, FOR DETENT                                    |
| 10  | 2   | DS3        | SPRING - DETENT, 1/4" & 3/8" VALVE   |
| 9   | 2   | V-21       | SCREW, 1/4-20 X 3/16, SOCKET SET, CUP POINT  |
| 8   | 1   | V-7        | PIN, ROLL 3/16 X 11/16, STEEL, FOR 1/4 THRU 1/2" HAND, FT & CAM V                    |
| 7   | 1   | HL3-521B20 | HAND LEVER WITH RED KNOB, BENT 20 DEG SIDEWAYS, 1/4" & 3/8" VALVES                   |
| 6   | 1   | HE3-3DD    | END CAP, LEVER, DOUBLE DETENT, 380 AL, 1/4" & 3/8" VALVE                             |
| 5   | 1   | AY-HX3D    | ASSY - DETENT A, SPR CTR FROM C, REGEN CTR SPL, LEVER OR TREADLE, 1/4" & 3/8" VALVES |
| 4   | 8   | V-38       | SCREW, 10-24 X 3/4, SOCKET HEAD CAP  |
| 3   | 2   | ECG3       | GASKET - END CAP, 1/4" & 3/8" VALVE  |
| 2   | 6   | V-39       | O-RING, VITON, STD BODY, 1/4" & 3/8" VALVES  |
| 1   | 1   | B3-2E      | BODY - SOLID, PLAIN, NO PILOTS, ANODIZED, 3/8" SIDE PORT VALVE                       |

|  |                |  |                             |  |
|--|----------------|--|-----------------------------|--|
| LIMITS ON DIMENSIONS<br>UNLESS OTHERWISE SPECIFIED   |                | 2-PL DECIMAL ± .01<br>3-PL DECIMAL ± .005<br>FRACTIONAL ± 1/64<br>ANGULAR ± 1/2° |                             | <b>AAA PRODUCTS INTERNATIONAL</b><br>7114 Harry Hines Blvd<br>Dallas, TX 75235 |
| DRAWN: RMckenna  | DATE: 2/8/2025 | CHECKED: KWaite  | DATE: 2/8/2025              |  |
| SCALE: 1:1   | SHEET: 1 OF 1  | RELEASED: HWomack  | DATE: 2/8/2025              | REV.:  |
| TITLE:<br><b>3/8" SIDE PORT, LEVER, 3 POS,<br/>DTNT A, REGEN SPR CTR FRM C,<br/>BNT LVR LFT, RED KNB</b> |                |  | PART NO.:<br><b>HX3DBLJ</b> |  |



THE INFORMATION CONTAINED WITHIN THIS DOCUMENT IS PROPRIETARY TO AAA PRODUCTS AND MAY NOT BE DISCLOSED WITHOUT PRIOR WRITTEN CONSENT

D:\Engineering\Products\Valves\Assembly\Level\HX3DBLJ.dwg