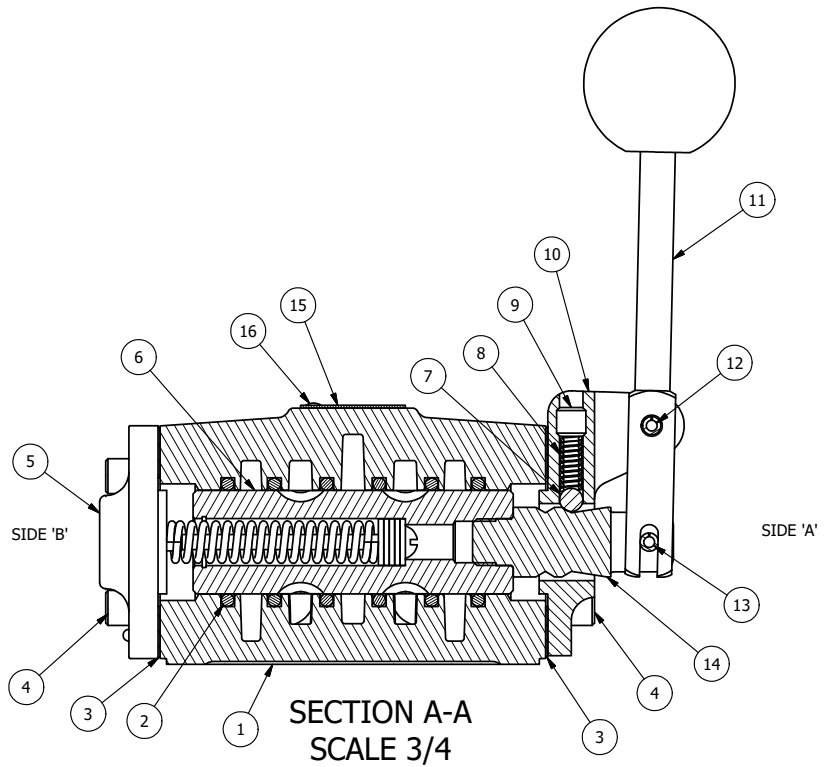


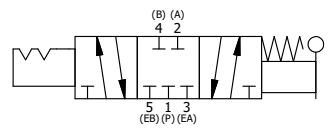
POSITION GASKET ON END OF VALVE SO GASKET COVERS PILOT HOLE BOTH SIDES (SIDE 'A' SHOWN)

NOTES:
 1) ALWAYS GIVE VALVE MODEL AND PART NUMBER WHEN ORDERING PARTS.
 2) LUBRICATE DETENT BALL, SPRING AND CLEVIS.



| FLG | QTY | PART NO | DESCRIPTION |
|-----|-----|-----------|--|
| 16 | 2 | V-212 | SCREW, #2 X 3/16 DRIVE, TYPE U, OVAL HEAD, STAINLESS STEEL |
| 15 | 1 | AN-114 | NAMEPLATE, BLANK, FOR VALVES WITH SPRINGS OR DETENTS |
| 14 | 1 | SC4-331VY | CLEVIS - 331VY, 189VY ACTION, 1/2" VALVE |
| 13 | 1 | V-7 | PIN, ROLL 3/16 X 11/16, STEEL, FOR 1/4 THRU 1/2" HAND, FT & CAM V |
| 12 | 1 | V-10 | PIN, ROLL 3/16 X 7/8, STEEL |
| 11 | 1 | HL4-9 | HAND LEVER ASSEMBLY, 1/2" VALVE |
| 10 | 1 | FE4-3 | END CAP - HAND & FOOT, DETENT, 380 AL, 1/2" VALVE |
| 9 | 1 | V-8 | SCREW, 5/16-18 X 5/16, SOCKET SET, CUP POINT |
| 8 | 1 | DS48 | SPRING - DETENT, 1/2", 3/4" & 1" VALVE |
| 7 | 1 | V-4 | BALL, CHROME STEEL 1/4 DIA. FOR DETENT |
| 6 | 1 | SSH4 | SPOOL - STANDARD, 3 POS, CLSD CTR, 1/2" VALVE |
| 5 | 1 | AY-HW4 | ASSY - SPR CTR FROM A, 189VY ACTION, 1/2" VALVE |
| 4 | 8 | V-46 | SCREW, 1/4-20 X 3/4, SOCKET HEAD CAP |
| 3 | 2 | ECG48 | GASKET - END CAP, 1/2", 3/4" & 1" VALVE |
| 2 | 6 | V-6 | O-RING, BUNA-N, 70 DURO, AS-216, (REF 1-1/8 X 1-3/8 X 1/8), 1/2" VALVES, 1" SUBPLATE |
| 1 | 1 | B4-1 | BODY, 1/2" SIDE PORT, UPPER PILOTS, ANODIZED |

| | | | | |
|--|------------------|--|------------------|--|
| LIMITS ON DIMENSIONS UNLESS OTHERWISE SPECIFIED | | 2-PL DECIMAL ± .01 3-PL DECIMAL ± .005 FRACTIONAL ± 1/64 ANGULAR ± 1/2° | | AAA PRODUCTS INTERNATIONAL 7114 Harry Hines Blvd Dallas, TX 75235 |
| DRAWN: RMckenna | DATE: 10/29/2015 | CHECKED: KWaite | DATE: 11/1/2015 | |
| SCALE: 3/4 | SHEET: 1 OF 1 | RELEASED: HWomack | DATE: 11/1/2015 | |
| TITLE: 1/2" SIDE PORT, LEVER, 3 POS, DETENT C, SPR CTR FROM A, CLSD CTR SPL (WAS 368VY) | | | PART NO.: HW4 | REV.: |



THE INFORMATION CONTAINED WITHIN THIS DOCUMENT IS PROPRIETARY TO AAA PRODUCTS AND MAY NOT BE DISCLOSED WITHOUT PRIOR WRITTEN CONSENT

P:\Engineering\product\Valve Assembly\Level HW4\HW4.dwg