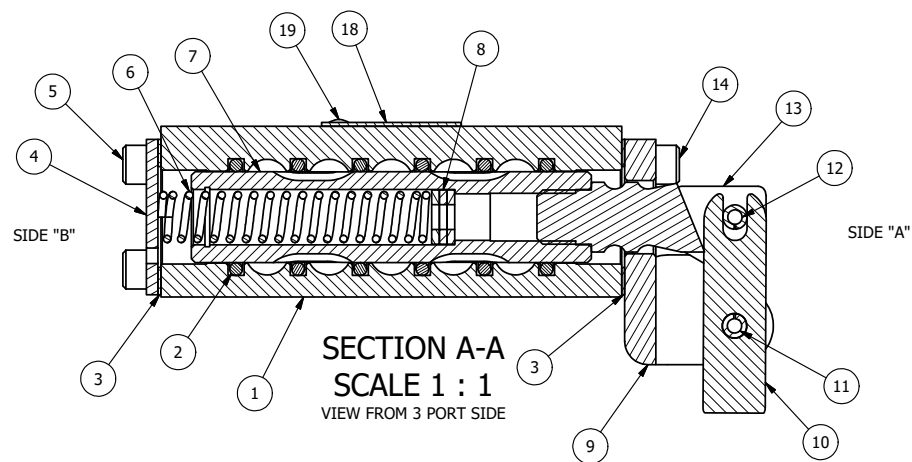


POSITION GASKET ON END OF VALVE SO  
MOUNTING HOLES ALIGN  
BOTH ENDS (SIDE 'A' SHOWN)

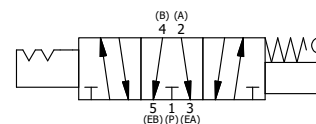
#### NOTES:

- 1) ALWAYS GIVE VALVE MODEL, AND PART NUMBER WHEN ORDERING PARTS.
- 2) LUBRICATE DETENT BALL, SPRING AND CLEVIS.



|     |     |           |   |
|-----|-----|-----------|---|
| 19  | 2   | V-212     | SCREW, #2 X 3/16 DRIVE, TYPE U, OVAL HEAD, STAINLESS STEEL            |
| 18  | 1   | AN-114    | NAMEPLATE, BLANK, FOR VALVES WITH SPRINGS OR DETENTS                  |
| 17  | 2   | V-14      | BALL, CHROME STEEL 3/16 DIA, GRADE 25, FOR DETENT                     |
| 16  | 2   | DS3       | SPRING - DETENT, 1/4" & 3/8" VALVE                                    |
| 15  | 2   | V-21      | SCREW, 1/4-20 X 3/16, SOCKET SET, CUP POINT                           |
| 14  | 4   | V-162     | SCREW, 10-24 X 5/8, SOCKET HEAD CAP                                   |
| 13  | 1   | HC3-189   | CLEVIS - HAND, STAINLESS, 189VY ACTION, 1/4" & 3/8" VALVE             |
| 12  | 1   | V-48      | PIN, ROLL 3/16 X 9/16, STEEL, ZINC PLATED                             |
| 11  | 1   | V-508     | PIN, ROLL 3/16 X 5/8 ZINC PLATED STEEL FOR 1/4 FOOT ENDCAP            |
| 10  | 1   | HL3-24B20 | HAND LEVER WITH KNOB, BENT 20 DEG SIDEWAYS, 1/4" & 3/8" VALVES        |
| 9   | 1   | HE3-5DD   | END CAP, LEVER, DOUBLE DETENT, 303 STAINLESS STEEL, 1/4" & 3/8" VALVE |
| 8   | 3   | V-43      | WASHER - SPRING CTR, 302/304 STAINLESS STEEL, 1/4" & 3/8" VALVES      |
| 7   | 1   | SSH3G     | SPOOL - 'G', 3 POS, FLOAT CTR, 1/4" & 3/8" VALVE                      |
| 6   | 1   | CS3-1     | SPRING - CENTERING, 1/4" & 3/8" VALVES                                |
| 5   | 4   | V-37      | SCREW, 10-24 X 1/2, SOCKET HEAD CAP                                   |
| 4   | 1   | SEC3      | END CAP, 304 STAINLESS STEEL, 1/4" & 3/8" VALVE                       |
| 3   | 2   | ECG3      | GASKET - END CAP, 1/4" & 3/8" VALVE                                   |
| 2   | 6   | V-39      | O-RING, VITON, STD BODY, 1/4" & 3/8" VALVES                           |
| 1   | 1   | B2-2E     | BODY - SOLID, PLAIN, NO PILOTS, ANODIZED, 1/4" SIDE PORT VALVE        |
| FLG | QTY | PART NO   | DESCRIPTION   |

|  |                |  |  |
|--|----------------|--|--|
| LIMITS ON DIMENSIONS<br>UNLESS<br>OTHERWISE SPECIFIED  |                | 2-PL DECIMAL ± .01<br>3-PL DECIMAL ± .005<br>FRACTIONAL ± 1/64<br>ANGULAR ± 1/2° | <b>AAA PRODUCTS INTERNATIONAL</b><br>7114 Harry Hines Blvd<br>Dallas, TX 75235 |
| DRAWN: RMckenna  | DATE: 2/3/2025 | CHECKED: KWalte  | DATE: 2/3/2025   |
| SCALE: 1 : 1   | SHEET: 1 OF 1  | RELEASED: HWomack  | DATE: 2/3/2025   |
| TITLE:<br>1/4" SIDE PORT, LEVER, 3 POS,<br>DTNT C, REGEN SPR CTR FRM A,<br>BNT LVR RIGHT, HVY DUTY, 180D LVR |                | PART NO.:<br>HW2GBRHT  | REV.:  |



THE INFORMATION CONTAINED WITHIN THIS DOCUMENT IS PROPRIETARY TO AAA PRODUCTS AND MAY NOT BE DISCLOSED WITHOUT PRIOR WRITTEN CONSENT

D:\Engineering\Product Valves Assembly\lever\HW2GBRHT.dwg