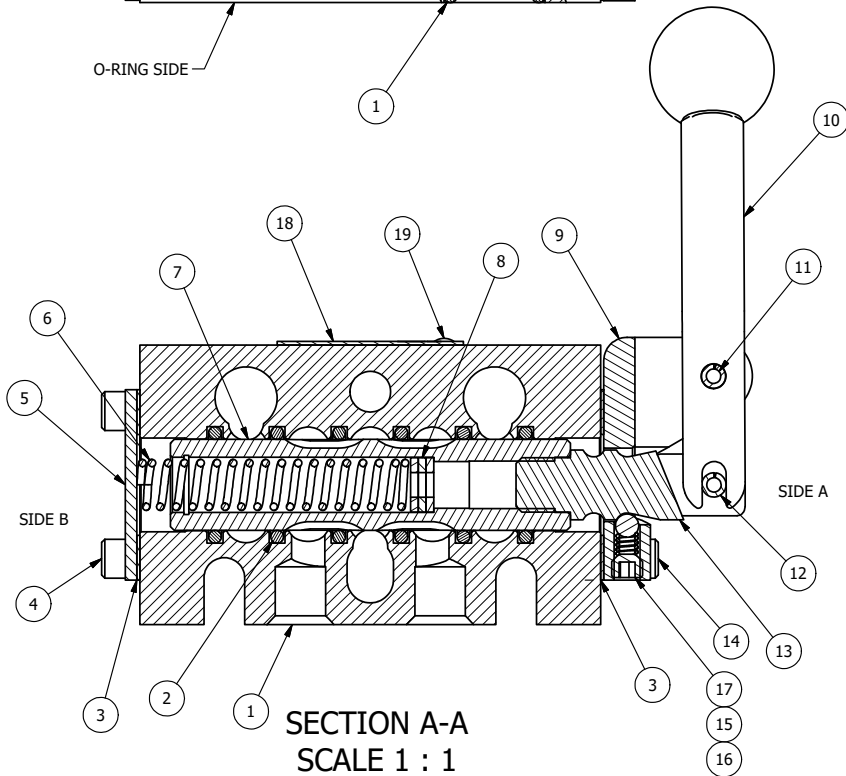
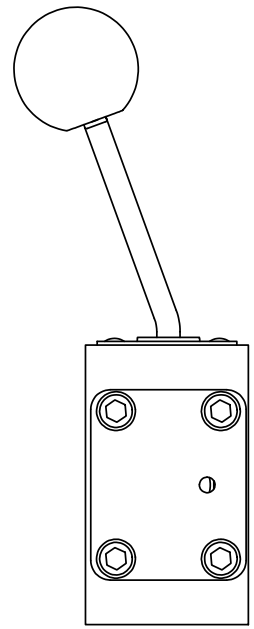


POSITION GASKET ON END OF VALVE TO SEAL PILOT HOLE IF PRESENT, BOTH SIDES (SIDE 'B' SHOWN)



NOTES:
 1) ALWAYS GIVE VALVE MODEL AND PART NUMBER WHEN ORDERING PARTS.
 2) LUBRICATE DETENT BALL, SPRING AND CLEVIS.

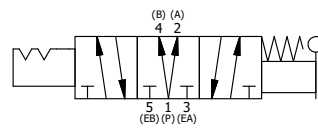
QTY	PART NO	DESCRIPTION	
20	3	V-110 O-RING, BUNA-N, 70 DURO, AS-114, (REF 5/8 X 13/16 X 3/32), 1/4" SLEEVE, 1/2" SUB, STACK	
19	2	V-212 SCREW, #2 X 3/16 DRIVE, TYPE U, OVAL HEAD, STAINLESS STEEL	
18	1	AN-114 NAMEPLATE, BLANK, FOR VALVES WITH SPRINGS OR DETENTS	
17	1	V-21 SCREW, 1/4-20 X 3/16, SOCKET SET, CUP POINT	
16	1	DS3 SPRING - DETENT, 1/4" & 3/8" VALVE	
15	1	V-14 BALL, CHROME STEEL 3/16 DIA, GRADE 25, FOR DETENT	
14	4	V-162 SCREW, 10-24 X 5/8, SOCKET HEAD CAP	
13	1	HC3-189 CLEVIS - HAND, STAINLESS, 189VY ACTION, 1/4" & 3/8" VALVE	
12	1	V-48 PIN, ROLL 3/16 X 9/16, STEEL, ZINC PLATED	
11	1	V-542 PIN, ROLL 3/16 X 1/2 ZINC PLATED STEEL FOR HE3-4 END CAP	
10	1	HL3-521B20 HAND LEVER WITH RED KNOB, BENT 20 DEG SIDEWAYS, 1/4" & 3/8" VALVES	
9	1	HE3-4D ENDCAP - HAND, DETENT, 303 STAINLESS, 1/4" & 3/8" STACK VALVE	
8	3	V-43 WASHER - SPRING CTR, 302/304 STAINLESS STEEL, 1/4" & 3/8" VALVES	
7	1	SSH3D SPOOL - 'D', 3 POS, REGEN CTR, 1/4" & 3/8" VALVE	
6	1	CS3-1 SPRING - CENTERING, 1/4" & 3/8" VALVES	
5	1	SEC3 END CAP, 304 STAINLESS STEEL, 1/4" & 3/8" VALVE	
4	4	V-37 SCREW, 10-24 X 1/2, SOCKET HEAD CAP	
3	2	ECG3 GASKET - END CAP, 1/4" & 3/8" VALVE	
2	6	V-39 O-RING, VITON, STD BODY, 1/4" & 3/8" VALVES	
1	1	B2-10E FINISHED - SOLID BODY, UPPER PILOTS, 1/4" STACKING VALVE	
FLG	QTY	PART NO	DESCRIPTION

LIMITS ON DIMENSIONS
 UNLESS OTHERWISE SPECIFIED
 2-PL DECIMAL ± .01
 3-PL DECIMAL ± .005
 FRACTIONAL ± 1/64
 ANGULAR ± 1/2°

AAA PRODUCTS INTERNATIONAL
 7114 Harry Hines Blvd
 Dallas, TX 75235

DRAWN: RMckenna DATE: 2/2/2025 CHECKED: KWaite DATE: 2/2/2025
 SCALE: 1 : 1 SHEET: 1 OF 1 RELEASED: HWomack DATE: 2/2/2025

TITLE: 1/4" STACK, LEVER, 3 POS, DTNT C, REGEN SPR CTR FRM A, BNT LVR RIGHT, RED KNOB
 PART NO.: BHW2DBRJ
 REV.:



THE INFORMATION CONTAINED WITHIN THIS DOCUMENT IS PROPRIETARY TO AAA PRODUCTS AND MAY NOT BE DISCLOSED WITHOUT PRIOR WRITTEN CONSENT

D:\Engineering\product\valves\assembly\lever\HW2DBRJ.dwg