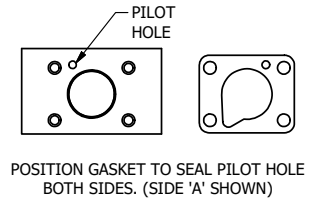
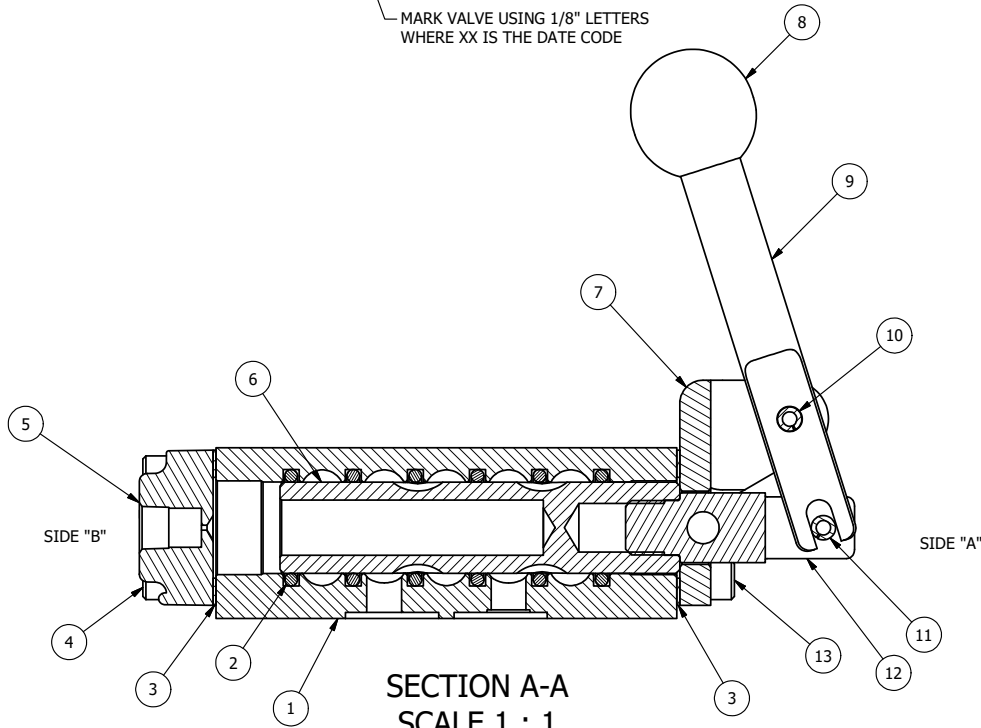


MARK VALVE USING 1/8" LETTERS WHERE XX IS THE DATE CODE



NOTES:

- 1) ALWAYS GIVE VALVE MODEL, AND PART NUMBER WHEN ORDERING PARTS.
- 2) USE MASTER LOCK #7LJKAP176 (ORDERED SEPERATELY, #7LJ KEYPED ALIKE - KAP176).
- 3) FOR MULTIPLE LOCKS, USE LOCKOUT HASP LO23 (ORDERED SEPERATELY).



**SECTION A-A**  
SCALE 1 : 1  
VIEW FROM 3 PORT SIDE

|     |     |          |                                                                                |
|-----|-----|----------|--------------------------------------------------------------------------------|
| 16  | 1   | ZNSPK-2  | KIT - SUBPLATE MOUNTING, BRASS NAMUR, (2 EA V-618-SS SCREW, 2 EA V-565 O-RING) |
| 15  | 1   | V-548    | O-RING, BUNA-N, 70 DURO, 6MM X 1MM, NAMUR PLUG                                 |
| 14  | 1   | V-547    | PLUG, 360 HALF HARD BRASS, NAMUR VALVE                                         |
| 13  | 4   | V-162-SS | SCREW, 10-24 X 5/8, SOCKET HEAD CAP, STAINLESS STEEL                           |
| 12  | 1   | HC3-1LOC | CLEVIS - POS. C LOCKOUT, STAINLESS, 1/4" & 3/8" VALVE                          |
| 11  | 1   | V-48-SS  | PIN, ROLL 3/16 X 9/16 18-8 STAINLESS                                           |
| 10  | 1   | V-508-SS | PIN, ROLL 3/16 X 5/8", 18-8 SS                                                 |
| 9   | 1   | HL3-SS   | HAND LEVER, 303 STAINLESS STEEL, 1/4" & 3/8" VALVE                             |
| 8   | 1   | V-580    | KNOB, BLACK (BRASS 3/8-16 INSERT), 1" DIA BALL                                 |
| 7   | 1   | HE3-5LO  | END CAP, LEVER, 303 STAINLESS, LOCKOUT, 1/4" & 3/8" VALVES                     |
| 6   | 1   | S3       | SPOOL - STANDARD, 2 POS, CLSD CTR, 1/4" & 3/8" VALVE                           |
| 5   | 1   | PEC3-11  | END CAP, PILOT, STAINLESS STEEL, 1/4" & 3/8" VALVE                             |
| 4   | 4   | V-38-SS  | SCREW, 10-24 X 3/4, SOCKET HEAD CAP, 18-8 SS                                   |
| 3   | 2   | ECG3     | GASKET - END CAP, 1/4" & 3/8" VALVE                                            |
| 2   | 6   | V-39     | O-RING, VITON, STD BODY, 1/4" & 3/8" VALVES                                    |
| 1   | 1   | Z2-11    | BODY - BRASS, UPPER PILOTS (BUTTON BLEEDER), 1/4" NAMUR                        |
| FLG | QTY | PART NO  | DESCRIPTION                                                                    |

LIMITS ON DIMENSIONS  
UNLESS  
OTHERWISE SPECIFIED

2-PL DECIMAL ± .01  
3-PL DECIMAL ± .005  
FRACTIONAL ± 1/64  
ANGULAR ± 1/2°



DRAWN: RMckenna

DATE: 9/4/2015

CHECKED: KWaite

DATE: 9/4/2015

SCALE: 1 : 1

SHEET: 1 OF 1

RELEASED: HWomack

DATE: 9/4/2015

TITLE:

1/4" NAMUR, LEVER, 2 POS,  
FRICTION POS, PILOT RTRN,  
BRASS & STAINLESS, LOCKOUT C

PART NO.:

ZNHR2LO

REV.:

THE INFORMATION CONTAINED WITHIN THIS DOCUMENT IS PROPRIETARY TO AAA PRODUCTS AND MAY NOT BE DISCLOSED WITHOUT PRIOR WRITTEN CONSENT