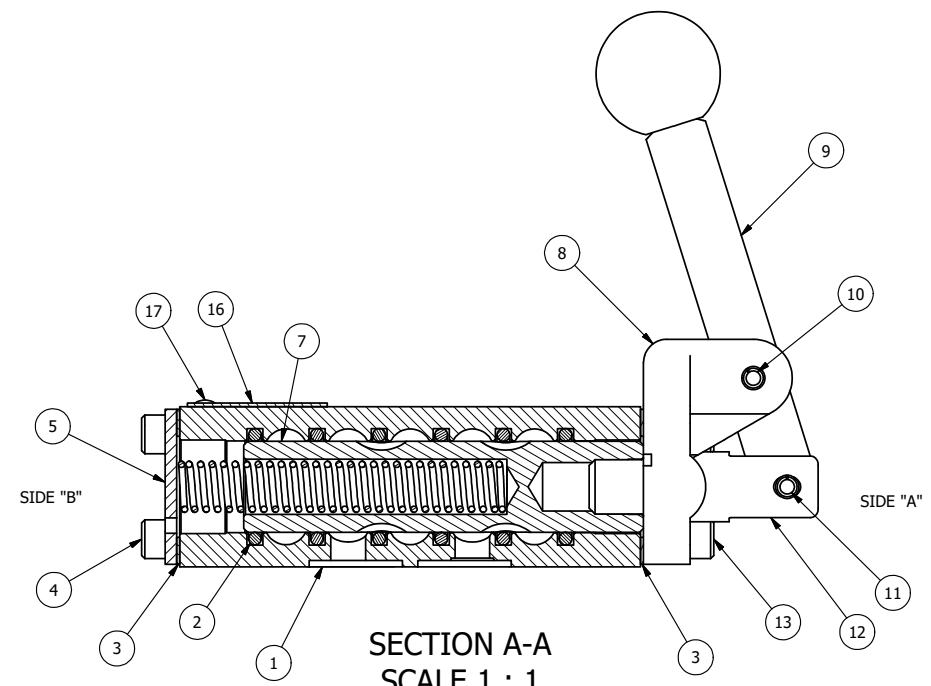


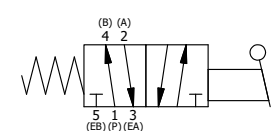
POSITION GASKET TO SEAL PILOT HOLE BOTH SIDES. (SIDE 'A' SHOWN)



NOTES:  
1) ALWAYS GIVE VALVE MODEL, AND PART NUMBER WHEN ORDERING PARTS.

| FLG | QTY | PART NO  | DESCRIPTION   |
|-----|-----|----------|---|
| 18  | 1   | NSPK-2   | SUBPLATE MOUNTING KIT NAMUR (2 EA V-566 SCREW, 2 EA V-565 O-RING) |
| 17  | 2   | V-212    | SCREW, #2 X 3/16 DRIVE, TYPE U, OVAL HEAD, STAINLESS STEEL        |
| 16  | 1   | AN-114   | NAMEPLATE, BLANK, FOR VALVES WITH SPRINGS OR DETENTS              |
| 15  | 1   | V-548    | O-RING, BUNA-N, 70 DURO, 6MM X 1MM, NAMUR PLUG                    |
| 14  | 1   | V-547    | PLUG, 360 HALF HARD BRASS, NAMUR VALVE                            |
| 13  | 4   | V-38     | SCREW, 10-24 X 3/4, SOCKET HEAD CAP                               |
| 12  | 1   | HC3      | CLEVIS - NO DETENTS, 1/4" & 3/8" VALVE                            |
| 11  | 1   | V-48     | PIN, ROLL 3/16 X 9/16, STEEL, ZINC PLATED                         |
| 10  | 1   | V-7      | PIN, ROLL 3/16 X 11/16, STEEL, FOR 1/4 THRU 1/2" HAND, FT & CAM V |
| 9   | 1   | HL3-521  | HAND LEVER WITH RED KNOB, 1/4" & 3/8" VALVE                       |
| 8   | 1   | HE3-1    | END CAP, LEVER, 380 AL, 1/4" & 3/8" VALVE                         |
| 7   | 1   | S3       | SPOOL - STANDARD, 2 POS, CLSD CTR, 1/4" & 3/8" VALVE              |
| 6   | 1   | CS3-2    | SPRING - RETURN, (HO & KO) 1/4" & 3/8" VALVES                     |
| 5   | 1   | SEC3     | END CAP, 304 STAINLESS STEEL, 1/4" & 3/8" VALVE                   |
| 4   | 4   | V-37     | SCREW, 10-24 X 1/2, SOCKET HEAD CAP                               |
| 3   | 2   | ECG3     | GASKET - END CAP, 1/4" & 3/8" VALVE                               |
| 2   | 6   | V-39     | O-RING, VITON, STD BODY, 1/4" & 3/8" VALVES                       |
| 1   | 1   | B2-11E-W | NAMUR INTERFACE, WITH 3/2 CONVERSION, 1/4" VALVE                  |
| FLG | QTY | PART NO  | DESCRIPTION   |

|  |                 |  |                           |  |
|--|-----------------|--|---------------------------|--|
| LIMITS ON DIMENSIONS<br>UNLESS OTHERWISE SPECIFIED                   |                 | 2-PL DECIMAL ± .01<br>3-PL DECIMAL ± .005<br>FRACTIONAL ± 1/64<br>ANGULAR ± 1/2° |                           | <b>AAA PRODUCTS INTERNATIONAL</b><br>7114 Harry Hines Blvd<br>Dallas, TX 75235 |
| DRAWN: RMcKenna  | DATE: 9/16/2015 | CHECKED: KWaite  | DATE: 9/16/2015           |  |
| SCALE: 1 : 1   | SHEET: 1 OF 1   | RELEASED: HWomack  | DATE: 9/16/2015           |  |
| TITLE:<br><b>1/4" NAMUR, LEVER, 2 POS,<br/>SPRING RTRN, RED KNOB</b> |                 |  | PART NO.:<br><b>NHO2J</b> | REV.:  |



THE INFORMATION CONTAINED WITHIN THIS DOCUMENT IS PROPRIETARY TO AAA PRODUCTS AND MAY NOT BE DISCLOSED WITHOUT PRIOR WRITTEN CONSENT

P:\Engineering\Product Valve Assembly\Level HO2J\G\NHO2J.dwg