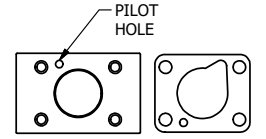
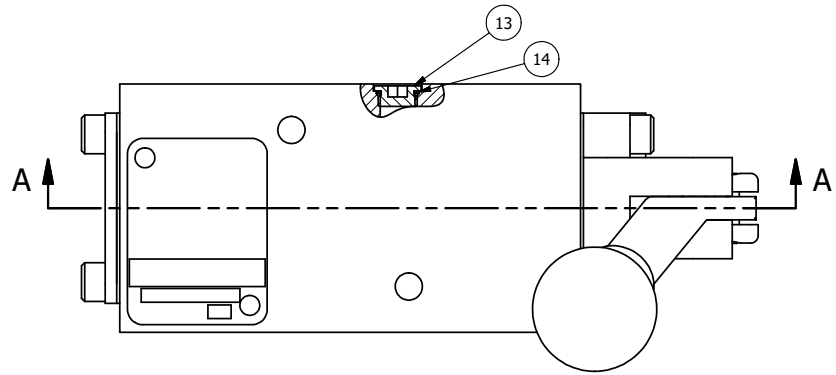


4 | 3 | 2 | 1

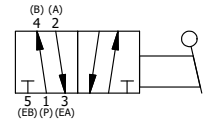
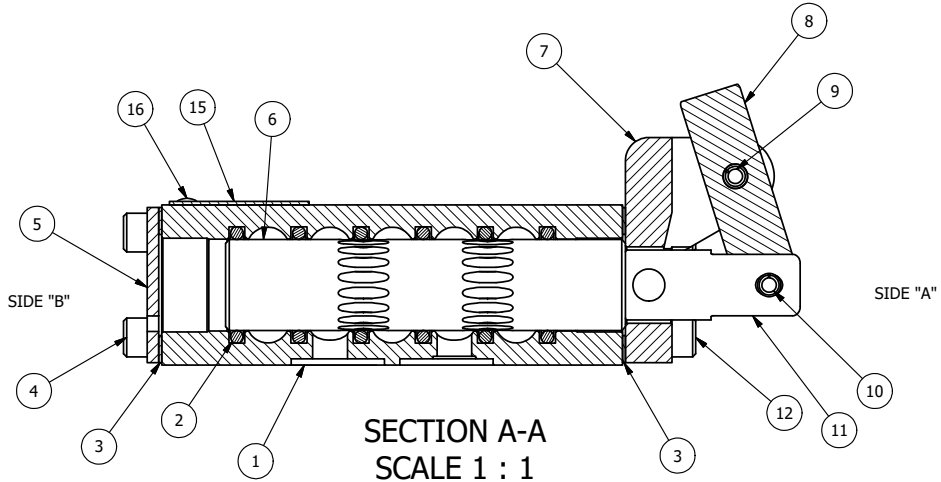


POSITION GASKET TO SEAL PILOT HOLE BOTH SIDES. (SIDE 'A' SHOWN)

NOTES:

1) ALWAYS GIVE VALVE MODEL, AND PART NUMBER WHEN ORDERING PARTS.

|     |     |           |   |
|-----|-----|-----------|---|
| 17  | 1   | NSPK-2    | KIT - SUBPLATE MOUNTING, NAMUR VALVES                             |
| 16  | 2   | V-212     | SCREW, #2 X 3/16 DRIVE, TYPE U, OVAL HEAD, STAINLESS STEEL        |
| 15  | 1   | AN-115    | NAMEPLATE, BLANK, FOR HE,KE,RR,D,CR,PP,SR,SS VALVES               |
| 14  | 1   | V-548     | O-RING, BUNA-N, 70 DURO, 6MM X 1MM, NAMUR PLUG                    |
| 13  | 1   | V-547     | PLUG, 360 HALF HARD BRASS, NAMUR VALVE                            |
| 12  | 4   | V-38      | SCREW, 10-24 X 3/4, SOCKET HEAD CAP                               |
| 11  | 1   | HC3-1LOC  | CLEVIS - POS. C LOCKOUT, 1/4" & 3/8" VALVE                        |
| 10  | 1   | V-48      | PIN, ROLL 3/16 X 9/16, STEEL, ZINC PLATED                         |
| 9   | 1   | V-7       | PIN, ROLL 3/16 X 11/16, STEEL, FOR 1/4 THRU 1/2" HAND, FT & CAM V |
| 8   | 1   | HL3-24B20 | HAND LEVER WITH KNOB, BENT 20 DEG SIDEWAYS, 1/4" & 3/8" VALVES    |
| 7   | 1   | HE3-1LO   | END CAP, LEVER, LOCK OUT, 380 AL, 1/4" & 3/8" VALVE               |
| 6   | 1   | S3        | SPOOL - STANDARD, 2 POS, CLSD CTR, 1/4" & 3/8" VALVE              |
| 5   | 1   | SEC3      | END CAP, 304 STAINLESS STEEL, 1/4" & 3/8" VALVE                   |
| 4   | 4   | V-37      | SCREW, 10-24 X 1/2, SOCKET HEAD CAP                               |
| 3   | 2   | ECG3      | GASKET - END CAP, 1/4" & 3/8" VALVE                               |
| 2   | 6   | V-39      | O-RING, VITON, STD BODY, 1/4" & 3/8" VALVES                       |
| 1   | 1   | B2-11E-W  | NAMUR INTERFACE, WITH 3/2 CONVERSION, 1/4" VALVE                  |
| FLG | QTY | PART NO   | DESCRIPTION   |



|  |                 |  |                 |  |
|--|-----------------|--|-----------------|--|
| LIMITS ON DIMENSIONS<br>UNLESS OTHERWISE SPECIFIED   |                 | 2-PL DECIMAL ± .01<br>3-PL DECIMAL ± .005<br>FRACTIONAL ± 1/64<br>ANGULAR ± 1/2° |                 | <b>AAA PRODUCTS INTERNATIONAL</b><br>7114 Harry Hines Blvd<br>Dallas, TX 75235 |
| DRAWN: RMckenna  | DATE: 5/25/2022 | CHECKED: KWaite  | DATE: 5/25/2022 |  |
| SCALE: 1 : 1   | SHEET: 1 OF 1   | RELEASED: HWomack  | DATE: 5/25/2022 |  |
| TITLE:<br><b>1/4" NAMUR, LEVER, 2 POS,<br/>FRICTION POS, LEVER RTRN,<br/>LVR BENT LFT, LOCKOUT C</b> |                 | PART NO.:<br><b>NHE2BLLO</b>   |                 | REV.:  |

THE INFORMATION CONTAINED WITHIN THIS DOCUMENT IS PROPRIETARY TO AAA PRODUCTS AND MAY NOT BE DISCLOSED WITHOUT PRIOR WRITTEN CONSENT

4 | 3 | 2 | 1

D:\Engineering\Products\Valves\Assembly\Lever\HE\AAA\NHE2BLLO.dwg