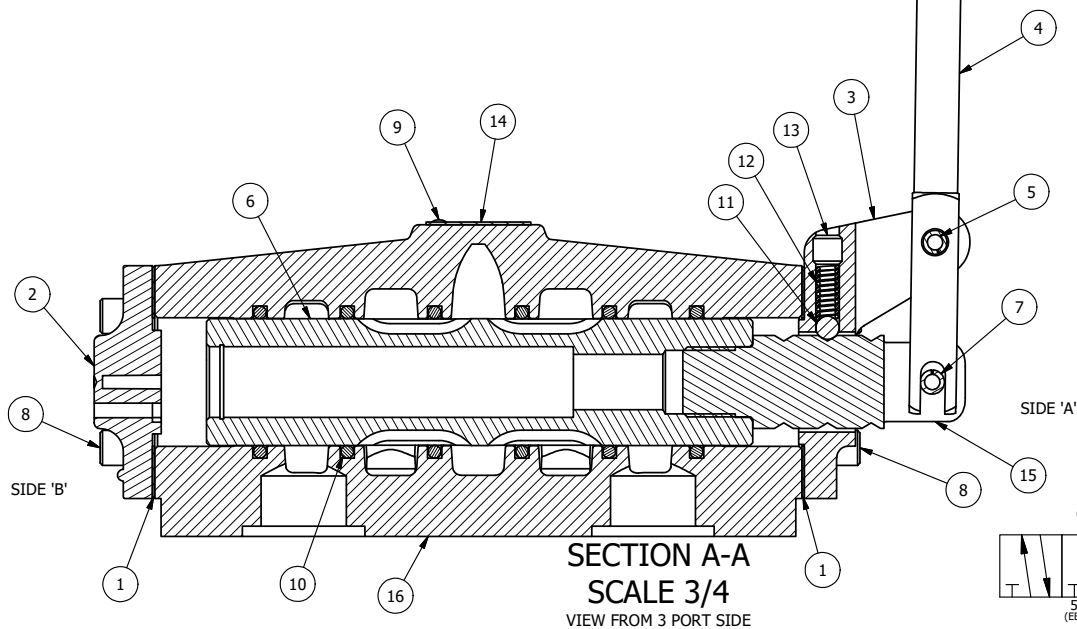


POSITION GASKET ON END OF VALVE SO
GASKET COVERS PILOT HOLE
BOTH SIDES (SIDE 'A' SHOWN)

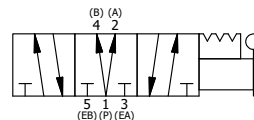
NOTES:

- 1) ALWAYS GIVE VALVE MODEL AND PART NUMBER WHEN ORDERING PARTS.
- 2) LUBRICATE SPRINGS, AND DETENT BALL.

17	1	SPK-8	KIT - SUBPLATE MOUNT, 1" SUBPLATE VALVES
16	1	BP8-1	BODY, 1" SUBPLATE, UPPER PILOTS, ANODIZED
15	1	SC8-3	CLEVIS - 3 POS. DETENT, 3/4" & 1" VALVE
14	1	AN-114	NAME PLATE, BLANK, FOR VALVES WITH SPRINGS OR DETENTS.
13	1	V-8	SCREW, 5/16-18 X 5/16, SOCKET SET, CUP POINT
12	1	DS48	SPRING - DETENT, 1/2", 3/4" & 1" VALVE
11	1	V-4	BALL, CHROME STEEL 1/4 DIA. FOR DETENT
10	6	V-30	O-RING, BUNA-N, 70 DURO, AS-220, (REF 1-3/8 X 1-5/8 X 1/8), 3/4" & 1" VALVES
9	2	V-212	SCREW, #2 X 3/16 DRIVE, TYPE U, OVAL HEAD, STAINLESS STEEL
8	8	V-46	SCREW, 1/4-20 X 3/4, SOCKET HEAD CAP
7	1	V-51-SS	PIN, ROLL 1/4 X 1 FOR 3/4 & 1" HAND FOOT & CAM VALVES, STAINLESS STEEL
6	1	SSH8D	SPOOL - 'D', 3 POS, REGEN CTR, 3/4" & 1" VALVE
5	1	V-70	PIN, ROLL 1/4 X 1 1/8 FOR 3/4 & 1" HAND AND FOOT VALVES
4	1	HL8-9	HAND LEVER ASSEMBLY, 3/4" & 1" VALVE
3	1	FEB-3	END CAP, HAND & FOOT, DETENT, STEEL, NICKEL PLT, 3/4" & 1" VALVES
2	1	PEC48-3	END CAP, VENTED, 380 AL, 1/2", 3/4" & 1" VALVES
1	2	ECG48	GASKET - END CAP, 1/2", 3/4" & 1" VALVE
FLG	QTY	PART NO	DESCRIPTION



SECTION A-A
SCALE 3/4
VIEW FROM 3 PORT SIDE



LIMITS ON DIMENSIONS UNLESS OTHERWISE SPECIFIED		2-PL DECIMAL ± .01 3-PL DECIMAL ± .005 FRACTIONAL ± 1/64 ANGULAR ± 1/2°	<p>AAA PRODUCTS INTERNATIONAL 7114 Harry Hines Blvd Dallas, TX 75235</p>
DRAWN: RMckenna	DATE: 4/30/2015	CHECKED: KWaite	
SCALE: 3/4	SHEET: 1 OF 1	RELEASED: HWomack	DATE: 5/30/2015
TITLE: 1" SUBPLATE, LEVER, 3 POS, DETENT, LEVER SHFT, REGEN CTR SPL		PART NO.: HD8PD	REV.:

THE INFORMATION CONTAINED WITHIN THIS DOCUMENT IS PROPRIETARY TO AAA PRODUCTS AND MAY NOT BE DISCLOSED WITHOUT PRIOR WRITTEN CONSENT