

POSITION GASKET ON END OF VALVE SO MOUNTING HOLES ALIGN BOTH ENDS (SIDE 'A' SHOWN)

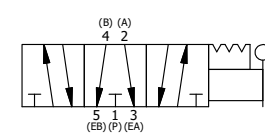
NOTES:  
 1) ALWAYS GIVE VALVE MODEL, AND PART NUMBER WHEN ORDERING PARTS.  
 2) LUBRICATE DETENT BALL, SPRING AND CLEVIS.

|     |     |           |  |
|-----|-----|-----------|--|
| 17  | 2   | V-212     | SCREW, #2 X 3/16 DRIVE, TYPE U, OVAL HEAD, STAINLESS STEEL     |
| 16  | 1   | AN-114    | NAMEPLATE, BLANK, FOR VALVES WITH SPRINGS OR DETENTS           |
| 15  | 1   | V-21      | SCREW, 1/4-20 X 3/16, SOCKET SET, CUP POINT                    |
| 14  | 1   | DS3       | SPRING - DETENT, 1/4" & 3/8" VALVE                             |
| 13  | 1   | V-14      | BALL, CHROME STEEL 3/16 DIA, GRADE 25, FOR DETENT              |
| 12  | 4   | V-162     | SCREW, 10-24 X 5/8, SOCKET HEAD CAP                            |
| 11  | 1   | BHC3-3    | CLEVIS - TRIPLE DETENT, 1/4" & 3/8" STACKING VALVE             |
| 10  | 1   | V-48      | PIN, ROLL 3/16 X 9/16, STEEL, ZINC PLATED                      |
| 9   | 1   | V-542     | PIN, ROLL 3/16 X 1/2 ZINC PLATED STEEL FOR HE3-4 END CAP       |
| 8   | 1   | HL3-24B20 | HAND LEVER WITH KNOB, BENT 20 DEG SIDEWAYS, 1/4" & 3/8" VALVES |
| 7   | 1   | HE3-4D    | ENDCAP - HAND, DETENT, 303 STAINLESS, 1/4" & 3/8" STACK VALVE  |
| 6   | 1   | SSH3G     | SPOOL - 'G', 3 POS, FLOAT CTR, 1/4" & 3/8" VALVE               |
| 5   | 1   | SEC3      | END CAP, 304 STAINLESS STEEL, 1/4" & 3/8" VALVE                |
| 4   | 4   | V-37      | SCREW, 10-24 X 1/2, SOCKET HEAD CAP                            |
| 3   | 2   | ECG3      | GASKET - END CAP, 1/4" & 3/8" VALVE                            |
| 2   | 6   | V-39      | O-RING, VITON, STD BODY, 1/4" & 3/8" VALVES                    |
| 1   | 1   | B3-2E     | BODY - SOLID, PLAIN, NO PILOTS, ANODIZED, 3/8" SIDE PORT VALVE |
| FLG | QTY | PART NO   | DESCRIPTION  |

LIMITS ON DIMENSIONS  
 UNLESS OTHERWISE SPECIFIED  
 2-PL DECIMAL ± .01  
 3-PL DECIMAL ± .005  
 FRACTIONAL ± 1/64  
 ANGULAR ± 1/2°



|   |                  |                      |                  |
|---|------------------|----------------------|------------------|
| DRAWN: RMckenna   | DATE: 12/21/2022 | CHECKED: KWaite      | DATE: 12/21/2022 |
| SCALE: 1 : 1  | SHEET: 1 OF 1    | RELEASED: HWomack    | DATE: 12/21/2022 |
| TITLE:<br>3/8" SIDE PORT, LEVER, 3 POS,<br>DETENT, FLOAT CTR SPL,<br>BNT LVR LFT, 90D LVR |                  | PART NO.:<br>HD3GBLR | REV.:            |



THE INFORMATION CONTAINED WITHIN THIS DOCUMENT IS PROPRIETARY TO AAA PRODUCTS AND MAY NOT BE DISCLOSED WITHOUT PRIOR WRITTEN CONSENT

P:\Engineering\Products\Valves\Assembly\Lever\HD3GBLR.dwg