

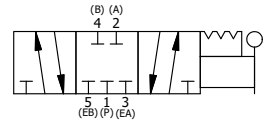
NOTES:
 1) ALWAYS GIVE VALVE MODEL AND PART NUMBER WHEN ORDERING.
 2) OPEN MUFLER 2 TURNS FROM CLOSED POSITION. TIGHTEN LOCK NUT ON MUFLER.
 3) INSTALL MUFLER WITH MAGNALUBE-G GREASE 1 TO 1-1/2 TURNS FROM HAND TIGHT INTO BODY.

THE FOLLOWING PARTS ARE INCLUDED WITH THE SUBPLATE VALVE AND ARE USED TO ASSEMBLE.

| QTY | PART NO | DESCRIPTION |
|-----|---------|------------------------------------------------------------------------|
| 5 | V-92 | O-RING, BUNA-N, 70 DURO, AS-014, (REF 1/2 X 5/8 X 1/16), 3/8" SUBPLATE |
| 4 | V-35 | SCREW, 10-24 X 7/8, SOCKET HEAD CAP |

| | | | |
|-----|-----|---------|---------------------------------------------------------------------------------------|
| 15 | 2 | PCE12E | ENDCAP - PRESSURE CTR, SOLID, 6061-T6 AL, 1-1/2" & 2" VALVES |
| 13 | 1 | HD3PDR | 3/8" SUBPLATE, LEVER, 3 POS, DETENT, REGEN CTR SPL, 90D LEVER |
| 12 | 2 | V-89 | O-RING, BUNA-N, 70 DURO, AS-110, (REF 3/8 X 9/16 X 3/32), 1" & 2" SUBPLATE PILOT |
| 11 | 2 | MFC2 | ASSEMBLY - MUFLER FLOW CONTROL, 1/4" NPT |
| 10 | 3 | V-231 | PLUG, SOCKET PRESSURE 1/16-27X 7/8 TAPER FOR 122V,192V, FOR EC |
| 9 | 2 | V-129 | U-CUP, 1-5/8 X 1-1/8 X 1/4, NITRILE |
| 8 | 2 | V-128 | O-RING, BUNA-N, 70 DURO, AS-229, (REF 2-3/8 X 2-5/8 X 1/8), 3 POS, 1-1/2" & 2" VALVES |
| 7 | 2 | SPC12 | SPOOL - PRESS. CTR, 1 1/2" & 2" VALVE |
| 6 | 2 | V-337 | PLUG, SOCKET 1/4-18 FLUSH SEAL PLUG |
| 5 | 12 | V-143 | SCREW, 5/16-18 X 2, SOCKET HEAD CAP |
| 3 | 1 | S12 | SPOOL - STANDARD, 2 POS - 3 POS CLOSED CTR, 1 1/2" & 2" VALVE |
| 2 | 6 | V-123 | O-RING, BUNA-N, 70 DURO, AS-331, (REF 2-1/4 X 2-5/8 X 3/16), 1-1/2" & 2" VALVES |
| 1 | 1 | B12-6 | BODY, 1 1/2" SIDE PORT, PIGGY BACK |
| FLG | QTY | PART NO | DESCRIPTION |

SECTION A-A
 SCALE 1 / 2
 VIEW FROM 3 PORT SIDE



| | | | | |
|-------------------------------------------------------------------------------------------------------|----------------|----------------------------------------------------------------------------------|---------------------|--------------------------------------------------------------------------------|
| LIMITS ON DIMENSIONS UNLESS OTHERWISE SPECIFIED | | 2-PL DECIMAL ± .01 3-PL DECIMAL ± .005 FRACTIONAL ± 1/64 ANGULAR ± 1/2° | | AAA PRODUCTS INTERNATIONAL 7114 Harry Hines Blvd Dallas, TX 75235 |
| DRAWN: RMckenna | DATE: 2/1/2019 | CHECKED: KWaite | DATE: 2/1/2019 | |
| SCALE: 1 / 2 | SHEET: 1 OF 1 | RELEASED: HWomack | DATE: 2/1/2019 | |
| TITLE: 1-1/2" SIDE PORT, LEVER, 3 POS, DETENT, LEVER SHFT, CLSD CTR SPL, 90D LEVER, EXTERNAL PILOT | | | PART NO.: HD12RZ | REV.: |

THE INFORMATION CONTAINED WITHIN THIS DOCUMENT IS PROPRIETARY TO AAA PRODUCTS AND MAY NOT BE DISCLOSED WITHOUT PRIOR WRITTEN CONSENT