

1/4" NPT EXTERNAL PILOT  
V-92 ORING

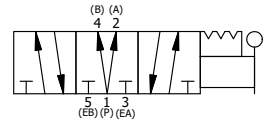
ALIGN END CAP PILOT WITH BODY PILOT HOLE BOTH ENDS

NOTES:  
1) ALWAYS GIVE VALVE MODEL AND PART NUMBER WHEN ORDERING.  
2) OPEN MUFFLER 2 TURNS FROM CLOSED POSITION. TIGHTEN LOCK NUT ON MUFFLER.  
3) INSTALL MUFFLER WITH MAGNALUBE-G GREASE 1 TO 1-1/2 TURNS FROM HAND TIGHT INTO BODY.

THE FOLLOWING PARTS ARE INCLUDED WITH THE SUBPLATE VALVE AND ARE USED TO ASSEMBLE.

QTY	PART NO	DESCRIPTION	
5	V-92	O-RING, BUNA-N, 70 DURO, AS-014, (REF 1/2 X 5/8 X 1/16), 3/8" SUBPLATE	
4	V-35	SCREW, 10-24 X 7/8, SOCKET HEAD CAP	
13	1	HD3PDR1 3/8" SUBPLATE, LEVER, 3 POS, DETENT, REGEN CTR SPL, 270D LEVER	
12	2	V-89 O-RING, BUNA-N, 70 DURO, AS-110, (REF 3/8 X 9/16 X 3/32), 1" & 2" SUBPLATE PILOT	
11	2	MFC2 ASSEMBLY - MUFFLER FLOW CONTROL, 1/4" NPT	
10	3	V-231 PLUG, SOCKET PRESSURE 1/16-27X 7/8 TAPER FOR 122V,192V,FOR EC	
9	2	V-129 U-CUP, 1-5/8 X 1-1/8 X 1/4, NITRILE	
8	2	V-128 O-RING, BUNA-N, 70 DURO, AS-229, (REF 2-3/8 X 2-5/8 X 1/8), 3 POS, 1-1/2" & 2" VALVES	
7	2	SPC12 SPOOL - PRESS. CTR, 1 1/2" & 2" VALVE	
6	2	V-337 PLUG, SOCKET 1/4-18 FLUSH SEAL PLUG	
5	12	V-143 SCREW, 5/16-18 X 2, SOCKET HEAD CAP	
4	2	PCE12E ENDCAP - PRESSURE CTR, SOLID, 6061-T6 AL, 1-1/2" & 2" VALVES	
3	1	S12D SPOOL - 'D', REGEN CTR, 1 1/2" & 2" VALVE	
2	6	V-123 O-RING, BUNA-N, 70 DURO, AS-331, (REF 2-1/4 X 2-5/8 X 3/16), 1-1/2" & 2" VALVES	
1	1	B12-6 BODY, 1 1/2" SIDE PORT, PIGGY BACK	
FLG	QTY	PART NO	DESCRIPTION

SECTION A-A  
SCALE 1 / 2  
VIEW FROM 3 PORT SIDE



LIMITS ON DIMENSIONS  
UNLESS OTHERWISE SPECIFIED  
2-PL DECIMAL ± .01  
3-PL DECIMAL ± .005  
FRACTIONAL ± 1/64  
ANGULAR ± 1/2°

**AAA PRODUCTS INTERNATIONAL**  
7114 Harry Hines Blvd  
Dallas, TX 75235

DRAWN: RMcKenna	DATE: 2/1/2019	CHECKED: KWaite	DATE: 2/1/2019
SCALE: 1 / 2	SHEET: 1 OF 1	RELEASED: HWomack	DATE: 2/1/2019
TITLE: 1-1/2" SIDE PORT, LEVER, 3 POS, DETENT, LEVER SHFT, REGEN CTR SPL, 270D LEVER, EXTERNAL PILOT		PART NO.: HD12DRTZ	REV.:

THE INFORMATION CONTAINED WITHIN THIS DOCUMENT IS PROPRIETARY TO AAA PRODUCTS AND MAY NOT BE DISCLOSED WITHOUT PRIOR WRITTEN CONSENT

D:\Engineering\product\Valve Assembly\Lever\HD12DRTZ.dwg