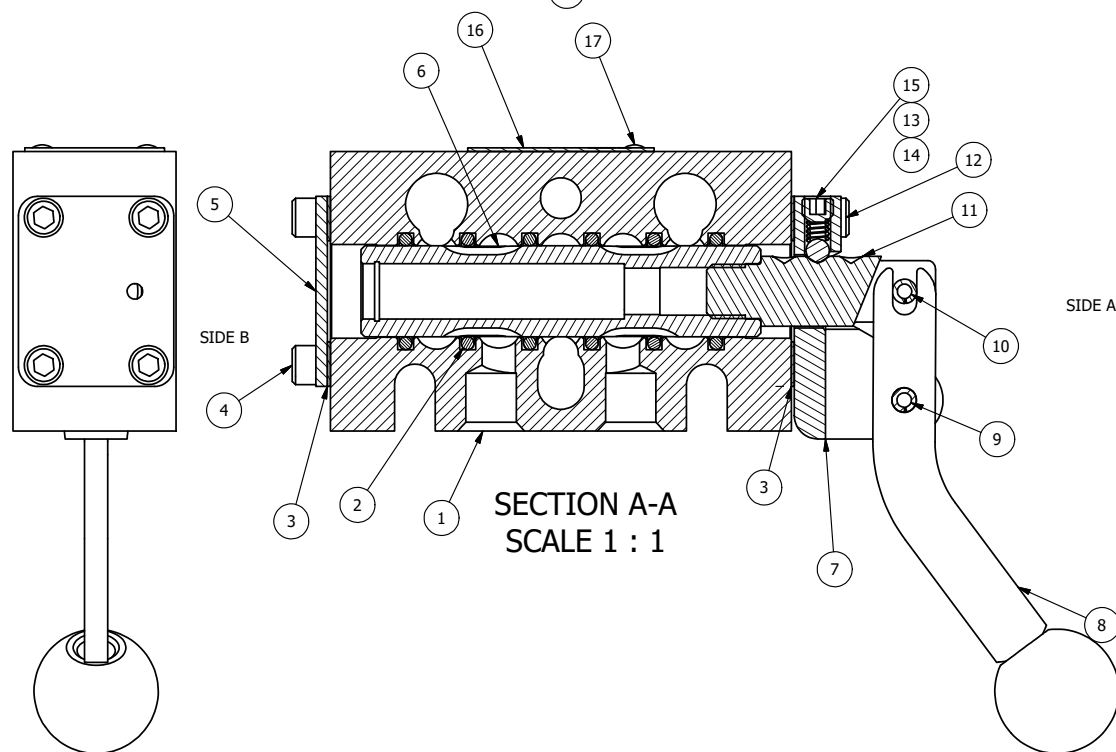


POSITION GASKET ON END OF VALVE  
TO SEAL PILOT HOLE IF PRESENT,  
BOTH SIDES (SIDE 'B' SHOWN)

NOTES:

- 1) ALWAYS GIVE VALVE MODEL AND PART NUMBER WHEN ORDERING PARTS.
- 2) LUBRICATE DETENT BALL, SPRING AND CLEVIS.




SIDE A

SIDE B

SECTION A-A  
SCALE 1 : 1

|     |     |          |   |
|-----|-----|----------|---|
| 18  | 3   | V-110    | O-RING, BUNA-N, 70 DURO, AS-114, (REF 5/8 X 13/16 X 3/32), 1/4" SLEEVE, 1/2" SUB, STACK |
| 17  | 2   | V-212    | SCREW, #2 X 3/16 DRIVE, TYPE U, OVAL HEAD, STAINLESS STEEL                              |
| 16  | 1   | AN-114   | NAMEPLATE, BLANK, FOR VALVES WITH SPRINGS OR DETENTS                                    |
| 15  | 1   | V-21     | SCREW, 1/4-20 X 3/16, SOCKET SET, CUP POINT   |
| 14  | 1   | DS3      | SPRING - DETENT, 1/4" & 3/8" VALVE  |
| 13  | 1   | V-14     | BALL, CHROME STEEL 3/16 DIA, GRADE 25, FOR DETENT                                       |
| 12  | 4   | V-162    | SCREW, 10-24 X 5/8, SOCKET HEAD CAP   |
| 11  | 1   | BHC3-3   | CLEVIS - TRIPLE DETENT, 1/4" & 3/8" STACKING VALVE                                      |
| 10  | 1   | V-48     | PIN, ROLL 3/16 X 9/16, STEEL, ZINC PLATED   |
| 9   | 1   | V-542    | PIN, ROLL 3/16 X 1/2 ZINC PLATED STEEL FOR HE3-4 END CAP                                |
| 8   | 1   | HL3-521C | CURVED HAND LEVER WITH RED KNOB, 1/4" & 3/8" VALVE                                      |
| 7   | 1   | HE3-4D   | ENDCAP - HAND, DETENT, 303 STAINLESS, 1/4" & 3/8" STACK VALVE                           |
| 6   | 1   | SSH3G    | SPOOL - 'G', 3 POS, FLOAT CTR, 1/4" & 3/8" VALVE  |
| 5   | 1   | SEC3     | END CAP, 304 STAINLESS STEEL, 1/4" & 3/8" VALVE   |
| 4   | 4   | V-37     | SCREW, 10-24 X 1/2, SOCKET HEAD CAP   |
| 3   | 2   | ECG3     | GASKET - END CAP, 1/4" & 3/8" VALVE   |
| 2   | 6   | V-39     | O-RING, VITON, STD BODY, 1/4" & 3/8" VALVES   |
| 1   | 1   | B2-10E   | FINISHED - SOLID BODY, UPPER PILOTS, 1/4" STACKING VALVE                                |
| FLG | QTY | PART NO  | DESCRIPTION   |

|   |  |  |  |  |  |
|---|--|--|--|--|--|
| LIMITS ON DIMENSIONS<br>UNLESS<br>OTHERWISE SPECIFIED   |  | 2-PL DECIMAL ± .01<br>3-PL DECIMAL ± .005<br>FRACTIONAL ± 1/64<br>ANGULAR ± 1/2° |  |  <b>AAA PRODUCTS<br/>INTERNATIONAL</b><br>7114 Harry Hines Blvd<br>Dallas, TX 75235 |  |
| DRAWN: RMckenna   |  | DATE: 12/28/2022   |  | CHECKED: KWaite  |  |
| SCALE: 1 : 1  |  | SHEET: 1 OF 1  |  | RELEASED: HWomack  |  |
| TITLE:<br>1/4" STACK, LEVER, 3 POS,<br>DETENT, FLOAT CTR SPOOL,<br>CRVD LVR, RED KNOB, 180D LVR |  |  |  | PART NO.:<br>BHD2GCJT  |  |
|   |  |  |  | REV.:  |  |

THE INFORMATION CONTAINED WITHIN THIS DOCUMENT IS PROPRIETARY TO AAA PRODUCTS AND MAY NOT BE DISCLOSED WITHOUT PRIOR WRITTEN CONSENT

P:\Engineering\Product Valves Assembly\BHD2GCJT.dwg