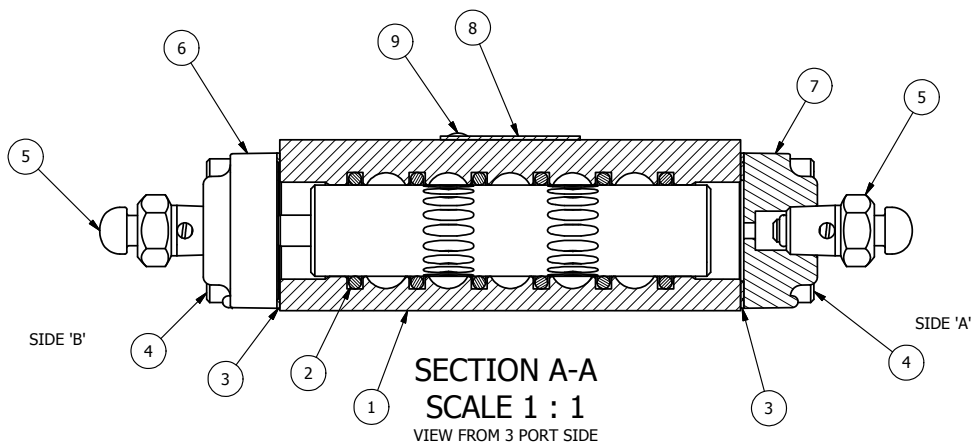


ALIGN PILOT HOLE AND GASKET HOLE BOTH SIDES (SIDE 'A' SHOWN)

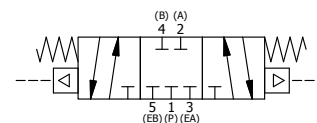
NOTES:
1) ALWAYS GIVE VALVE MODEL AND PART NUMBER WHEN ORDERING PARTS.



FLG	QTY	PART NO	DESCRIPTION
9	2	V-212	SCREW, #2 X 3/16 DRIVE, TYPE U, OVAL HEAD, 316 STAINLESS STEEL
8	1	AN-114	NAME PLATE, BLANK, FOR VALVES WITH SPRINGS OR DETENTS.
7	1	DP3	ENDCAP - DP3, 380 AL, 1/4" & 3/8" VALVE
6	1	AY-DY3	SPRING CENTER SPOOL ASSY, DIFFERENTIAL PILOT - 1/4 & 3/8
5	2	BB-1S	COMPLETE BUTTON BLEEDER ASSY W/STEEL PLUNGER
4	8	V-38	SCREW, 10-24 X 3/4 SHCS, FOR 3/8" CAST END CAP
3	2	BG3	GASKET - END CAP, 1/4" & 3/8" VALVE
2	6	V-39	O-RING, STD BODY, VITON, 1/4" & 3/8" VALVES
1	1	B3-1E	BODY - SOLID, BUTTON BLEEDER, ANODIZED, 3/8" SIDE PORT VALVE

LIMITS ON DIMENSIONS UNLESS OTHERWISE SPECIFIED		2-PL DECIMAL ± .01 3-PL DECIMAL ± .005 FRACTIONAL ± 1/64 ANGULAR ± 1/2°		AAA PRODUCTS INTERNATIONAL 7114 Harry Hines Blvd Dallas, TX 75235
DRAWN: RMckenna	DATE: 8/12/2005	CHECKED: KWaite	DATE: 3/27/2015	
SCALE: 1 : 1	SHEET: 1 OF 1	RELEASED: HWomack	DATE: 3/27/2015	
TITLE: 3/8" SIDE PORT, DIFF PILOT, 3 POS, SPR CTR, DIFF PLT SHFT, CLSD CTR SPL		PART NO.: DY3	REV.: D	

NO.	DATE	REVISION
D	10/18/2014	CHANGED GASKET BACK TO BG3
C	3/17/06	CHANGED GASKET FROM BG3 TO ECG3
B	7/20/05	CHANGED GASKET FROM NEG3 TO BG3
A	4/20/99	REDRAWN AND CONV TO CAD



THE INFORMATION CONTAINED WITHIN THIS DOCUMENT IS PROPRIETARY TO AAA PRODUCTS AND MAY NOT BE DISCLOSED WITHOUT PRIOR WRITTEN CONSENT

P:\Engineering\Inventory Files\Internal Drawings\Valves Assembly\DiffPilot\DPY3.dwg