

- NOTES:  
 1) ALWAYS GIVE VALVE MODEL AND PART NUMBER WHEN ORDERING.  
 2) OPEN MUFFLER 2 TURNS FROM CLOSED POSITION. TIGHTEN LOCK NUT ON MUFFLER.  
 3) INSTALL MUFFLER WITH MAGNALUBE-G GREASE 1 TO 1-1/2 TURNS FROM HAND TIGHT INTO BODY.

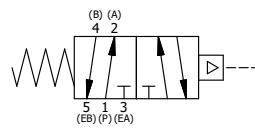
THE FOLLOWING PARTS ARE INCLUDED WITH THE SUBPLATE VALVE AND ARE USED TO ASSEMBLE.

| QTY | PART NO | DESCRIPTION  |
|-----|---------|--|
| 5   | V-92    | O-RING, BUNA-N, 70 DURO, AS-014, (REF 1/2 X 5/8 X 1/16), 3/8" SUBPLATE |
| 4   | V-35    | SCREW, 10-24 X 7/8, SOCKET HEAD CAP                                    |

|     |     |         |   |
|-----|-----|---------|---|
| 11  | 1   | DO3P    | 3/8" SUBPLATE, DIFF PILOT, 2 POS, SPRING RTRN   |
| 10  | 2   | MFC2    | ASSEMBLY - MUFFLER FLOW CONTROL, 1/4" NPT   |
| 9   | 3   | V-337   | PLUG, SOCKET 1/4-18 FLUSH SEAL PLUG   |
| 8   | 2   | V-124   | O-RING, BUNA-N, 70 DURO, AS-231, (REF 2-5/8 X 2-7/8 X 1/8), 2 POS, 1-1/2" & 2" VALVES |
| 7   | 2   | V-89    | O-RING, BUNA-N, 70 DURO, AS-110, (REF 3/8 X 9/16 X 3/32), 1" & 2" SUBPLATE PILOT      |
| 6   | 2   | V-231   | PLUG, SOCKET PRESSURE 1/16-27X 7/8 TAPER FOR 122V,192V,FOR EC                         |
| 5   | 12  | V-143   | SCREW, 5/16-18 X 2, SOCKET HEAD CAP   |
| 4   | 2   | PEC12E  | ENDCAP - PILOT, SOLID, 6061-T6 AL, 1-1/2" & 2" VALVES                                 |
| 3   | 1   | S12     | SPOOL - STANDARD, 2 POS - 3 POS CLOSED CTR, 1 1/2" & 2" VALVE                         |
| 2   | 6   | V-123   | O-RING, BUNA-N, 70 DURO, AS-331, (REF 2-1/4 X 2-5/8 X 3/16), 1-1/2" & 2" VALVES       |
| 1   | 1   | B12-6   | BODY, 1 1/2" SIDE PORT, PIGGY BACK  |
| FLG | QTY | PART NO | DESCRIPTION   |

SECTION A-A  
 SCALE 1/2  
 VIEW FROM 3 PORT SIDE

|  |                |  |                 |  |
|--|----------------|--|-----------------|--|
| LIMITS ON DIMENSIONS<br>UNLESS OTHERWISE SPECIFIED         |                | 2-PL DECIMAL ± .01<br>3-PL DECIMAL ± .005<br>FRACTIONAL ± 1/64<br>ANGULAR ± 1/2° |                 | <b>AAA PRODUCTS INTERNATIONAL</b><br>7114 Harry Hines Blvd<br>Dallas, TX 75235 |
| DRAWN: RMckenna  | DATE: 8/9/2011 | CHECKED: KWaite  | DATE: 3/27/2015 |  |
| SCALE: 1/2   | SHEET: 1 OF 1  | RELEASED: HWomack  | DATE: 3/27/2015 | PART NO.: DO12   |
| TITLE:<br>1-1/2" SIDE PORT, DIFF PILOT, 2 POS, SPRING RTRN |                |  |                 | REV.:  |



THE INFORMATION CONTAINED WITHIN THIS DOCUMENT IS PROPRIETARY TO AAA PRODUCTS AND MAY NOT BE DISCLOSED WITHOUT PRIOR WRITTEN CONSENT

D:\Engineering\Product Valve Assembly\Different\DO12\DO12.dwg