

NOTES:  
 1) ALWAYS GIVE VALVE MODEL AND PART NUMBER WHEN ORDERING PARTS.

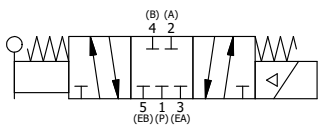
14	1	SPK-8	KIT - SUBPLATE MOUNT, 1" SUBPLATE VALVES
13	2	V-212	SCREW, #2 X 3/16 DRIVE, TYPE U, OVAL HEAD, STAINLESS STEEL
12	1	AN-114	NAMEPLATE, BLANK, FOR VALVES WITH SPRINGS OR DETENTS
11	4	V-47	SCREW, 1/4-20 X 1, SOCKET HEAD CAP
10	1	V-19	PLUG, 1/8-27 NPT, 7/8 TAPER, FLUSH SEAL, SOCKET PIPE PLUG W/LOCTITE RED VIBRA-SEAL
9	1	AY-38X-11	CLASSIC SOLENOID - EXPLOSION PROOF, 120/60VAC, 38.5VDC, 110/50VAC
8	1	AY-SYH8-LSO	ASSY - SPR CTR, CLSD CTR SPL, SOL, LESS OPER, LVR ASSIST, 3/4" & 1" VALVE
7	1	HL8-9	HAND LEVER ASSEMBLY, 3/4" & 1" VALVE
6	1	V-70	PIN, ROLL 1/4 X 1 1/8 FOR 3/4 & 1" HAND AND FOOT VALVES
5	4	V-46	SCREW, 1/4-20 X 3/4, SOCKET HEAD CAP
4	1	FE8	END CAP, HAND & FOOT, STAINLESS STEEL, 3/4" & 1" VALVES
3	2	ECG48	GASKET - END CAP, 1/2", 3/4" & 1" VALVE
2	6	V-30	O-RING, BUNA-N, 70 DURO, AS-220, (REF 1-3/8 X 1-5/8 X 1/8), 3/4" & 1" VALVES
1	1	BP8-1	BODY, 1" SUBPLATE, UPPER PILOTS, ANODIZED
FLG	QTY	PART NO	DESCRIPTION

LIMITS ON DIMENSIONS  
 UNLESS OTHERWISE SPECIFIED  
 2-PL DECIMAL ± .01  
 3-PL DECIMAL ± .005  
 FRACTIONAL ± 1/64  
 ANGULAR ± 1/2°



DRAWN: RMckenna	DATE: 6/8/2024	CHECKED: KWaite	DATE: 6/8/2024
SCALE: None	SHEET: 1 OF 1	RELEASED: HWomack	DATE: 6/8/2024
TITLE: 1" SUBPLATE, SNGL SOL, 3 POS, CLSD SPR CTR, LEVER SHIFT, EXPL PROOF, 120/60		PART NO.: SYH8PX	REV.:

OPERATOR VOLTAGES	
PART NO	REPLACE OPERATOR
SYH8PX 12VDC	AY-38X-5
SYH8PX 24VDC	AY-38X-8
SYH8PX 240/60	AY-38X-17



SECTION A-A  
 SCALE 3/4

THE INFORMATION CONTAINED WITHIN THIS DOCUMENT IS PROPRIETARY TO AAA PRODUCTS AND MAY NOT BE DISCLOSED WITHOUT PRIOR WRITTEN CONSENT

P:\Engineering\product\valves\assembly\class354\DWG\SYH8PX.dwg