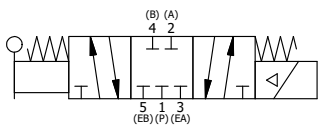


NOTES:
 1) ALWAYS GIVE VALVE MODEL AND PART NUMBER WHEN ORDERING PARTS.
 2) FOR DIFFERENT VOLTAGES OTHER THAN 120/60, REPLACE SOLENOID OPERATOR WITH OPERATOR LISTED IN TABLE BELOW. REFERENCE AY-38ED DRAWING FOR REPLACEMENT COILS.

14	1	SPK-8	KIT - SUBPLATE MOUNT, 1" SUBPLATE VALVES
13	2	V-212	SCREW, #2 X 3/16 DRIVE, TYPE U, OVAL HEAD, STAINLESS STEEL
12	1	AN-114	NAMEPLATE, BLANK, FOR VALVES WITH SPRINGS OR DETENTS
11	4	V-47	SCREW, 1/4-20 X 1, SOCKET HEAD CAP
10	1	V-19	PLUG, 1/8-27 NPT, 7/8 TAPER, FLUSH SEAL, SOCKET PIPE PLUG W/LOCTITE RED VIBRA-SEAL
9	1	AY-38ED-11	CLASSIC SOLENOID - ISO 4400 DIN, 120/60
8	1	AY-SYH8-LSO	ASSY - SPR CTR, CLSD CTR SPL, SOL, LESS OPER, LVR ASSIST, 3/4" & 1" VALVE
7	1	HL8-9	HAND LEVER ASSEMBLY, 3/4" & 1" VALVE
6	1	V-70	PIN, ROLL 1/4 X 1 1/8 FOR 3/4 & 1" HAND AND FOOT VALVES
5	4	V-46	SCREW, 1/4-20 X 3/4, SOCKET HEAD CAP
4	1	FE8	END CAP, HAND & FOOT, STAINLESS STEEL, 3/4" & 1" VALVES
3	2	ECG48	GASKET - END CAP, 1/2", 3/4" & 1" VALVE
2	6	V-30	O-RING, BUNA-N, 70 DURO, AS-220, (REF 1-3/8 X 1-5/8 X 1/8), 3/4" & 1" VALVES
1	1	BP8-1	BODY, 1" SUBPLATE, UPPER PILOTS, ANODIZED
FLG	QTY	PART NO	DESCRIPTION

LIMITS ON DIMENSIONS UNLESS OTHERWISE SPECIFIED		2-PL DECIMAL ± .01 3-PL DECIMAL ± .005 FRACTIONAL ± 1/64 ANGULAR ± 1/2°	AAA PRODUCTS INTERNATIONAL 7114 Harry Hines Blvd Dallas, TX 75235	
DRAWN: RMckenna		DATE: 6/8/2024		CHECKED: KWaite
SCALE: None		SHEET: 1 OF 1	RELEASED: HWomack	DATE: 6/8/2024
TITLE: 1" SUBPLATE, SNGL SOL, 3 POS, CLSD SPR CTR, LEVER SHIFT, ISO 4400 DIN, 120/60			PART NO.:	REV.:
			SYH8PED	

OPERATOR VOLTAGES	
PART NO	REPLACE OPERATOR
SYH8PED 12VDC	AY-38ED-5
SYH8PED 24VDC	AY-38ED-8
SYH8PED 240/60	AY-38ED-17



SECTION A-A
SCALE 3/4

THE INFORMATION CONTAINED WITHIN THIS DOCUMENT IS PROPRIETARY TO AAA PRODUCTS AND MAY NOT BE DISCLOSED WITHOUT PRIOR WRITTEN CONSENT