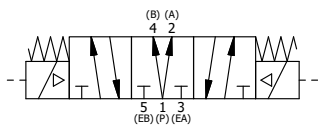


POSITION GASKET TO SEAL PILOT HOLE, BOTH SIDES.
 THE ROUND ALUMINUM ADAPTOR IS ROTATED 90 DEGREES.
 SUPPLY 50-160 PSI TO 1/8" NPTF PILOT PORT IN ADAPTOR.

NOTES:
 1) ALWAYS GIVE VALVE MODEL AND PART NUMBER WHEN ORDERING PARTS.
 2) FOR DIFFERENT VOLTAGES OTHER THAN 120/60, REPLACE SOLENOID OPERATOR WITH OPERATOR LISTED IN TABLE BELOW. REFERENCE AY-38ED DRAWING FOR REPLACEMENT COILS.

13	2	V-212	SCREW, #2 X 3/16 DRIVE, TYPE U, OVAL HEAD, STAINLESS STEEL
12	1	AN-114	NAMEPLATE, BLANK, FOR VALVES WITH SPRINGS OR DETENTS
11	1	SSA48-O	ADAPTOR, 'A' SIDE, CLASSIC SOL., OVERRIDE, 1/2", 3/4" & 1" VALVE
10	8	V-47	SCREW, 1/4-20 X 1, SOCKET HEAD CAP
9	2	V-81	SCREW, 8-32 X 5/16, SOCKET SET, FULL DOG POINT
8	2	AY-38ED-11	CLASSIC SOLENOID - ISO 4400 DIN, 120/60
7	4	V-85	O-RING, BUNA-N, 70 DURO, AS-010, (REF 1/4 X 3/8 X 1/16), CLASSIC OVRD
6	2	OS3	SPRING - MANUAL OVERRIDE, "CLASSIC" SOLENOID
5	2	OP4	PIN , MANUAL OVERRIDE, 1/2", 3/4" & 1" VALVES
4	1	AY-SY8DO-LSO	ASSY - SPR CTR, REGEN CTR SPL, CLSC SOL, LESS OPER, LCKG OVRD, 3/4" & 1" VALVE
3	2	ECG48	GASKET - END CAP, 1/2", 3/4" & 1" VALVE
2	6	V-30	O-RING, BUNA-N, 70 DURO, AS-220, (REF 1-3/8 X 1-5/8 X 1/8), 3/4" & 1" VALVES
1	1	B6-1	BODY, 3/4" SIDE PORT, UPPER PILOTS, ANODIZED
FLG	QTY	PART NO	DESCRIPTION

LIMITS ON DIMENSIONS UNLESS OTHERWISE SPECIFIED		2-PL DECIMAL ± .01 3-PL DECIMAL ± .005 FRACTIONAL ± 1/64 ANGULAR ± 1/2°	AAA PRODUCTS INTERNATIONAL 7114 Harry Hines Blvd Dallas, TX 75235										
DRAWN: RMckenna	DATE: 12/18/2016	CHECKED: KWaite		DATE: 12/18/2016									
SCALE: 3/4	SHEET: 1 OF 1	RELEASED: HWomack	DATE: 12/18/2016										
TITLE: 3/4" SIDE PORT, DBL SOL, 2 POS, SPR CTR, REGEN CTR SPL, ISO 4400, 120/60, LCKNG OVRD, EXT PILOT		PART NO.:	REV.:										
<table border="1"> <thead> <tr> <th colspan="2">OPERATOR VOLTAGES</th> </tr> <tr> <th>PART NO</th> <th>REPLACE OPERATOR</th> </tr> </thead> <tbody> <tr> <td>SY6DEDOZ 240/60</td> <td>AY-38ED-17</td> </tr> <tr> <td>SY6DEDOZ 24VDC</td> <td>AY-38ED-8</td> </tr> <tr> <td>SY6DEDOZ 12VDC</td> <td>AY-38ED-5</td> </tr> </tbody> </table>		OPERATOR VOLTAGES		PART NO	REPLACE OPERATOR	SY6DEDOZ 240/60	AY-38ED-17	SY6DEDOZ 24VDC	AY-38ED-8	SY6DEDOZ 12VDC	AY-38ED-5	SY6DEDOZ	
OPERATOR VOLTAGES													
PART NO	REPLACE OPERATOR												
SY6DEDOZ 240/60	AY-38ED-17												
SY6DEDOZ 24VDC	AY-38ED-8												
SY6DEDOZ 12VDC	AY-38ED-5												



THE INFORMATION CONTAINED WITHIN THIS DOCUMENT IS PROPRIETARY TO AAA PRODUCTS AND MAY NOT BE DISCLOSED WITHOUT PRIOR WRITTEN CONSENT