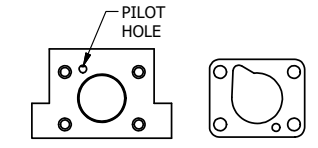


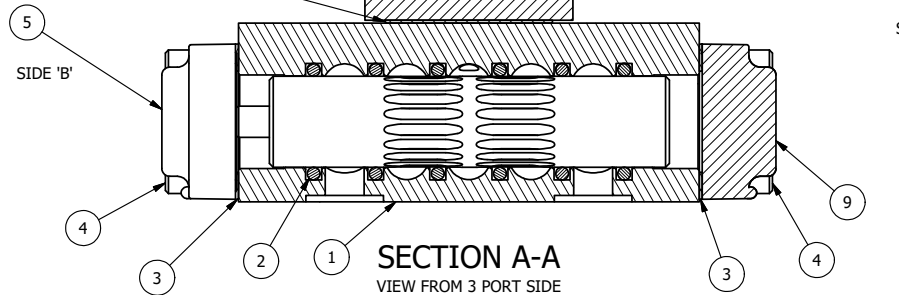
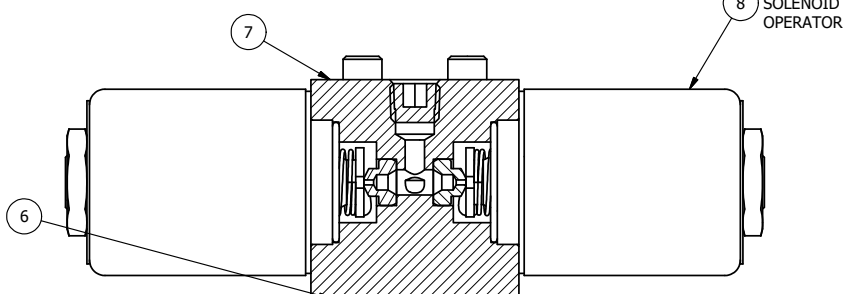
ALIGN HOLES IN GASKET AS SHOWN.  
 (FOR EXTERNAL PILOT PRESSURE, REMOVE PIGGY BACK BLOCK AND ROTATE 180°. LEAVE GASKET AS SHOWN. REMOVE 1/8" PLUG AND CONNECT SUPPLY PRESSURE - 160 PSI MAX.)



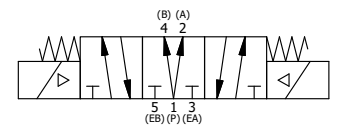
ALIGN PILOT HOLE AND CENTER CUTOUT ON BOTH SIDES.

NOTES:

- 1) ALWAYS GIVE VALVE MODEL AND PART NUMBER WHEN ORDERING PARTS.
- 2) FOR DIFFERENT VOLTAGES OTHER THAN 120/60, REPLACE SOLENOID OPERATOR WITH OPERATOR LISTED IN TABLE BELOW. REFERENCE AY-38T DRAWING FOR REPLACEMENT COILS.



SECTION A-A  
 VIEW FROM 3 PORT SIDE



| OPERATOR VOLTAGES |                  |
|-------------------|------------------|
| PART NO           | REPLACE OPERATOR |
| SY3PDT 240/60     | AY-38T-17        |
| SY3PDT 24VDC      | AY-38T-8         |
| SY3PDT 12VDC      | AY-38T-5         |

| FLG | QTY | PART NO   | DESCRIPTION   |
|-----|-----|-----------|---|
| 14  | 1   | SPK-3     | KIT - SUBPLATE MOUNTING, 3/8" SUBPLATE VALVES                     |
| 13  | 2   | V-212     | SCREW, #2 X 3/16 DRIVE, TYPE U, OVAL HEAD, STAINLESS STEEL        |
| 12  | 1   | AN-114    | NAMEPLATE, BLANK, FOR VALVES WITH SPRINGS OR DETENTS              |
| 11  | 1   | V-19      | PLUG, SOCKET PIPE 1/8" NPT (#601-3 PITTSBURG PLUG PART #.)        |
| 10  | 4   | V-1       | SCREW, 10-24 X 2, SOCKET HEAD CAP                                 |
| 9   | 1   | SEC3-1    | END CAP, NON-VENTED, 380 AL, 1/4" & 3/8" VALVES                   |
| 8   | 2   | AY-38T-11 | CLASSIC SOLENOID - STANDARD, COMPLETE OPER, TAPPED EXH., 120/60   |
| 7   | 1   | PB3-2E    | ADAPTOR - DOUBLE SOLENOID, 1/4" & 3/8" VALVES                     |
| 6   | 1   | PBG3      | GASKET - PIGGY BACK, DOUBLE SOLENOID, 1/4" & 3/8" VALVE           |
| 5   | 1   | AY-EY3D   | ASSY - SPR CTR, REGEN CTR SPL, CLASSIC SOLENOID, 1/4 & 3/8 VALVES |
| 4   | 8   | V-38      | SCREW, 10-24 X 3/4, SOCKET HEAD CAP                               |
| 3   | 2   | ECG3      | GASKET - END CAP, 1/4" & 3/8" VALVE                               |
| 2   | 6   | V-39      | O-RING, VITON, STD BODY, 1/4" & 3/8" VALVES                       |
| 1   | 1   | BP3-6E    | BODY - SOLID, PIGGY BACK, ANODIZED, 3/8" SUBPLATE VALVE           |

LIMITS ON DIMENSIONS  
 UNLESS OTHERWISE SPECIFIED  
 2-PL DECIMAL ± .01  
 3-PL DECIMAL ± .005  
 FRACTIONAL ± 1/64  
 ANGULAR ± 1/2°

**AAA PRODUCTS INTERNATIONAL**  
 7114 Harry Hines Blvd  
 Dallas, TX 75235

|   |                 |                     |                 |
|---|-----------------|---------------------|-----------------|
| DRAWN: RMckenna   | DATE: 8/14/2015 | CHECKED: KWaite     | DATE: 8/14/2015 |
| SCALE: 1 : 1  | SHEET: 1 OF 1   | RELEASED: HWomack   | DATE: 8/14/2015 |
| TITLE:<br>3/8" SUBPLATE, DBL SOL, 3 POS,<br>SPR CTR, REGEN CTR SPL, CLASSIC,<br>120/60, TAPPED VENT |                 | PART NO.:<br>SY3PDT | REV.:           |

THE INFORMATION CONTAINED WITHIN THIS DOCUMENT IS PROPRIETARY TO AAA PRODUCTS AND MAY NOT BE DISCLOSED WITHOUT PRIOR WRITTEN CONSENT