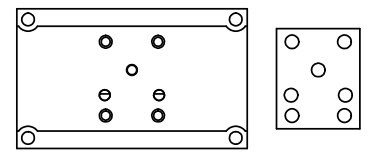


ALIGN PILOT HOLE AND CENTER CUTOUT ON BOTH SIDES.



ALIGN HOLES IN GASKET AS SHOWN.  
(FOR EXTERNAL PILOT PRESSURE, REMOVE PIGGY BACK BLOCK AND ROTATE 180°. LEAVE GASKET AS SHOWN. REMOVE 1/8" PLUG AND CONNECT SUPPLY PRESSURE - 160 PSI MAX.)

NOTES:  
1) ALWAYS GIVE VALVE MODEL AND PART NUMBER WHEN ORDERING PARTS.  
2) FOR DIFFERENT VOLTAGES OTHER THAN 120/60, REPLACE SOLENOID OPERATOR WITH OPERATOR LISTED IN TABLE BELOW. REFERENCE AY-38M DRAWING FOR REPLACEMENT COILS.

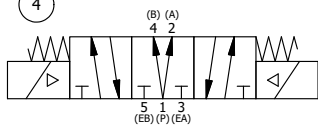
| FLG | QTY | PART NO    | DESCRIPTION  |
|-----|-----|------------|--|
| 5   | 2   | V-81       | SCREW, 8-32 X 5/16, SOCKET SET, FULL DOG POINT                                     |
| 18  | 1   | SPK-3      | KIT - SUBPLATE MOUNTING, 3/8" SUBPLATE VALVES                                      |
| 17  | 2   | V-212      | SCREW, #2 X 3/16 DRIVE, TYPE U, OVAL HEAD, STAINLESS STEEL                         |
| 16  | 1   | AN-114     | NAMEPLATE, BLANK, FOR VALVES WITH SPRINGS OR DETENTS                               |
| 14  | 4   | V-1        | SCREW, 10-24 X 2, SOCKET HEAD CAP  |
| 13  | 1   | SEC3-1     | END CAP, NON-VENTED, 380 AL, 1/4" & 3/8" VALVES                                    |
| 12  | 2   | AY-38MT-11 | CLASSIC SOLENOID - 1/2" NPT CONDUIT, 120/60, TAPPED EXH                            |
| 11  | 2   | V-85       | O-RING, BUNA-N, 70 DURO, AS-010, (REF 1/4 X 3/8 X 1/16), CLASSIC OVRD              |
| 10  | 2   | OS3        | SPRING - MANUAL OVERRIDE, "CLASSIC" SOLENOID                                       |
| 9   | 2   | POP-3      | OVERRIDE, PUSH PIN, 303 STAINLESS, 1/4" & 3/8" VALVE                               |
| 8   | 1   | V-19       | PLUG, 1/8-27 NPT, 7/8 TAPER, FLUSH SEAL, SOCKET PIPE PLUG W/LOCTITE RED VIBRA-SEAL |
| 7   | 1   | PB3-4E     | ADAPTOR - DBL SOL., W/OVERRIDE, 1/4" & 3/8" VALVES                                 |
| 6   | 1   | PBG3       | GASKET - PIGGY BACK, DOUBLE SOLENOID, 1/4" & 3/8" VALVE                            |
| 5   | 1   | AY-EY3D    | ASSY - SPR CTR, REGEN CTR SPL, CLASSIC SOLENOID, 1/4 & 3/8 VALVES                  |
| 4   | 8   | V-38       | SCREW, 10-24 X 3/4, SOCKET HEAD CAP  |
| 3   | 2   | ECG3       | GASKET - END CAP, 1/4" & 3/8" VALVE  |
| 2   | 6   | V-39       | O-RING, VITON, STD BODY, 1/4" & 3/8" VALVES  |
| 1   | 1   | BP3-6E     | BODY - SOLID, PIGGY BACK, ANODIZED, 3/8" SUBPLATE VALVE                            |

LIMITS ON DIMENSIONS  
UNLESS OTHERWISE SPECIFIED  
2-PL DECIMAL ± .01  
3-PL DECIMAL ± .005  
FRACTIONAL ± 1/64  
ANGULAR ± 1/2°



|  |                 |                   |                 |
|--|-----------------|-------------------|-----------------|
| DRAWN: RMckenna  | DATE: 2/22/2025 | CHECKED: KWaite   | DATE: 2/22/2025 |
| SCALE: 1:1   | SHEET: 1 OF 1   | RELEASED: HWomack | DATE: 2/22/2025 |
| TITLE:<br><b>3/8" SUBPLATE, DBL SOL, 3 POS,<br/>SPR REGEN CTR, MOLD-OVER, 120/60,<br/>PUSH OVRD, TAPPED VENT</b> |                 | PART NO.:         | REV.:           |
|  |                 | <b>SY3PDMOPT</b>  |                 |

| OPERATOR VOLTAGES |                  |
|-------------------|------------------|
| PART NO           | REPLACE OPERATOR |
| SY3PDMOPT 12VDC   | AY-38MT-5        |
| SY3PDMOPT 24VDC   | AY-38MT-8        |
| SY3PDMOPT 240/60  | AY-38MT-17       |



THE INFORMATION CONTAINED WITHIN THIS DOCUMENT IS PROPRIETARY TO AAA PRODUCTS AND MAY NOT BE DISCLOSED WITHOUT PRIOR WRITTEN CONSENT

P:\Engineering\product\valves\assembly\classics\SY3PDMOPT1.dwg