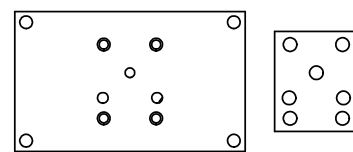


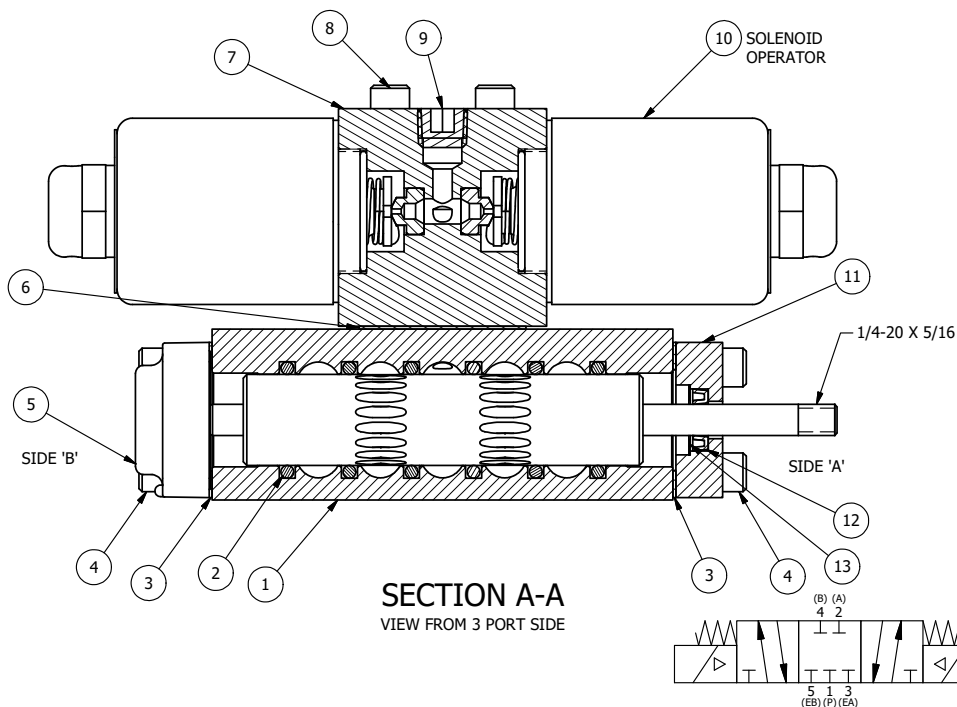
ALIGN PILOT HOLE AND CENTER CUTOUT ON BOTH SIDES.



ALIGN HOLES IN GASKET AS SHOWN.  
(FOR EXTERNAL PILOT PRESSURE, REMOVE PIGGY BACK BLOCK AND ROTATE 180°. LEAVE GASKET AS SHOWN. REMOVE 1/8" PLUG AND CONNECT SUPPLY PRESSURE - 160 PSI MAX.)


#### NOTES:

- 1) ALWAYS GIVE VALVE MODEL AND PART NUMBER WHEN ORDERING PARTS.
- 2) FOR DIFFERENT VOLTAGES OTHER THAN 120/60, REPLACE SOLENOID OPERATOR WITH OPERATOR LISTED IN TABLE BELOW. REFERENCE AY-38 DRAWING FOR REPLACEMENT COILS.



SECTION A-A  
VIEW FROM 3 PORT SIDE

|     |     |           |  |
|-----|-----|-----------|--|
| 15  | 2   | V-212     | SCREW, #2 X 3/16 DRIVE, TYPE U, OVAL HEAD, STAINLESS STEEL                         |
| 14  | 1   | AN-114    | NAMEPLATE, BLANK, FOR VALVES WITH SPRINGS OR DETENTS                               |
| 13  | 1   | V-119     | RING, CIRCULAR PUSH ON TYPE FOR INDICATOR PIN                                      |
| 12  | 1   | V-78      | U-CUP, 1/2 X 1/4 X 1/8, NITRILE  |
| 11  | 1   | PEC3-5    | END CAP, INDICATOR PIN, WIPER CAVITY, 6061-T6, 1/4" & 3/8" VALVE                   |
| 10  | 2   | AY-38L-11 | CLASSIC SOLENOID, 120/60, W/DUST EXCLUDER  |
| 9   | 1   | V-19      | PLUG, 1/8-27 NPT, 7/8 TAPER, FLUSH SEAL, SOCKET PIPE PLUG W/LOCTITE RED VIBRA-SEAL |
| 8   | 4   | V-1       | SCREW, 10-24 X 2, SOCKET HEAD CAP  |
| 7   | 1   | PB3-2E    | ADAPTOR - DOUBLE SOLENOID, 1/4" & 3/8" VALVES                                      |
| 6   | 1   | PBG3      | GASKET - PIGGY BACK, DOUBLE SOLENOID, 1/4" & 3/8" VALVE                            |
| 5   | 1   | AY-EY30S  | ASSY - SPR CTR, CLSD CTR SPL, MAN SPL OVRD, 1/4 & 3/8 VALVES                       |
| 4   | 8   | V-38      | SCREW, 10-24 X 3/4, SOCKET HEAD CAP  |
| 3   | 2   | ECG3      | GASKET - END CAP, 1/4" & 3/8" VALVE  |
| 2   | 6   | V-39      | O-RING, VITON, STD BODY, 1/4" & 3/8" VALVES  |
| 1   | 1   | B3-6E     | BODY - SOLID, PIGGY BACK, ANODIZED, 3/8" SIDE PORT VALVE                           |
| FLG | QTY | PART NO   | DESCRIPTION  |

|  |  |   |  |  |  |
|--|--|---|--|--|--|
| LIMITS ON DIMENSIONS<br>UNLESS<br>OTHERWISE SPECIFIED  |  | 2-PL DECIMAL ± .01<br>3-PL DECIMAL ± .005<br>FRACTIONAL ± 1/64<br>ANGULAR ± 1/2 |  |  <b>AAA PRODUCTS INTERNATIONAL</b><br>7114 Harry Hines Blvd<br>Dallas, TX 75235 |  |
| DRAWN: RMckenna  |  | DATE: 2/19/2025   |  | CHECKED: KWaitte   |  |
| SCALE: 1 : 1   |  | SHEET: 1 OF 1   |  | RELEASED: HWomack  |  |
| TITLE:<br>3/8" SIDE PORT, DBL SOL, 3 POS,<br>SPR CLSD CTR, CLASSIC, 120/60,<br>DUST EXCLDR, THD INDCTR PIN |  |   |  | PART NO.:<br><br>SY3LK   |  |
|  |  |   |  | REV.:  |  |

THE INFORMATION CONTAINED WITHIN THIS DOCUMENT IS PROPRIETARY TO AAA PRODUCTS AND MAY NOT BE DISCLOSED WITHOUT PRIOR WRITTEN CONSENT