

12 SEE NOTES 2 & 3

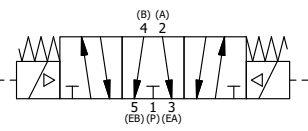
- NOTES:  
 1) ALWAYS GIVE VALVE MODEL AND PART NUMBER WHEN ORDERING.  
 2) OPEN MUFFLER 2 TURNS FROM CLOSED POSITION. TIGHTEN LOCK NUT ON MUFFLER.  
 3) INSTALL MUFFLER WITH MAGNALUBE-G GREASE 1 TO 1-1/2 TURNS FROM HAND TIGHT INTO BODY.  
 4) FOR DIFFERENT VOLTAGES OTHER THAN 120/60, REPLACE TOP CONTROL VALVE WITH VALVE LISTED IN TABLE BELOW.

ALIGN END CAP PILOT WITH BODY PILOT HOLE BOTH ENDS

THE FOLLOWING PARTS ARE INCLUDED WITH THE SUBPLATE VALVE AND ARE USED TO ASSEMBLE.

| QTY | PART NO | DESCRIPTION   |
|-----|---------|---|
| 5   | V-92    | O-RING, BUNA-N, 70 DURO, AS-014, (REF 1/2 X 5/8 X 1/16), 3/8" SUBPLATE                      |
| 4   | V-35    | SCREW, 10-24 X 7/8, SOCKET HEAD CAP   |
| 14  | 1       | SPK-16 KIT - SUBPLATE MOUNT, 2" SUBPLATE VALVES   |
| 13  | 1       | SY3PDX 3/8" SUBPLATE, DBL SOL, 3 POS, SPR CTR, SOL SHFT, REGEN CTR SPL, EXPL PROOF, 120/60  |
| 12  | 2       | MFC2 ASSEMBLY - MUFFLER FLOW CONTROL, 1/4" NPT  |
| 11  | 2       | V-337 PLUG, SOCKET 1/4-18 FLUSH SEAL PLUG   |
| 10  | 2       | V-129 U-CUP, 1-5/8 X 1-1/8 X 1/4, NITRILE   |
| 9   | 2       | SPC12 SPOOL - PRESS. CTR, 1 1/2" & 2" VALVE   |
| 8   | 2       | V-128 O-RING, BUNA-N, 70 DURO, AS-229, (REF 2-3/8 X 2-5/8 X 1/8), 3 POS, 1-1/2" & 2" VALVES |
| 7   | 3       | V-231 PLUG, SOCKET PRESSURE 1/16-27X 7/8 TAPER FOR 122V, 192V, FOR EC                       |
| 6   | 2       | V-89 O-RING, BUNA-N, 70 DURO, AS-110, (REF 3/8 X 9/16 X 3/32), 1" & 2" SUBPLATE PILOT       |
| 5   | 2       | PCE12E ENDCAP - PRESSURE CTR, SOLID, 6061-T6 AL, 1-1/2" & 2" VALVES                         |
| 4   | 12      | V-143 SCREW, 5/16-18 X 2, SOCKET HEAD CAP   |
| 3   | 1       | S12G SPOOL - 'G', FLOAT CTR, 1 1/2" & 2" VALVE  |
| 2   | 6       | V-123 O-RING, BUNA-N, 70 DURO, AS-331, (REF 2-1/4 X 2-5/8 X 3/16), 1-1/2" & 2" VALVES       |
| 1   | 1       | BP16-6 BODY, 2" SUBPLATE, PIGGY BACK  |
| FLG | QTY     | PART NO DESCRIPTION   |

SECTION A-A  
VIEW FROM 3 PORT SIDE



| CONTROL VALVE VOLTAGES |               |
|------------------------|---------------|
| PART NO                | REPLACE WITH  |
| SY16PGXZ 240/60        | SY3PDX 240/60 |
| SY16PGXZ 24VDC         | SY3PDX 24VDC  |
| SY16PGXZ 12VDC         | SY3PDX 12VDC  |

LIMITS ON DIMENSIONS UNLESS OTHERWISE SPECIFIED  
 2-PL DECIMAL ± .01  
 3-PL DECIMAL ± .005  
 FRACTIONAL ± 1/64  
 ANGULAR ± 1/2°

**AAA PRODUCTS INTERNATIONAL**  
 PRODUCTS INTERNATIONAL  
 7114 Harry Hines Blvd  
 Dallas, TX 75235

DRAWN: RMcKenna DATE: 3/17/2016 CHECKED: KWaite DATE: 3/17/2016  
 SCALE: 1/2 SHEET: 1 OF 1 RELEASED: HWomack DATE: 3/17/2016

|   |                              |       |
|---|------------------------------|-------|
| TITLE:<br><b>2" SUBPLATE, DBL SOL, 3 POS, PRESS CTR, SOL SHFT, FLOAT CTR SPL, EXPL PROOF, 120/60, EXT PILOT</b> | PART NO.:<br><b>SY16PGXZ</b> | REV.: |
|---|------------------------------|-------|

THE INFORMATION CONTAINED WITHIN THIS DOCUMENT IS PROPRIETARY TO AAA PRODUCTS AND MAY NOT BE DISCLOSED WITHOUT PRIOR WRITTEN CONSENT

D:\Engineering\Products\Valves\Assembly\classics\SY16PGXZ\SY16PGXZ.dwg