

12 SEE NOTES 2 & 3

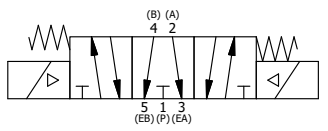
- NOTES:
 1) ALWAYS GIVE VALVE MODEL AND PART NUMBER WHEN ORDERING.
 2) OPEN MUFFLER 2 TURNS FROM CLOSED POSITION. TIGHTEN LOCK NUT ON MUFFLER.
 3) INSTALL MUFFLER WITH MAGNALUBE-G GREASE 1 TO 1-1/2 TURNS FROM HAND TIGHT INTO BODY.
 4) FOR DIFFERENT VOLTAGES OTHER THAN 120/60, REPLACE TOP CONTROL VALVE WITH VALVE LISTED IN TABLE BELOW.

ALIGN END CAP PILOT WITH BODY PILOT HOLE BOTH ENDS

THE FOLLOWING PARTS ARE INCLUDED WITH THE SUBPLATE VALVE AND ARE USED TO ASSEMBLE.

| QTY | PART NO | DESCRIPTION | |
|-----|---------|--|-------------|
| 5 | V-92 | O-RING, BUNA-N, 70 DURO, AS-014, (REF 1/2 X 5/8 X 1/16), 3/8" SUBPLATE | |
| 4 | V-35 | SCREW, 10-24 X 7/8, SOCKET HEAD CAP | |
| 13 | 1 | SY3PDONL 3/8" SUBPLATE, DBL SOL, 3 POS, REGEN SPR CTR, CLASSIC, 120/60, NON-LCKNG OVRD, EXCLDR | |
| 12 | 2 | MFC2 ASSEMBLY - MUFFLER FLOW CONTROL, 1/4" NPT | |
| 11 | 3 | V-337 PLUG, SOCKET 1/4-18 FLUSH SEAL PLUG | |
| 10 | 2 | V-129 U-CUP, 1-5/8 X 1-1/8 X 1/4, NITRILE | |
| 9 | 2 | SPC12 SPOOL - PRESS. CTR, 1 1/2" & 2" VALVE | |
| 8 | 2 | V-128 O-RING, BUNA-N, 70 DURO, AS-229, (REF 2-3/8 X 2-5/8 X 1/8), 3 POS, 1-1/2" & 2" VALVES | |
| 7 | 2 | V-231 PLUG, SOCKET PRESSURE 1/16-27X 7/8 TAPER FOR 122V, 192V, FOR EC | |
| 6 | 2 | V-89 O-RING, BUNA-N, 70 DURO, AS-110, (REF 3/8 X 9/16 X 3/32), 1" & 2" SUBPLATE PILOT | |
| 5 | 2 | PCE12E ENDCAP - PRESSURE CTR, SOLID, 6061-T6 AL, 1-1/2" & 2" VALVES | |
| 4 | 12 | V-143 SCREW, 5/16-18 X 2, SOCKET HEAD CAP | |
| 3 | 1 | S12G SPOOL - 'G', FLOAT CTR, 1 1/2" & 2" VALVE | |
| 2 | 6 | V-123 O-RING, BUNA-N, 70 DURO, AS-331, (REF 2-1/4 X 2-5/8 X 3/16), 1-1/2" & 2" VALVES | |
| 1 | 1 | B12-6 BODY, 1 1/2" SIDE PORT, PIGGY BACK | |
| FLG | QTY | PART NO | DESCRIPTION |

SECTION A-A
VIEW FROM 3 PORT SIDE



| OPERATOR VOLTAGES | |
|-------------------|-----------------|
| PART NO | REPLACE WITH |
| SY12GONL 12VDC | SY3PDONL 12VDC |
| SY12GONL 24VDC | SY3PDONL 24VDC |
| SY12GONL 240/60 | SY3PDONL 240/60 |

LIMITS ON DIMENSIONS
 UNLESS OTHERWISE SPECIFIED
 2-PL DECIMAL ± .01
 3-PL DECIMAL ± .005
 FRACTIONAL ± 1/64
 ANGULAR ± 1/2°

DRAWN: RMckenna DATE: 4/6/2021
 SCALE: 1/2 SHEET: 1 OF 1

AAA PRODUCTS INTERNATIONAL
 PRODUCTS INTERNATIONAL
 7114 Harry Hines Blvd
 Dallas, TX 75235

CHECKED: KWaite DATE: 4/6/2021
 RELEASED: HWomack DATE: 4/6/2021

TITLE:
 1-1/2" SIDE PORT, DBL SOL, 3 POS,
 FLOAT SPR CTR, CLASSIC SOL, 120/60,
 NON-LCKNG OVRD, EXCLDR

PART NO.: SY12GONL

REV.:

THE INFORMATION CONTAINED WITHIN THIS DOCUMENT IS PROPRIETARY TO AAA PRODUCTS AND MAY NOT BE DISCLOSED WITHOUT PRIOR WRITTEN CONSENT