

NOTES:
 1) ALWAYS GIVE VALVE MODEL AND PART NUMBER WHEN ORDERING.
 2) OPEN MUFFLER 2 TURNS FROM CLOSED POSITION. TIGHTEN LOCK NUT ON MUFFLER.
 3) INSTALL MUFFLER WITH MAGNALUBE-G GREASE 1 TO 1-1/2 TURNS FROM HAND TIGHT INTO BODY.
 4) FOR DIFFERENT VOLTAGES OTHER THAN 120/60, REPLACE TOP CONTROL VALVE WITH VALVE LISTED IN TABLE BELOW.

THE FOLLOWING PARTS ARE INCLUDED WITH THE SUBPLATE VALVE AND ARE USED TO ASSEMBLE.

| QTY | PART NO | DESCRIPTION | |
|-----|---------|--|-------------|
| 5 | V-92 | O-RING, BUNA-N, 70 DURO, AS-014, (REF 1/2 X 5/8 X 1/16), 3/8" SUBPLATE | |
| 4 | V-35 | SCREW, 10-24 X 7/8, SOCKET HEAD CAP | |
| 13 | 1 | SY3PDEDONL 3/8" SUBPLATE, DBL SOL, 3 POS, REGEN SPR CTR, ISO4400 DIN, 120/60, NON-LCK OVRD, EXCLDR | |
| 12 | 2 | MFC2 ASSEMBLY - MUFFLER FLOW CONTROL, 1/4" NPT | |
| 11 | 3 | V-337 PLUG, SOCKET 1/4-18 FLUSH SEAL PLUG | |
| 10 | 2 | V-129 U-CUP, 1-5/8 X 1-1/8 X 1/4, NITRILE | |
| 9 | 2 | SPC12 SPOOL - PRESS. CTR, 1 1/2" & 2" VALVE | |
| 8 | 2 | V-128 O-RING, BUNA-N, 70 DURO, AS-229, (REF 2-3/8 X 2-5/8 X 1/8), 3 POS, 1-1/2" & 2" VALVES | |
| 7 | 2 | V-231 PLUG, SOCKET PRESSURE 1/16-27X 7/8 TAPER FOR 122V,192V, FOR EC | |
| 6 | 2 | V-89 O-RING, BUNA-N, 70 DURO, AS-110, (REF 3/8 X 9/16 X 3/32), 1" & 2" SUBPLATE PILOT | |
| 5 | 2 | PCE12E ENDCAP - PRESSURE CTR, SOLID, 6061-T6 AL, 1-1/2" & 2" VALVES | |
| 4 | 12 | V-143 SCREW, 5/16-18 X 2, SOCKET HEAD CAP | |
| 3 | 1 | S12D SPOOL - 'D', REGEN CTR, 1 1/2" & 2" VALVE | |
| 2 | 6 | V-123 O-RING, BUNA-N, 70 DURO, AS-331, (REF 2-1/4 X 2-5/8 X 3/16), 1-1/2" & 2" VALVES | |
| 1 | 1 | B12-6 BODY, 1 1/2" SIDE PORT, PIGGY BACK | |
| FLG | QTY | PART NO | DESCRIPTION |

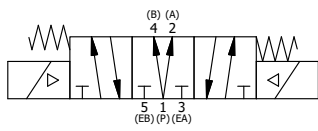
LIMITS ON DIMENSIONS
 UNLESS OTHERWISE SPECIFIED
 2-PL DECIMAL ± .01
 3-PL DECIMAL ± .005
 FRACTIONAL ± 1/64
 ANGULAR ± 1/2°

AAA PRODUCTS INTERNATIONAL
 PRODUCTS INTERNATIONAL
 7114 Harry Hines Blvd
 Dallas, TX 75235

| | | | |
|--|----------------|-------------------|----------------|
| DRAWN: RMckenna | DATE: 4/6/2021 | CHECKED: KWaite | DATE: 4/6/2021 |
| SCALE: 1/2 | SHEET: 1 OF 1 | RELEASED: HWomack | DATE: 4/6/2021 |
| TITLE: 1-1/2" SIDE PORT, DBL SOL, 3 POS, REGEN SPR CTR, ISO4400 DIN, 120/60, NON-LCKNG OVRD, EXCLDR | | PART NO.: | REV.: |
| | | SY12DEDONL | |

OPERATOR VOLTAGES

| PART NO | REPLACE WITH |
|-------------------|-------------------|
| SY12DEDONL 12VDC | SY3PDEDONL 12VDC |
| SY12DEDONL 24VDC | SY3PDEDONL 24VDC |
| SY12DEDONL 240/60 | SY3PDEDONL 240/60 |



SECTION A-A
 VIEW FROM 3 PORT SIDE

THE INFORMATION CONTAINED WITHIN THIS DOCUMENT IS PROPRIETARY TO AAA PRODUCTS AND MAY NOT BE DISCLOSED WITHOUT PRIOR WRITTEN CONSENT