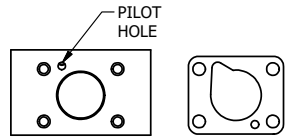
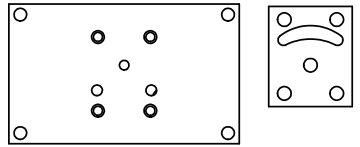


POSITION GASKET TO SEAL PILOT HOLE ON SIDE 'B' AS SHOWN.



ALIGN PILOT HOLE AND CENTER CUTOUT ON SIDE 'A' AS SHOWN.



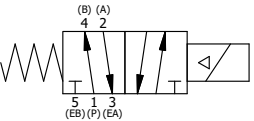
ALIGN HOLES IN GASKET AS SHOWN.  
(FOR EXTERNAL PILOT PRESSURE, REMOVE PIGGY BACK BLOCK AND ROTATE 180°. LEAVE GASKET AS SHOWN. REMOVE 1/8" PLUG AND CONNECT SUPPLY PRESSURE - 160 PSI MAX.)

NOTES:  
1) ALWAYS GIVE VALVE MODEL AND PART NUMBER WHEN ORDERING PARTS.  
2) FOR DIFFERENT VOLTAGES OTHER THAN 120/60, REPLACE SOLENOID OPERATOR WITH OPERATOR LISTED IN TABLE BELOW. REFERENCE AY-38EDL DRAWING FOR REPLACEMENT COILS.

|     |     |             |   |
|-----|-----|-------------|---|
| 19  | 2   | V-212       | SCREW, #2 X 3/16 DRIVE, TYPE U, OVAL HEAD, STAINLESS STEEL            |
| 18  | 1   | AN-114      | NAMEPLATE, BLANK, FOR VALVES WITH SPRINGS OR DETENTS                  |
| 17  | 1   | V-81        | SCREW, 8-32 X 5/16, SOCKET SET, FULL DOG POINT                        |
| 16  | 1   | V-19        | PLUG, SOCKET PIPE 1/8" NPT (#601-3 PITTSBURG PLUG PART #.)            |
| 15  | 1   | SEC3-1      | END CAP, NON-VENTED, 380 AL, 1/4" & 3/8" VALVES                       |
| 14  | 1   | AY-38EDL-11 | CLASSIC SOLENOID - ISO 4400 DIN, DUST EXCLUDER NUT, 120/60            |
| 13  | 1   | V-85        | O-RING, BUNA-N, 70 DURO, AS-010, (REF 1/4 X 3/8 X 1/16), CLASSIC OVRD |
| 12  | 1   | OS3         | SPRING - MANUAL OVERRIDE, "CLASSIC" SOLENOID                          |
| 11  | 1   | OP3         | PIN - MANUAL OVERRIDE, 1/4" & 3/8" VALVES                             |
| 10  | 4   | V-1         | SCREW, 10-24 X 2, SOCKET HEAD CAP                                     |
| 9   | 1   | PB3-3E      | ADAPTOR - SNGL SOL., W/OVERRIDE, 1/4" & 3/8" VALVES                   |
| 8   | 1   | PBG3-1      | GASKET - PIGGY BACK, SINGLE SOLENOID, 1/4" & 3/8" VALVE               |
| 7   | 1   | S3          | SPOOL - STANDARD, 2 POS, CLSD CTR, 1/4" & 3/8" VALVE                  |
| 6   | 1   | CS3         | SPRING - RETURN, (EXCEPT HO, KO & PO) 1/4" & 3/8" VALVES              |
| 5   | 1   | SEC3-A      | END CAP, VENTED, SPRING BOSS, 380 AL, 1/4" & 3/8" VALVE               |
| 4   | 8   | V-38        | SCREW, 10-24 X 3/4, SOCKET HEAD CAP                                   |
| 3   | 2   | ECG3        | GASKET - END CAP, 1/4" & 3/8" VALVE                                   |
| 2   | 6   | V-39        | O-RING, VITON, STD BODY, 1/4" & 3/8" VALVES                           |
| 1   | 1   | B3-6E       | BODY - SOLID, PIGGY BACK, ANODIZED, 3/8" SIDE PORT VALVE              |
| FLG | QTY | PART NO     | DESCRIPTION   |

|  |  |  |  |  |                 |
|--|--|--|--|--|-----------------|
| LIMITS ON DIMENSIONS<br>UNLESS OTHERWISE SPECIFIED   |  | 2-PL DECIMAL ± .01<br>3-PL DECIMAL ± .005<br>FRACTIONAL ± 1/64<br>ANGULAR ± 1/2° |  | <b>AAA PRODUCTS INTERNATIONAL</b><br>7114 Harry Hines Blvd<br>Dallas, TX 75235 |                 |
| DRAWN: RMckenna  |  | DATE: 6/3/2015   |  |  | CHECKED: KWaite |
| SCALE: 1 : 1   |  | SHEET: 1 OF 1  |  | RELEASED: HWomack  | DATE: 4/4/2016  |
| TITLE:<br><b>3/8" SIDE PORT, SNGL SOL, 2 POS, SPRING RTRN, ISO 4400 DIN, 120/60, LCKNG OVRD, DUST EXCLDR</b> |  |  |  | PART NO.:  | REV.:           |
|  |  |  |  | SO3EDOL  |                 |

| OPERATOR VOLTAGES |                  |
|-------------------|------------------|
| PART NO           | REPLACE OPERATOR |
| SO3EDOL 240/60    | AY-38EDL-17      |
| SO3EDOL 24VDC     | AY-38EDL-8       |
| SO3EDOL 12VDC     | AY-38EDL-5       |



THE INFORMATION CONTAINED WITHIN THIS DOCUMENT IS PROPRIETARY TO AAA PRODUCTS AND MAY NOT BE DISCLOSED WITHOUT PRIOR WRITTEN CONSENT

P:\Engineering\Product\Valve Assembly\Classic\SO3EDOL\GSO3EDOL.dwg