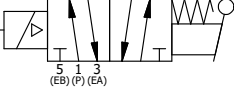


NOTES:
 1) ALWAYS GIVE VALVE MODEL AND PART NUMBER WHEN ORDERING PARTS.
 2) FOR DIFFERENT VOLTAGES OTHER THAN 120/60, REPLACE SOLENOID OPERATOR WITH OPERATOR LISTED IN TABLE BELOW.

| | | | |
|-----|-----|-----------|--|
| 12 | 2 | V-212 | SCREW, #2 X 3/16 DRIVE, TYPE U, OVAL HEAD, STAINLESS STEEL |
| 11 | 1 | AN-114 | NAMEPLATE, BLANK, FOR VALVES WITH SPRINGS OR DETENTS |
| 10 | 1 | V-70 | PIN, ROLL 1/4 X 1 1/8 FOR 3/4 & 1" HAND AND FOOT VALVES |
| 9 | 1 | HL8-9 | HAND LEVER ASSEMBLY, 3/4" & 1" VALVE |
| 8 | 1 | FEB | END CAP, HAND & FOOT, STEEL, NICKEL PLATE, 3/4" & 1" VALVES |
| 7 | 4 | V-46 | SCREW, 1/4-20 X 3/4, SOCKET HEAD CAP |
| 6 | 4 | V-47 | SCREW, 1/4-20 X 1, SOCKET HEAD CAP |
| 5 | 1 | AY-SAH8 | ASSY - RTRN TO POS A, CLASSIC SOL, 3/4" & 1" VALVE |
| 4 | 1 | AY-38X-11 | CLASSIC SOLENOID - EXPLOSION PROOF, 120/60VAC, 38.5VDC, 110/50VAC |
| 3 | 2 | ECG48 | GASKET - END CAP, 1/2", 3/4" & 1" VALVE |
| 2 | 6 | V-30 | O-RING, BUNA-N, 70 DURO, AS-220, (REF 1-3/8 X 1-5/8 X 1/8), 3/4" & 1" VALVES |
| 1 | 1 | B8-1 | BODY, 1" SIDE PORT, UPPER PILOTS, ANODIZED |
| FLG | QTY | PART NO | DESCRIPTION |



| OPERATOR VOLTAGES | |
|-------------------|------------------|
| PART NO | REPLACE OPERATOR |
| SAH8XZ 12VDC | AY-38X-5 |
| SAH8XZ 24VDC | AY-38X-8 |
| SAH8XZ 240/60 | AY-38X-17 |

LIMITS ON DIMENSIONS
 UNLESS OTHERWISE SPECIFIED
 2-PL DECIMAL ± .01
 3-PL DECIMAL ± .005
 FRACTIONAL ± 1/64
 ANGULAR ± 1/2°

DRAWN: RMckenna DATE: 11/21/2017
 SCALE: 3/4 SHEET: 1 OF 1

TITLE:
**1" SIDE PORT, SNGL SOL, 2 POS,
 SPR RTRN, SOL SHFT, LEVER ASSIST,
 EXPL PROOF, 120/60, EXT PILOT**

AAA PRODUCTS INTERNATIONAL
 7114 Harry Hines Blvd
 Dallas, TX 75235

CHECKED: KWaitte DATE: 11/21/2017
 RELEASED: HWomack DATE: 11/21/2017

PART NO.: **SAH8XZ** REV.:

THE INFORMATION CONTAINED WITHIN THIS DOCUMENT IS PROPRIETARY TO AAA PRODUCTS AND MAY NOT BE DISCLOSED WITHOUT PRIOR WRITTEN CONSENT

P:\Engineering\product\valves\assembly\classics\SAH8XZ\SAH8XZ.dwg