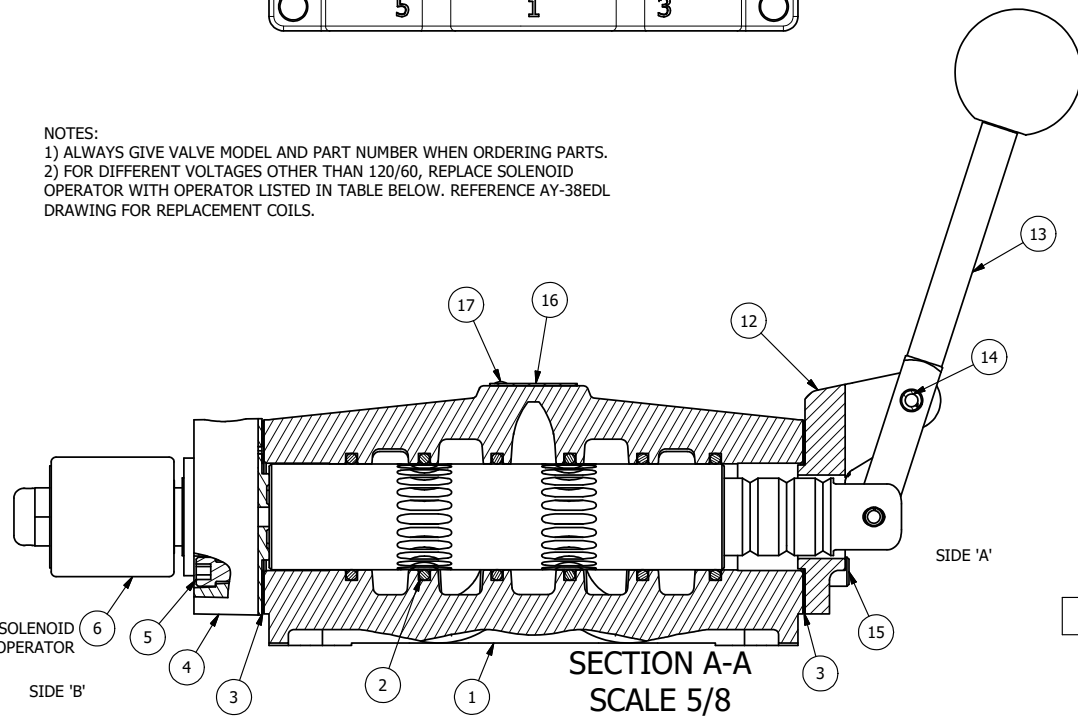


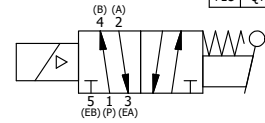
ALIGN PILOT AND HOLE IN GASKET, SIDE 'B' ONLY FOR EXTERNAL PILOT OPERATION - ROTATE THE ROUND ALUMINUM ADAPTOR 90 OR 180 DEGREES. REMOVE 1/8" NPTF PLUG AND SUPPLY 50-160 PSI TO 1/8" NPTF PILOT PORT IN ADAPTOR.

POSITION GASKET ON END OF VALVE SO GASKET COVERS PILOT HOLE SIDE 'A' ONLY

NOTES:  
 1) ALWAYS GIVE VALVE MODEL AND PART NUMBER WHEN ORDERING PARTS.  
 2) FOR DIFFERENT VOLTAGES OTHER THAN 120/60, REPLACE SOLENOID OPERATOR WITH OPERATOR LISTED IN TABLE BELOW. REFERENCE AY-38EDL DRAWING FOR REPLACEMENT COILS.



|     |     |             |   |
|-----|-----|-------------|---|
| 17  | 2   | V-212       | SCREW, #2 X 3/16 DRIVE, TYPE U, OVAL HEAD, STAINLESS STEEL                      |
| 16  | 1   | AN-114      | NAMEPLATE, BLANK, FOR VALVES WITH SPRINGS OR DETENTS                            |
| 15  | 4   | V-46        | SCREW, 1/4-20 X 3/4, SOCKET HEAD CAP  |
| 14  | 1   | V-70        | PIN, ROLL 1/4 X 1 1/8 FOR 3/4 & 1" VALVE  |
| 13  | 1   | HL8-9       | HAND LEVER ASSEMBLY, 3/4" & 1" VALVE  |
| 12  | 1   | FEB         | END CAP, HAND & FOOT, STEEL, NICKEL PLATE, 3/4" & 1" VALVES                     |
| 11  | 1   | V-19        | PLUG, SOCKET PIPE 1/8" NPT, 7/8 TAPER, FLUSH SEAL                               |
| 10  | 1   | OS3W        | SPRING - OVERRIDE RETURN, "CLASSIC" SOLENOID                                    |
| 9   | 1   | OP4-W       | OVERRIDE PIN, SPRING RETURN, 1/2", 3/4" & 1" VALVE                              |
| 8   | 1   | V-81        | SCREW, 8-32 X 5/16, SOCKET SET, FULL DOG POINT                                  |
| 7   | 2   | V-85        | O-RING, BUNA-N, 70 DURO, AS-010, (REF 1/4 X 3/8 X 1/16), CLASSIC OVRD           |
| 6   | 1   | AY-38EDL-11 | CLASSIC SOLENOID - ISO 4400 DIN, DUST EXCLUDER NUT, 120/60                      |
| 5   | 4   | V-47        | SCREW, 1/4-20 X 1, SOCKET HEAD CAP  |
| 4   | 1   | AY-SAH8ON   | ASSY - RTRN TO POS A, CLASSIC SOL W/LEVER OVRD, NON-LCKNG OVRD, 3/4" & 1" VALVE |
| 3   | 2   | ECG48       | GASKET - END CAP, 1/2", 3/4" & 1" VALVE   |
| 2   | 6   | V-30        | O-RING, BUNA-N, 70 DURO, AS-220, (REF 1-3/8 X 1-5/8 X 1/8), 3/4" & 1" VALVES    |
| 1   | 1   | B8-1        | BODY, 1" SIDE PORT, UPPER PILOTS, ANODIZED                                      |
| FLG | QTY | PART NO     | DESCRIPTION   |



| OPERATOR VOLTAGES |                  |
|-------------------|------------------|
| PART NO           | REPLACE OPERATOR |
| SAH8EDONL 12VDC   | AY-38EDL-5       |
| SAH8EDONL 24VDC   | AY-38EDL-8       |
| SAH8EDONL 240/60  | AY-38EDL-17      |

|  |                 |  |                               |  |
|--|-----------------|--|-------------------------------|--|
| LIMITS ON DIMENSIONS UNLESS OTHERWISE SPECIFIED  |                 | 2-PL DECIMAL ± .01<br>3-PL DECIMAL ± .005<br>FRACTIONAL ± 1/64<br>ANGULAR ± 1/2° |                               | <b>AAA PRODUCTS INTERNATIONAL</b><br>7114 Harry Hines Blvd<br>Dallas, TX 75235 |
| DRAWN: RMckenna  | DATE: 5/14/2021 | CHECKED: KWaite  | DATE: 5/14/2021               |  |
| SCALE: 3/4   | SHEET: 1 OF 1   | RELEASED: HWomack  | DATE: 5/14/2021               |  |
| TITLE:<br><b>1" SIDE PORT, SNGL SOL, 2 POS, SPR RTRN, ISO4400 DIN, 120/60, NON-LCK OVRD, EXCLDR, LVR AST</b> |                 |  | PART NO.:<br><b>SAH8EDONL</b> | REV.:  |

THE INFORMATION CONTAINED WITHIN THIS DOCUMENT IS PROPRIETARY TO AAA PRODUCTS AND MAY NOT BE DISCLOSED WITHOUT PRIOR WRITTEN CONSENT

P:\Engineering\product\valves\assembly\classict\SAH8EDL.DWG SAH8EDONL.dwg