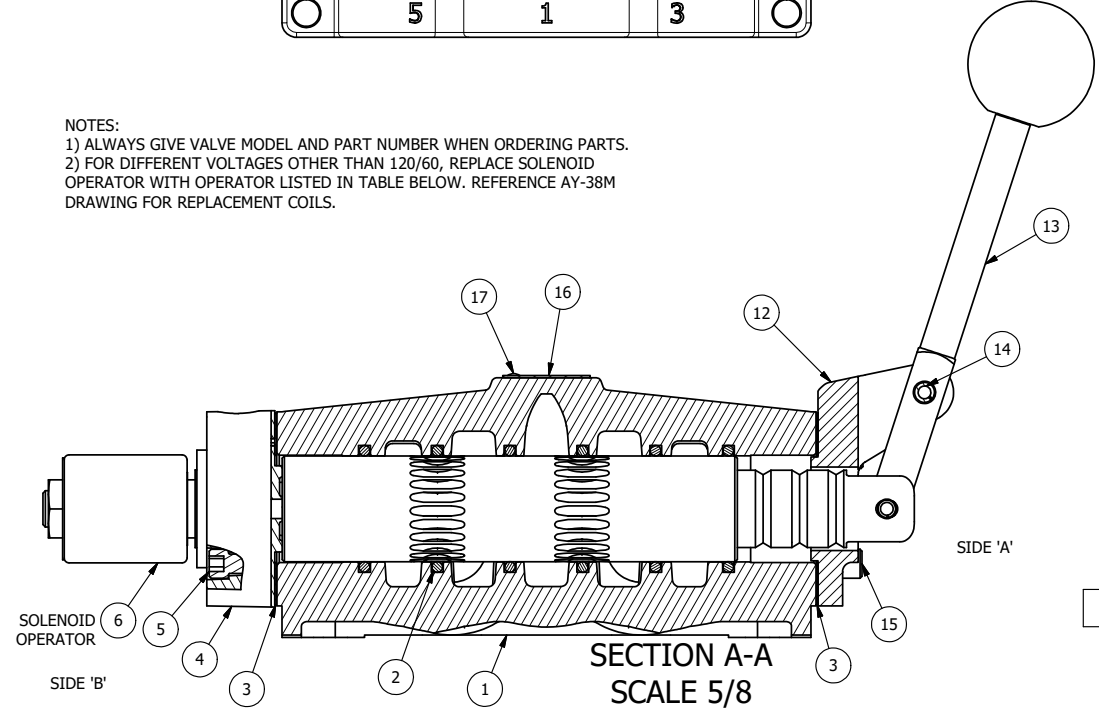


ALIGN PILOT AND HOLE IN GASKET, SIDE 'B' ONLY FOR EXTERNAL PILOT OPERATION - ROTATE THE ROUND ALUMINUM ADAPTOR 90 OR 180 DEGREES. REMOVE 1/8" NPTF PLUG AND SUPPLY 50-160 PSI TO 1/8" NPTF PILOT PORT IN ADAPTOR.

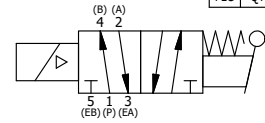
POSITION GASKET ON END OF VALVE SO GASKET COVERS PILOT HOLE SIDE 'A' ONLY

NOTES:  
 1) ALWAYS GIVE VALVE MODEL AND PART NUMBER WHEN ORDERING PARTS.  
 2) FOR DIFFERENT VOLTAGES OTHER THAN 120/60, REPLACE SOLENOID OPERATOR WITH OPERATOR LISTED IN TABLE BELOW. REFERENCE AY-38M DRAWING FOR REPLACEMENT COILS.

|     |     |           |   |
|-----|-----|-----------|---|
| 17  | 2   | V-212     | SCREW, #2 X 3/16 DRIVE, TYPE U, OVAL HEAD, STAINLESS STEEL                      |
| 16  | 1   | AN-114    | NAMEPLATE, BLANK, FOR VALVES WITH SPRINGS OR DETENTS                            |
| 15  | 4   | V-46      | SCREW, 1/4-20 X 3/4, SOCKET HEAD CAP  |
| 14  | 1   | V-70      | PIN, ROLL 1/4 X 1 1/8 FOR 3/4 & 1" HAND AND FOOT VALVES                         |
| 13  | 1   | HL8-9     | HAND LEVER ASSEMBLY, 3/4" & 1" VALVE  |
| 12  | 1   | FEB       | END CAP, HAND & FOOT, STEEL, NICKEL PLATE, 3/4" & 1" VALVES                     |
| 11  | 1   | V-19      | PLUG, SOCKET PIPE 1/8" NPT (#601-3 PITTSBURG PLUG PART #.)                      |
| 10  | 1   | OS3W      | SPRING - OVERRIDE RETURN, "CLASSIC" SOLENOID                                    |
| 9   | 1   | OP4-W     | OVERRIDE PIN, SPRING RETURN, 1/2", 3/4" & 1" VALVE                              |
| 8   | 1   | V-81      | SCREW, 8-32 X 5/16, SOCKET SET, FULL DOG POINT                                  |
| 7   | 2   | V-85      | O-RING, BUNA-N, 70 DURO, AS-010, (REF 1/4 X 3/8 X 1/16), CLASSIC OVRD           |
| 6   | 1   | AY-38M-11 | CLASSIC SOLENOID - 1/2" NPT CONDUIT, 120/60                                     |
| 5   | 4   | V-47      | SCREW, 1/4-20 X 1, SOCKET HEAD CAP  |
| 4   | 1   | AY-SAH80N | ASSY - RTRN TO POS A, CLASSIC SOL W/LEVER OVRD, NON-LCKNG OVRD, 3/4" & 1" VALVE |
| 3   | 2   | ECG48     | GASKET - END CAP, 1/2", 3/4" & 1" VALVE   |
| 2   | 6   | V-30      | O-RING, BUNA-N, 70 DURO, AS-220, (REF 1-3/8 X 1-5/8 X 1/8), 3/4" & 1" VALVES    |
| 1   | 1   | B6-1      | BODY, 3/4" SIDE PORT, UPPER PILOTS, ANODIZED                                    |
| FLG | QTY | PART NO   | DESCRIPTION   |



SECTION A-A  
 SCALE 5/8  
 VIEW FROM 3 PORT SIDE



| OPERATOR VOLTAGES |                  |
|-------------------|------------------|
| PART NO           | REPLACE OPERATOR |
| SAH6MON 12VDC     | AY-38M-5         |
| SAH6MON 24VDC     | AY-38M-8         |
| SAH6MON 240/60    | AY-38M-17        |

|  |                  |  |                      |  |
|--|------------------|--|----------------------|--|
| LIMITS ON DIMENSIONS<br>UNLESS OTHERWISE SPECIFIED   |                  | 2-PL DECIMAL ± .01<br>3-PL DECIMAL ± .005<br>FRACTIONAL ± 1/64<br>ANGULAR ± 1/2° |                      | <b>AAA PRODUCTS INTERNATIONAL</b><br>7114 Harry Hines Blvd<br>Dallas, TX 75235 |
| DRAWN: RMckenna  | DATE: 11/19/2017 | CHECKED: KWaite  | DATE: 11/19/2017     |  |
| SCALE: 3/4   | SHEET: 1 OF 1    | RELEASED: HWomack  | DATE: 11/19/2017     |  |
| TITLE:<br>3/4" SIDE PORT, SNGL SOL, 2 POS, SPR RTRN, SOL SHFT, LEVER ASSIST, MOLD-OVER, 120/60, N-LCKNG OVRD |                  |  | PART NO.:<br>SAH6MON | REV.:  |

THE INFORMATION CONTAINED WITHIN THIS DOCUMENT IS PROPRIETARY TO AAA PRODUCTS AND MAY NOT BE DISCLOSED WITHOUT PRIOR WRITTEN CONSENT

P:\Engineering\product\Valve\Assembley\Classic\SAP\DWG\SAH6MON.dwg