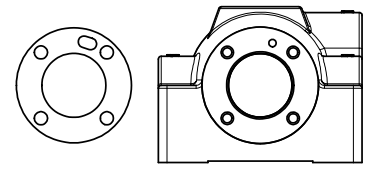


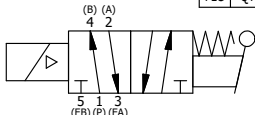
POSITION GASKET ON END OF VALVE SO GASKET COVERS PILOT HOLE SIDE 'A' ONLY



ALIGN PILOT AND HOLE IN GASKET, SIDE 'B' ONLY FOR EXTERNAL PILOT OPERATION - ROTATE THE ROUND ALUMINUM ADAPTOR 90 OR 180 DEGREES. REMOVE 1/8" NPTF PLUG AND SUPPLY 50-160 PSI TO 1/8" NPTF PILOT PORT IN ADAPTOR.

NOTES:  
 1) ALWAYS GIVE VALVE MODEL AND PART NUMBER WHEN ORDERING PARTS.  
 2) FOR DIFFERENT VOLTAGES OTHER THAN 120/60, REPLACE SOLENOID OPERATOR WITH OPERATOR LISTED IN TABLE BELOW. REFERENCE AY-38EDL DRAWING FOR REPLACEMENT COILS.

13	1	V-19	PLUG, SOCKET PIPE 1/8" NPT (#601-3 PITTSBURG PLUG PART #.)
12	2	V-212	SCREW, #2 X 3/16 DRIVE, TYPE U, OVAL HEAD, STAINLESS STEEL
11	1	AN-114	NAMEPLATE, BLANK, FOR VALVES WITH SPRINGS OR DETENTS
10	1	V-70	PIN, ROLL 1/4 X 1 1/8 FOR 3/4 & 1" HAND AND FOOT VALVES
9	1	HL8-9	HAND LEVER ASSEMBLY, 3/4" & 1" VALVE
8	1	FEB	END CAP, HAND & FOOT, STEEL, NICKEL PLATE, 3/4" & 1" VALVES
7	4	V-46	SCREW, 1/4-20 X 3/4, SOCKET HEAD CAP
6	4	V-47	SCREW, 1/4-20 X 1, SOCKET HEAD CAP
5	1	AY-SAH8	ASSY - RTRN TO POS A, CLASSIC SOL, 3/4" & 1" VALVE
4	1	AY-38EDL-11	CLASSIC SOLENOID - ISO 4400 DIN, DUST EXCLUDER NUT, 120/60
3	2	ECG48	GASKET - END CAP, 1/2", 3/4" & 1" VALVE
2	6	V-30	O-RING, BUNA-N, 70 DURO, AS-220, (REF 1-3/8 X 1-5/8 X 1/8), 3/4" & 1" VALVES
1	1	B6-1	BODY, 3/4" SIDE PORT, UPPER PILOTS, ANODIZED
FLG	QTY	PART NO	DESCRIPTION



LIMITS ON DIMENSIONS UNLESS OTHERWISE SPECIFIED		2-PL DECIMAL ± .01 3-PL DECIMAL ± .005 FRACTIONAL ± 1/64 ANGULAR ± 1/2		<b>AAA PRODUCTS INTERNATIONAL</b> 7114 Harry Hines Blvd Dallas, TX 75235										
DRAWN: RMckenna		DATE: 11/18/2017			CHECKED: KWaite	DATE: 11/18/2017								
SCALE: 3/4		SHEET: 1 OF 1		RELEASED: HWomack	DATE: 11/18/2017									
TITLE: <b>3/4" SIDE PORT, SNGL SOL, 2 POS, SPR RTRN, SOL SHFT, LEVER ASSIST, ISO 4400 DIN, 120/60, DUST EXCLDR</b>				PART NO.:	SAH6EDL									
OPERATOR VOLTAGES <table border="1"> <tr> <th>PART NO</th> <th>REPLACE OPERATOR</th> </tr> <tr> <td>SAH6EDL 12VDC</td> <td>AY-38EDL-5</td> </tr> <tr> <td>SAH6EDL 24VDC</td> <td>AY-38EDL-8</td> </tr> <tr> <td>SAH6EDL 240/60</td> <td>AY-38EDL-17</td> </tr> </table>					PART NO	REPLACE OPERATOR	SAH6EDL 12VDC	AY-38EDL-5	SAH6EDL 24VDC	AY-38EDL-8	SAH6EDL 240/60	AY-38EDL-17	REV.:	
PART NO	REPLACE OPERATOR													
SAH6EDL 12VDC	AY-38EDL-5													
SAH6EDL 24VDC	AY-38EDL-8													
SAH6EDL 240/60	AY-38EDL-17													

THE INFORMATION CONTAINED WITHIN THIS DOCUMENT IS PROPRIETARY TO AAA PRODUCTS AND MAY NOT BE DISCLOSED WITHOUT PRIOR WRITTEN CONSENT

P:\Engineering\Product Valve Assembly\Classic\SAH6EDL\DWG\SAH6EDL.dwg