

POSITION GASKET TO SEAL PILOT HOLE ON SIDE 'B' AS SHOWN.

ALIGN PILOT HOLE AND CENTER CUTOUT ON SIDE 'A' AS SHOWN.

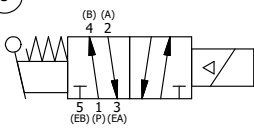
ALIGN HOLES IN GASKET AS SHOWN.  
(FOR EXTERNAL PILOT, TOP PILOT MUST BE PLUGGED  
SEE B2-6EZ BODY PRINT)

NOTES:  
1) ALWAYS GIVE VALVE MODEL AND PART NUMBER WHEN ORDERING PARTS.  
2) FOR DIFFERENT VOLTAGES OTHER THAN 120/60, REPLACE SOLENOID OPERATOR WITH OPERATOR LISTED IN TABLE BELOW. REFERENCE AY-38M DRAWING FOR REPLACEMENT COILS.

|     |     |           |   |
|-----|-----|-----------|---|
| 19  | 1   | V-81      | SCREW, 8-32 X 5/16, SOCKET SET, FULL DOG POINT                        |
| 18  | 2   | V-212     | SCREW, #2 X 3/16 DRIVE, TYPE U, OVAL HEAD, STAINLESS STEEL            |
| 17  | 1   | AN-114    | NAMEPLATE, BLANK, FOR VALVES WITH SPRINGS OR DETENTS                  |
| 16  | 1   | V-19      | PLUG, SOCKET PIPE 1/8" NPT (#601-3 PITTSBURG PLUG PART #.)            |
| 15  | 1   | AY-SAH3   | SPRING SPOOL ASSY - 2 POS., SOL W/HANDLE O'RIDE, 1/4" & 3/8" VALVES   |
| 14  | 1   | AY-38M-11 | CLASSIC SOLENOID - 1/2" NPT CONDUIT, 120/60                           |
| 13  | 1   | V-85      | O-RING, BUNA-N, 70 DURO, AS-010, (REF 1/4 X 3/8 X 1/16), CLASSIC OVRD |
| 12  | 1   | OS3W      | SPRING - OVERRIDE RETURN, "CLASSIC" SOLENOID                          |
| 11  | 1   | OP3-W     | VERRIDE PIN - SPRING RETURN, 1/4" & 3/8" VALVE                        |
| 10  | 4   | V-1       | SCREW, 10-24 X 2, SOCKET HEAD CAP                                     |
| 9   | 1   | PB3-3EW   | ADAPTOR - SNGL SOL., NON-LOCKING OVERRIDE, 1/4" & 3/8" VALVE          |
| 8   | 1   | PBG3-1    | GASKET - PIGGY BACK, SINGLE SOLENOID, 1/4" & 3/8" VALVE               |
| 7   | 1   | HE3-1     | END CAP, LEVER, 380 AL, 1/4" & 3/8" VALVE                             |
| 6   | 1   | HL3-24    | HAND LEVER WITH KNOB, 1/4" & 3/8" VALVE                               |
| 5   | 1   | V-7       | PIN, ROLL 3/16 X 11/16, STEEL, FOR 1/4 THRU 1/2" HAND, FT & CAM V     |
| 4   | 8   | V-38      | SCREW, 10-24 X 3/4, SOCKET HEAD CAP                                   |
| 3   | 2   | ECG3      | GASKET - END CAP, 1/4" & 3/8" VALVE                                   |
| 2   | 6   | V-39      | O-RING, VITON, STD BODY, 1/4" & 3/8" VALVES                           |
| 1   | 1   | B3-6E     | BODY - SOLID, PIGGY BACK, ANODIZED, 3/8" SIDE PORT VALVE              |
| FLG | QTY | PART NO   | DESCRIPTION   |

|   |                  |  |  |
|---|------------------|--|--|
| LIMITS ON DIMENSIONS<br>UNLESS OTHERWISE SPECIFIED  |                  | 2-PL DECIMAL ± .01<br>3-PL DECIMAL ± .005<br>FRACTIONAL ± 1/64<br>ANGULAR ± 1/2° | <b>AAA PRODUCTS INTERNATIONAL</b><br>7114 Harry Hines Blvd<br>Dallas, TX 75235 |
| DRAWN: RMckenna   | DATE: 11/19/2017 | CHECKED: KWaitte   |  |
| SCALE: 1 : 1  | SHEET: 1 OF 1    | RELEASED: HWomack  | DATE: 11/19/2017   |
| TITLE:<br><b>3/8" SIDE PORT, SNGL SOL, 2 POS, SPR RTRN, SOL SHFT, LEVER ASSIST, MOLD-OVER, 120/60, N-LCKNG OVRD</b> |                  | PART NO.:  | REV.:  |
|   |                  | SAH3MON  |  |

| OPERATOR VOLTAGES |                  |
|-------------------|------------------|
| PART NO           | REPLACE OPERATOR |
| SAH3MON 12VDC     | AY-38M-5         |
| SAH3MON 24VDC     | AY-38M-8         |
| SAH3MON 240/60    | AY-38M-17        |



THE INFORMATION CONTAINED WITHIN THIS DOCUMENT IS PROPRIETARY TO AAA PRODUCTS AND MAY NOT BE DISCLOSED WITHOUT PRIOR WRITTEN CONSENT

P:\Engineering\Product\Valve Assembly\Classic\SAP\DWG\SAH3MON.dwg