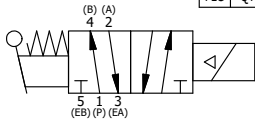


- NOTES:
- 1) ALWAYS GIVE VALVE MODEL AND PART NUMBER WHEN ORDERING.
 - 2) OPEN MUFLER 2 TURNS FROM CLOSED POSITION. TIGHTEN LOCK NUT ON MUFLER.
 - 3) INSTALL MUFLER WITH MAGNALUBE-G GREASE 1 TO 1-1/2 TURNS FROM HAND TIGHT INTO BODY.
 - 4) FOR DIFFERENT VOLTAGES OTHER THAN 120/60, REPLACE TOP CONTROL VALVE WITH VALVE LISTED IN TABLE BELOW.

THE FOLLOWING PARTS ARE INCLUDED WITH THE SUBPLATE VALVE AND ARE USED TO ASSEMBLE.

| QTY | PART NO | DESCRIPTION |
|-----|---------|--|
| 5 | V-92 | O-RING, BUNA-N, 70 DURO, AS-014, (REF 1/2 X 5/8 X 1/16), 3/8" SUBPLATE |
| 4 | V-35 | SCREW, 10-24 X 7/8, SOCKET HEAD CAP |

| | | | |
|-----|-----|----------|---|
| 11 | 1 | SAH3POPT | 3/8" SUBPLATE, SNGL SOL, 2 POS, SPR RTRN, CLASSIC, 120/60, PUSH OVRD, TPD VENT, LVR AST |
| 10 | 2 | MFC2 | ASSEMBLY - MUFLER FLOW CONTROL, 1/4" NPT |
| 9 | 3 | V-337 | PLUG, SOCKET 1/4-18 FLUSH SEAL PLUG |
| 8 | 2 | V-124 | O-RING, BUNA-N, 70 DURO, AS-231, (REF 2-5/8 X 2-7/8 X 1/8), 2 POS, 1-1/2" & 2" VALVES |
| 7 | 2 | V-89 | O-RING, BUNA-N, 70 DURO, AS-110, (REF 3/8 X 9/16 X 3/32), 1" & 2" SUBPLATE PILOT |
| 6 | 2 | V-231 | PLUG, SOCKET PRESSURE 1/16-27X 7/8 TAPER FOR 122V,192V,FOR EC |
| 5 | 12 | V-143 | SCREW, 5/16-18 X 2, SOCKET HEAD CAP |
| 4 | 2 | PEC12E | ENDCAP - PILOT, SOLID, 6061-T6 AL, 1-1/2" & 2" VALVES |
| 3 | 1 | S12 | SPOOL - STANDARD, 2 POS - 3 POS CLOSED CTR, 1 1/2" & 2" VALVE |
| 2 | 6 | V-123 | O-RING, BUNA-N, 70 DURO, AS-331, (REF 2-1/4 X 2-5/8 X 3/16), 1-1/2" & 2" VALVES |
| 1 | 1 | B12-6 | BODY, 1 1/2" SIDE PORT, PIGGY BACK |
| FLG | QTY | PART NO | DESCRIPTION |



| OPERATOR VOLTAGES | |
|-------------------|-----------------|
| PART NO | REPLACE WITH |
| SAH12OPT 12VDC | SAH3POPT 12VDC |
| SAH12OPT 24VDC | SAH3POPT 24VDC |
| SAH12OPT 240/60 | SAH3POPT 240/60 |

LIMITS ON DIMENSIONS
UNLESS OTHERWISE SPECIFIED

2-PL DECIMAL ± .01
3-PL DECIMAL ± .005
FRACTIONAL ± 1/64
ANGULAR ± 1/2°

AAA PRODUCTS INTERNATIONAL
7114 Harry Hines Blvd
Dallas, TX 75235

| | | | |
|--|-----------------|--------------------|-----------------|
| DRAWN: RMckenna | DATE: 5/15/2021 | CHECKED: KWaite | DATE: 5/15/2021 |
| SCALE: 1/2 | SHEET: 1 OF 1 | RELEASED: HWormack | DATE: 5/15/2021 |
| TITLE: 1-1/2" SIDE PORT, SNGL SOL, 2 POS, SPR RTRN, CLASSIC, 120/60, PUSH OVRD, TPD VENT, LVR AST | | PART NO.: | REV.: |
| | | SAH12OPT | |

THE INFORMATION CONTAINED WITHIN THIS DOCUMENT IS PROPRIETARY TO AAA PRODUCTS AND MAY NOT BE DISCLOSED WITHOUT PRIOR WRITTEN CONSENT

D:\Engineering\Products\Valves\Assembly\Cases\SAH12OPT.dwg