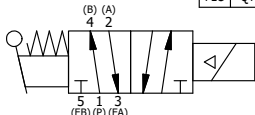


- NOTES:
- 1) ALWAYS GIVE VALVE MODEL AND PART NUMBER WHEN ORDERING.
  - 2) OPEN MUFFLER 2 TURNS FROM CLOSED POSITION. TIGHTEN LOCK NUT ON MUFFLER.
  - 3) INSTALL MUFFLER WITH MAGNALUBE-G GREASE 1 TO 1-1/2 TURNS FROM HAND TIGHT INTO BODY.
  - 4) FOR DIFFERENT VOLTAGES OTHER THAN 120/60, REPLACE TOP CONTROL VALVE WITH VALVE LISTED IN TABLE BELOW.

THE FOLLOWING PARTS ARE INCLUDED WITH THE SUBPLATE VALVE AND ARE USED TO ASSEMBLE.

| QTY | PART NO | DESCRIPTION  |
|-----|---------|--|
| 5   | V-92    | O-RING, BUNA-N, 70 DURO, AS-014, (REF 1/2 X 5/8 X 1/16), 3/8" SUBPLATE |
| 4   | V-35    | SCREW, 10-24 X 7/8, SOCKET HEAD CAP                                    |

|     |     |          |   |
|-----|-----|----------|---|
| 11  | 1   | SAH3PEDT | 3/8" SUBPLATE, SNGL SOL, 2 POS, SPR RTRN, LEVER ASSIST, ISO 4400 DIN, 120/60, TAPPED VENT |
| 10  | 2   | MFC2     | ASSEMBLY - MUFFLER FLOW CONTROL, 1/4" NPT   |
| 9   | 3   | V-337    | PLUG, SOCKET 1/4-18 FLUSH SEAL PLUG   |
| 8   | 2   | V-124    | O-RING, BUNA-N, 70 DURO, AS-231, (REF 2-5/8 X 2-7/8 X 1/8), 2 POS, 1-1/2" & 2" VALVES     |
| 7   | 2   | V-89     | O-RING, BUNA-N, 70 DURO, AS-110, (REF 3/8 X 9/16 X 3/32), 1" & 2" SUBPLATE PILOT          |
| 6   | 2   | V-231    | PLUG, SOCKET PRESSURE 1/16-27X 7/8 TAPER FOR 122V, 192V, FOR EC                           |
| 5   | 12  | V-143    | SCREW, 5/16-18 X 2, SOCKET HEAD CAP   |
| 4   | 2   | PEC12E   | ENDCAP - PILOT, SOLID, 6061-T6 AL, 1-1/2" & 2" VALVES                                     |
| 3   | 1   | S12      | SPOOL - STANDARD, 2 POS - 3 POS CLOSED CTR, 1 1/2" & 2" VALVE                             |
| 2   | 6   | V-123    | O-RING, BUNA-N, 70 DURO, AS-331, (REF 2-1/4 X 2-5/8 X 3/16), 1-1/2" & 2" VALVES           |
| 1   | 1   | B12-6    | BODY, 1 1/2" SIDE PORT, PIGGY BACK  |
| FLG | QTY | PART NO  | DESCRIPTION   |



| OPERATOR VOLTAGES |                 |
|-------------------|-----------------|
| PART NO           | REPLACE WITH    |
| SAH12EDT 12VDC    | SAH3PEDT 12VDC  |
| SAH12EDT 24VDC    | SAH3PEDT 24VDC  |
| SAH12EDT 240/60   | SAH3PEDT 240/60 |

LIMITS ON DIMENSIONS  
UNLESS OTHERWISE SPECIFIED

2-PL DECIMAL ± .01  
3-PL DECIMAL ± .005  
FRACTIONAL ± 1/64  
ANGULAR ± 1/2°

**AAA PRODUCTS INTERNATIONAL**  
7114 Harry Hines Blvd  
Dallas, TX 75235

|  |                  |                   |                       |
|--|------------------|-------------------|-----------------------|
| DRAWN: RMckenna  | DATE: 11/27/2017 | CHECKED: KWaite   | DATE: 11/27/2017      |
| SCALE: 1/2   | SHEET: 1 OF 1    | RELEASED: HWomack | DATE: 11/27/2017      |
| TITLE:<br>1-1/2" SIDE PORT, SNGL SOL, 2 POS, SPR RTRN, SOL SHFT, LEVER ASSIST, ISO 4400 DIN, 120/60, TAPPED VENT |                  |                   | PART NO.:<br>SAH12EDT |
| REV.:  |                  |                   |                       |

THE INFORMATION CONTAINED WITHIN THIS DOCUMENT IS PROPRIETARY TO AAA PRODUCTS AND MAY NOT BE DISCLOSED WITHOUT PRIOR WRITTEN CONSENT

D:\Engineering\product\Valve Assembly\Classic\SAP\DWG\SAH12EDT.dwg