

POSITION GASKET ON END OF VALVE TO ALIGN PILOT HOLES, SIDE 'B' ONLY

POSITION GASKET ON END OF VALVE TO SEAL PILOT HOLE IF PRESENT, SIDE 'A' ONLY

NOTES:  
 1) ALWAYS GIVE VALVE MODEL AND PART NUMBER WHEN ORDERING PARTS.  
 2) FOR DIFFERENT VOLTAGES OTHER THAN 120/60, REPLACE SOLENOID OPERATOR WITH OPERATOR LISTED IN TABLE BELOW. REFERENCE AY-38ED DRAWING FOR REPLACEMENT COILS.

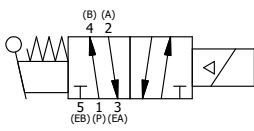
|     |     |            |   |
|-----|-----|------------|---|
| 18  | 3   | V-110      | O-RING, BUNA-N, 70 DURO, AS-114, (REF 5/8 X 13/16 X 3/32), 1/4" SLEEVE, 1/2" SUB, STACK |
| 17  | 1   | AN-114     | NAMEPLATE, BLANK, FOR VALVES WITH SPRINGS OR DETENTS                                    |
| 16  | 2   | V-212      | SCREW, #2 X 3/16 DRIVE, TYPE U, OVAL HEAD, STAINLESS STEEL                              |
| 15  | 1   | AY-BSAH30  | ASSY - NO DETENT, RTRN TO POS A, SOL W/LVR OVRD, 1/4" & 3/8" STACK, LCKNG OVRD          |
| 14  | 4   | V-1        | SCREW, 10-24 X 2, SOCKET HEAD CAP   |
| 13  | 1   | V-19       | PLUG, SOCKET PIPE 1/8" NPT (#601-3 PITTSBURG PLUG PART #.)                              |
| 12  | 1   | OP3        | PIN - MANUAL OVERRIDE, 1/4" & 3/8" VALVES   |
| 11  | 1   | OS3        | SPRING - MANUAL OVERRIDE, "CLASSIC" SOLENOID  |
| 10  | 1   | V-81       | SCREW, 8-32 X 5/16, SOCKET SET, FULL DOG POINT  |
| 9   | 1   | V-85       | O-RING, BUNA-N, 70 DURO, AS-010, (REF 1/4 X 3/8 X 1/16), CLASSIC OVRD                   |
| 8   | 1   | AY-38ED-11 | CLASSIC SOLENOID - ISO 4400 DIN, 120/60   |
| 7   | 1   | HE3-4      | ENDCAP - HAND OPERATOR, 303 STAINLESS, 1/4" & 3/8" STACK VALVE                          |
| 6   | 1   | HL3-24     | HAND LEVER WITH KNOB, 1/4" & 3/8" VALVE   |
| 5   | 1   | V-542      | PIN, ROLL 3/16 X 1/2 ZINC PLATED STEEL FOR HE3-4 ENDCAP                                 |
| 4   | 4   | V-162      | SCREW, 10-24 X 5/8, SOCKET HEAD CAP   |
| 3   | 2   | ECG3       | GASKET - END CAP, 1/4" & 3/8" VALVE   |
| 2   | 6   | V-39       | O-RING, VITON, STD BODY, 1/4" & 3/8" VALVES   |
| 1   | 1   | B3-10E     | FINISHED - SOLID BODY, UPPER PILOTS, 3/8" STACKING VALVE                                |
| FLG | QTY | PART NO    | DESCRIPTION   |

LIMITS ON DIMENSIONS  
 UNLESS OTHERWISE SPECIFIED  
 2-PL DECIMAL ± .01  
 3-PL DECIMAL ± .005  
 FRACTIONAL ± 1/64  
 ANGULAR ± 1/2°



DRAWN: RMckenna DATE: 11/13/2017 CHECKED: KWaite DATE: 11/13/2017  
 SCALE: 1 : 1 SHEET: 1 OF 1 RELEASED: HWomack DATE: 11/13/2017

| OPERATOR VOLTAGES |                  |
|-------------------|------------------|
| PART NO           | REPLACE OPERATOR |
| BSAH3EDO 12VDC    | AY-38ED-5        |
| BSAH3EDO 24VDC    | AY-38ED-8        |
| BSAH3EDO 240/60   | AY-38ED-17       |



TITLE: 3/8" STACK, SNGL SOL, 2 POS, SPR RTRN, SOL SHFT, LEVER ASSIST, ISO 4400 DIN, 120/60, LCKNG OVRD

PART NO.: BSAH3EDO

REV.:

THE INFORMATION CONTAINED WITHIN THIS DOCUMENT IS PROPRIETARY TO AAA PRODUCTS AND MAY NOT BE DISCLOSED WITHOUT PRIOR WRITTEN CONSENT

P:\Engineering\Product Valve Assembly\Classic\SA38\DWG\BSAH3EDO.dwg