

POSITION GASKET ON END OF VALVE TO ALIGN PILOT HOLES, SIDE 'B' ONLY

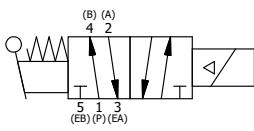
POSITION GASKET ON END OF VALVE TO SEAL PILOT HOLE IF PRESENT, SIDE 'A' ONLY

NOTES:  
 1) ALWAYS GIVE VALVE MODEL AND PART NUMBER WHEN ORDERING PARTS.  
 2) FOR DIFFERENT VOLTAGES OTHER THAN 120/60, REPLACE SOLENOID OPERATOR WITH OPERATOR LISTED IN TABLE BELOW. REFERENCE AY-38M DRAWING FOR REPLACEMENT COILS.

|     |     |           |   |
|-----|-----|-----------|---|
| 18  | 3   | V-110     | O-RING, BUNA-N, 70 DURO, AS-114, (REF 5/8 X 13/16 X 3/32), 1/4" SLEEVE, 1/2" SUB, STACK |
| 17  | 1   | AN-114    | NAMEPLATE, BLANK, FOR VALVES WITH SPRINGS OR DETENTS                                    |
| 16  | 2   | V-212     | SCREW, #2 X 3/16 DRIVE, TYPE U, OVAL HEAD, STAINLESS STEEL                              |
| 15  | 1   | AY-BSAH30 | ASSY - NO DETENT, RTRN TO POS A, SOL W/LVR OVRD, 1/4" & 3/8" STACK, LCKNG OVRD          |
| 14  | 4   | V-1       | SCREW, 10-24 X 2, SOCKET HEAD CAP   |
| 13  | 1   | V-19      | PLUG, SOCKET PIPE 1/8" NPT (#601-3 PITTSBURG PLUG PART #.)                              |
| 12  | 1   | POP-3     | OVERRIDE, PUSH PIN, 303 STAINLESS, 1/4" & 3/8" VALVE                                    |
| 11  | 1   | OS3       | SPRING - MANUAL OVERRIDE, "CLASSIC" SOLENOID  |
| 10  | 1   | V-81      | SCREW, 8-32 X 5/16, SOCKET SET, FULL DOG POINT  |
| 9   | 1   | V-85      | O-RING, BUNA-N, 70 DURO, AS-010, (REF 1/4 X 3/8 X 1/16), CLASSIC OVRD                   |
| 8   | 1   | AY-38M-11 | CLASSIC SOLENOID - 1/2" NPT CONDUIT, 120/60   |
| 7   | 1   | HE3-4     | ENDCAP - HAND OPERATOR, 303 STAINLESS, 1/4" & 3/8" STACK VALVE                          |
| 6   | 1   | HL3-24    | HAND LEVER WITH KNOB, 1/4" & 3/8" VALVE   |
| 5   | 1   | V-542     | PIN, ROLL 3/16 X 1/2 ZINC PLATED STEEL FOR HE3-4 ENDCAP                                 |
| 4   | 4   | V-162     | SCREW, 10-24 X 5/8, SOCKET HEAD CAP   |
| 3   | 2   | ECG3      | GASKET - END CAP, 1/4" & 3/8" VALVE   |
| 2   | 6   | V-39      | O-RING, VITON, STD BODY, 1/4" & 3/8" VALVES   |
| 1   | 1   | B2-10E    | FINISHED - SOLID BODY, UPPER PILOTS, 1/4" STACKING VALVE                                |
| FLG | QTY | PART NO   | DESCRIPTION   |

|   |                     |  |                  |
|---|---------------------|--|------------------|
| LIMITS ON DIMENSIONS<br>UNLESS<br>OTHERWISE SPECIFIED   | 2-PL DECIMAL ± .01  | <b>AAA PRODUCTS INTERNATIONAL</b><br>7114 Harry Hines Blvd<br>Dallas, TX 75235 |                  |
|   | 3-PL DECIMAL ± .005 |  |                  |
|   | FRACTIONAL ± 1/64   |  |                  |
|   | ANGULAR ± 1/2°      |  |                  |
| DRAWN: RMckenna   | DATE: 11/27/2017    | CHECKED: KWaite  | DATE: 11/27/2017 |
| SCALE: 1 : 1  | SHEET: 1 OF 1       | RELEASED: HWomack  | DATE: 11/27/2017 |
| TITLE:<br>1/4" STACK, SNGL SOL, 2 POS,<br>SPR RTRN, SOL SHFT, LEVER ASSIST,<br>MOLD-OVER, 120/60, PUSH OVRD |                     | PART NO.:  | REV.:            |
|   |                     | BSAH2MOP   |                  |

| OPERATOR VOLTAGES |                  |
|-------------------|------------------|
| PART NO           | REPLACE OPERATOR |
| BSAH2MOP 12VDC    | AY-38M-5         |
| BSAH2MOP 24VDC    | AY-38M-8         |
| BSAH2MOP 240/60   | AY-38M-17        |



THE INFORMATION CONTAINED WITHIN THIS DOCUMENT IS PROPRIETARY TO AAA PRODUCTS AND MAY NOT BE DISCLOSED WITHOUT PRIOR WRITTEN CONSENT