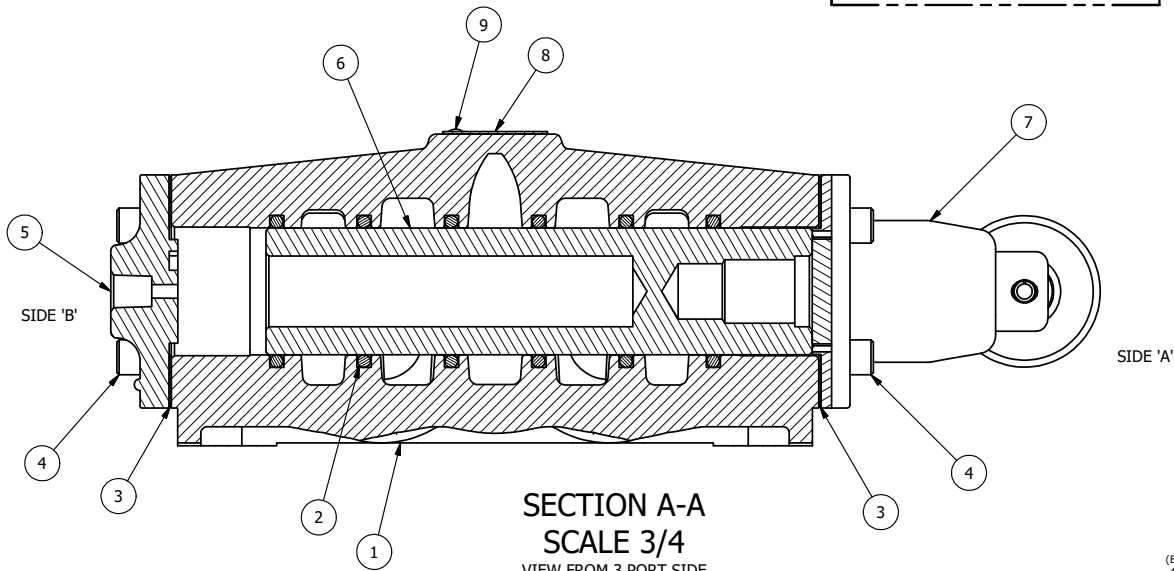


POSITION GASKET ON END OF VALVE SO  
GASKET SEALS PILOT HOLE  
BOTH SIDES (SIDE 'A' SHOWN)

NOTES:

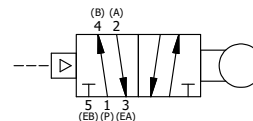
- 1) ALWAYS GIVE VALVE MODEL AND PART NUMBER WHEN ORDERING PARTS.
- 2) SEE AY-C8 ASSEMBLY PRINT FOR CAM OPERATOR PARTS DETAIL.



SECTION A-A  
SCALE 3/4  
VIEW FROM 3 PORT SIDE

| FLG | QTY | PART NO | DESCRIPTION  |
|-----|-----|---------|--|
| 9   | 2   | V-212   | SCREW, #2 X 3/16 DRIVE, TYPE U, OVAL HEAD, STAINLESS STEEL                   |
| 8   | 1   | AN-115  | BLANK NAMEPLATE FOR HE,KE,KD,RR,D,CR,PP,SR,SS VALVES.                        |
| 7   | 1   | AY-C8   | ASSY - CAM OPERATOR, 3/4" & 1" VALVES  |
| 6   | 1   | S8      | SPOOL - STANDARD, 2 POS, CLSD CTR, 3/4" & 1" VALVE                           |
| 5   | 1   | PEC48   | END CAP, PILOT, 380 AL, 1/2", 3/4" & 1" VALVES                               |
| 4   | 8   | V-46    | SCREW, 1/4-20 X 3/4, SOCKET HEAD CAP   |
| 3   | 2   | ECG48   | GASKET - END CAP, 1/2", 3/4" & 1" VALVE                                      |
| 2   | 6   | V-30    | O-RING, BUNA-N, 70 DURO, AS-220, (REF 1-3/8 X 1-5/8 X 1/8), 3/4" & 1" VALVES |
| 1   | 1   | B6-1    | BODY, 3/4" SIDE PORT, UPPER PILOTS, ANODIZED                                 |

|  |  |  |  |  |                 |
|--|--|--|--|--|-----------------|
| LIMITS ON DIMENSIONS<br>UNLESS OTHERWISE SPECIFIED   |  | 2-PL DECIMAL ± .01<br>3-PL DECIMAL ± .005<br>FRACTIONAL ± 1/64<br>ANGULAR ± 1/2° |  | <b>AAA PRODUCTS INTERNATIONAL</b><br>7114 Harry Hines Blvd<br>Dallas, TX 75235 |                 |
| DRAWN: RMckenna  |  | DATE: 9/25/2014  |  |  | CHECKED: KWaite |
| SCALE: 3/4   |  | SHEET: 1 OF 1  |  | RELEASED: HWomack  | DATE: 3/25/2015 |
| TITLE:<br>3/4" SIDE PORT, CAM ROLLER, 2 POS,<br>FRICTION POS, PILOT RTRN,<br>CAM ROTATED 90D |  |  |  | PART NO.:  | REV.:           |
|  |  |  |  | CR6R   |                 |



THE INFORMATION CONTAINED WITHIN THIS DOCUMENT IS PROPRIETARY TO AAA PRODUCTS AND MAY NOT BE DISCLOSED WITHOUT PRIOR WRITTEN CONSENT

P:\Engineering\product\Valve Assembly\Cam\CR6R\3/4\3/4 CR6R.dwg