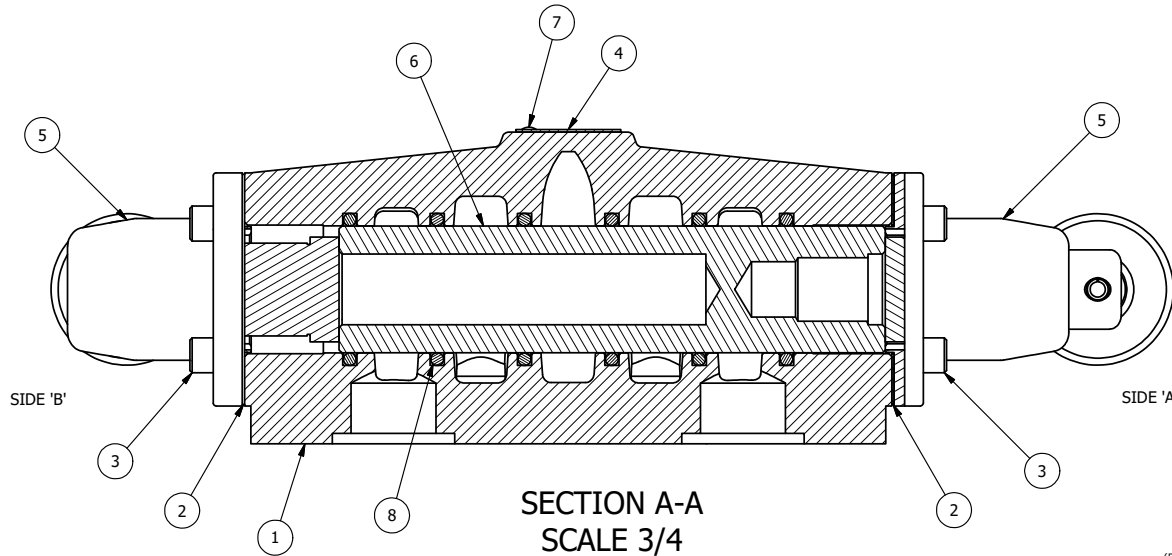


POSITION GASKET ON END OF VALVE SO
GASKET SEALS PILOT HOLE,
BOTH SIDES (SIDE 'A' SHOWN)

- NOTES:
1) ALWAYS GIVE VALVE MODEL AND PART NUMBER WHEN ORDERING PARTS.
2) SEE AY-C8 ASSEMBLY PRINT FOR CAM OPERATOR PARTS DETAIL.



SECTION A-A
SCALE 3/4
VIEW FROM 3 PORT SIDE

FLG	QTY	PART NO	DESCRIPTION
9	1	SPK-8	KIT - SUBPLATE MOUNT, 1" SUBPLATE VALVES
8	6	V-30	O-RING, BUNA-N, 70 DURO, AS-220, (REF 1-3/8 X 1-5/8 X 1/8), 3/4" & 1" VALVES
7	2	V-212	SCREW, #2 X 3/16 DRIVE, TYPE U, OVAL HEAD, STAINLESS STEEL
6	1	S8	SPOOL - STANDARD, 2 POS, CLSD CTR, 3/4" & 1" VALVE
5	2	AY-C8	ASSY - CAM OPERATOR, 3/4" & 1" VALVES
4	1	AN-115	BLANK NAMEPLATE FOR HE,KE,KD,RR,D,CR,PP,SR,SS VALVES.
3	8	V-46	SCREW, 1/4-20 X 3/4, SOCKET HEAD CAP
2	2	ECG48	GASKET - END CAP, 1/2", 3/4" & 1" VALVE
1	1	BP8-1	BODY, 1" SUBPLATE, UPPER PILOTS, ANODIZED

LIMITS ON DIMENSIONS
UNLESS
OTHERWISE SPECIFIED

2-PL DECIMAL ± .01
3-PL DECIMAL ± .005
FRACTIONAL ± 1/64
ANGULAR ± 1/2°



DRAWN: RMckenna DATE: 9/25/2014
SCALE: 3/4 SHEET: 1 OF 1

CHECKED: KWaite DATE: 3/25/2015
RELEASED: HWomack DATE: 3/25/2015

TITLE:
**1" SUBPLATE, CAM, 2 POS,
FRICTION POS, CAM RTRN**

PART NO.:
CC8P

REV.:

