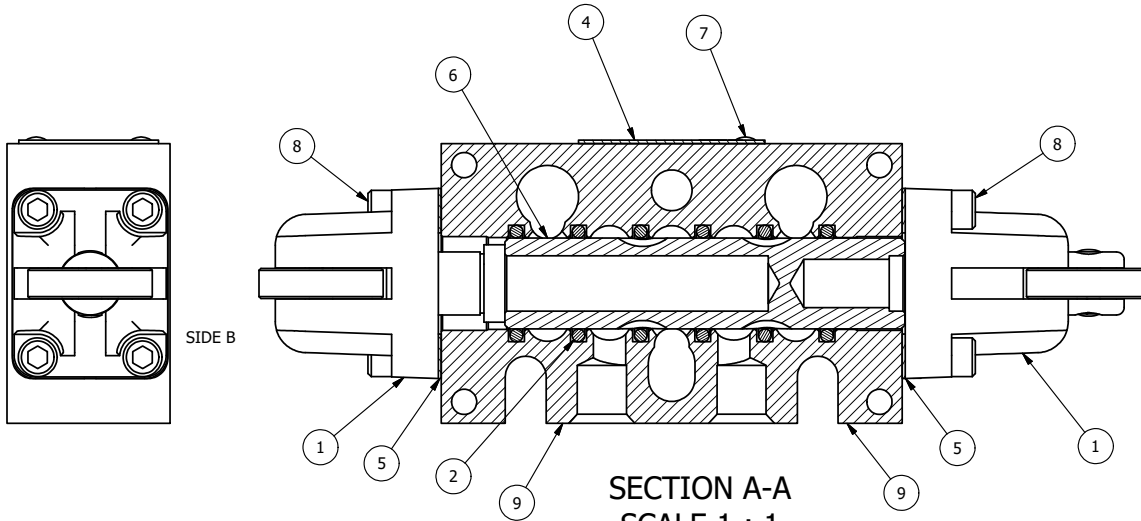


PILOT HOLE

POSITION GASKET ON END OF VALVE TO SEAL PILOT HOLE IF PRESENT, BOTH SIDES (SIDE 'B' SHOWN)



SECTION A-A
SCALE 1 : 1

NOTES:
1) ALWAYS GIVE VALVE MODEL AND PART NUMBER WHEN ORDERING PARTS.

SIDE A

| FLG | QTY | PART NO | DESCRIPTION |
|-----|-----|---------|---|
| 9 | 1 | B2-10E | FINISHED - SOLID BODY, UPPER PILOTS, 1/4" STACKING VALVE |
| 8 | 8 | V-38 | SCREW, 10-24 X 3/4, SOCKET HEAD CAP |
| 7 | 2 | V-212 | SCREW, #2 X 3/16 DRIVE, TYPE U, OVAL HEAD, STAINLESS STEEL |
| 6 | 1 | S3 | SPOOL - STANDARD, 2 POS, CLSD CTR, 1/4" & 3/8" VALVE |
| 5 | 2 | ECG3 | GASKET - END CAP, 1/4" & 3/8" VALVE |
| 4 | 1 | AN-115 | BLANK NAMEPLATE FOR HE,KE,KD,RR,D,CR,PP,SR,SS VALVES. |
| 3 | 3 | V-110 | O-RING, BUNA-N, 70 DURO, AS-114, (REF 5/8 X 13/16 X 3/32), 1/4" SLEEVE, 1/2" SUB, STACK |
| 2 | 6 | V-39 | O-RING, VITON, STD BODY, 1/4" & 3/8" VALVES |
| 1 | 2 | AY-C3 | CAM OPERATOR ASSEMBLY, 1/4" & 3/8" VALVES |

LIMITS ON DIMENSIONS
UNLESS OTHERWISE SPECIFIED

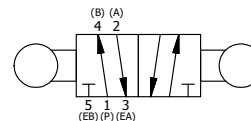
2-PL DECIMAL ± .01
3-PL DECIMAL ± .005
FRACTIONAL ± 1/64
ANGULAR ± 1/2°



DRAWN: RMckenna DATE: 9/25/2014 CHECKED: KWaite DATE: 3/25/2015
SCALE: 1 : 1 SHEET: 1 OF 1 RELEASED: HWomack DATE: 3/25/2015

TITLE:
**1/4" STACK, CAM ROLLER, 2 POS,
FRICTION POS, CAM RTRN,
CAM ROTATED 90D**

PART NO.: BCC2R REV.:



THE INFORMATION CONTAINED WITHIN THIS DOCUMENT IS PROPRIETARY TO AAA PRODUCTS AND MAY NOT BE DISCLOSED WITHOUT PRIOR WRITTEN CONSENT

P:\Engineering\Product Valve Assembly\Cam\CC1\BCC2R.dwg