

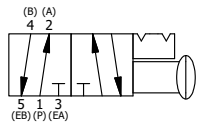
PANEL MOUNT
 1-1/8" HEX NUT
 WITH 7/8" DIA HOLE
 UP TO 1/4" PANEL

15/32
 7/16
 15/32
 15/32

7/8
 19/32
 1 1/2
 2 35/64
 7/83

Ø1 13/16

19/64
 15/16
 15/16
 7/16



AAA
 PRODUCTS
 INTERNATIONAL

**AAA PRODUCTS
 INTERNATIONAL**
 7114 Harry Hines Blvd
 Dallas, TX 75235

TITLE: 1/8" SIDE PORT, PALM, 2 POS,
 DETENT, PANEL MOUNT

DRAWING NO.:
 DIM_KD1QR

THE INFORMATION CONTAINED WITHIN THIS DOCUMENT IS PROPRIETARY TO AAA PRODUCTS AND MAY NOT BE DISCLOSED WITHOUT PRIOR WRITTEN CONSENT