


SEE NOTE 3 ⇒

FLG	QTY	PART NO	DESCRIPTION
	8	AY-5315	WIPER ASSEMBLY, JIFFY TAP LEAD SCREWS
	7	J-286	WOODRUFF #808 KEY, MODIFIED, JIFFY TAP & DRILL
	6	V-46	SCREW, 1/4-20 X 3/4, SOCKET HEAD CAP
	5	J-288	RING, RETAINER (N5100-102ZD)
	4	J-5308	DISC - SWITCH FORK, JIFFY TAP
	3	J-357	FITTING, GREASE (1/4-28 STRAIGHT ZERK)
	2	V-162	SCREW, 10-24 X 5/8, SOCKET HEAD CAP
	1	AY-LS-X	LEAD SCREW AND NUT ASSY, JIFFY TAP

NOTES:

- 1) WHEN ORDERING SPECIFY LEAD SCREW PITCH.
(EXAMPLE - 14 PITCH LEAD SCREW, ORDER LS-14)
- 2) SPINDLE, HOUSING, AND NUT ARE SOLD AS A COMPLETE ASSEMBLY.
(AY-LS-X CANNOT BE PURCHASED INDIVIDUALLY. ORDER AS LS-X)
- 3) SEE ASSEMBLY FOR INDIVIDUAL PARTS.

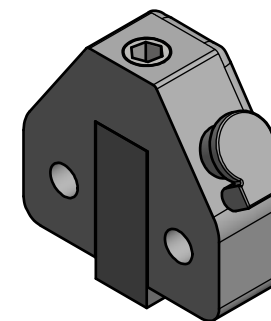
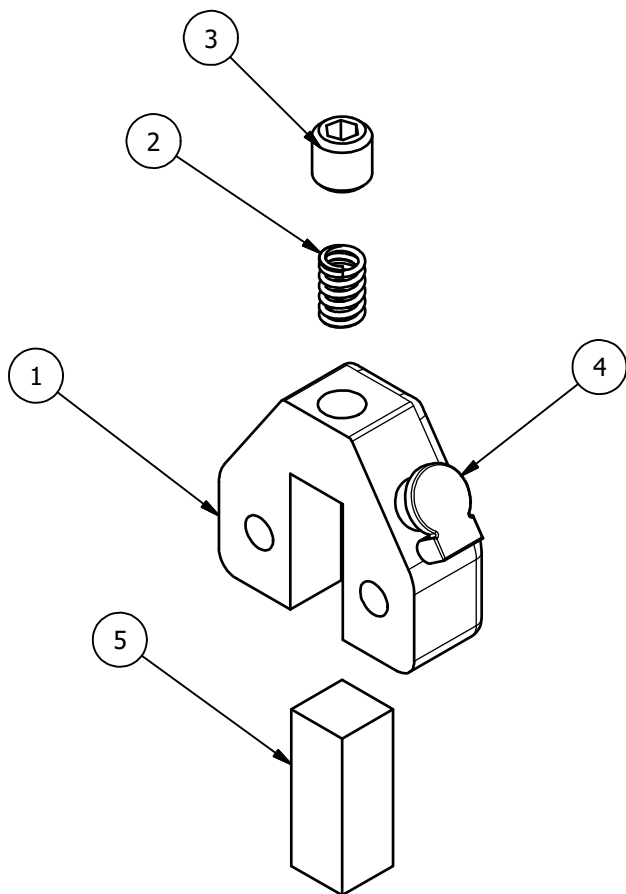
LIMITS ON DIMENSIONS UNLESS OTHERWISE SPECIFIED		2-PL DECIMAL ± .01 3-PL DECIMAL ± .005 FRACTIONAL ± 1/64 ANGULAR ± 1/2°		 AAA PRODUCTS INTERNATIONAL 7114 Harry Hines Blvd Dallas, TX 75235	
DRAWN: RMckenna		DATE: 1/23/1996		CHECKED: KWaite	
SCALE: 1/2		SHEET: 1 OF 1		RELEASED: HWomack	
TITLE: LEAD SCREW ASSEMBLY, SPECIFY PITCH, JIFFY TAP				PART NO.: LS-X	
				REV.:	

2

1


B

B



5	1	J-309	WIPER, FELT (F-1) 3/8 SQ
4	1	J-369	OILER, SHOULDER DRIVE, STYLE R, 3/16
3	1	V-8	SCREW, 5/16-18 X 5/16, SOCKET SET, CUP POINT
2	1	J-308	SPRING, WIPER (ASSOC. # CO 240 035-0380 M.)
1	1	J-5315	WIPER - HOUSING, JIFFY TAP
FLG	QTY	PART NO	DESCRIPTION

A

LIMITS ON DIMENSIONS UNLESS OTHERWISE SPECIFIED		2-PL DECIMAL ± .01 3-PL DECIMAL ± .005 FRACTIONAL ± 1/64 ANGULAR ± 1/2°		 AAA PRODUCTS INTERNATIONAL 7114 Harry Hines Blvd Dallas, TX 75235
DRAWN: RMckenna	DATE: 10/6/2010	CHECKED: KWait	DATE: 1/29/2013	
SCALE: 1 : 1	SHEET: 1 OF 1	RELEASED: HWomack	DATE: 1/29/2013	
TITLE: WIPER ASSEMBLY, JIFFY TAP LEAD SCREWS			PART NO.: AY-5315	REV.:

2

