

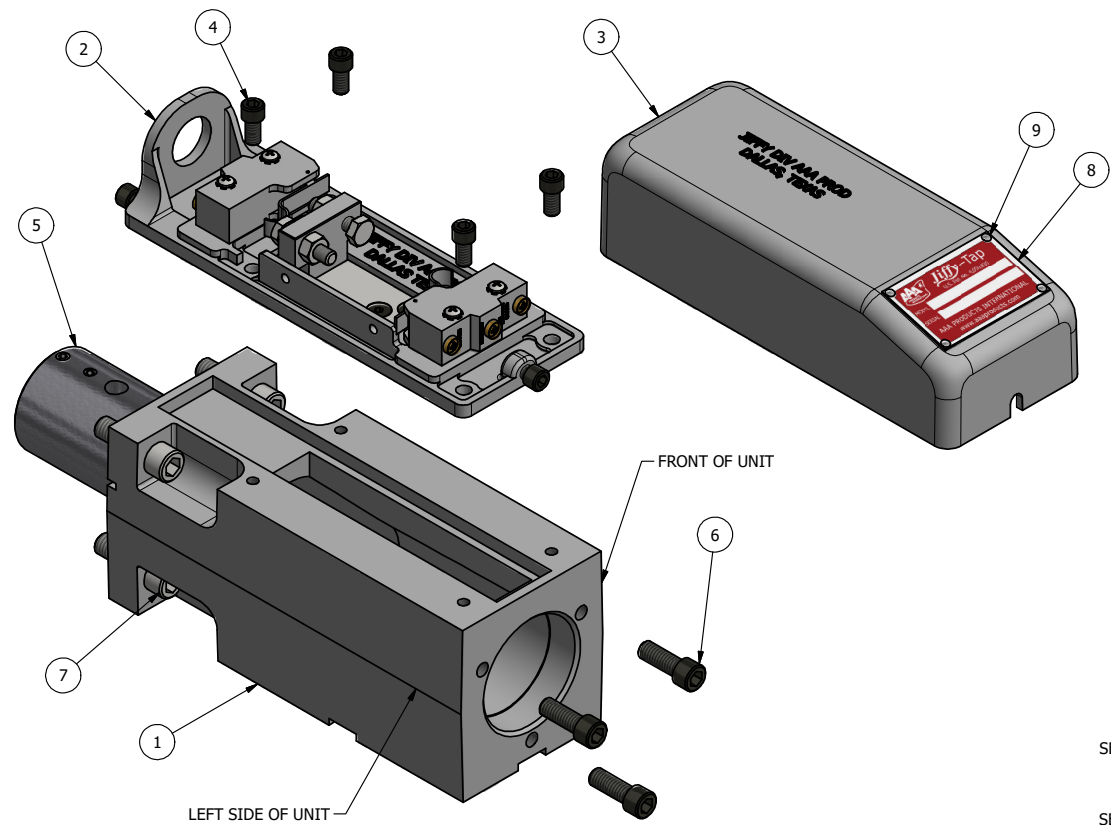
4

3

2

1

NOTES:
1) SEE ASSEMBLIES FOR INDIVIDUAL PARTS.



SEE NOTE 1 →

SEE NOTE 1 →

FLG	QTY	PART NO	DESCRIPTION	
	9	4	V-212	SCREW, 2 X 3/16, DRIVE, TYPE U, OVAL HEAD, 316 SS
	8	1	J-303	NAMEPLATE, MAIN UNIT
	7	4	J-283	SCREW, 3/8-16 X 1-1/4, SOCKET HEAD CAP
	6	3	J-284	SCREW, 5/16-18 X 7/8, SOCKET HEAD CAP
SEE NOTE 1 →	5	1	AY-5311	ASSY - SPINDLE SLEEVE, W/ SET SCREWS, JIFFY TAP
	4	4	J-292	SCREW, 1/4-20 X 1/2, SOCKET HEAD CAP
	3	1	J-5301	COVER - MICRO SWITCH PLATE, JIFFY TAP
SEE NOTE 1 →	2	1	AY-5302	SWITCH PLATE ASSEMBLY, STANDARD STROKE, JIFFY TAP
	1	1	J-5300	MACHINE - BODY, JIFFY TAP

LIMITS ON DIMENSIONS
UNLESS OTHERWISE SPECIFIED

2-PL DECIMAL ± .01
3-PL DECIMAL ± .005
FRACTIONAL ± 1/64
ANGULAR ± 1/2°



DRAWN: RMcKenna DATE: 6/24/2015 CHECKED: KWaitte DATE: 6/24/2015

SCALE: 1/2 SHEET: 1 OF 1 RELEASED: HWomack DATE: 6/24/2015

TITLE: **JIFFY TAP MAIN SECTION, COMBINE WITH DRIVE & SPINDLE**

DRAWING NO.: **3T**

REV.: DO NOT USE TO ORDER, ORDER BY PART NUMBERS LISTED IN TABLE

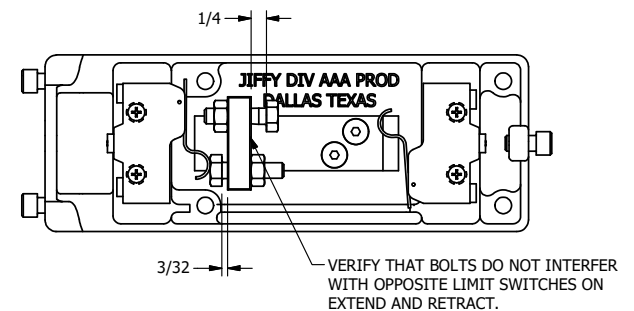
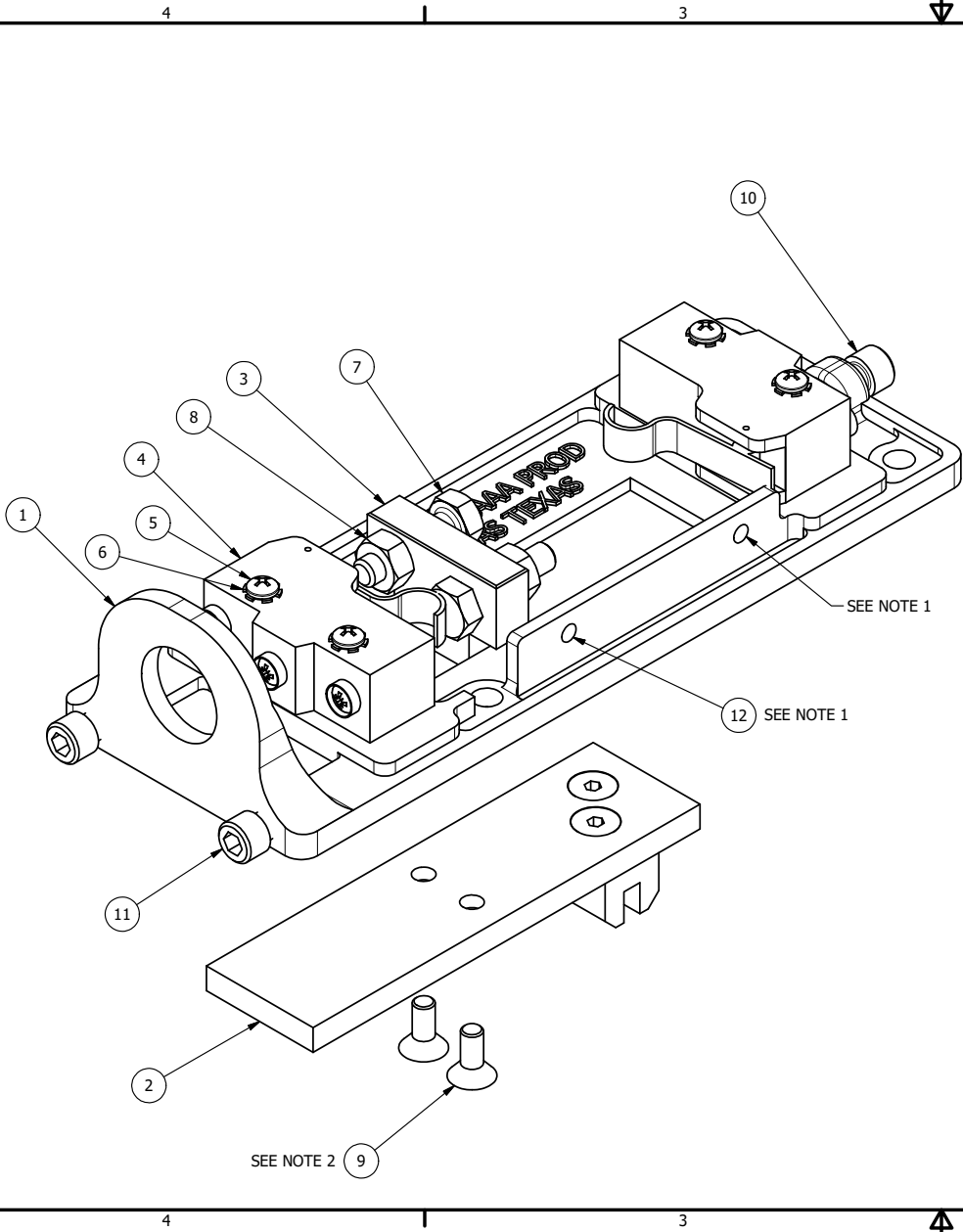
4

3

2

1

D:\Engineering\Inventor Files\Internal Drawings\Jiffy Tap Assy Web Only\31.tbl



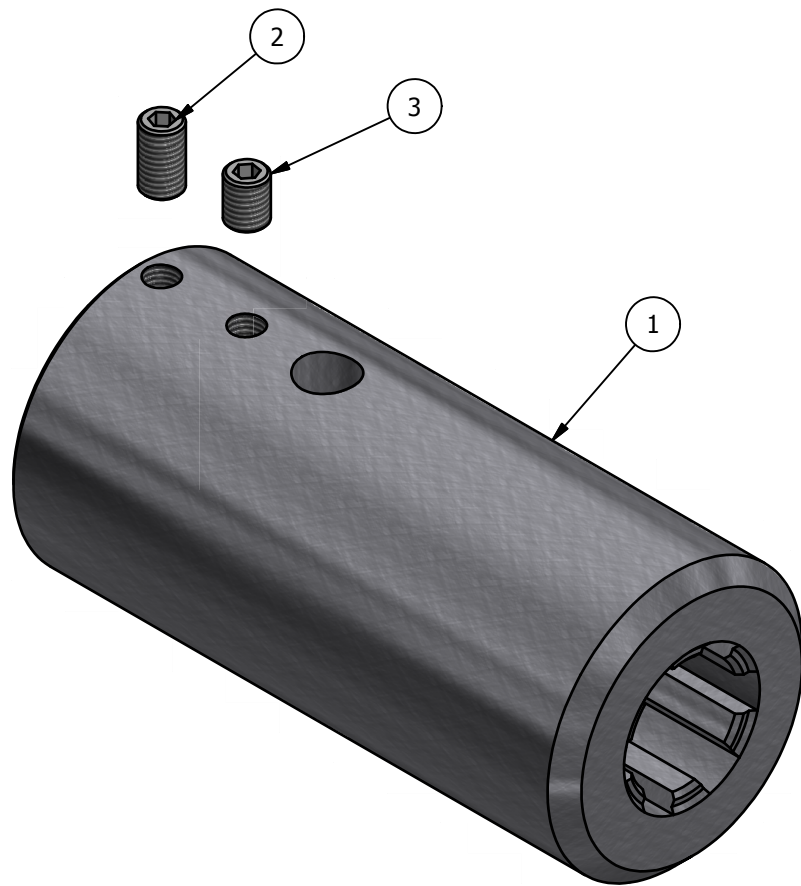
- NOTES:
 1) ATTACH J-305 TY-RAP LOOSELY. ENOUGH TO PREVENT LOSS OF TY-RAP DURING SHIPPING.
 2) USE LOCTITE #290 (GREEN) ON THREADS DURING ASSEMBLY.

FLG	QTY	PART NO	DESCRIPTION
12	2	J-305	TY-RAP, 1/8 X 4 (#TY-523M)
11	2	J-290	SCREW, SHCS (1/4-20 X 3/8)
10	1	J-292	SCREW, SHCS (1/4-20 X 1/2)
9	2	J-291	SCREW, FLAT HD ALLEN - NYLOK PELLET (10-24 X 1/2)
8	2	J-296	NUT, HEX (1/4-20). PLATED.
7	2	J-295	BOLT, HEX HD (1/4-20 X 1)
6	4	J-302	LOCKWASHER, #6 STAR
5	4	J-293	SCREW, PAN HEAD PHILLIPS (6-32 X 7/8). PLATED
4	2	J-282	SWITCH, LIMIT (BZ-2RW80147-A2)
3	1	J-5309	BLOCK - MICRO SW. ACTUATOR, JIFFY TAP
2	1	J-5312-13	SWITCH SLIDE BAR ASSY, JIFFY TAP
1	1	J-5302	PLATE - LIMIT SWITCH, JIFFY TAP

LIMITS ON DIMENSIONS UNLESS OTHERWISE SPECIFIED		2-PL DECIMAL ± .01 3-PL DECIMAL ± .005 FRACTIONAL ± 1/64 ANGULAR ± 1/2°		AAA PRODUCTS INTERNATIONAL 7114 Harry Hines Blvd Dallas, TX 75235
DRAWN: RHuffstetter	DATE: 10/7/2003	CHECKED: KWaite	DATE: 1/29/2013	
SCALE: 1 : 1	SHEET: 1 OF 1	RELEASED: HWomack	DATE: 1/29/2013	
TITLE: SWITCH PLATE ASSEMBLY, STANDARD STROKE, JIFFY TAP			PART NO.: AY-5302	REV.:

THE INFORMATION CONTAINED WITHIN THIS DOCUMENT IS PROPRIETARY TO AAA PRODUCTS AND MAY NOT BE DISCLOSED WITHOUT PRIOR WRITTEN CONSENT

P:\Engineering\Inventor Files\Internal Drawings\Jiffy Tap Assy\AY-5302.dwg



FLG	QTY	PART NO	DESCRIPTION
3	1	J-361	SCREW, WITH NYLOK PELLET, CUP POINT SET 1/4-28 X 5/16
2	1	J-405	SCREW, NYLOK KNURL POINT SET (1/4-28 X 7/16)
1	1	J-5311	SLEEVE SPINDLE, JIFFY TAP

LIMITS ON DIMENSIONS
UNLESS OTHERWISE SPECIFIED

2-PL DECIMAL $\pm .01$
3-PL DECIMAL $\pm .005$
FRACTIONAL $\pm 1/64$
ANGULAR $\pm 1/2^\circ$



AAA PRODUCTS INTERNATIONAL
7114 Harry Hines Blvd
Dallas, TX 75235

DRAWN: RMckenna	DATE: 10/9/2010	CHECKED: KWait	DATE: 1/29/2013
SCALE: 1 : 1	SHEET: 1 OF 1	RELEASED: HWomack	DATE: 1/29/2013
TITLE: ASSY - SPINDLE SLEEVE, W/ SET SCREWS, JIFFY TAP		PART NO.: AY-5311	REV.: