

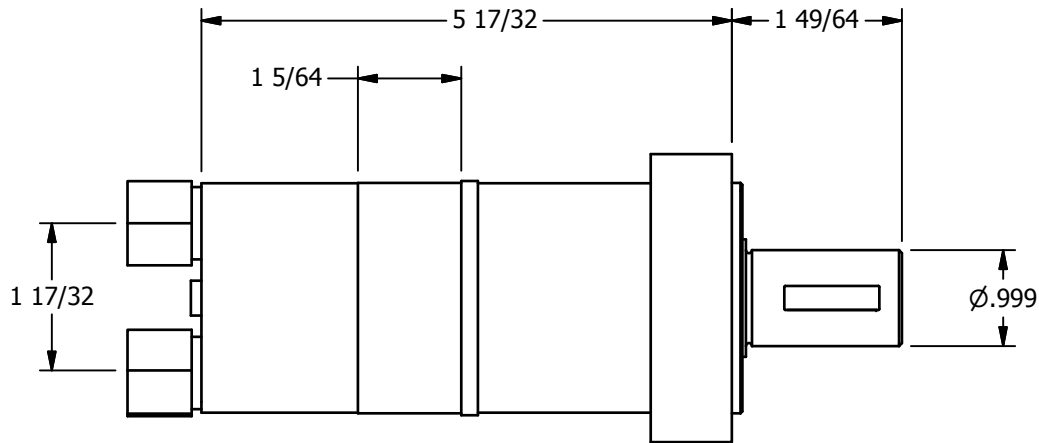
2

1

PORT A

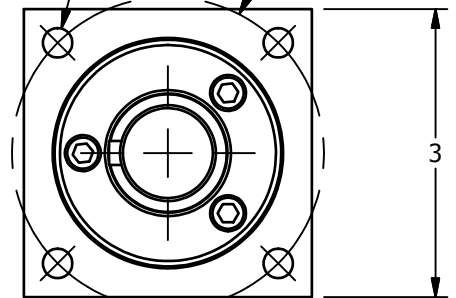
PORT B

1/2-14 NPTF PORTS
2-PLACES

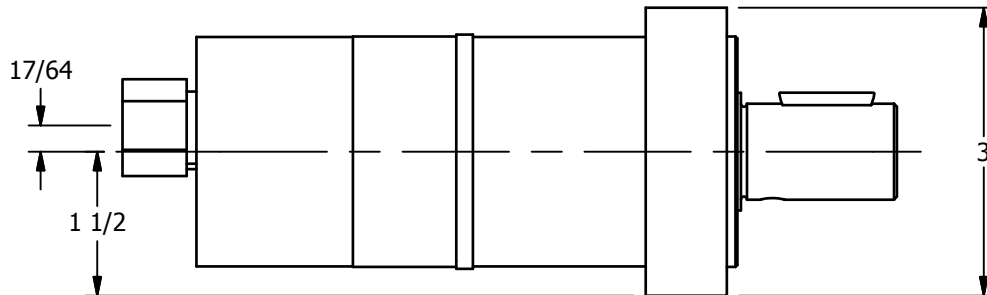


3/18-16 UNC
[.60 MAX BOLT DEPTH]
4-PLACES

Ø3.250 B.C.



PRESSURIZING PORT B WILL ROTATE THE
SHAFT COUNTER-CLOCKWISE.
(PRESSURIZE PORT A FOR CLOCKWISE)



**AAA PRODUCTS
INTERNATIONAL**
7114 Harry Hines Blvd
Dallas, TX 75235

TITLE: M-SERIES MOTOR ASSEMBLY,
1.93 CU. IN. PER REV.,
JIFFY TAP & DRILL

DRAWING NO.:
DIM_M-3

2

1