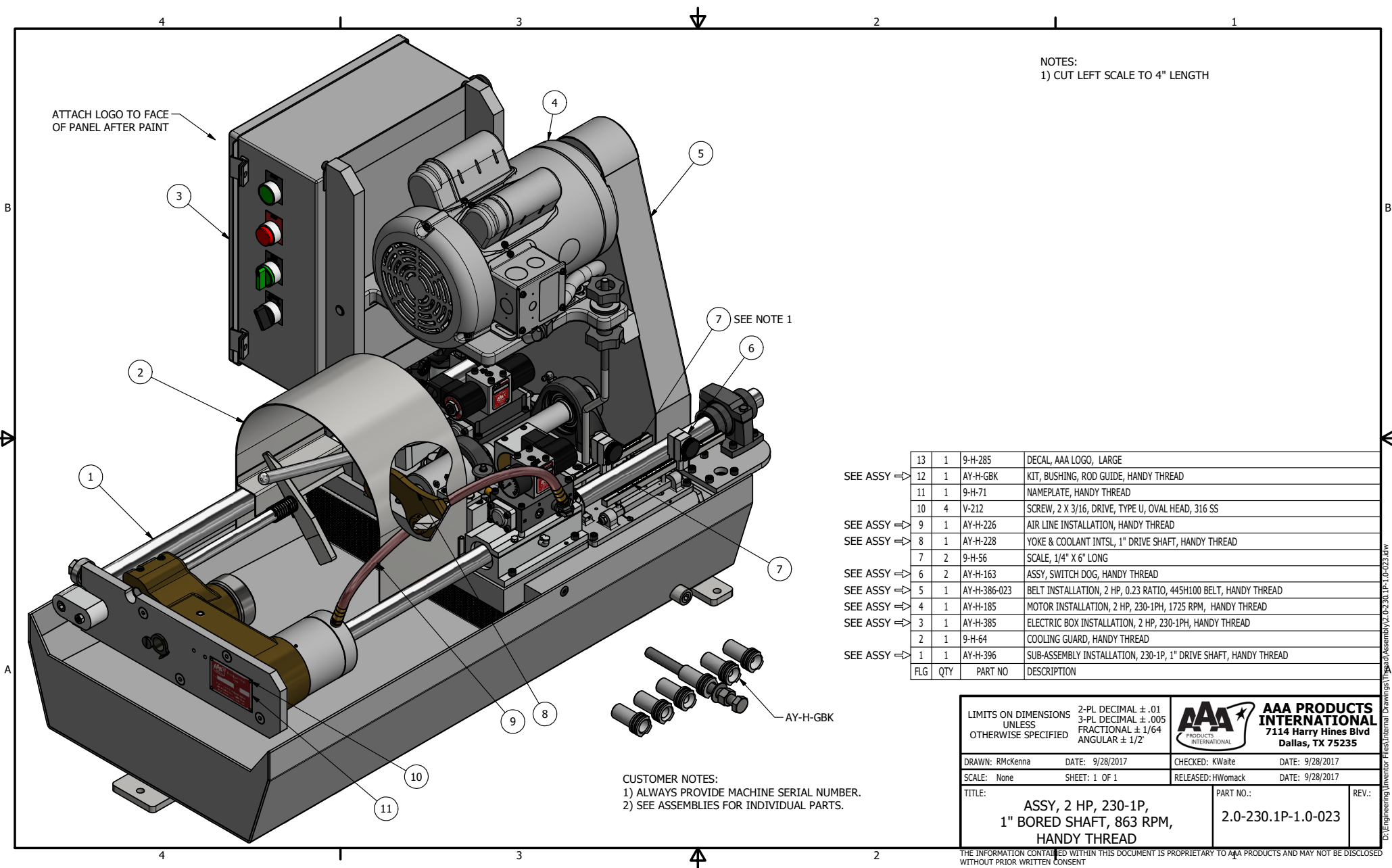


Handy Thread Parts

Associated Drawings

Specific parts may be customized and unique for each Handy-Thread manufactured. Machine serial numbers must be provided so ordered parts can be cross-referenced. Failure to provide a machine serial number may cause the incorrect ordering of parts and assemblies.

These drawings are for a generic machine using a pulley ratio of 0.23 which is approximately 400 rpm. Pulleys are changed to provide different machine rpms.



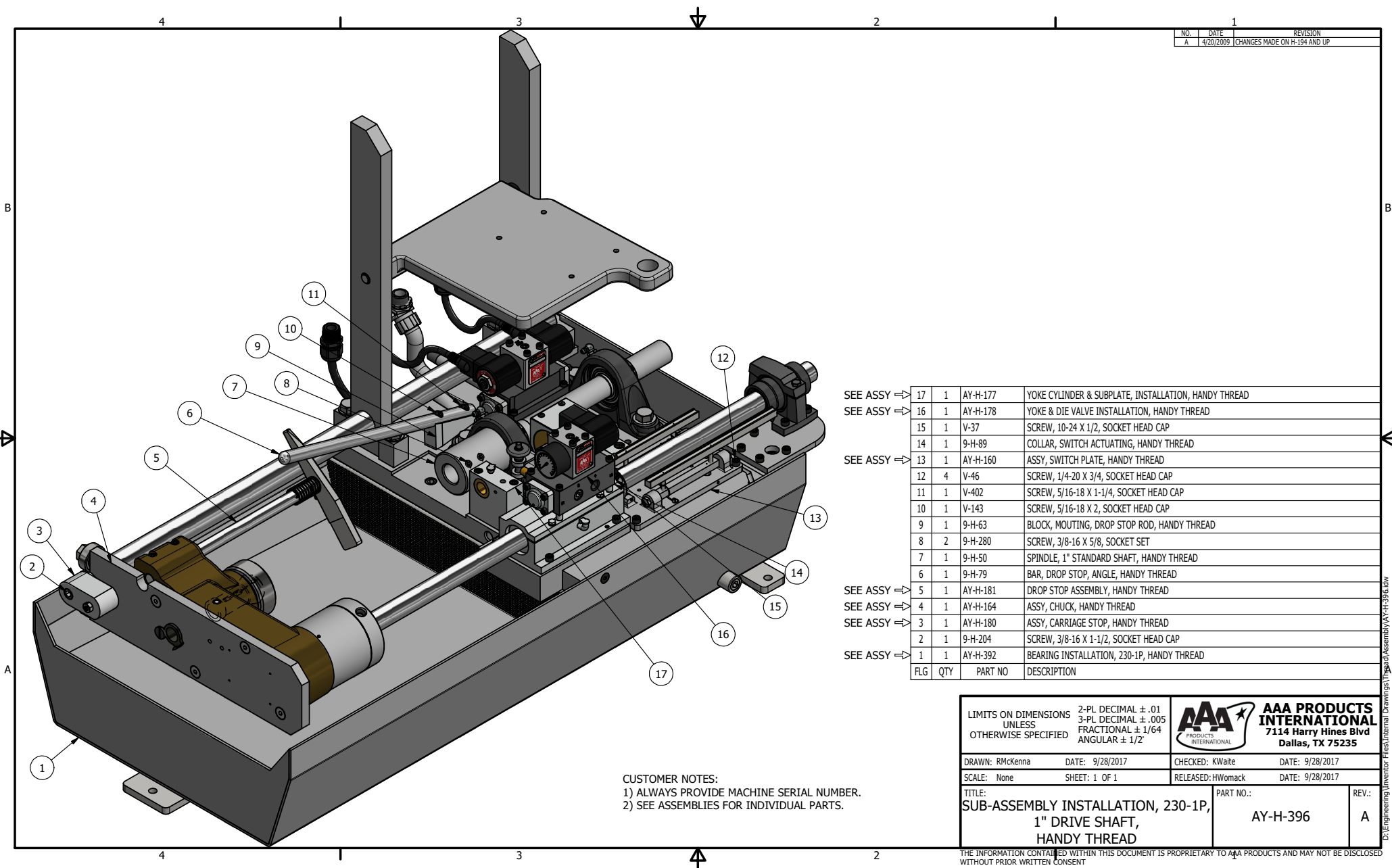
NOTES:
1) CUT LEFT SCALE TO 4" LENGTH

SEE ASSY ⇒	13	1	9-H-285	DECAL, AAA LOGO, LARGE
	12	1	AY-H-GBK	KIT, BUSHING, ROD GUIDE, HANDY THREAD
SEE ASSY ⇒	11	1	9-H-71	NAMEPLATE, HANDY THREAD
	10	4	V-212	SCREW, 2 X 3/16, DRIVE, TYPE U, OVAL HEAD, 316 SS
SEE ASSY ⇒	9	1	AY-H-226	AIR LINE INSTALLATION, HANDY THREAD
	8	1	AY-H-228	YOKE & COOLANT INTSL, 1" DRIVE SHAFT, HANDY THREAD
SEE ASSY ⇒	7	2	9-H-56	SCALE, 1/4" X 6" LONG
	6	2	AY-H-163	ASSY, SWITCH DOG, HANDY THREAD
SEE ASSY ⇒	5	1	AY-H-386-023	BELT INSTALLATION, 2 HP, 0.23 RATIO, 445H100 BELT, HANDY THREAD
	4	1	AY-H-185	MOTOR INSTALLATION, 2 HP, 230-1PH, 1725 RPM, HANDY THREAD
SEE ASSY ⇒	3	1	AY-H-385	ELECTRIC BOX INSTALLATION, 2 HP, 230-1PH, HANDY THREAD
	2	1	9-H-64	COOLING GUARD, HANDY THREAD
SEE ASSY ⇒	1	1	AY-H-396	SUB-ASSEMBLY INSTALLATION, 230-1P, 1" DRIVE SHAFT, HANDY THREAD
	FLG	QTY	PART NO	DESCRIPTION

CUSTOMER NOTES:
1) ALWAYS PROVIDE MACHINE SERIAL NUMBER.
2) SEE ASSEMBLIES FOR INDIVIDUAL PARTS.

LIMITS ON DIMENSIONS UNLESS OTHERWISE SPECIFIED		2-PL DECIMAL ± .01 3-PL DECIMAL ± .005 FRACTIONAL ± 1/64 ANGULAR ± 1/2°		AAA PRODUCTS INTERNATIONAL 7114 Harry Hines Blvd Dallas, TX 75235	
DRAWN: RMckenna	DATE: 9/28/2017	CHECKED: KWaitte	DATE: 9/28/2017		
SCALE: None	SHEET: 1 OF 1	RELEASED: HWomack	DATE: 9/28/2017		
TITLE: ASSY, 2 HP, 230-1P, 1" BORED SHAFT, 863 RPM, HANDY THREAD				PART NO.: 2.0-230.1P-1.0-023	REV.:

THE INFORMATION CONTAINED WITHIN THIS DOCUMENT IS PROPRIETARY TO AAA PRODUCTS AND MAY NOT BE DISCLOSED WITHOUT PRIOR WRITTEN CONSENT



NO.	DATE	REVISION
A	4/20/2009	CHANGES MADE ON H-194 AND UP

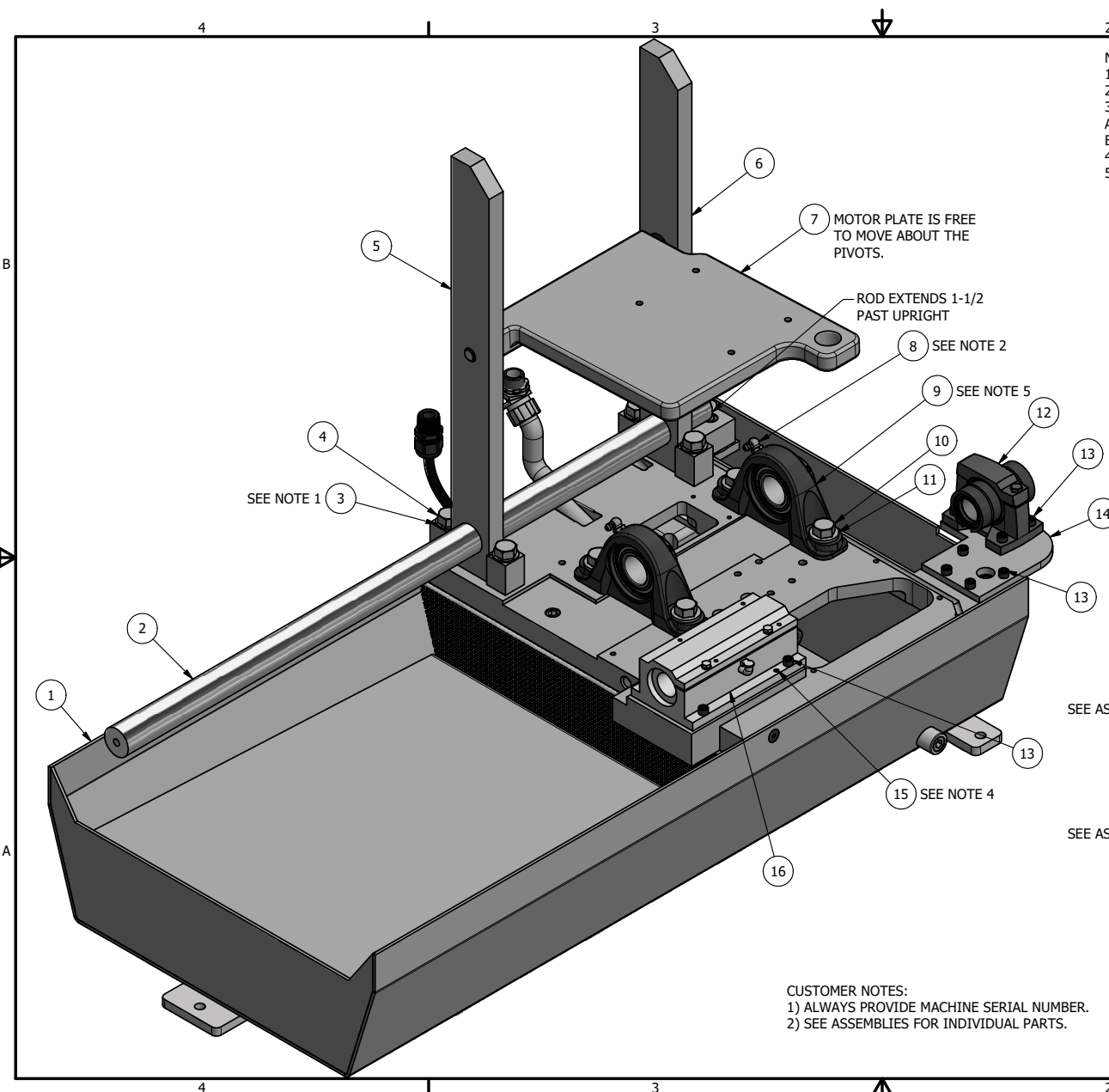
SEE ASSY ⇒	17	1	AY-H-177	YOKE CYLINDER & SUBPLATE, INSTALLATION, HANDY THREAD
SEE ASSY ⇒	16	1	AY-H-178	YOKE & DIE VALVE INSTALLATION, HANDY THREAD
	15	1	V-37	SCREW, 10-24 X 1/2, SOCKET HEAD CAP
	14	1	9-H-89	COLLAR, SWITCH ACTUATING, HANDY THREAD
SEE ASSY ⇒	13	1	AY-H-160	ASSY, SWITCH PLATE, HANDY THREAD
	12	4	V-46	SCREW, 1/4-20 X 3/4, SOCKET HEAD CAP
	11	1	V-402	SCREW, 5/16-18 X 1-1/4, SOCKET HEAD CAP
	10	1	V-143	SCREW, 5/16-18 X 2, SOCKET HEAD CAP
	9	1	9-H-63	BLOCK, MOUTING, DROP STOP ROD, HANDY THREAD
	8	2	9-H-280	SCREW, 3/8-16 X 5/8, SOCKET SET
	7	1	9-H-50	SPINDLE, 1" STANDARD SHAFT, HANDY THREAD
	6	1	9-H-79	BAR, DROP STOP, ANGLE, HANDY THREAD
SEE ASSY ⇒	5	1	AY-H-181	DROP STOP ASSEMBLY, HANDY THREAD
SEE ASSY ⇒	4	1	AY-H-164	ASSY, CHUCK, HANDY THREAD
SEE ASSY ⇒	3	1	AY-H-180	ASSY, CARRIAGE STOP, HANDY THREAD
	2	1	9-H-204	SCREW, 3/8-16 X 1-1/2, SOCKET HEAD CAP
SEE ASSY ⇒	1	1	AY-H-392	BEARING INSTALLATION, 230-1P, HANDY THREAD
FLG	QTY		PART NO	DESCRIPTION

CUSTOMER NOTES:
1) ALWAYS PROVIDE MACHINE SERIAL NUMBER.
2) SEE ASSEMBLIES FOR INDIVIDUAL PARTS.

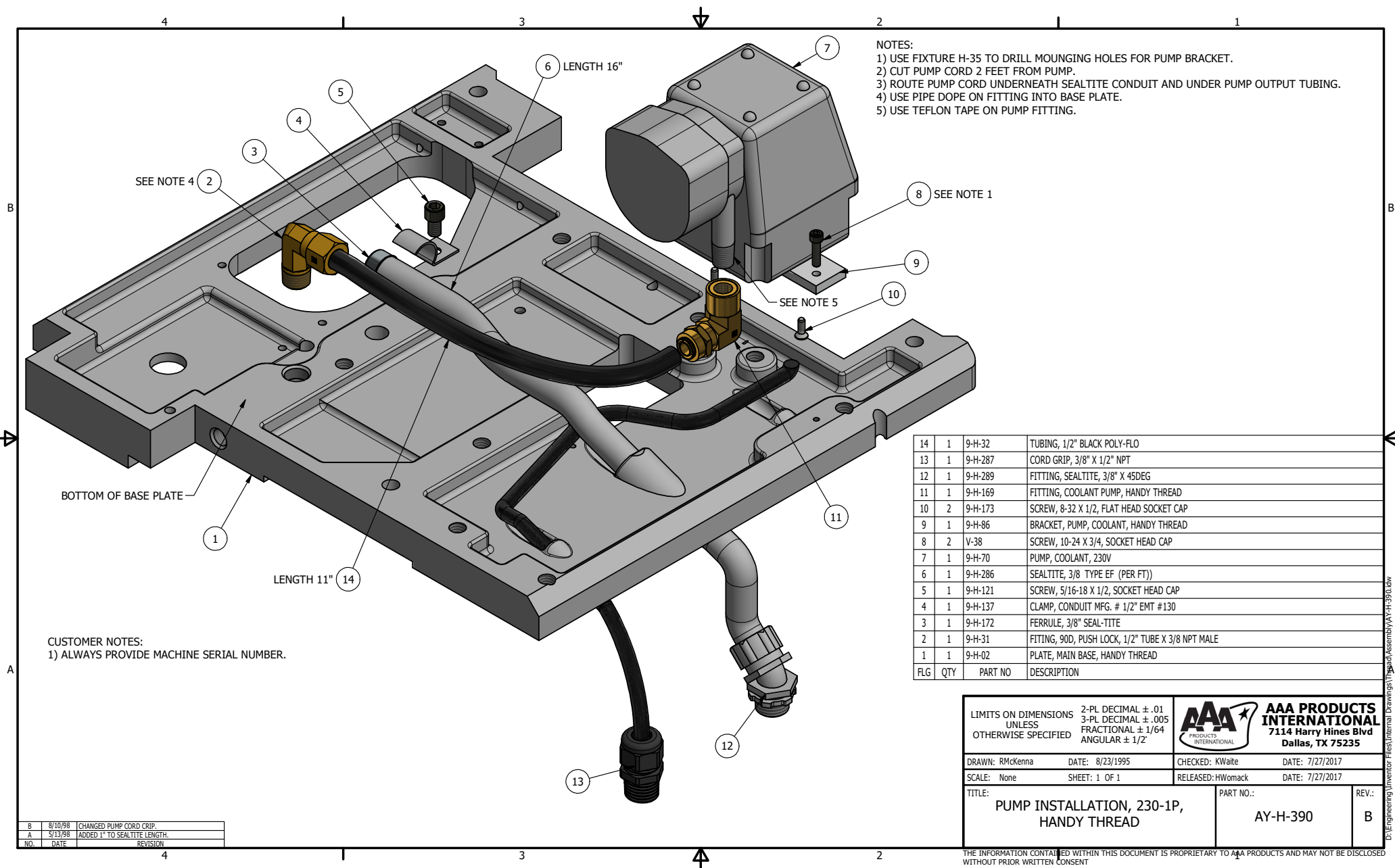
LIMITS ON DIMENSIONS UNLESS OTHERWISE SPECIFIED		2-PL DECIMAL ± .01 3-PL DECIMAL ± .005 FRACTIONAL ± 1/64 ANGULAR ± 1/2°		AAA PRODUCTS INTERNATIONAL 7114 Harry Hines Blvd Dallas, TX 75235	
DRAWN: RMckenna	DATE: 9/28/2017	CHECKED: KWaitte	DATE: 9/28/2017		
SCALE: None	SHEET: 1 OF 1	RELEASED: HWomack	DATE: 9/28/2017		
TITLE: SUB-ASSEMBLY INSTALLATION, 230-1P, 1" DRIVE SHAFT, HANDY THREAD				PART NO.: AY-H-396	REV.: A

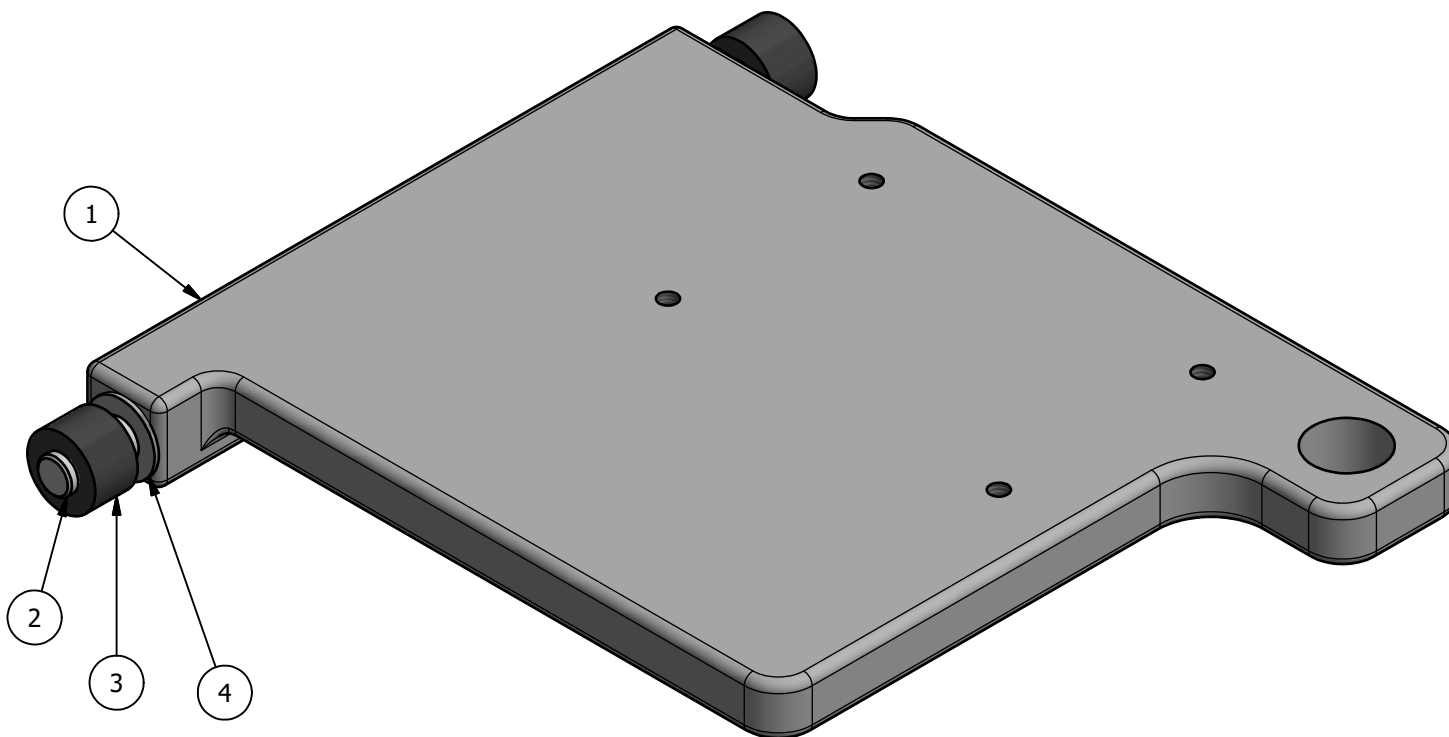
THE INFORMATION CONTAINED WITHIN THIS DOCUMENT IS PROPRIETARY TO AAA PRODUCTS AND MAY NOT BE DISCLOSED WITHOUT PRIOR WRITTEN CONSENT

D:\Engineering\Inventor Files\Internal Drawings\Head Assembly\AY-H-396.dwg



- NOTES:





4	2	9-H-38	WASHER, 1/2" SAE
3	2	9-H-26	BUSHING, RUBBER FOR MOTOR
2	2	9-H-115	PIN, 1/2 X 2-1/4 DOWEL
1	1	9-H-01	BASE - MOTOR MOUNT, HANDY THREAD
FLG	QTY	PART NO	DESCRIPTION

LIMITS ON DIMENSIONS
UNLESS
OTHERWISE SPECIFIED

2-PL DECIMAL $\pm .01$
3-PL DECIMAL $\pm .005$
FRACTIONAL $\pm 1/64$
ANGULAR $\pm 1/2^\circ$



**AAA PRODUCTS
INTERNATIONAL**
7114 Harry Hines Blvd
Dallas, TX 75235

DRAWN: RMckenna

DATE: 6/30/2017

CHECKED: KWait

DATE: 6/30/2017

SCALE: None

SHEET: 1 OF 1

RELEASED: HWomack

DATE: 6/30/2017

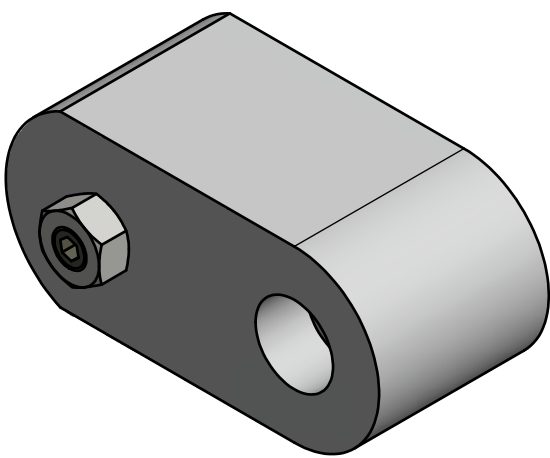
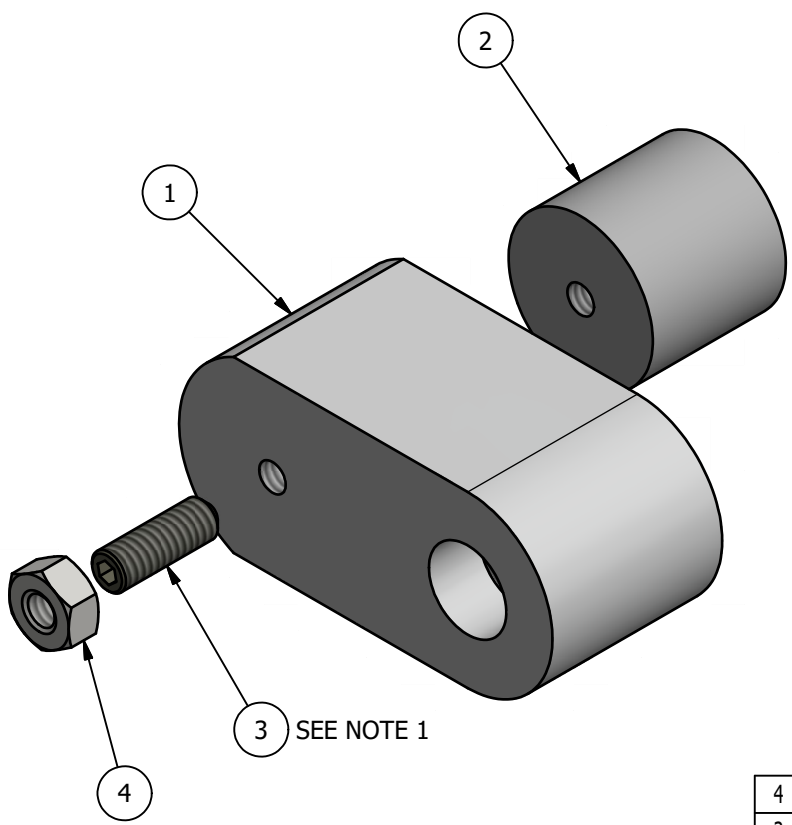
TITLE:

ASSEMBLY, MOTOR PLATE,
HANDY THREAD

PART NO.:


AY-H-368

REV.:

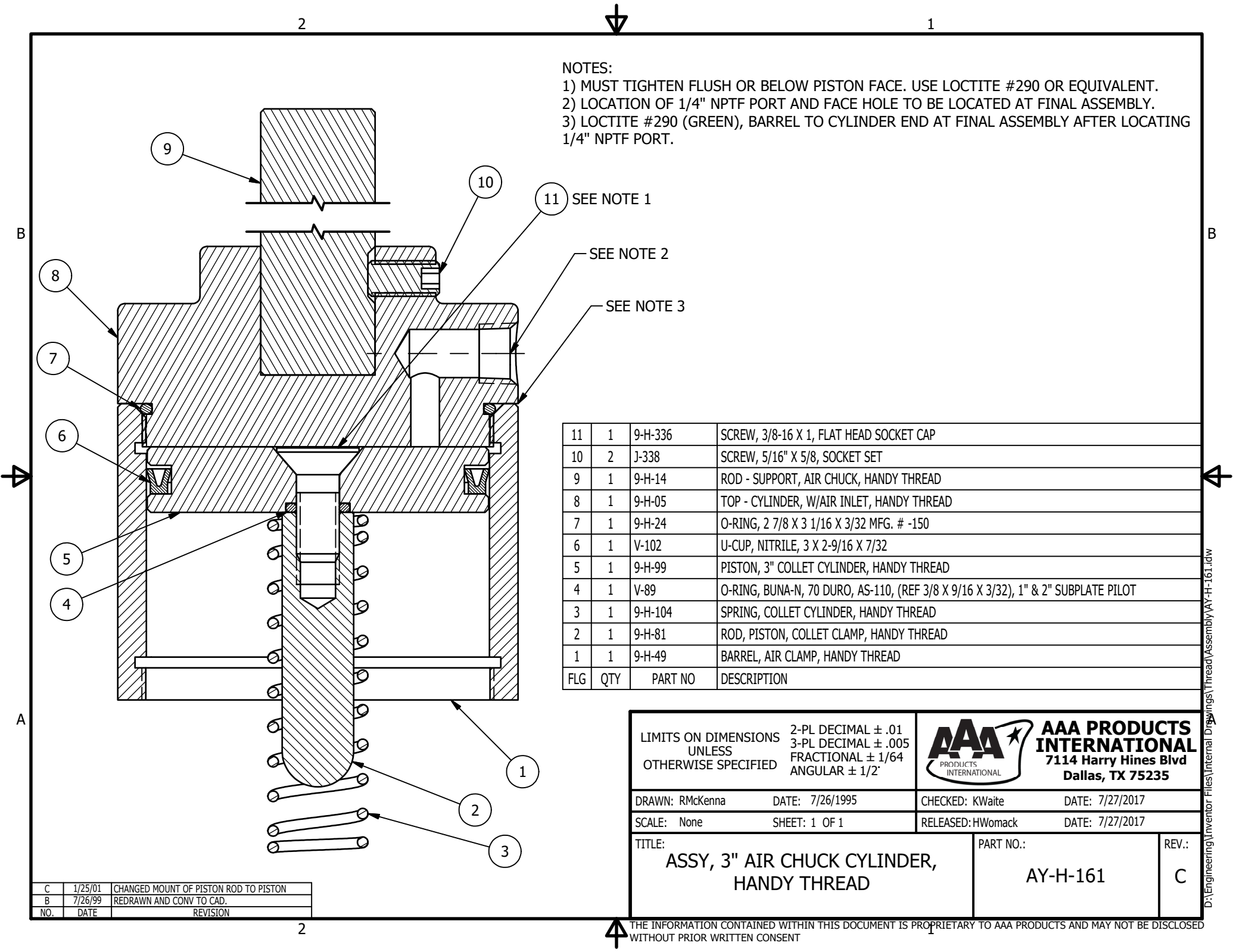


4	1	J-296	NUT, 1/4-20, HEX, PLATED
3	1	9-H-128	SCREW, 1/4-20 X 3/4, CUP POINT SOCKET SET
2	1	9-H-57	MAGNET, 1-1/16" X 1" ROUND, 18 LBS PULL FORCE
1	1	9-H-95	CARRIAGE STOP, HANDY THREAD
FLG	QTY	PART NO	DESCRIPTION

NOTES:
1) LOCTITE SCREW 1/2" REMAINING OUT OF MAGNET.

LIMITS ON DIMENSIONS UNLESS OTHERWISE SPECIFIED		2-PL DECIMAL ± .01 3-PL DECIMAL ± .005 FRACTIONAL ± 1/64 ANGULAR ± 1/2°	 AAA PRODUCTS INTERNATIONAL 7114 Harry Hines Blvd Dallas, TX 75235	
DRAWN: RMcKenna		DATE: 9/1/1995	CHECKED: KWait	DATE: 3/13/2017
SCALE: None		SHEET: 1 OF 1	RELEASED: HWomack	DATE: 3/13/2017
TITLE: ASSY, CARRIAGE STOP, HANDY THREAD			PART NO.: AY-H-180	REV.: A


A	7/1/98	REVISED NOTE 1
NO.	DATE	REVISION

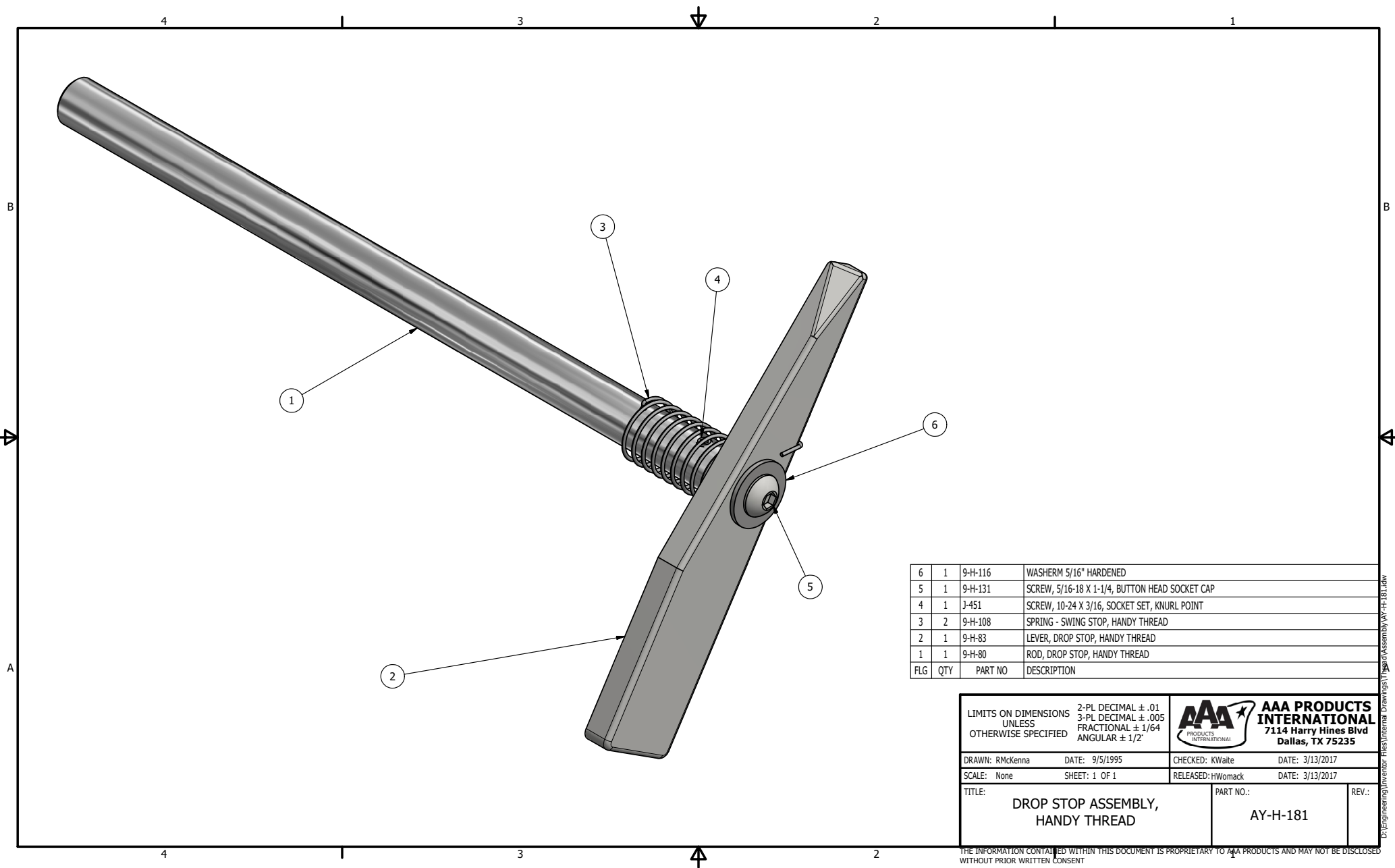


- NOTES:
- 1) MUST TIGHTEN FLUSH OR BELOW PISTON FACE. USE LOCTITE #290 OR EQUIVALENT.
 - 2) LOCATION OF 1/4" NPTF PORT AND FACE HOLE TO BE LOCATED AT FINAL ASSEMBLY.
 - 3) LOCTITE #290 (GREEN), BARREL TO CYLINDER END AT FINAL ASSEMBLY AFTER LOCATING 1/4" NPTF PORT.

11	1	9-H-336	SCREW, 3/8-16 X 1, FLAT HEAD SOCKET CAP
10	2	J-338	SCREW, 5/16" X 5/8, SOCKET SET
9	1	9-H-14	ROD - SUPPORT, AIR CHUCK, HANDY THREAD
8	1	9-H-05	TOP - CYLINDER, W/AIR INLET, HANDY THREAD
7	1	9-H-24	O-RING, 2 7/8 X 3 1/16 X 3/32 MFG. # -150
6	1	V-102	U-CUP, NITRILE, 3 X 2-9/16 X 7/32
5	1	9-H-99	PISTON, 3" COLLET CYLINDER, HANDY THREAD
4	1	V-89	O-RING, BUNA-N, 70 DURO, AS-110, (REF 3/8 X 9/16 X 3/32), 1" & 2" SUBPLATE PILOT
3	1	9-H-104	SPRING, COLLET CYLINDER, HANDY THREAD
2	1	9-H-81	ROD, PISTON, COLLET CLAMP, HANDY THREAD
1	1	9-H-49	BARREL, AIR CLAMP, HANDY THREAD
FLG	QTY	PART NO	DESCRIPTION

C	1/25/01	CHANGED MOUNT OF PISTON ROD TO PISTON
B	7/26/99	REDRAWN AND CONV TO CAD.
NO.	DATE	REVISION

LIMITS ON DIMENSIONS UNLESS OTHERWISE SPECIFIED		2-PL DECIMAL ± .01 3-PL DECIMAL ± .005 FRACTIONAL ± 1/64 ANGULAR ± 1/2'		 AAA PRODUCTS INTERNATIONAL 7114 Harry Hines Blvd Dallas, TX 75235	
DRAWN: RMcKenna		DATE: 7/26/1995		CHECKED: KWaitte	
SCALE: None		SHEET: 1 OF 1		RELEASED: HWomack	
TITLE: ASSY, 3" AIR CHUCK CYLINDER, HANDY THREAD				PART NO.: AY-H-161	
				REV.: C	

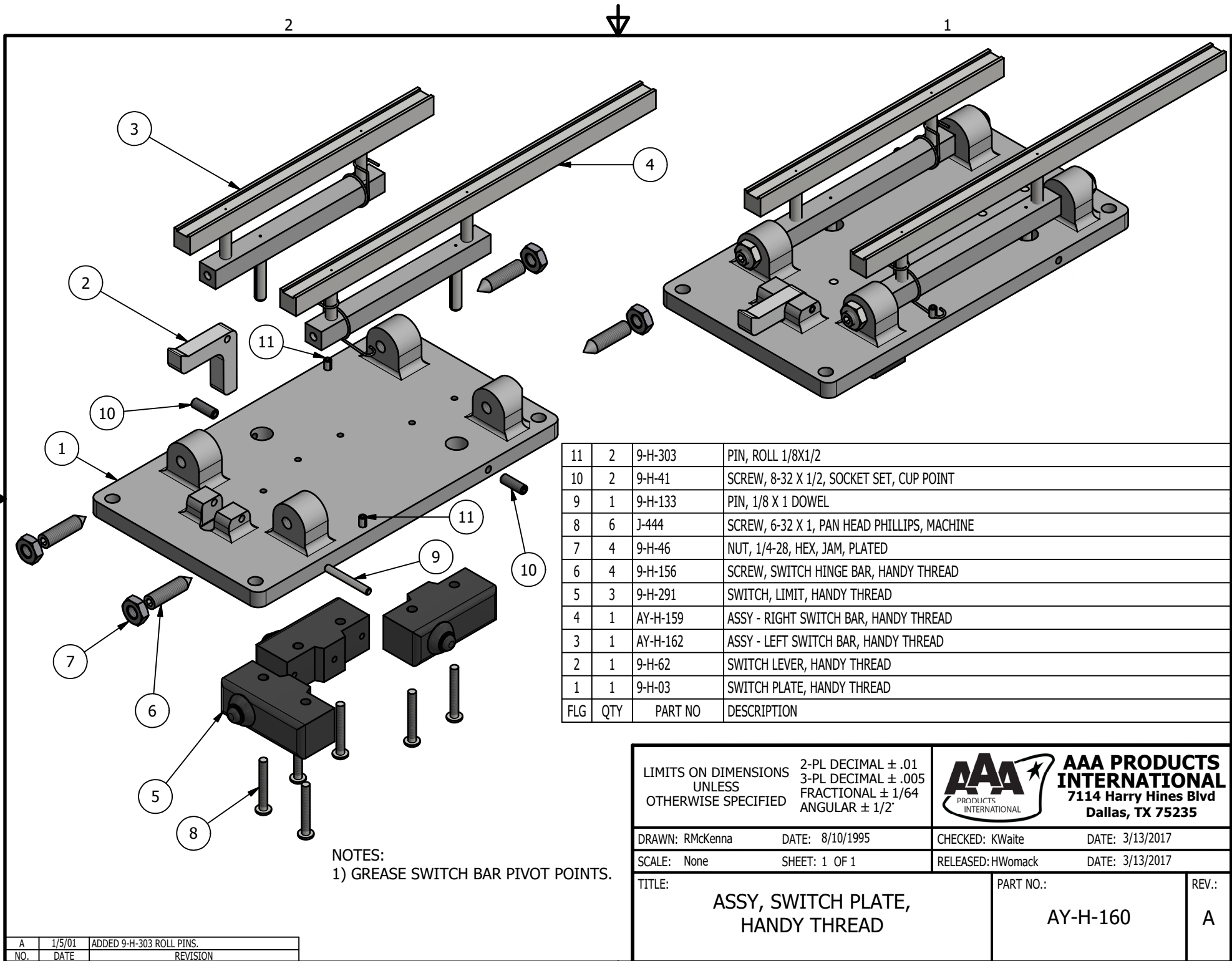


6	1	9-H-116	WASHER 5/16" HARDENED
5	1	9-H-131	SCREW, 5/16-18 X 1-1/4, BUTTON HEAD SOCKET CAP
4	1	J-451	SCREW, 10-24 X 3/16, SOCKET SET, KNURL POINT
3	2	9-H-108	SPRING - SWING STOP, HANDY THREAD
2	1	9-H-83	LEVER, DROP STOP, HANDY THREAD
1	1	9-H-80	ROD, DROP STOP, HANDY THREAD
FLG	QTY	PART NO	DESCRIPTION

LIMITS ON DIMENSIONS UNLESS OTHERWISE SPECIFIED		2-PL DECIMAL $\pm .01$ 3-PL DECIMAL $\pm .005$ FRACTIONAL $\pm 1/64$ ANGULAR $\pm 1/2^\circ$	AAA PRODUCTS INTERNATIONAL 7114 Harry Hines Blvd Dallas, TX 75235	
DRAWN: RMckenna	DATE: 9/5/1995	CHECKED: KWaite	DATE: 3/13/2017	
SCALE: None	SHEET: 1 OF 1	RELEASED: HWomack	DATE: 3/13/2017	
TITLE: DROP STOP ASSEMBLY, HANDY THREAD			PART NO.: AY-H-181	REV.:


THE INFORMATION CONTAINED WITHIN THIS DOCUMENT IS PROPRIETARY TO AAA PRODUCTS AND MAY NOT BE DISCLOSED WITHOUT PRIOR WRITTEN CONSENT

D:\Engineering\Inventory Files\Internal Drawings\1\Head Assembly\AY-H-181.dwg

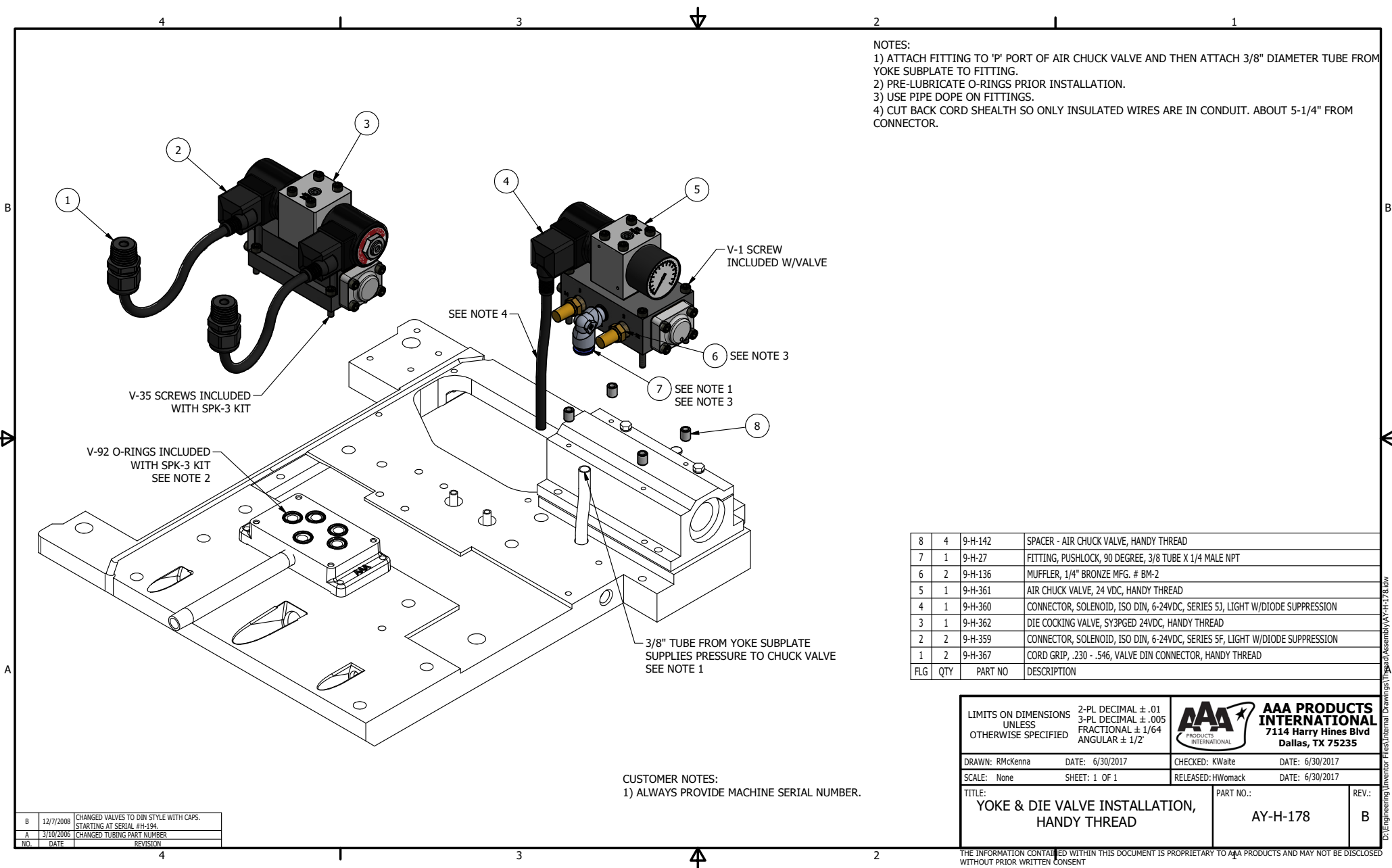


11	2	9-H-303	PIN, ROLL 1/8X1/2
10	2	9-H-41	SCREW, 8-32 X 1/2, SOCKET SET, CUP POINT
9	1	9-H-133	PIN, 1/8 X 1 DOWEL
8	6	J-444	SCREW, 6-32 X 1, PAN HEAD PHILLIPS, MACHINE
7	4	9-H-46	NUT, 1/4-28, HEX, JAM, PLATED
6	4	9-H-156	SCREW, SWITCH HINGE BAR, HANDY THREAD
5	3	9-H-291	SWITCH, LIMIT, HANDY THREAD
4	1	AY-H-159	ASSY - RIGHT SWITCH BAR, HANDY THREAD
3	1	AY-H-162	ASSY - LEFT SWITCH BAR, HANDY THREAD
2	1	9-H-62	SWITCH LEVER, HANDY THREAD
1	1	9-H-03	SWITCH PLATE, HANDY THREAD
FLG	QTY	PART NO	DESCRIPTION

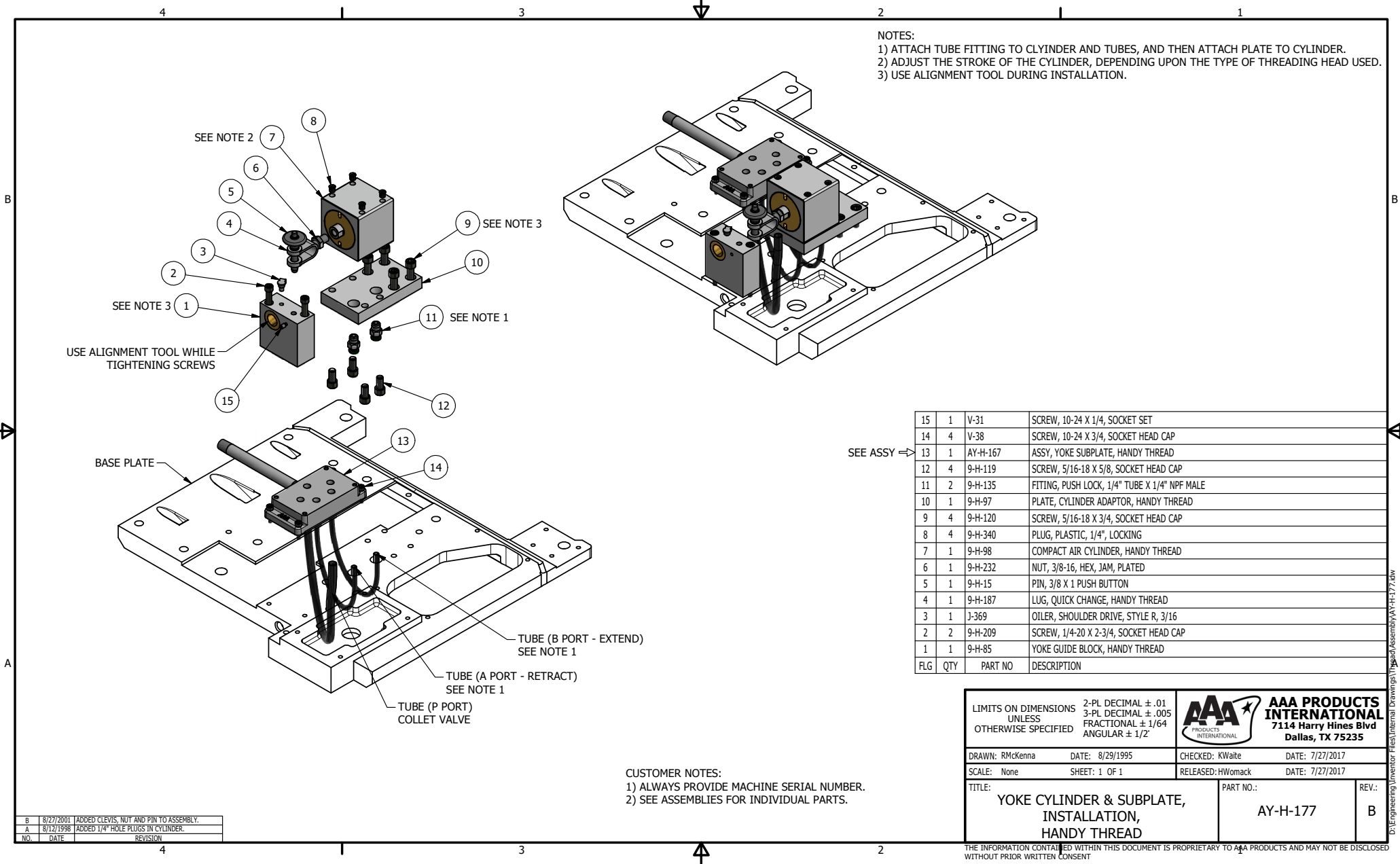
NOTES:
1) GREASE SWITCH BAR PIVOT POINTS.

LIMITS ON DIMENSIONS UNLESS OTHERWISE SPECIFIED		2-PL DECIMAL ± .01 3-PL DECIMAL ± .005 FRACTIONAL ± 1/64 ANGULAR ± 1/2°		 AAA PRODUCTS INTERNATIONAL 7114 Harry Hines Blvd Dallas, TX 75235	
DRAWN: RMcKenna		DATE: 8/10/1995		CHECKED: KWaitte	
SCALE: None		SHEET: 1 OF 1		RELEASED: HWomack	
TITLE: ASSY, SWITCH PLATE, HANDY THREAD				PART NO.: AY-H-160	
				REV.: A	

A	1/5/01	ADDED 9-H-303 ROLL PINS.
NO.	DATE	REVISION



THE INFORMATION CONTAINED WITHIN THIS DOCUMENT IS PROPRIETARY TO AAA PRODUCTS AND MAY NOT BE DISCLOSED WITHOUT PRIOR WRITTEN CONSENT



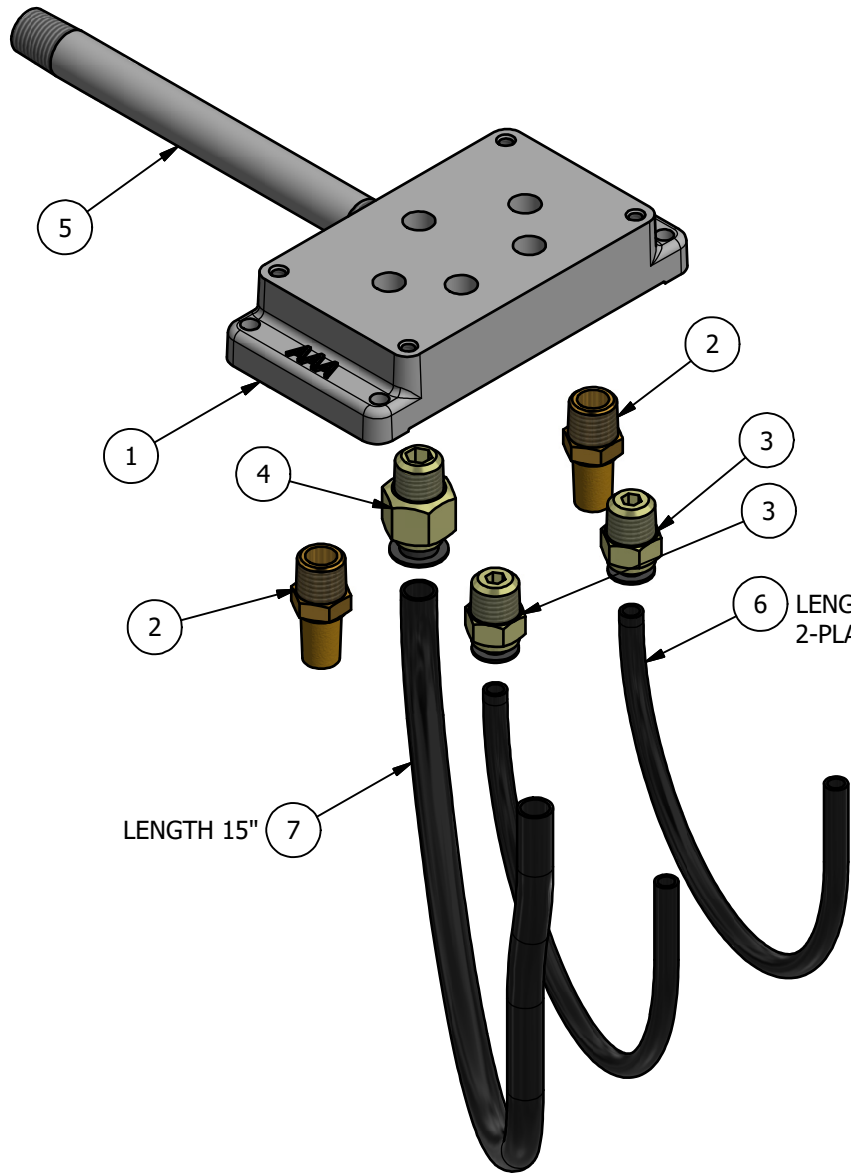
NOTES:
1) ATTACH TUBE FITTING TO CYLINDER AND TUBES, AND THEN ATTACH PLATE TO CYLINDER.
2) ADJUST THE STROKE OF THE CYLINDER, DEPENDING UPON THE TYPE OF THREADING HEAD USED.
3) USE ALIGNMENT TOOL DURING INSTALLATION.

15	1	V-31	SCREW, 10-24 X 1/4, SOCKET SET
14	4	V-38	SCREW, 10-24 X 3/4, SOCKET HEAD CAP
13	1	AY-H-167	ASSY, YOKE SUBPLATE, HANDY THREAD
12	4	9-H-119	SCREW, 5/16-18 X 5/8, SOCKET HEAD CAP
11	2	9-H-135	FITTING, PUSH LOCK, 1/4" TUBE X 1/4" NPF MALE
10	1	9-H-97	PLATE, CYLINDER ADAPTOR, HANDY THREAD
9	4	9-H-120	SCREW, 5/16-18 X 3/4, SOCKET HEAD CAP
8	4	9-H-340	PLUG, PLASTIC, 1/4", LOCKING
7	1	9-H-98	COMPACT AIR CYLINDER, HANDY THREAD
6	1	9-H-232	NUT, 3/8-16, HEX, JAM, PLATED
5	1	9-H-15	PIN, 3/8 X 1 PUSH BUTTON
4	1	9-H-187	LUG, QUICK CHANGE, HANDY THREAD
3	1	J-369	OILER, SHOULDER DRIVE, STYLE R, 3/16
2	2	9-H-209	SCREW, 1/4-20 X 2-3/4, SOCKET HEAD CAP
1	1	9-H-85	YOKE GUIDE BLOCK, HANDY THREAD
FLG	QTY	PART NO	DESCRIPTION

LIMITS ON DIMENSIONS UNLESS OTHERWISE SPECIFIED		2-PL DECIMAL ± .01 3-PL DECIMAL ± .005 FRACTIONAL ± 1/64 ANGULAR ± 1/2°	 AAA PRODUCTS INTERNATIONAL 7114 Harry Hines Blvd Dallas, TX 75235	
DRAWN: RMckenna	DATE: 8/29/1995	CHECKED: KWaitte		DATE: 7/27/2017
SCALE: None	SHEET: 1 OF 1	RELEASED: HWomack	DATE: 7/27/2017	
TITLE: YOKE CYLINDER & SUBPLATE, INSTALLATION, HANDY THREAD			PART NO.: AY-H-177	REV.: B


CUSTOMER NOTES:
1) ALWAYS PROVIDE MACHINE SERIAL NUMBER.
2) SEE ASSEMBLIES FOR INDIVIDUAL PARTS.

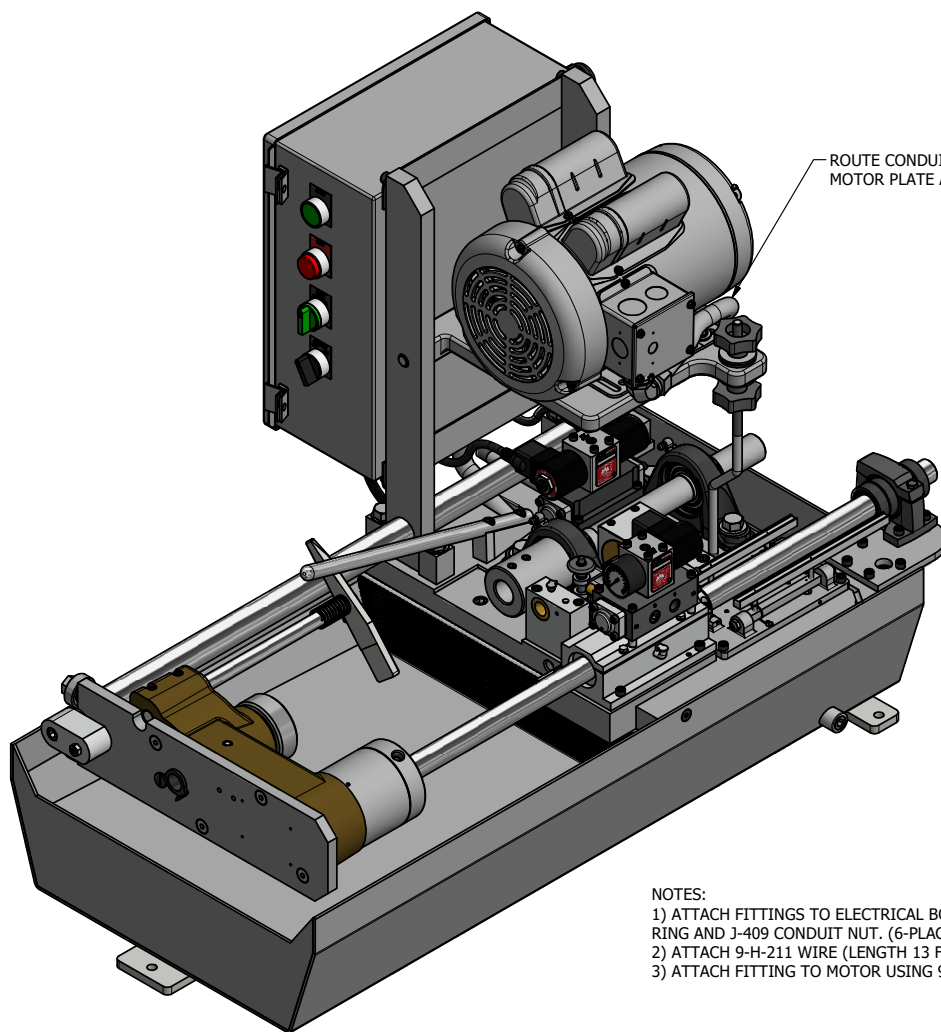
B	8/27/2001	ADDED CLEVIS, NUT AND PIN TO ASSEMBLY.
A	8/12/1998	ADDED 1/4" HOLE PLUGS IN CYLINDER.
NO.	DATE	REVISION



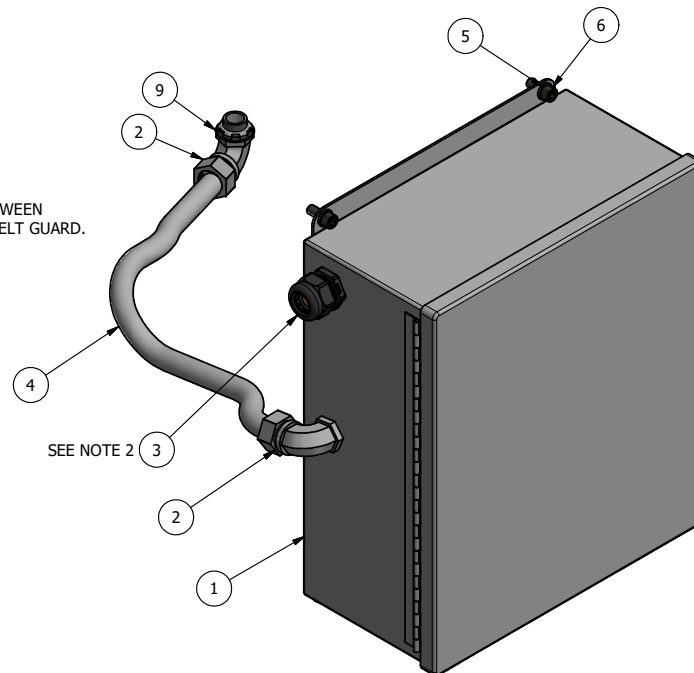
NOTES:
1) USE PIPE DOPE DURING INSTALLATION OF FITTINGS AND NIPPLE.

7	1	9-H-33	TUBING, 3\8" BLACK POLY-FLO
6	2	9-H-34	TUBING, 1\4" BLACK POLY-FLO
5	1	9-H-199	NIPPLE, 1\4" X 5-1\2" PLATED
4	1	9-H-28	FITTING, 3\8" PUSH LOCK TUBE X 1\4" MALE NPT
3	2	9-H-29	FITTING, 1\4" PUSH LOCK TUBE X 1\4" MALE NPT
2	2	9-H-136	MUFFLER, 1\4" BRONZE MFG. # BM-2
1	1	9-H-171	MODIFIED SUBPLATE SP2-1N, HANDY THREAD
FLG	QTY	PART NO	DESCRIPTION

LIMITS ON DIMENSIONS UNLESS OTHERWISE SPECIFIED		2-PL DECIMAL ± .01 3-PL DECIMAL ± .005 FRACTIONAL ± 1/64 ANGULAR ± 1/2°		 AAA PRODUCTS INTERNATIONAL 7114 Harry Hines Blvd Dallas, TX 75235	
DRAWN: RMcKenna		DATE: 8/15/1995		CHECKED: KWait	
SCALE: None		SHEET: 1 OF 1		RELEASED: HWomack	
DATE: 3/13/2017		DATE: 3/13/2017		DATE: 3/13/2017	
TITLE: <div>ASSY, YOKE SUBPLATE, HANDY THREAD</div>				PART NO.: <div>AY-H-167</div>	REV.: <div></div>



ROUTE CONDUIT BETWEEN
MOTOR PLATE AND BELT GUARD.



SEE NOTE 2

SEE ASSY →

NOTES:

- 1) ATTACH FITTINGS TO ELECTRICAL BOX USING 9-H-290 SEALING RING AND J-409 CONDUIT NUT. (6-PLACES)
- 2) ATTACH 9-H-211 WIRE (LENGTH 13 FEET) AND CORD PLUG.
- 3) ATTACH FITTING TO MOTOR USING 9-H-290 SEALING RING.

CUSTOMER NOTES:

- 1) ALWAYS PROVIDE MACHINE SERIAL NUMBER.
- 2) SEE ASSEMBLIES FOR INDIVIDUAL PARTS.

10	7	J-409	NUT, 1/2" CONDUIT #141 T & B
9	7	9-H-290	RING, APPLETON SEALING
8	1	9-H-211	WIRE, 12-3 SOOW BLACK (13 FT.)
7	1	9-H-114	PLUG, LINE CORD FOR 1-1/2 HP MACHINE
6	4	9-H-120	SCREW, 5/16-18 X 3/4, SOCKET HEAD CAP
5	4	9-H-322	WASHER, LOCK 5/16" ZINC PLATED.
4	1	9-H-286	SEALTITE, 3/8 TYPE EF (PER FT)
3	1	9-H-369	CORD GRIP, .450 - .709, POWER CORD, HANDY THREAD
2	2	9-H-288	FITTING, SEALTITE, 3/8" X 90DEG
1	1	AY-H-383	BOX, ELECTRIC, STANDARD, 2 HP, 230-1PH, HANDY THREAD
FLG	QTY	PART NO	DESCRIPTION

LIMITS ON DIMENSIONS
UNLESS
OTHERWISE SPECIFIED

2-PL DECIMAL ± .01
3-PL DECIMAL ± .005
FRACTIONAL ± 1/64
ANGULAR ± 1/2°



**AAA PRODUCTS
INTERNATIONAL**
7114 Harry Hines Blvd
Dallas, TX 75235

DRAWN: RMckenna DATE: 9/13/2017

CHECKED: KWalte DATE: 9/13/2017

SCALE: None SHEET: 1 OF 1

RELEASED: HWomack DATE: 9/13/2017

TITLE:
**ELECTRIC BOX INSTALLATION,
2 HP, 230-1PH,
HANDY THREAD**

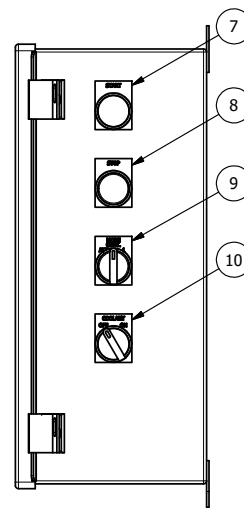
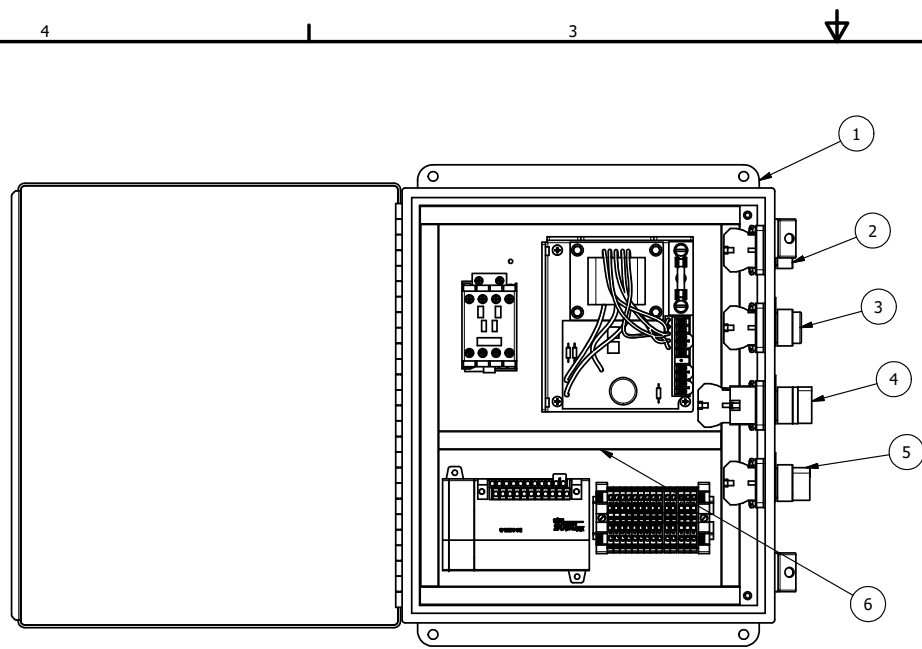
PART NO.:
AY-H-385

REV.:
A

A	NO.	DATE	CHANGED MOTOR CORD GRIP.	REVISION

THE INFORMATION CONTAINED WITHIN THIS DOCUMENT IS PROPRIETARY TO AAA PRODUCTS AND MAY NOT BE DISCLOSED WITHOUT PRIOR WRITTEN CONSENT

D:\Engineering\Inventory Files\Internal Drawings\Lead Assembly\AY-H-385.dwg



SEE ASSY ⇨

10	1	9-H-267	LEGEND PLATE, COOLANT, HANDY THREAD
9	1	9-H-268	LEGEND PLATE, MODE, HANDY THREAD
8	1	9-H-269	LEGEND PLATE, STOP, HANDY THREAD
7	1	9-H-270	LEGEND PLATE, START, HANDY THREAD
6	1	AY-H-353	PANEL, ELECTRICAL, 2 HP, 230V-1PH, HANDY THREAD
5	1	9-H-259	SWITCH, COOLANT 2-POSITION SELECTOR
4	1	9-H-348	SWITCH, 2 POSITION LIGHT SELECTOR WITH LED BULB
3	1	9-H-261	SWITCH, RED STOP W/ N.C. CONTACT
2	1	9-H-262	SWITCH, GREEN START BUTTON
1	1	9-H-248	ENCLOSURE, ELECTRICAL, HANDY THREAD
FLG	QTY	PART NO	DESCRIPTION

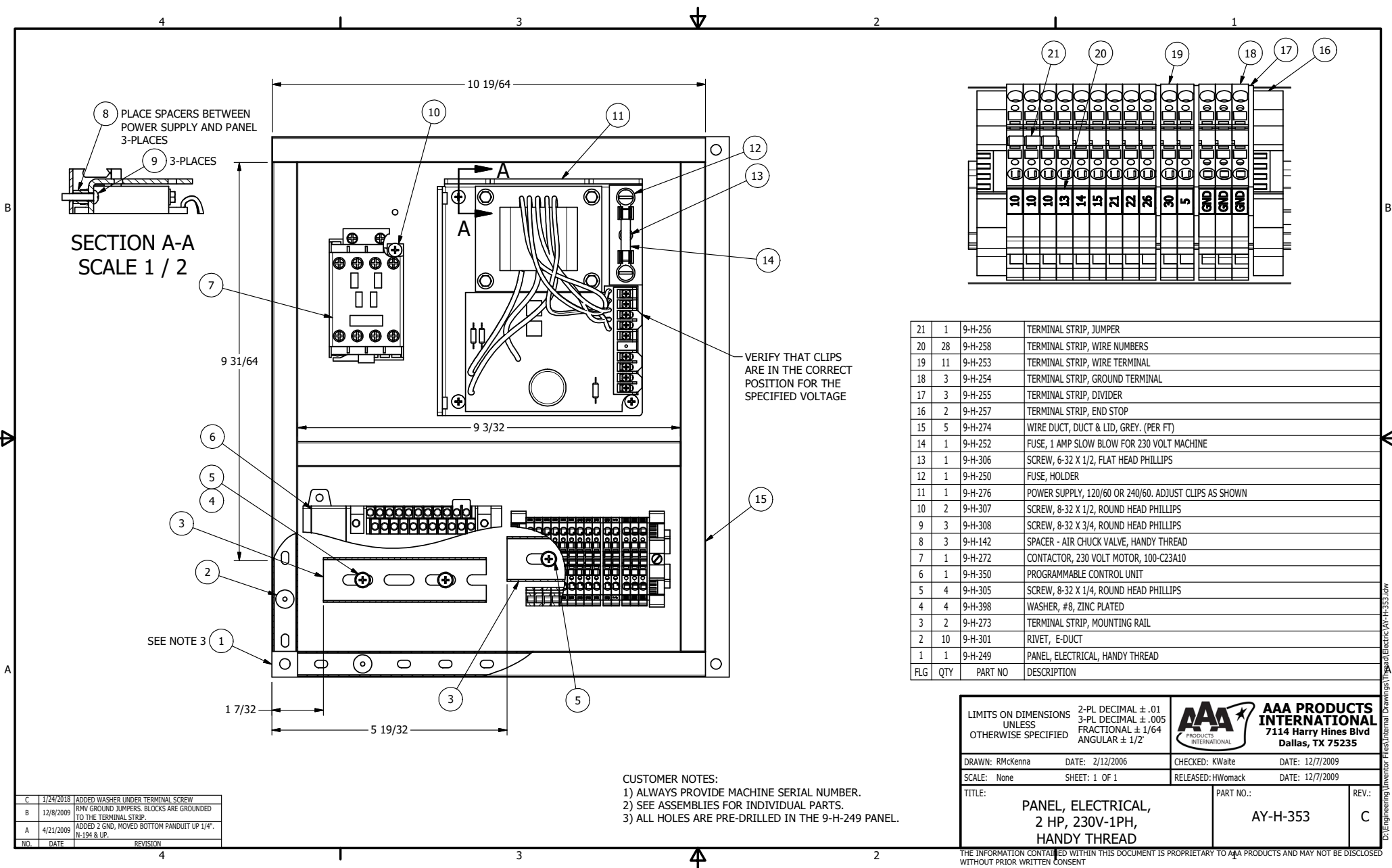
F	7/12/2017	ADDED 9-H-182 TO ASSEMBLY, CHNGD TITLE.
E	10/18/2006	MADE SWITCHES AS SINGLE ASSEMBLIES. CHANGED TO AUTOMATION DIRECT. H-192 & UP.
D	3/13/2006	RMVD PANEL DETAIL, CREATED STD BOX
C	11/30/2001	CHNG MODE FRM 3 POS, RMVD CONT
B	5/31/2000	ADDED 230VAC-3PH NOTE, UPD DRW # 1N NOTES
A	7/1/1998	RMV AUX CONTACT, MODIFIED SWITCH SPACING
NO.	DATE	REVISION

CUSTOMER NOTES:
1) ALWAYS PROVIDE MACHINE SERIAL NUMBER.
2) SEE ASSEMBLIES FOR INDIVIDUAL PARTS.

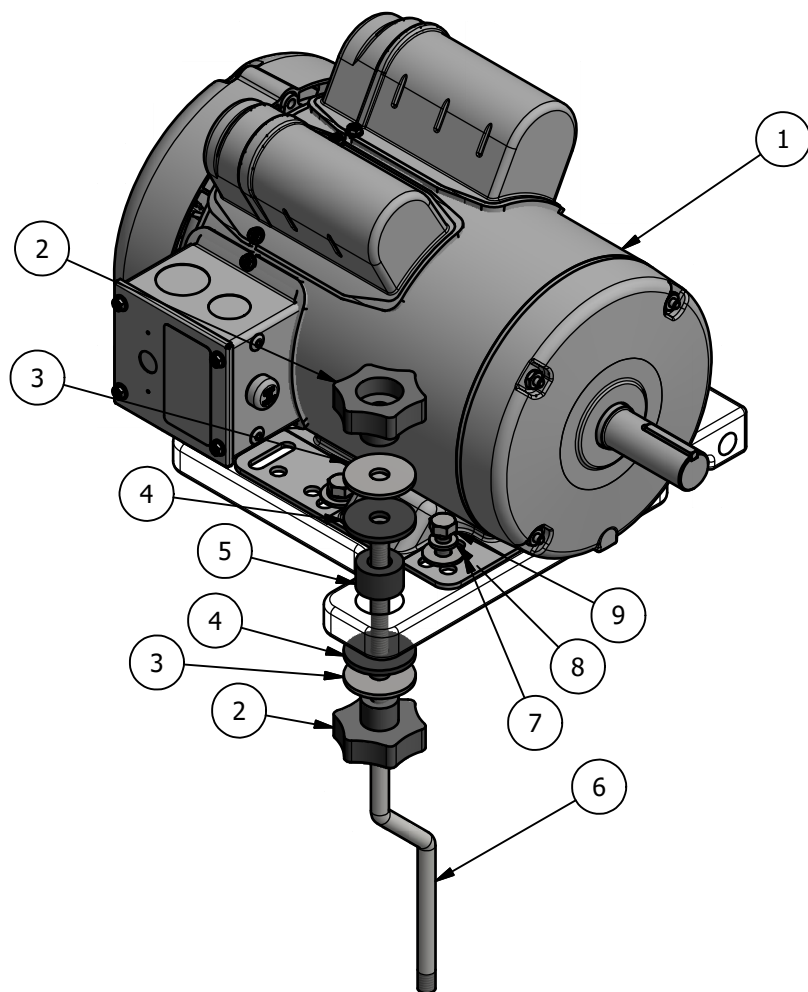
LIMITS ON DIMENSIONS UNLESS OTHERWISE SPECIFIED		2-PL DECIMAL $\pm .01$ 3-PL DECIMAL $\pm .005$ FRACTIONAL $\pm 1/64$ ANGULAR $\pm 1/2^\circ$	AAA PRODUCTS INTERNATIONAL 7114 Harry Hines Blvd Dallas, TX 75235	
DRAWN: RMckenna	DATE: 9/13/2017	CHECKED: KWalte	DATE: 9/13/2017	
SCALE: None	SHEET: 1 OF 1	RELEASED: HWomack	DATE: 9/13/2017	
TITLE: BOX, ELECTRIC, STANDARD, 2 HP, 230-1PH, HANDY THREAD			PART NO.: AY-H-383	REV.: F

THE INFORMATION CONTAINED WITHIN THIS DOCUMENT IS PROPRIETARY TO AAA PRODUCTS AND MAY NOT BE DISCLOSED WITHOUT PRIOR WRITTEN CONSENT

D:\Engineering\Inventory Files\Internal Drawings\11000\Electric\AY-H-383.dwg



THE INFORMATION CONTAINED WITHIN THIS DOCUMENT IS PROPRIETARY TO AAA PRODUCTS AND MAY NOT BE DISCLOSED WITHOUT PRIOR WRITTEN CONSENT



9	4	9-H-205	BOLT, 5/16-18 X 3/4, HEX HEAD, PLATED
8	4	9-H-322	WASHER, LOCK 5/16" ZINC PLATED.
7	4	9-H-206	WASHER, 5/16" FLAT PLATED
6	1	9-H-93	ROD, MOTOR MOUNT SUPPORT, HANDY THREAD
5	1	9-H-26	BUSHING, RUBBER FOR MOTOR
4	2	9-H-311	WASHER, NEOPRENE RUBBER, 1-1/2 X 3/8 X 1/8, SEE MSB2
3	2	9-H-37	WASHER, FENDER 3/8 X 1 1/2
2	2	9-H-55	KNOB, 3/8-16
1	1	9-H-293	MOTOR, 2 HP, 230 V, TEFC, 1 PHASE 1725 RPM
FLG	QTY	PART NO	DESCRIPTION

LIMITS ON DIMENSIONS
UNLESS
OTHERWISE SPECIFIED

2-PL DECIMAL $\pm .01$
3-PL DECIMAL $\pm .005$
FRACTIONAL $\pm 1/64$
ANGULAR $\pm 1/2^\circ$



**AAA PRODUCTS
INTERNATIONAL**
7114 Harry Hines Blvd
Dallas, TX 75235

DRAWN: RMcKenna

DATE: 9/13/2017

CHECKED: KWaitte

DATE: 9/13/2017

SCALE: None

SHEET: 1 OF 1

RELEASED: HWomack

DATE: 9/13/2017

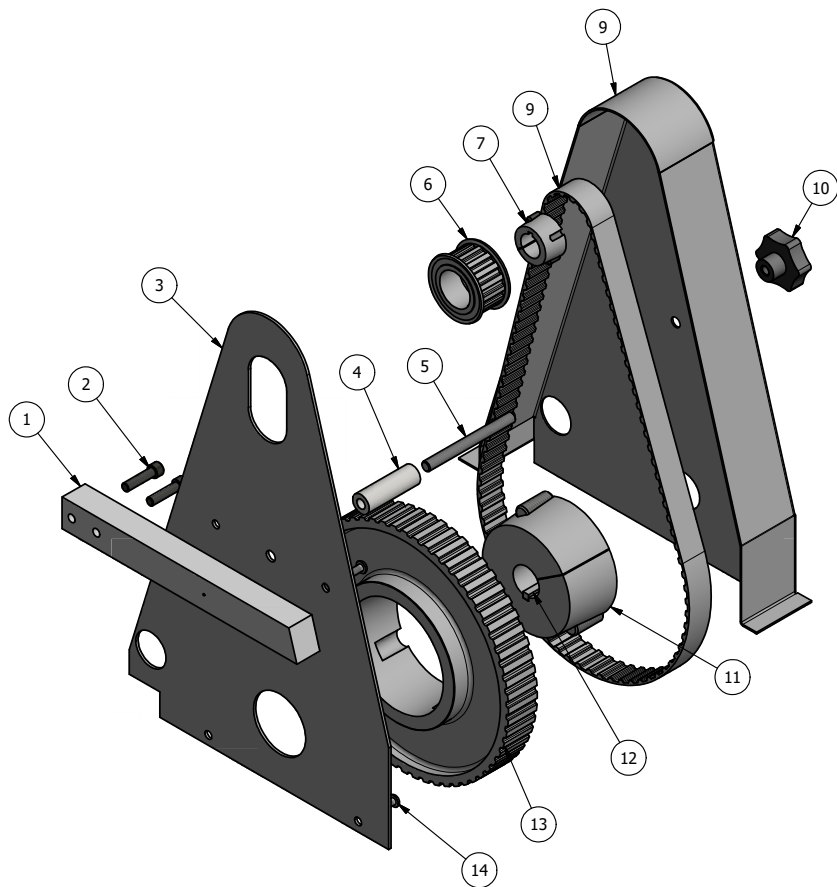
TITLE:

**MOTOR INSTALLATION,
2 HP, 230-1PH, 1725 RPM,
HANDY THREAD**

PART NO.:

AY-H-185

REV.:



SEE NOTE 3 ⇒	14	4	9-H-47	SCREW, 1/4-20 X 1/2, BUTTON HEAD SOCKET CAP
	13	1	9-H-221-60	PULLEY, TAPER LOCK, H100, 60 PITCH, 9.549 PD, HANDY THREAD
SEE NOTE 3 ⇒	12	1	9-H-10	KEY, 1/4" X 2"
	11	1	9-H-224	BUSHING, TAPER LOCK, #3020X1-3/16,
	10	1	9-H-55	KNOB, 3/8-16
	9	1	9-H-65	GUARD, BELT, HANDY THREAD
SEE NOTE 3 ⇒	8	1	445H100	BELT, SYNCHRONOUS, TIMING, H (.500) PITCH, 89 TEETH, 445H100, HANDY THREAD
SEE NOTE 3 ⇒	7	1	9-H-371	BUSHING, TAPER LOCK, #1108X7/8, HANDY THREAD
SEE NOTE 3 ⇒	6	1	9-H-221-14	PULLEY, TAPER LOCK, H100, 14 PITCH, 2.228 PD, HANDY THREAD
	5	1	9-H-357	STUD, BELT GUARD, ATTACHMENT, HANDY THREAD
	4	1	9-H-356	SPACER, BELT GUARD. ATTACHMENT, HANDY THREAD
	3	1	9-H-66	PLATE, BACK, BELT GUARD, HANDY THREAD
	2	2	V-402	SCREW, 5/16-18 X 1-1/4, SOCKET HEAD CAP
	1	1	9-H-96	BAR, BACK MOUNTING, GUARD, HANDY THREAD
FLG	QTY		PART NO	DESCRIPTION

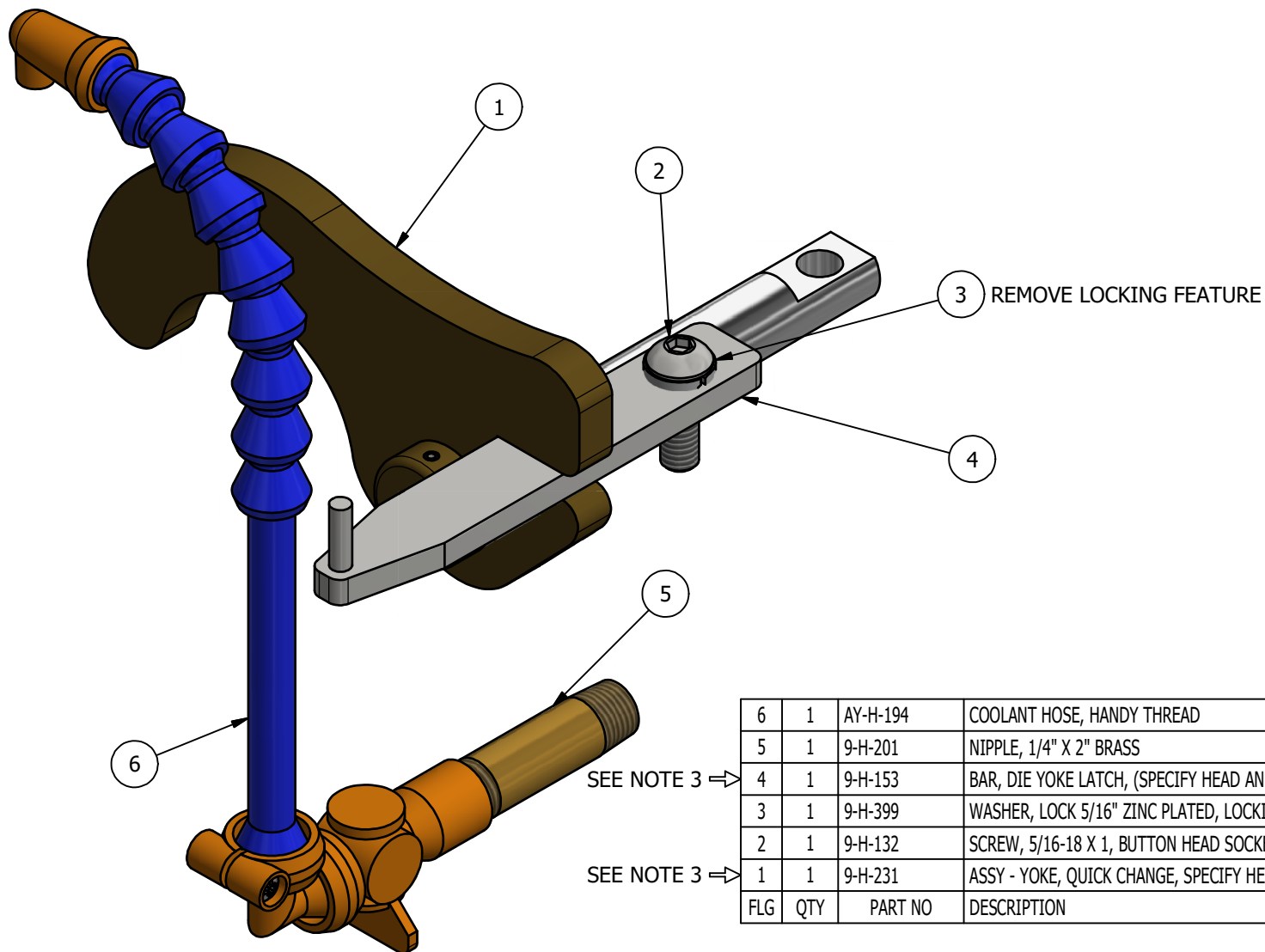
CUSTOMER NOTES:

- 1) ALWAYS PROVIDE MACHINE SERIAL NUMBER.
- 2) SEE ASSEMBLIES FOR INDIVIDUAL PARTS.
- 3) THESE PARTS ARE MACHINE SPECIFIC AND MUST MATCH THE SERIAL NUMBER OF THE MACHINE. PLEASE CONSULT FACTORY PRIOR ORDER PARTS.

C	9/11/2017	ADDED RATIO TO PART NUMBER
B	3/19/2007	CHANGED GUARD SPACER TO A 2-PIECE
A	7/1/1998	MODIFIED SWITCH SPACING
NO.	DATE	REVISION

LIMITS ON DIMENSIONS UNLESS OTHERWISE SPECIFIED		2-PL DECIMAL ± .01 3-PL DECIMAL ± .005 FRACTIONAL ± 1/64 ANGULAR ± 1/2°	AAA PRODUCTS INTERNATIONAL 7114 Harry Hines Blvd Dallas, TX 75235
DRAWN: RMckenna	DATE: 10/11/2017	CHECKED: KWalte	DATE: 10/11/2017
SCALE: None	SHEET: 1 OF 1	RELEASED: HWomack	DATE: 10/11/2017
TITLE: BELT INSTALLATION, 2 HP, 0.23 RATIO, 445H100 BELT, HANDY THREAD		PART NO.: AY-H-386-023	REV.: C

THE INFORMATION CONTAINED WITHIN THIS DOCUMENT IS PROPRIETARY TO AAA PRODUCTS AND MAY NOT BE DISCLOSED WITHOUT PRIOR WRITTEN CONSENT



SEE NOTE 3 ⇒

SEE NOTE 3 ⇒

6	1	AY-H-194	COOLANT HOSE, HANDY THREAD
5	1	9-H-201	NIPPLE, 1/4" X 2" BRASS
4	1	9-H-153	BAR, DIE YOKE LATCH, (SPECIFY HEAD AND ADAPTOR), HANDY THREAD
3	1	9-H-399	WASHER, LOCK 5/16" ZINC PLATED, LOCKING FEATURE REMOVED
2	1	9-H-132	SCREW, 5/16-18 X 1, BUTTON HEAD SOCKET CAP
1	1	9-H-231	ASSY - YOKE, QUICK CHANGE, SPECIFY HEAD, HANDY THREAD
FLG	QTY	PART NO	DESCRIPTION

CUSTOMER NOTES:

- 1) ALWAYS PROVIDE MACHINE SERIAL NUMBER.
- 2) SEE ASSEMBLIES FOR INDIVIDUAL PARTS.
- 3) THESE PARTS ARE MACHINE SPECIFIC AND MUST MATCH THE SERIAL NUMBER OF THE MACHINE. PLEASE CONSULT FACTORY PRIOR ORDER PARTS.

A	7/1/1998	MODIFEID SWITCH SPACING.
NO.	DATE	REVISION

LIMITS ON DIMENSIONS
UNLESS
OTHERWISE SPECIFIED

2-PL DECIMAL $\pm .01$
3-PL DECIMAL $\pm .005$
FRACTIONAL $\pm 1/64$
ANGULAR $\pm 1/2^\circ$



**AAA PRODUCTS
INTERNATIONAL**
7114 Harry Hines Blvd
Dallas, TX 75235

DRAWN: RMckenna

DATE: 1/2/1995

CHECKED: KWait

DATE: 1/29/1996

SCALE: None

SHEET: 1 OF 1

RELEASED: HWomack

DATE: 1/29/1996

TITLE:

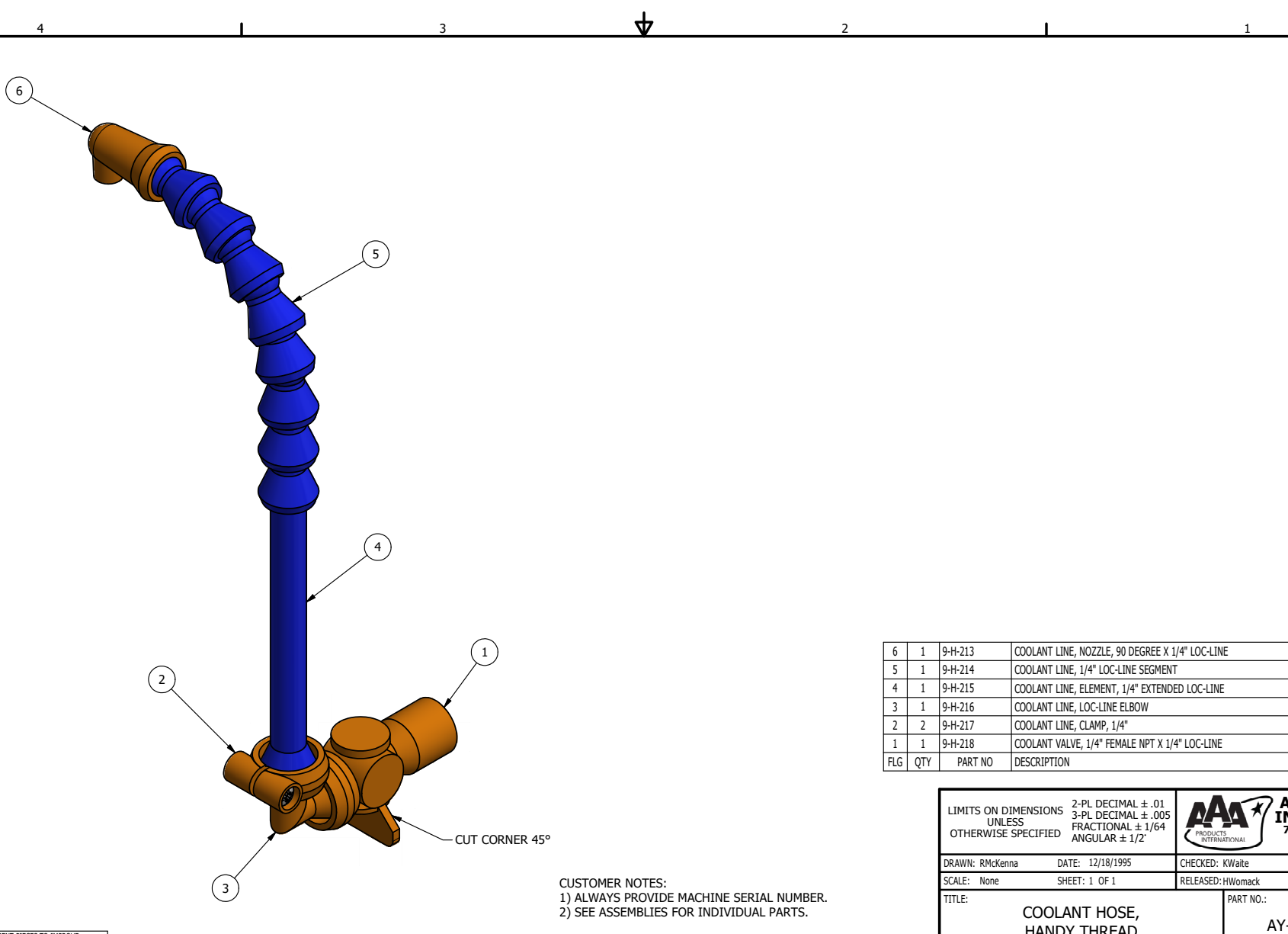
YOKE & COOLANT INTSL,
1" DRIVE SHAFT,
HANDY THREAD

PART NO.:

AY-H-228

REV.:

A



CUSTOMER NOTES:
1) ALWAYS PROVIDE MACHINE SERIAL NUMBER.
2) SEE ASSEMBLIES FOR INDIVIDUAL PARTS.

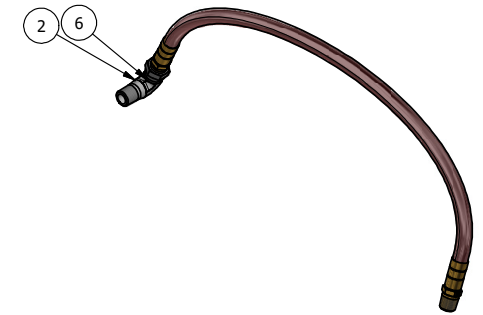
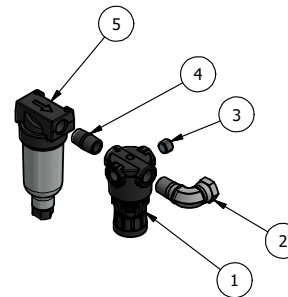
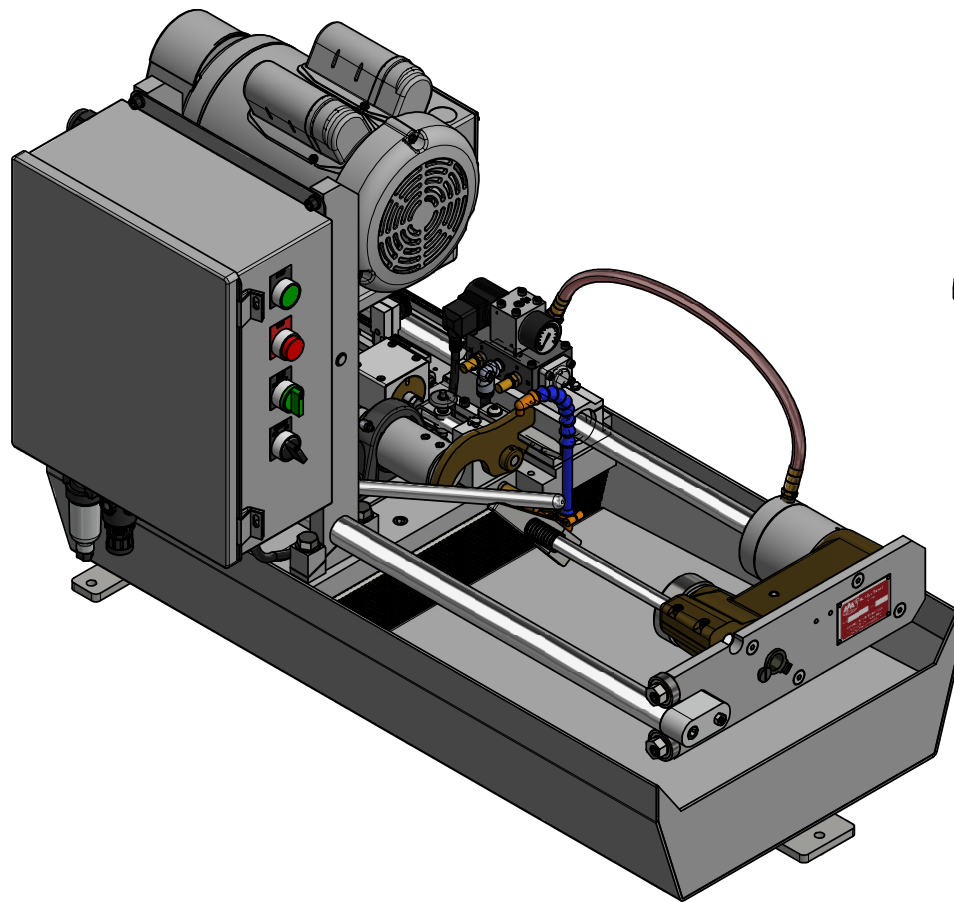
6	1	9-H-213	COOLANT LINE, NOZZLE, 90 DEGREE X 1/4" LOC-LINE
5	1	9-H-214	COOLANT LINE, 1/4" LOC-LINE SEGMENT
4	1	9-H-215	COOLANT LINE, ELEMENT, 1/4" EXTENDED LOC-LINE
3	1	9-H-216	COOLANT LINE, LOC-LINE ELBOW
2	2	9-H-217	COOLANT LINE, CLAMP, 1/4"
1	1	9-H-218	COOLANT VALVE, 1/4" FEMALE NPT X 1/4" LOC-LINE
FLG	QTY	PART NO	DESCRIPTION

LIMITS ON DIMENSIONS UNLESS OTHERWISE SPECIFIED		2-PL DECIMAL ± .01 3-PL DECIMAL ± .005 FRACTIONAL ± 1/64 ANGULAR ± 1/2°	AAA PRODUCTS INTERNATIONAL 7114 Harry Hines Blvd Dallas, TX 75235	
DRAWN: RMckenna		DATE: 12/18/1995		CHECKED: KWalte
SCALE: None		SHEET: 1 OF 1		DATE: 3/13/2017
TITLE: COOLANT HOSE, HANDY THREAD		PART NO.: AY-H-194		REV.: A

A	7/31/98	RMV 2 HOSE SEGMENT PIECES TO IMPROVE COOLANT DIRECTION.
NO.	DATE	REVISION

THE INFORMATION CONTAINED WITHIN THIS DOCUMENT IS PROPRIETARY TO AAA PRODUCTS AND MAY NOT BE DISCLOSED WITHOUT PRIOR WRITTEN CONSENT


P:\Engineering\Inventor Files\Internal Drawings\Lead Assembly\AY-H-194.dwg



6	1	9-H-370	HOSE, CHUCK CYLINDER, HANDY THREAD
5	1	9-H-76	FILTER, AIR INLET
4	1	9-H-200	NIPPLE, 1/4" HEX BRASS
3	1	V-19	PLUG, SOCKET PIPE 1/8" NPT (#601-3 PITTSBURG PLUG PART #.)
2	2	9-H-35	FITTING, 90 DEGREE SWIVEL, 1/4" NPT MALE X 1/4" NPT FEMALE
1	1	9-H-74	REGULATOR
FLG	QTY	PART NO	DESCRIPTION

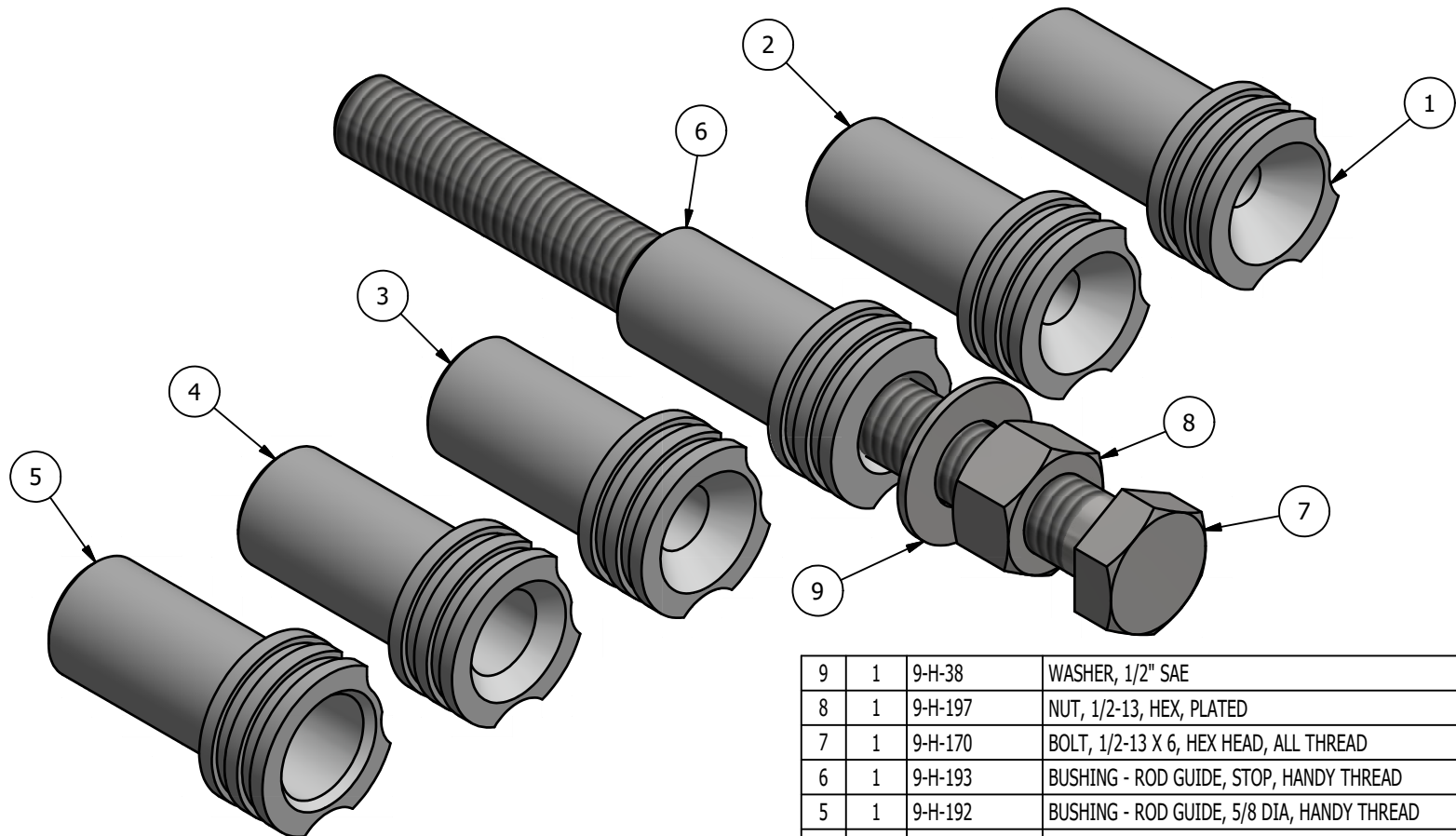
CUSTOMER NOTES:
 1) ALWAYS PROVIDE MACHINE SERIAL NUMBER.
 2) SEE ASSEMBLIES FOR INDIVIDUAL PARTS.

B	12/03/2001	CHNGD ITEM 3 FROM 9-H-35 STRAIGHT
A	7/1/1998	MODIFIED SWITCH SPACING
NO.	DATE	REVISION

LIMITS ON DIMENSIONS UNLESS OTHERWISE SPECIFIED		2-PL DECIMAL $\pm .01$ 3-PL DECIMAL $\pm .005$ FRACTIONAL $\pm 1/64$ ANGULAR $\pm 1/2^\circ$		 AAA PRODUCTS INTERNATIONAL 7114 Harry Hines Blvd Dallas, TX 75235	
DRAWN: RMckenna	DATE: 1/2/1995	CHECKED: HWomack	DATE: 1/29/1996		
SCALE: None	SHEET: 1 OF 1	RELEASED: KWaite	DATE: 1/29/1996		
TITLE: AIR LINE INSTALLATION, HANDY THREAD				PART NO.: AY-H-226	REV.: B

THE INFORMATION CONTAINED WITHIN THIS DOCUMENT IS PROPRIETARY TO AAA PRODUCTS AND MAY NOT BE DISCLOSED WITHOUT PRIOR WRITTEN CONSENT

C:\Engineering\Inventor Files\Internal Drawings\Head Assembly\AY-H-226.dwg



9	1	9-H-38	WASHER, 1/2" SAE
8	1	9-H-197	NUT, 1/2-13, HEX, PLATED
7	1	9-H-170	BOLT, 1/2-13 X 6, HEX HEAD, ALL THREAD
6	1	9-H-193	BUSHING - ROD GUIDE, STOP, HANDY THREAD
5	1	9-H-192	BUSHING - ROD GUIDE, 5/8 DIA, HANDY THREAD
4	1	9-H-191	BUSHING - ROD GUIDE, 1/2 DIA, HANDY THREAD
3	1	9-H-190	BUSHING - ROD GUIDE, 3/8 DIA, HANDY THREAD
2	1	9-H-189	BUSHING - ROD GUIDE, 5/16 DIA, HANDY THREAD
1	1	9-H-188	BUSHING - ROD GUIDE, 1/4 DIA, HANDY THREAD
FLG	QTY	PART NO	DESCRIPTION

LIMITS ON DIMENSIONS
UNLESS
OTHERWISE SPECIFIED

2-PL DECIMAL $\pm .01$
3-PL DECIMAL $\pm .005$
FRACTIONAL $\pm 1/64$
ANGULAR $\pm 1/2^\circ$



**AAA PRODUCTS
INTERNATIONAL**
7114 Harry Hines Blvd
Dallas, TX 75235

DRAWN: RMcKenna

DATE: 9/13/2017

CHECKED: KWaitte

DATE: 9/13/2017

SCALE: None

SHEET: 1 OF 1

RELEASED: HWomack

DATE: 9/13/2017

TITLE:

**KIT, BUSHING, ROD GUIDE,
HANDY THREAD**

PART NO.:

AY-H-GBK

REV.: