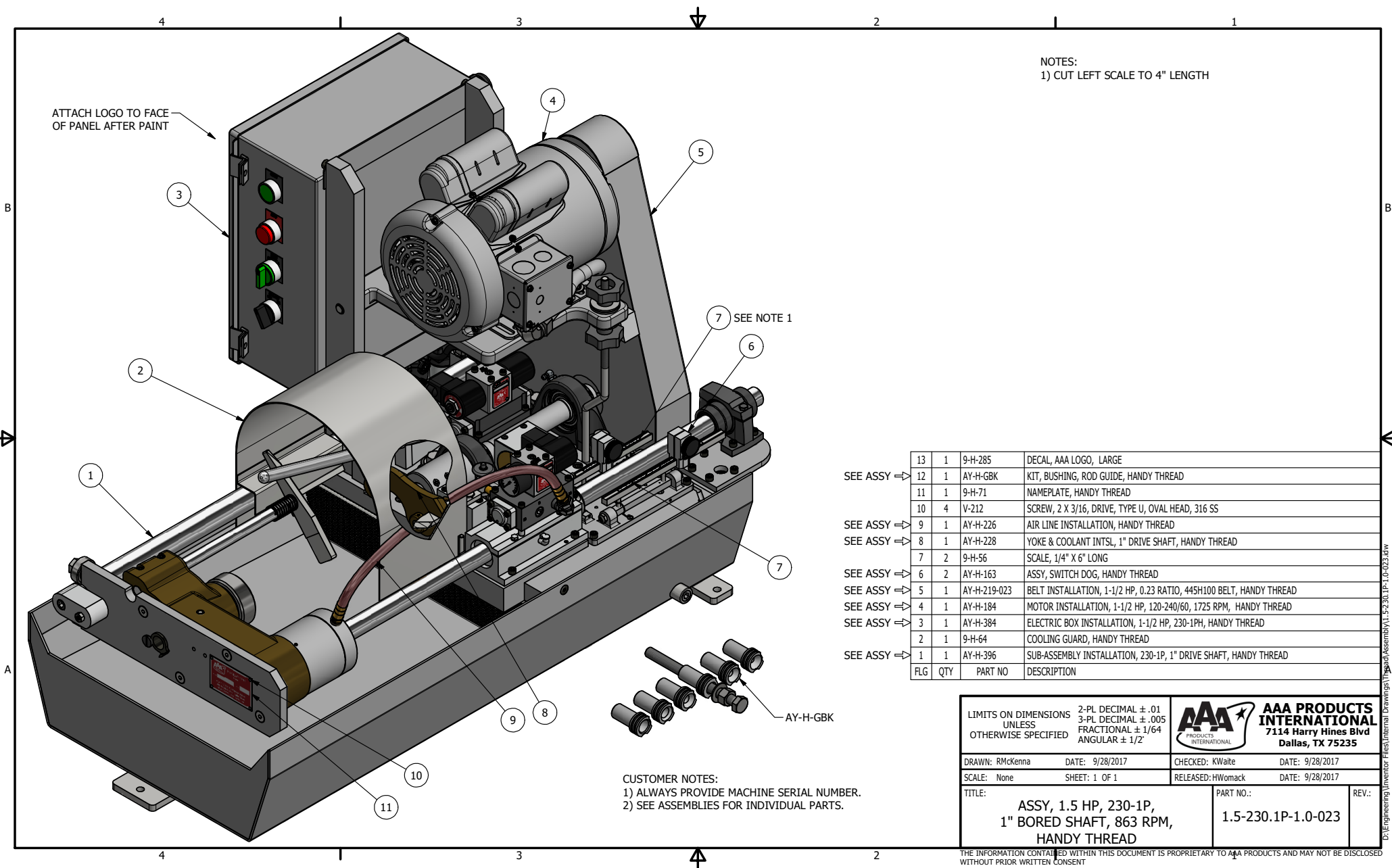


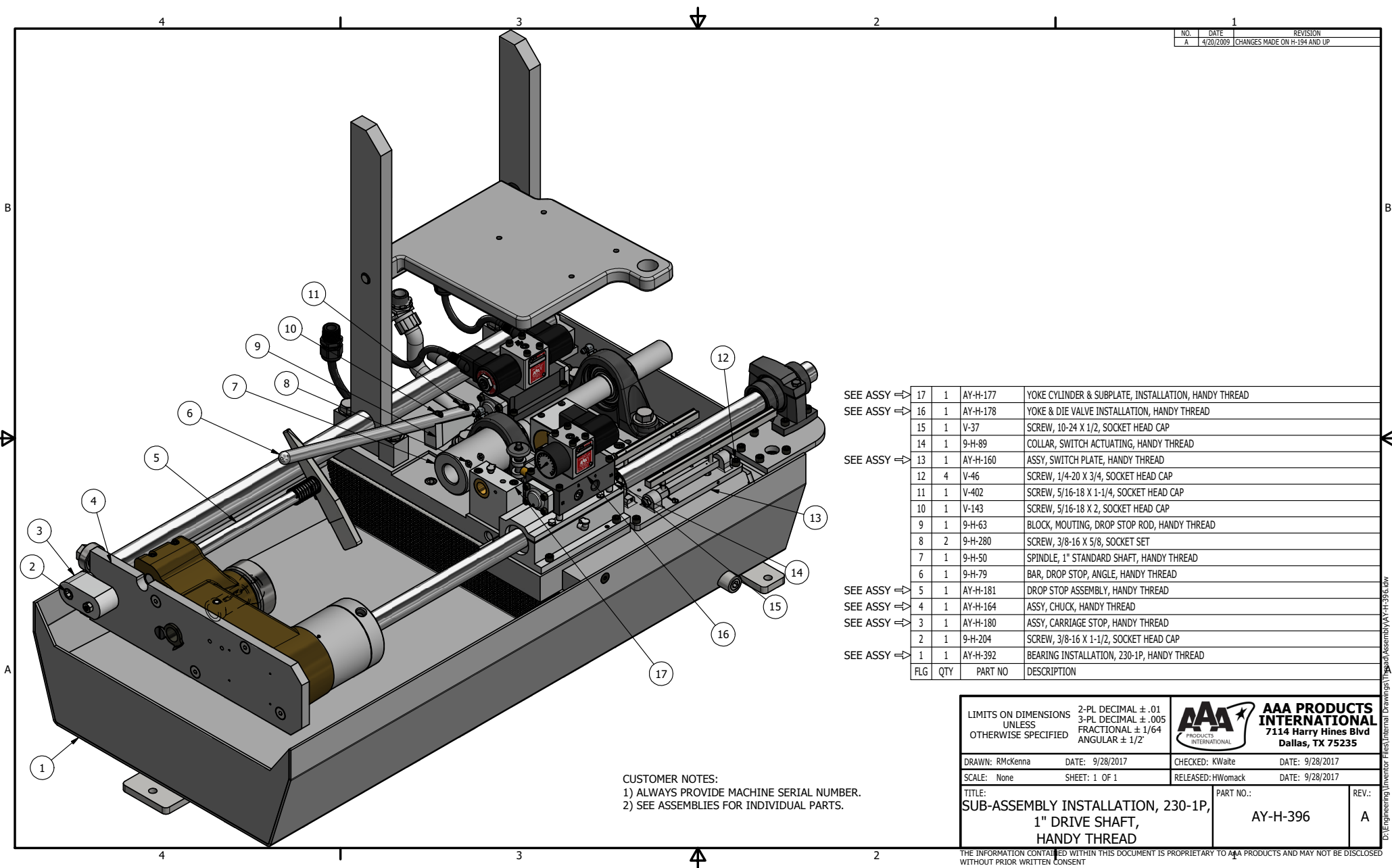
Handy Thread Parts

Associated Drawings

Specific parts may be customized and unique for each Handy-Thread manufactured. Machine serial numbers must be provided so ordered parts can be cross-referenced. Failure to provide a machine serial number may cause the incorrect ordering of parts and assemblies.

These drawings are for a generic machine using a pulley ratio of 0.23 which is approximately 400 rpm. Pulleys are changed to provide different machine rpms.





| NO. | DATE | REVISION |
|-----|-----------|------------------------------|
| A | 4/20/2009 | CHANGES MADE ON H-194 AND UP |

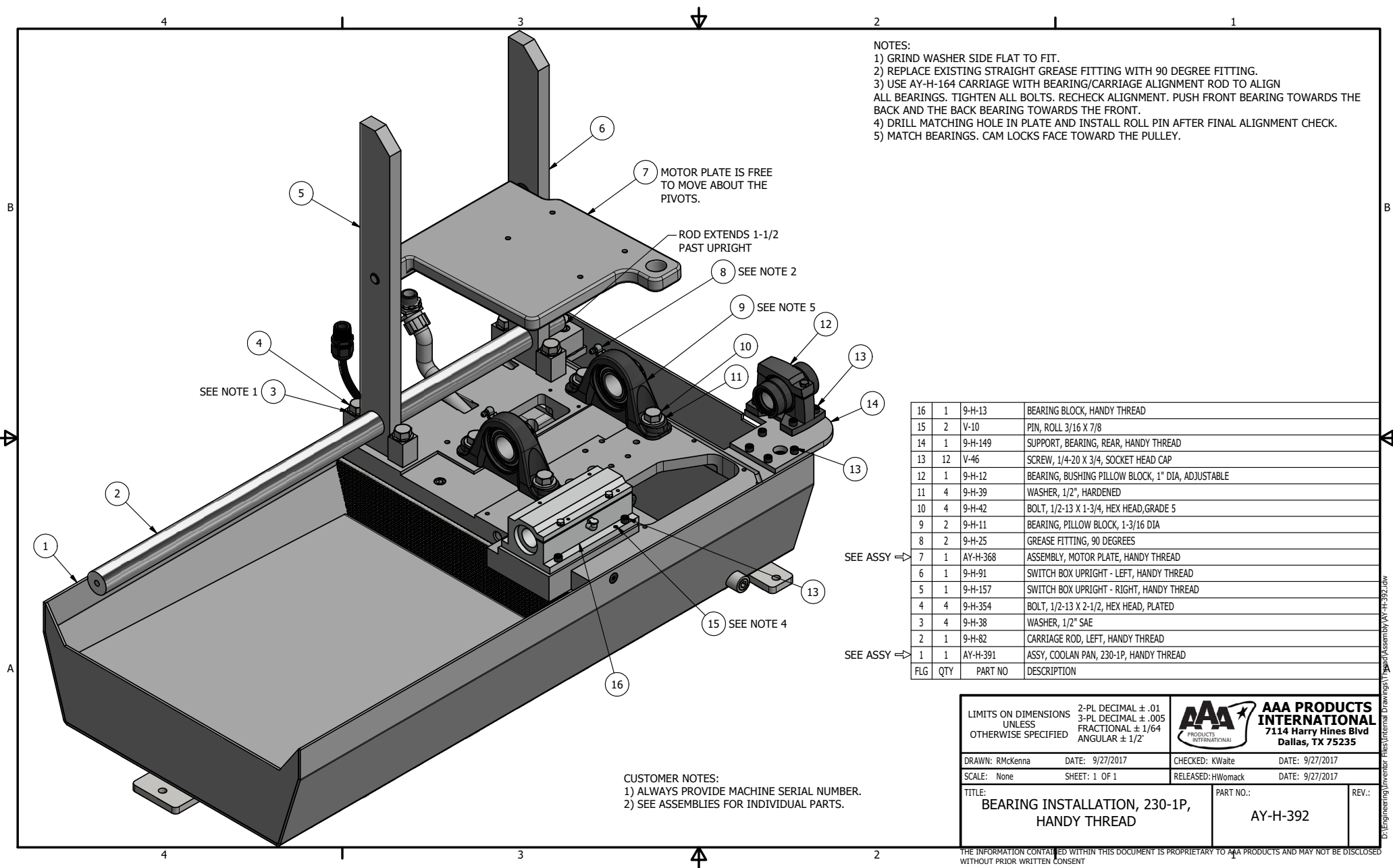
| | | | | |
|------------|-----|---|----------|--|
| SEE ASSY ⇒ | 17 | 1 | AY-H-177 | YOKE CYLINDER & SUBPLATE, INSTALLATION, HANDY THREAD |
| SEE ASSY ⇒ | 16 | 1 | AY-H-178 | YOKE & DIE VALVE INSTALLATION, HANDY THREAD |
| | 15 | 1 | V-37 | SCREW, 10-24 X 1/2, SOCKET HEAD CAP |
| | 14 | 1 | 9-H-89 | COLLAR, SWITCH ACTUATING, HANDY THREAD |
| SEE ASSY ⇒ | 13 | 1 | AY-H-160 | ASSY, SWITCH PLATE, HANDY THREAD |
| | 12 | 4 | V-46 | SCREW, 1/4-20 X 3/4, SOCKET HEAD CAP |
| | 11 | 1 | V-402 | SCREW, 5/16-18 X 1-1/4, SOCKET HEAD CAP |
| | 10 | 1 | V-143 | SCREW, 5/16-18 X 2, SOCKET HEAD CAP |
| | 9 | 1 | 9-H-63 | BLOCK, MOUTING, DROP STOP ROD, HANDY THREAD |
| | 8 | 2 | 9-H-280 | SCREW, 3/8-16 X 5/8, SOCKET SET |
| | 7 | 1 | 9-H-50 | SPINDLE, 1" STANDARD SHAFT, HANDY THREAD |
| | 6 | 1 | 9-H-79 | BAR, DROP STOP, ANGLE, HANDY THREAD |
| SEE ASSY ⇒ | 5 | 1 | AY-H-181 | DROP STOP ASSEMBLY, HANDY THREAD |
| SEE ASSY ⇒ | 4 | 1 | AY-H-164 | ASSY, CHUCK, HANDY THREAD |
| SEE ASSY ⇒ | 3 | 1 | AY-H-180 | ASSY, CARRIAGE STOP, HANDY THREAD |
| | 2 | 1 | 9-H-204 | SCREW, 3/8-16 X 1-1/2, SOCKET HEAD CAP |
| SEE ASSY ⇒ | 1 | 1 | AY-H-392 | BEARING INSTALLATION, 230-1P, HANDY THREAD |
| FLG | QTY | | PART NO | DESCRIPTION |

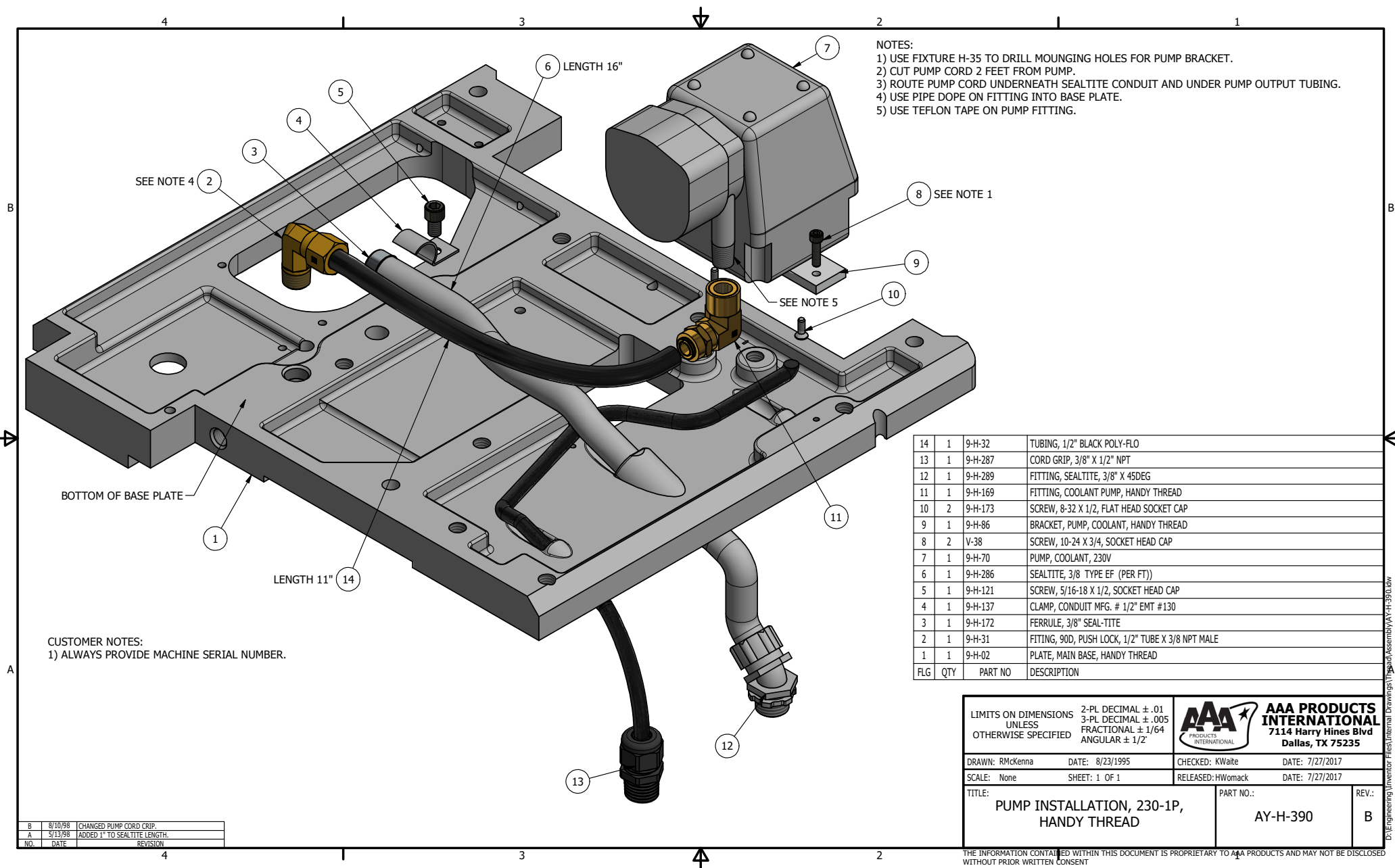
CUSTOMER NOTES:
1) ALWAYS PROVIDE MACHINE SERIAL NUMBER.
2) SEE ASSEMBLIES FOR INDIVIDUAL PARTS.

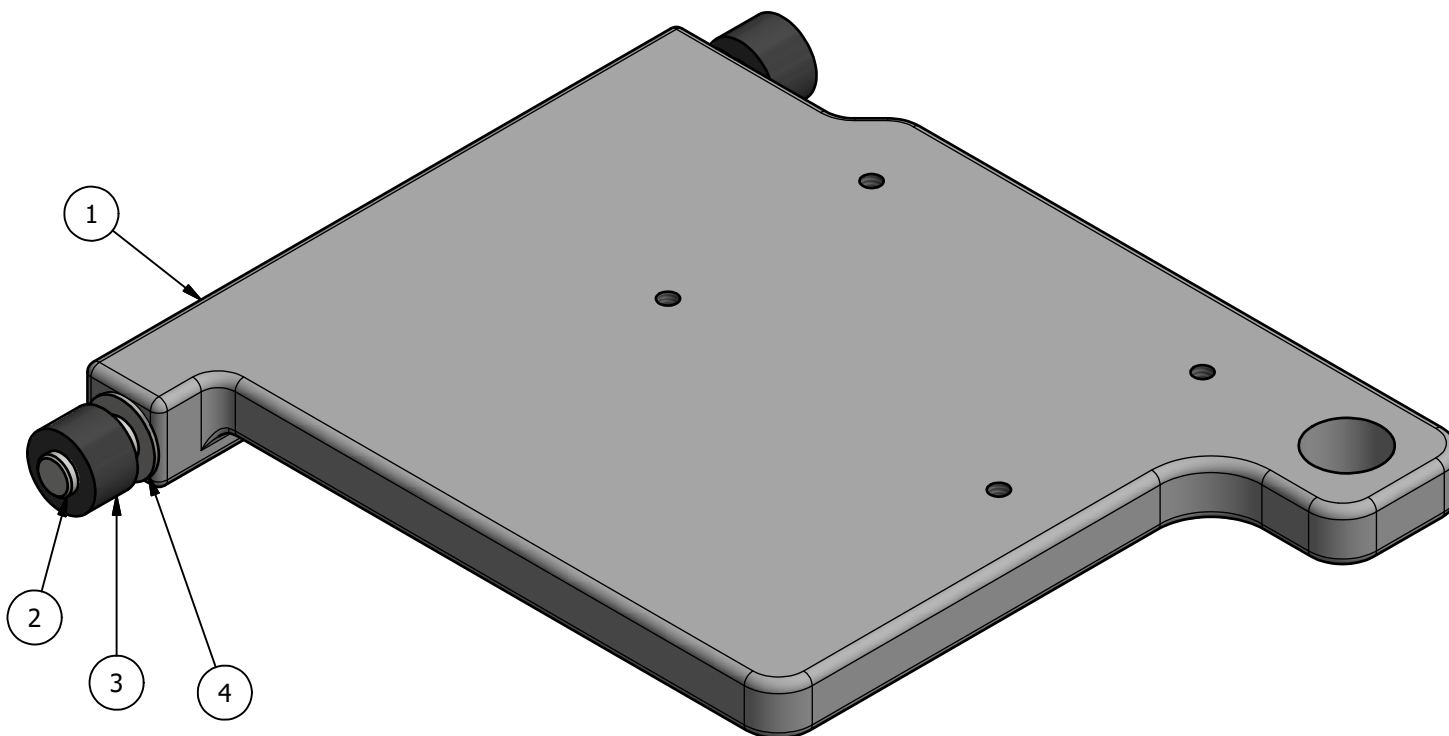
| | | | | | |
|---|-----------------|--|-----------------|--|------------|
| LIMITS ON DIMENSIONS UNLESS OTHERWISE SPECIFIED | | 2-PL DECIMAL ± .01 3-PL DECIMAL ± .005 FRACTIONAL ± 1/64 ANGULAR ± 1/2° | | AAA PRODUCTS INTERNATIONAL 7114 Harry Hines Blvd Dallas, TX 75235 | |
| DRAWN: RMckenna | DATE: 9/28/2017 | CHECKED: KWaitte | DATE: 9/28/2017 | | |
| SCALE: None | SHEET: 1 OF 1 | RELEASED: HWomack | DATE: 9/28/2017 | | |
| TITLE: SUB-ASSEMBLY INSTALLATION, 230-1P, 1" DRIVE SHAFT, HANDY THREAD | | | | PART NO.: AY-H-396 | REV.: A |

THE INFORMATION CONTAINED WITHIN THIS DOCUMENT IS PROPRIETARY TO AAA PRODUCTS AND MAY NOT BE DISCLOSED WITHOUT PRIOR WRITTEN CONSENT

D:\Engineering\Inventor Files\Internal Drawings\Head Assembly\AY-H-396.dwg







| | | | |
|-----|-----|---------|----------------------------------|
| 4 | 2 | 9-H-38 | WASHER, 1/2" SAE |
| 3 | 2 | 9-H-26 | BUSHING, RUBBER FOR MOTOR |
| 2 | 2 | 9-H-115 | PIN, 1/2 X 2-1/4 DOWEL |
| 1 | 1 | 9-H-01 | BASE - MOTOR MOUNT, HANDY THREAD |
| FLG | QTY | PART NO | DESCRIPTION |

LIMITS ON DIMENSIONS
UNLESS
OTHERWISE SPECIFIED

2-PL DECIMAL $\pm .01$
3-PL DECIMAL $\pm .005$
FRACTIONAL $\pm 1/64$
ANGULAR $\pm 1/2^\circ$



**AAA PRODUCTS
INTERNATIONAL**
7114 Harry Hines Blvd
Dallas, TX 75235

DRAWN: RMckenna

DATE: 6/30/2017

CHECKED: KWait

DATE: 6/30/2017

SCALE: None

SHEET: 1 OF 1

RELEASED: HWomack

DATE: 6/30/2017

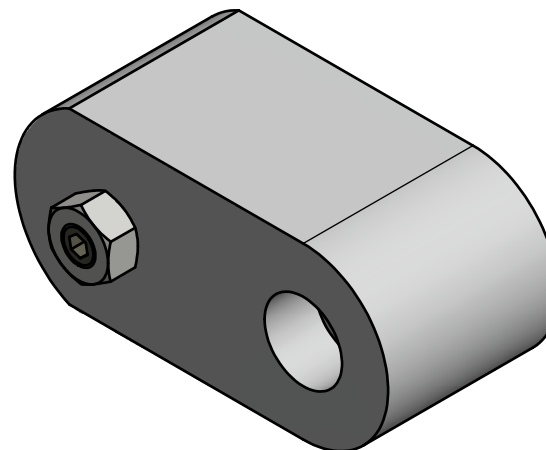
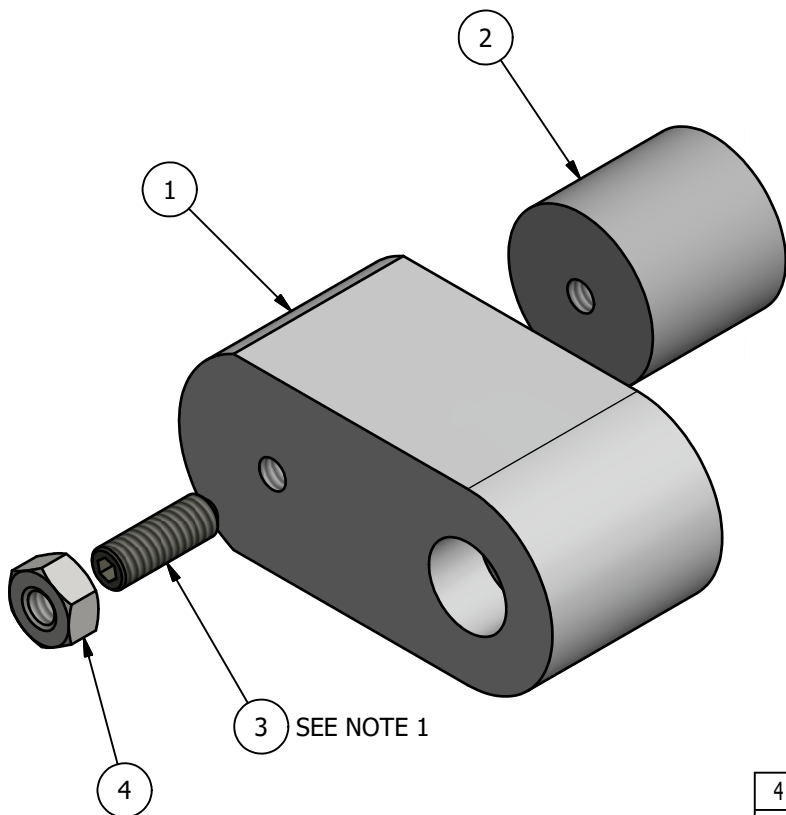
TITLE:

ASSEMBLY, MOTOR PLATE,
HANDY THREAD

PART NO.:

AY-H-368

REV.:



| | | | |
|-----|-----|---------|---|
| 4 | 1 | J-296 | NUT, 1/4-20, HEX, PLATED |
| 3 | 1 | 9-H-128 | SCREW, 1/4-20 X 3/4, CUP POINT SOCKET SET |
| 2 | 1 | 9-H-57 | MAGNET, 1-1/16" X 1" ROUND, 18 LBS PULL FORCE |
| 1 | 1 | 9-H-95 | CARRIAGE STOP, HANDY THREAD |
| FLG | QTY | PART NO | DESCRIPTION |

NOTES:
1) LOCTITE SCREW 1/2" REMAINING OUT OF MAGNET.

LIMITS ON DIMENSIONS
UNLESS
OTHERWISE SPECIFIED

2-PL DECIMAL $\pm .01$
3-PL DECIMAL $\pm .005$
FRACTIONAL $\pm 1/64$
ANGULAR $\pm 1/2^\circ$



**AAA PRODUCTS
INTERNATIONAL**
7114 Harry Hines Blvd
Dallas, TX 75235

DRAWN: RMcKenna

DATE: 9/1/1995

CHECKED: KWait

DATE: 3/13/2017

SCALE: None

SHEET: 1 OF 1

RELEASED: HWomack

DATE: 3/13/2017

TITLE:

**ASSY, CARRIAGE STOP,
HANDY THREAD**

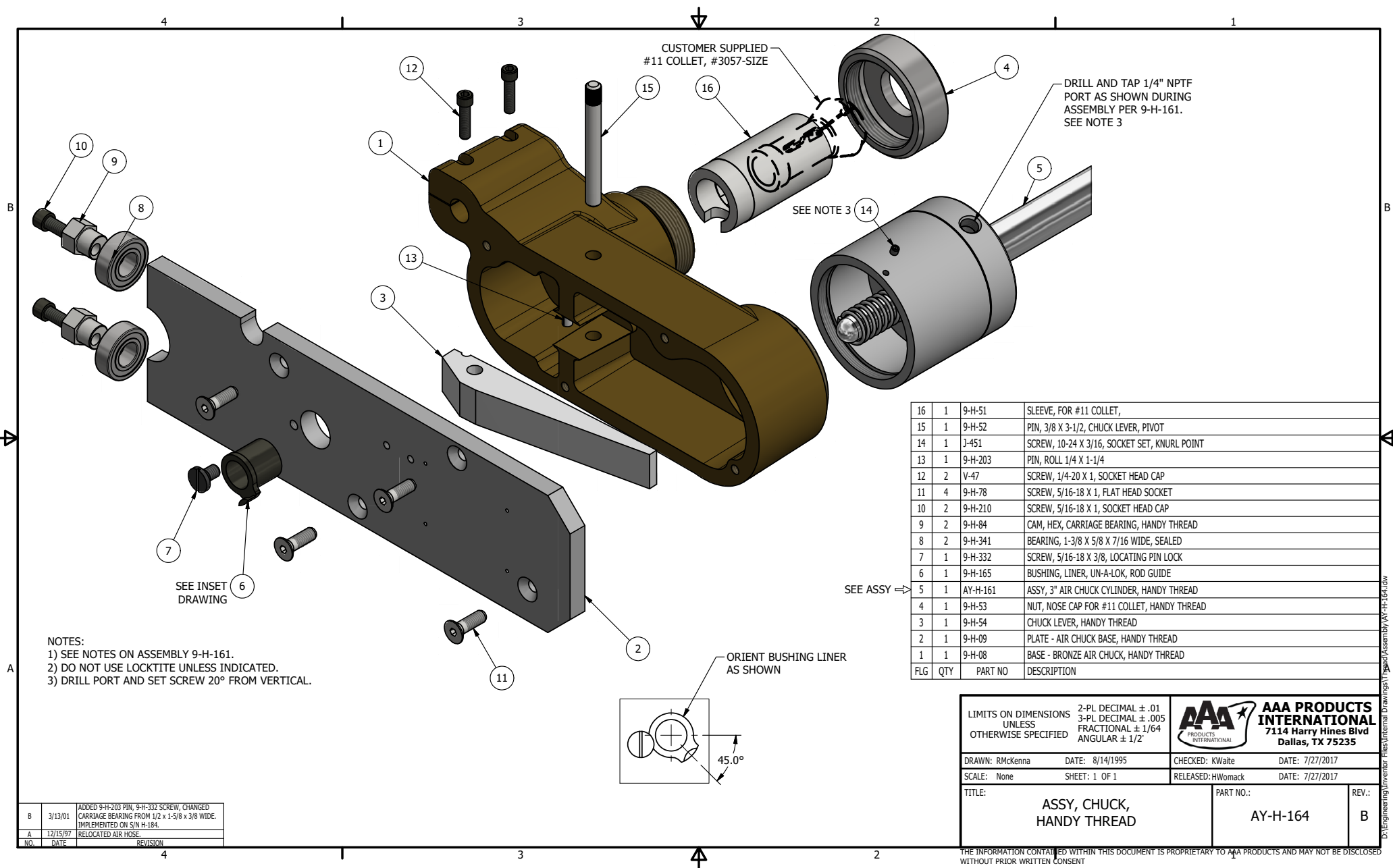
PART NO.:

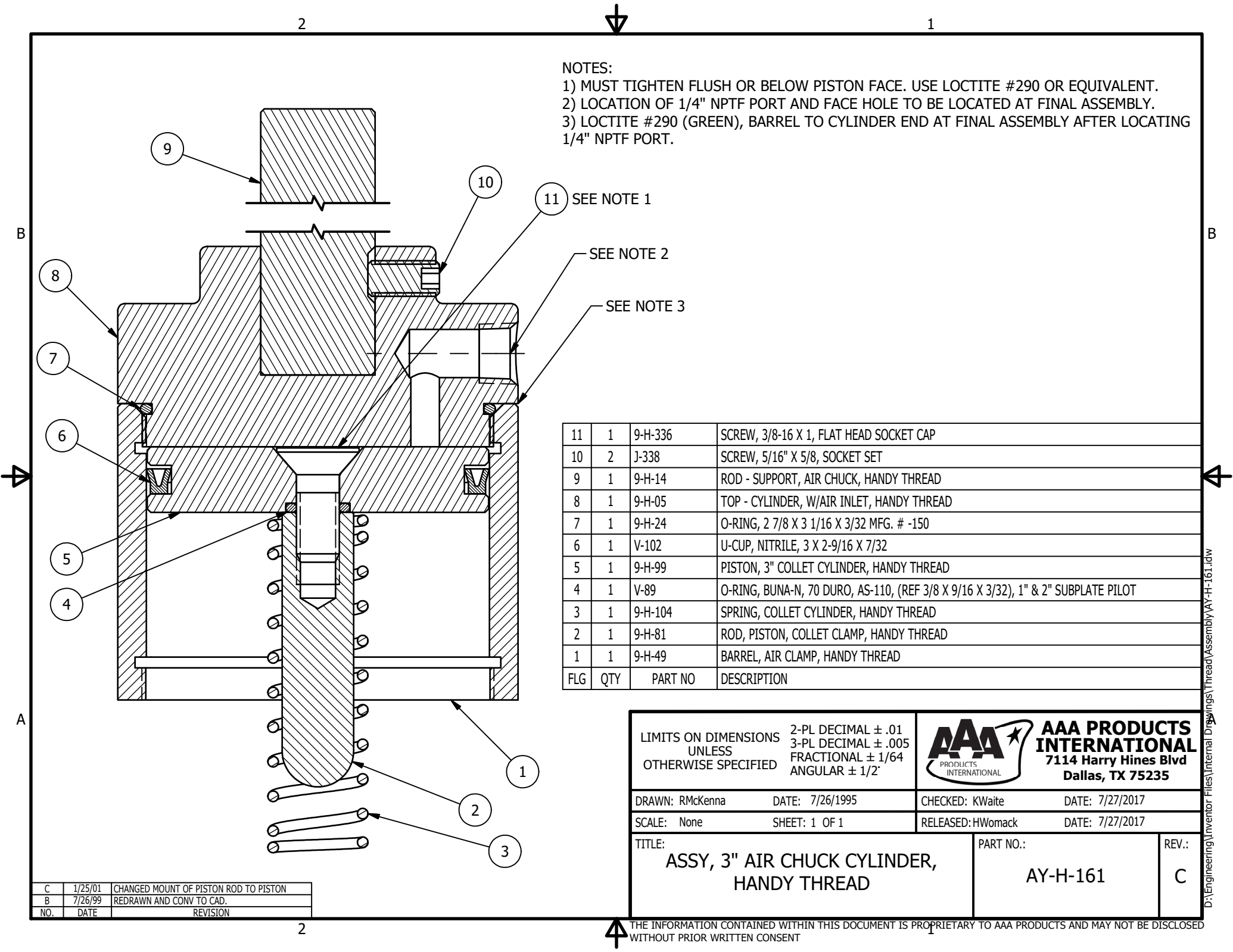
AY-H-180

REV.:

A

| | | |
|-----|--------|----------------|
| A | 7/1/98 | REVISED NOTE 1 |
| NO. | DATE | REVISION |





NOTES:
1) MUST TIGHTEN FLUSH OR BELOW PISTON FACE. USE LOCTITE #290 OR EQUIVALENT.
2) LOCATION OF 1/4" NPTF PORT AND FACE HOLE TO BE LOCATED AT FINAL ASSEMBLY.
3) LOCTITE #290 (GREEN), BARREL TO CYLINDER END AT FINAL ASSEMBLY AFTER LOCATING 1/4" NPTF PORT.

| | | | |
|-----|-----|---------|--|
| 11 | 1 | 9-H-336 | SCREW, 3/8-16 X 1, FLAT HEAD SOCKET CAP |
| 10 | 2 | J-338 | SCREW, 5/16" X 5/8, SOCKET SET |
| 9 | 1 | 9-H-14 | ROD - SUPPORT, AIR CHUCK, HANDY THREAD |
| 8 | 1 | 9-H-05 | TOP - CYLINDER, W/AIR INLET, HANDY THREAD |
| 7 | 1 | 9-H-24 | O-RING, 2 7/8 X 3 1/16 X 3/32 MFG. # -150 |
| 6 | 1 | V-102 | U-CUP, NITRILE, 3 X 2-9/16 X 7/32 |
| 5 | 1 | 9-H-99 | PISTON, 3" COLLET CYLINDER, HANDY THREAD |
| 4 | 1 | V-89 | O-RING, BUNA-N, 70 DURO, AS-110, (REF 3/8 X 9/16 X 3/32), 1" & 2" SUBPLATE PILOT |
| 3 | 1 | 9-H-104 | SPRING, COLLET CYLINDER, HANDY THREAD |
| 2 | 1 | 9-H-81 | ROD, PISTON, COLLET CLAMP, HANDY THREAD |
| 1 | 1 | 9-H-49 | BARREL, AIR CLAMP, HANDY THREAD |
| FLG | QTY | PART NO | DESCRIPTION |

LIMITS ON DIMENSIONS
UNLESS
OTHERWISE SPECIFIED

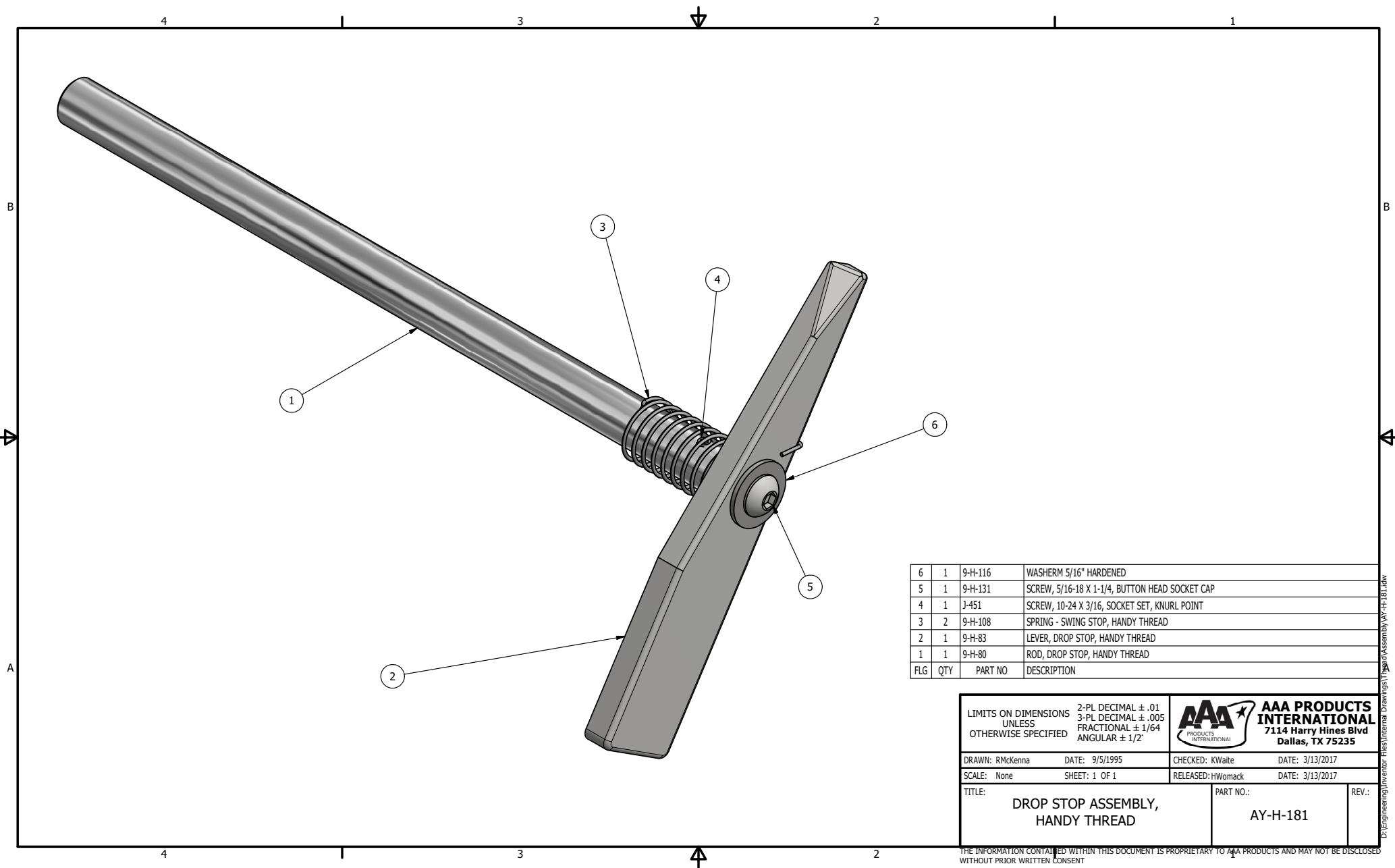
2-PL DECIMAL ± .01
3-PL DECIMAL ± .005
FRACTIONAL ± 1/64
ANGULAR ± 1/2°

AAA
PRODUCTS
INTERNATIONAL

**AAA PRODUCTS
INTERNATIONAL**
7114 Harry Hines Blvd
Dallas, TX 75235

| | | | |
|--|-----------------|------------------------------|-------------------|
| DRAWN: RMcKenna | DATE: 7/26/1995 | CHECKED: KWaitte | DATE: 7/27/2017 |
| SCALE: None | SHEET: 1 OF 1 | RELEASED: HWomack | DATE: 7/27/2017 |
| TITLE: ASSY, 3" AIR CHUCK CYLINDER, HANDY THREAD | | PART NO.: AY-H-161 | REV.: C |

| | | |
|-----|---------|---------------------------------------|
| C | 1/25/01 | CHANGED MOUNT OF PISTON ROD TO PISTON |
| B | 7/26/99 | REDRAWN AND CONV TO CAD. |
| NO. | DATE | REVISION |

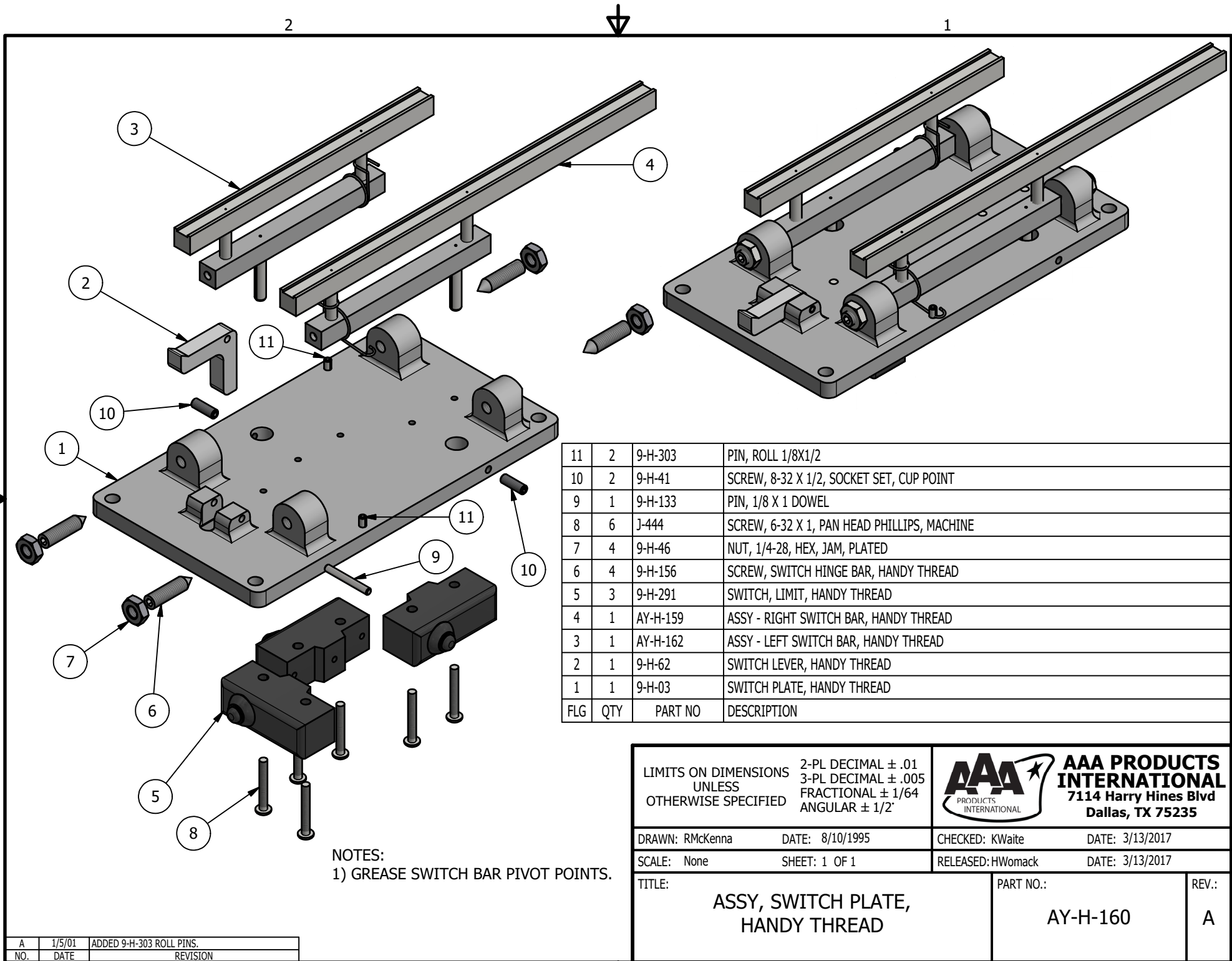


| | | | |
|-----|-----|---------|--|
| 6 | 1 | 9-H-116 | WASHER 5/16" HARDENED |
| 5 | 1 | 9-H-131 | SCREW, 5/16-18 X 1-1/4, BUTTON HEAD SOCKET CAP |
| 4 | 1 | J-451 | SCREW, 10-24 X 3/16, SOCKET SET, KNURL POINT |
| 3 | 2 | 9-H-108 | SPRING - SWING STOP, HANDY THREAD |
| 2 | 1 | 9-H-83 | LEVER, DROP STOP, HANDY THREAD |
| 1 | 1 | 9-H-80 | ROD, DROP STOP, HANDY THREAD |
| FLG | QTY | PART NO | DESCRIPTION |

| | | | | |
|---|----------------|---|--|-------|
| LIMITS ON DIMENSIONS UNLESS OTHERWISE SPECIFIED | | 2-PL DECIMAL $\pm .01$ 3-PL DECIMAL $\pm .005$ FRACTIONAL $\pm 1/64$ ANGULAR $\pm 1/2^\circ$ | AAA PRODUCTS INTERNATIONAL 7114 Harry Hines Blvd Dallas, TX 75235 | |
| DRAWN: RMckenna | DATE: 9/5/1995 | CHECKED: KWaite | DATE: 3/13/2017 | |
| SCALE: None | SHEET: 1 OF 1 | RELEASED: HWomack | DATE: 3/13/2017 | |
| TITLE: DROP STOP ASSEMBLY, HANDY THREAD | | | PART NO.: AY-H-181 | REV.: |

THE INFORMATION CONTAINED WITHIN THIS DOCUMENT IS PROPRIETARY TO AAA PRODUCTS AND MAY NOT BE DISCLOSED WITHOUT PRIOR WRITTEN CONSENT


D:\Engineering\Inventory Files\Internal Drawings\1\Head Assembly\AY-H-181.dwg



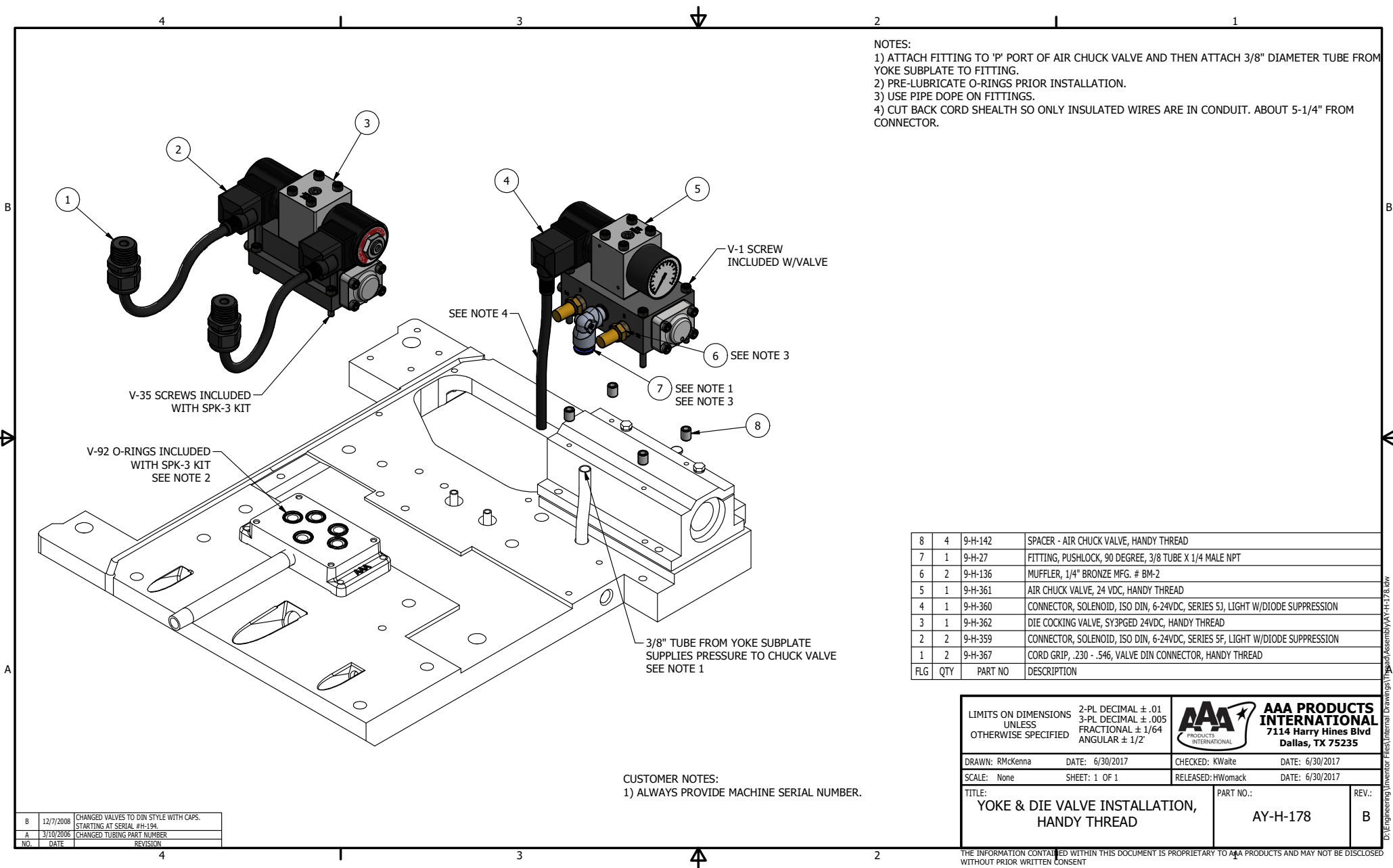
| | | | |
|-----|-----|----------|---|
| 11 | 2 | 9-H-303 | PIN, ROLL 1/8X1/2 |
| 10 | 2 | 9-H-41 | SCREW, 8-32 X 1/2, SOCKET SET, CUP POINT |
| 9 | 1 | 9-H-133 | PIN, 1/8 X 1 DOWEL |
| 8 | 6 | J-444 | SCREW, 6-32 X 1, PAN HEAD PHILLIPS, MACHINE |
| 7 | 4 | 9-H-46 | NUT, 1/4-28, HEX, JAM, PLATED |
| 6 | 4 | 9-H-156 | SCREW, SWITCH HINGE BAR, HANDY THREAD |
| 5 | 3 | 9-H-291 | SWITCH, LIMIT, HANDY THREAD |
| 4 | 1 | AY-H-159 | ASSY - RIGHT SWITCH BAR, HANDY THREAD |
| 3 | 1 | AY-H-162 | ASSY - LEFT SWITCH BAR, HANDY THREAD |
| 2 | 1 | 9-H-62 | SWITCH LEVER, HANDY THREAD |
| 1 | 1 | 9-H-03 | SWITCH PLATE, HANDY THREAD |
| FLG | QTY | PART NO | DESCRIPTION |

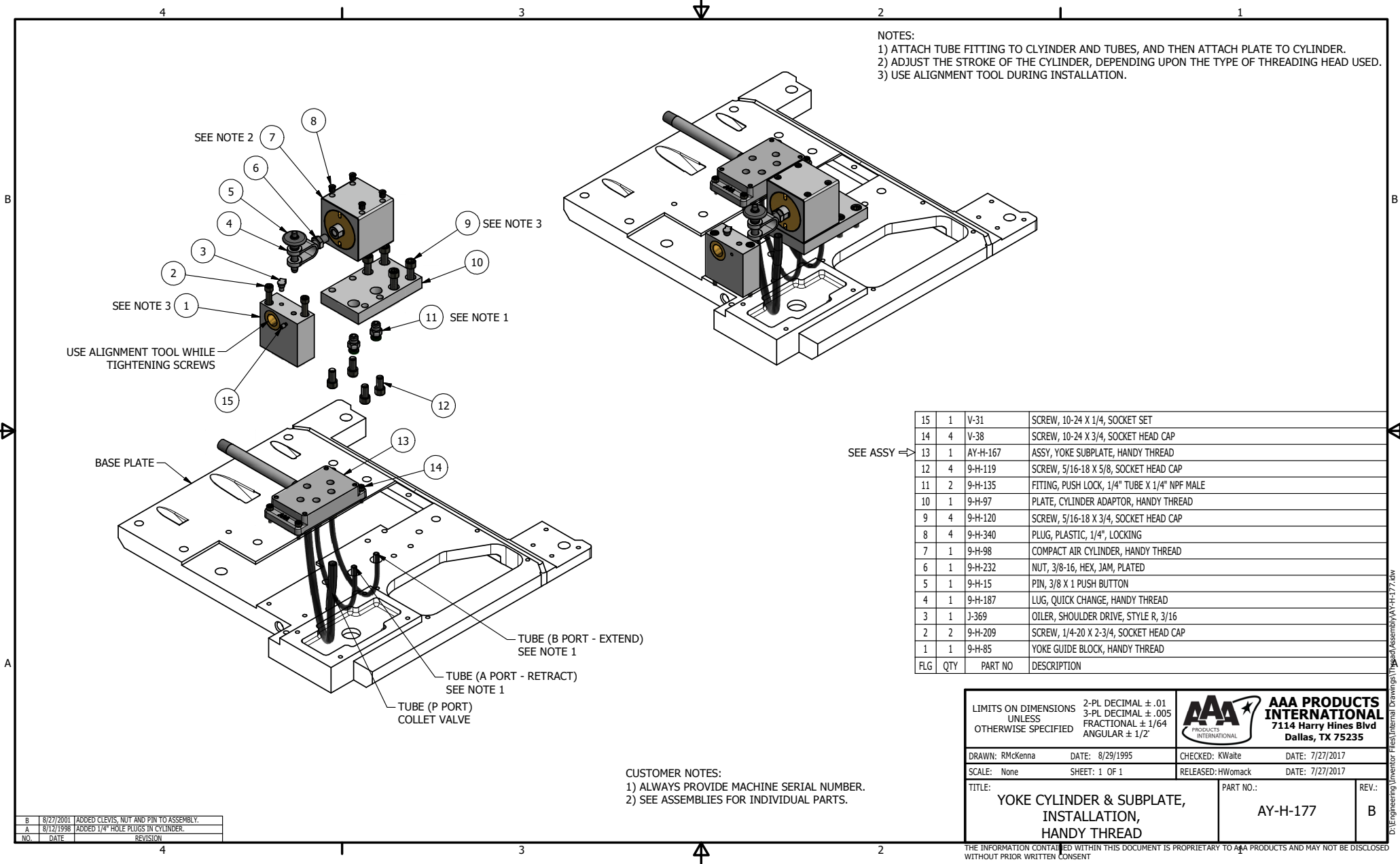
NOTES:
1) GREASE SWITCH BAR PIVOT POINTS.

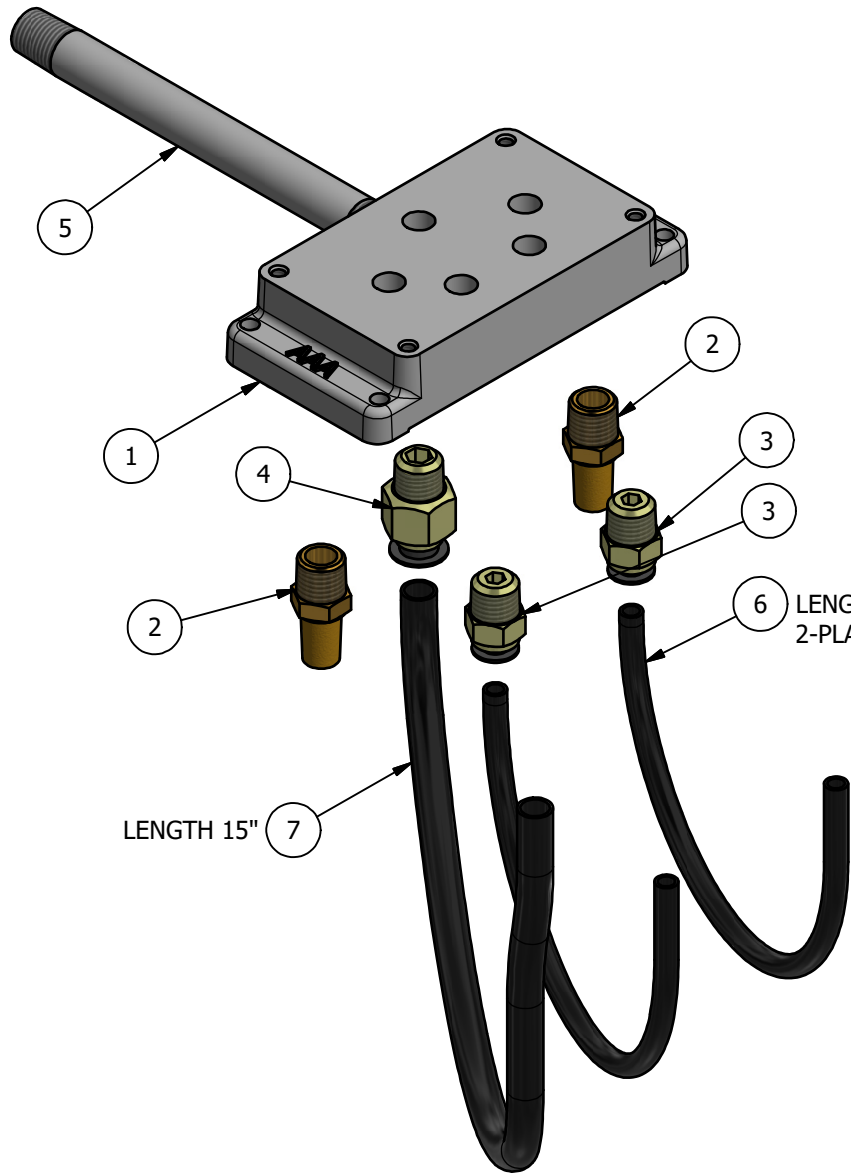
| | | |
|-----|--------|--------------------------|
| A | 1/5/01 | ADDED 9-H-303 ROLL PINS. |
| NO. | DATE | REVISION |

| | | | | | |
|---|--|--|--|--|--|
| LIMITS ON DIMENSIONS UNLESS OTHERWISE SPECIFIED | | 2-PL DECIMAL ± .01 3-PL DECIMAL ± .005 FRACTIONAL ± 1/64 ANGULAR ± 1/2° | |  AAA PRODUCTS INTERNATIONAL 7114 Harry Hines Blvd Dallas, TX 75235 | |
| DRAWN: RMcKenna | | DATE: 8/10/1995 | | CHECKED: KWaitte DATE: 3/13/2017 | |
| SCALE: None | | SHEET: 1 OF 1 | | RELEASED: HWomack DATE: 3/13/2017 | |
| TITLE: ASSY, SWITCH PLATE, HANDY THREAD | | | | PART NO.: AY-H-160 | |
| | | | | REV.: A | |

THE INFORMATION CONTAINED WITHIN THIS DOCUMENT IS PROPRIETARY TO AAA PRODUCTS AND MAY NOT BE DISCLOSED WITHOUT PRIOR WRITTEN CONSENT




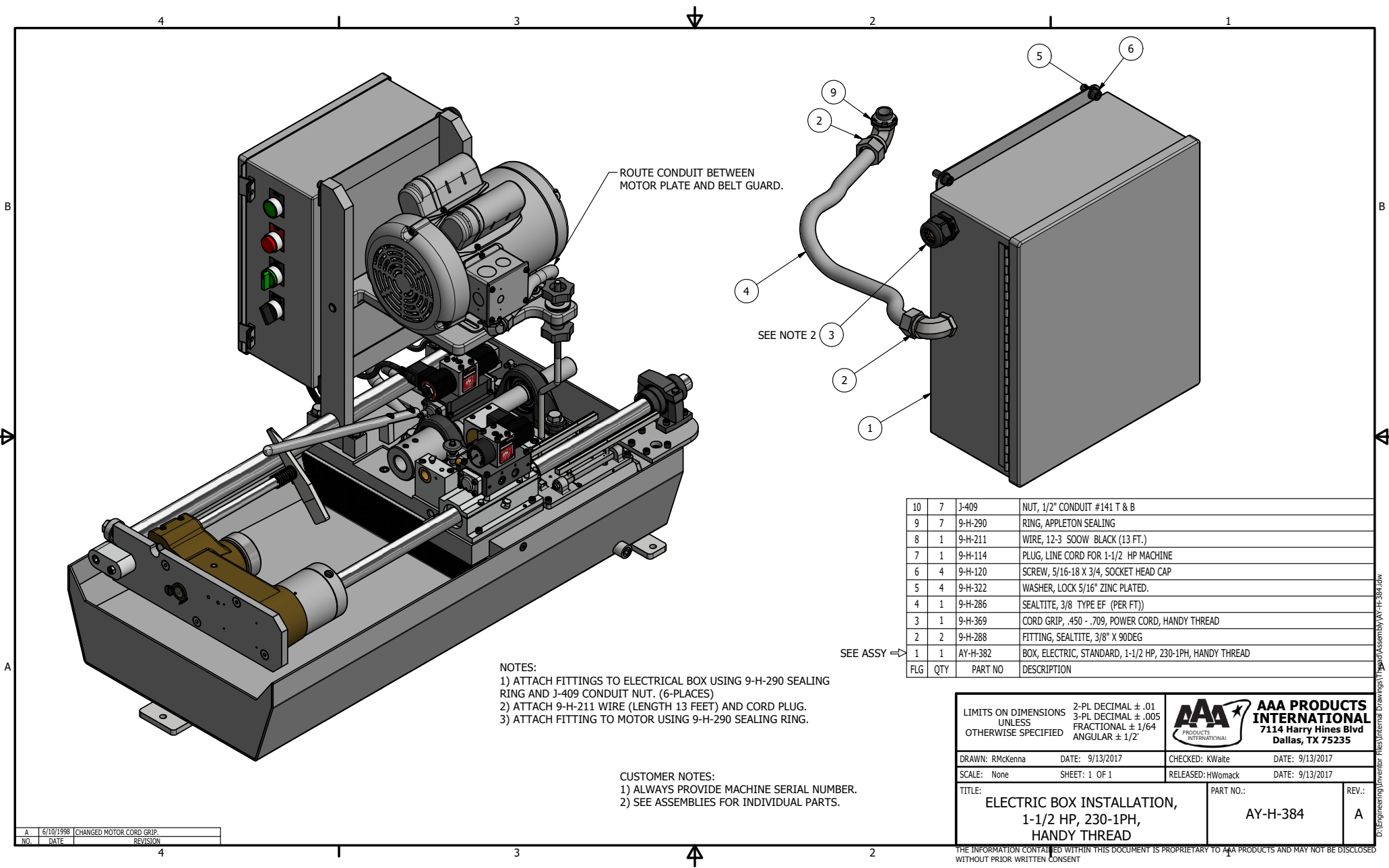


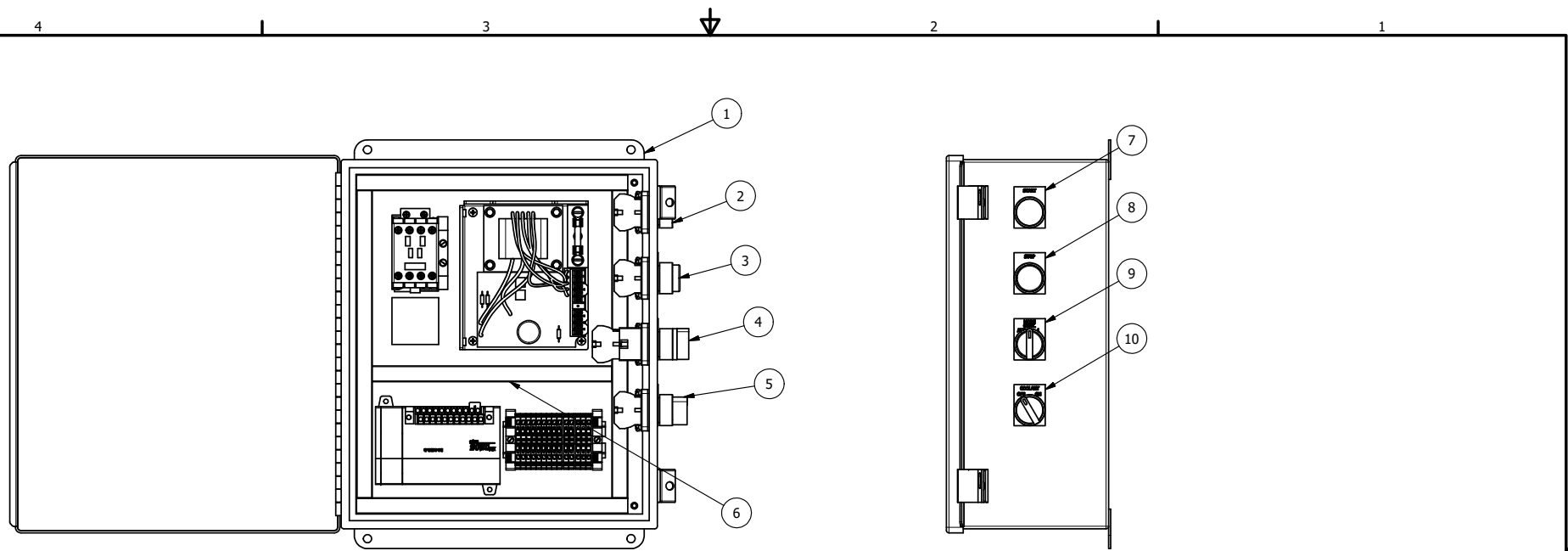


NOTES:
1) USE PIPE DOPE DURING INSTALLATION OF FITTINGS AND NIPPLE.

| | | | |
|-----|-----|---------|--|
| 7 | 1 | 9-H-33 | TUBING, 3\8" BLACK POLY-FLO |
| 6 | 2 | 9-H-34 | TUBING, 1\4" BLACK POLY-FLO |
| 5 | 1 | 9-H-199 | NIPPLE, 1\4" X 5-1\2" PLATED |
| 4 | 1 | 9-H-28 | FITTING, 3\8" PUSH LOCK TUBE X 1\4" MALE NPT |
| 3 | 2 | 9-H-29 | FITTING, 1\4" PUSH LOCK TUBE X 1\4" MALE NPT |
| 2 | 2 | 9-H-136 | MUFFLER, 1\4" BRONZE MFG. # BM-2 |
| 1 | 1 | 9-H-171 | MODIFIED SUBPLATE SP2-1N, HANDY THREAD |
| FLG | QTY | PART NO | DESCRIPTION |

| | | | | | |
|---|--|--|--|--|--|
| LIMITS ON DIMENSIONS UNLESS OTHERWISE SPECIFIED | | 2-PL DECIMAL ± .01 3-PL DECIMAL ± .005 FRACTIONAL ± 1/64 ANGULAR ± 1/2° | |  AAA PRODUCTS INTERNATIONAL 7114 Harry Hines Blvd Dallas, TX 75235 | |
| DRAWN: RMcKenna | | DATE: 8/15/1995 | | CHECKED: KWaitte DATE: 3/13/2017 | |
| SCALE: None | | SHEET: 1 OF 1 | | RELEASED: HWomack DATE: 3/13/2017 | |
| TITLE: ASSY, YOKE SUBPLATE, HANDY THREAD | | | | PART NO.: AY-H-167 | |
| | | | | REV.: | |





SEE ASSY ⇒

| | | | |
|-----|-----|---------|---|
| 10 | 1 | 9-H-267 | LEGEND PLATE, COOLANT, HANDY THREAD |
| 9 | 1 | 9-H-268 | LEGEND PLATE, MODE, HANDY THREAD |
| 8 | 1 | 9-H-269 | LEGEND PLATE, STOP, HANDY THREAD |
| 7 | 1 | 9-H-270 | LEGEND PLATE, START, HANDY THREAD |
| 5 | 1 | 9-H-259 | SWITCH, COOLANT 2-POSITION SELECTOR |
| 4 | 1 | 9-H-348 | SWITCH, 2 POSITION LIGHT SELECTOR WITH LED BULB |
| 3 | 1 | 9-H-261 | SWITCH, RED STOP W/ N.C. CONTACT |
| 2 | 1 | 9-H-262 | SWITCH, GREEN START BUTTON |
| 1 | 1 | 9-H-248 | ENCLOSURE, ELECTRICAL, HANDY THREAD |
| FLG | QTY | PART NO | DESCRIPTION |

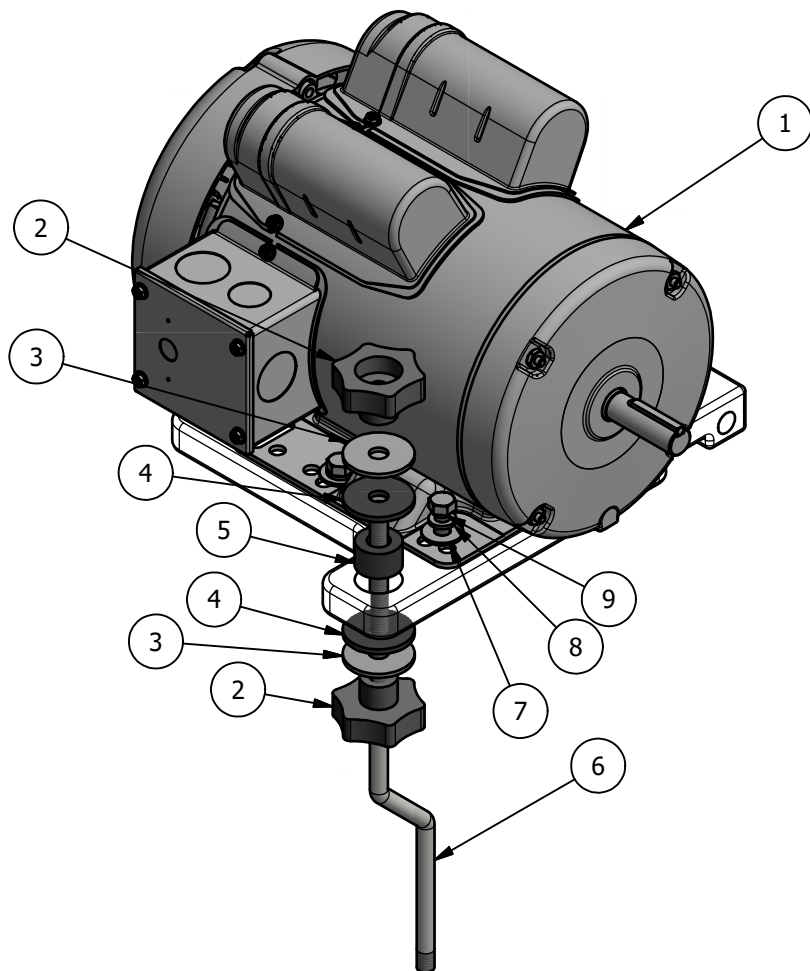
| | | |
|-----|------------|--|
| F | 7/12/2017 | ADDED 9-H-182 TO ASSEMBLY, CHNGD TITLE. |
| E | 10/18/2006 | MADE SWITCHES AS SINGLE ASSEMBLIES, CHANGED TO AUTOMATION DIRECT. H-192 & UP. |
| D | 3/13/2006 | RMVD PANEL DETAIL, CREATED STD BOX |
| C | 11/30/2001 | CHNG MODE FRM 3 POS, RMVD CONT |
| B | 5/31/2000 | ADDED 230VAC-3PH NOTE, UPD DRW # 1N NOTES |
| A | 7/1/1998 | RMV AUX CONTACT, MODIFIED SWITCH SPACING |
| NO. | DATE | REVISION |

CUSTOMER NOTES:
1) ALWAYS PROVIDE MACHINE SERIAL NUMBER.
2) SEE ASSEMBLIES FOR INDIVIDUAL PARTS.

| | | | |
|---|-----------------|---|--|
| LIMITS ON DIMENSIONS UNLESS OTHERWISE SPECIFIED | | 2-PL DECIMAL $\pm .01$ 3-PL DECIMAL $\pm .005$ FRACTIONAL $\pm 1/64$ ANGULAR $\pm 1/2^\circ$ | AAA PRODUCTS INTERNATIONAL 7114 Harry Hines Blvd Dallas, TX 75235 |
| DRAWN: RMckenna | DATE: 9/13/2017 | CHECKED: KWalte | DATE: 9/13/2017 |
| SCALE: None | SHEET: 1 OF 1 | RELEASED: HWomack | DATE: 9/13/2017 |
| TITLE: BOX, ELECTRIC, STANDARD, 1-1/2 HP, 230-1PH, HANDY THREAD | | PART NO.: AY-H-382 | REV.: F |

THE INFORMATION CONTAINED WITHIN THIS DOCUMENT IS PROPRIETARY TO AAA PRODUCTS AND MAY NOT BE DISCLOSED WITHOUT PRIOR WRITTEN CONSENT

D:\Engineering\Inventory Files\Internal Drawings\1\Head Electric\AY-H-382.dwg



| | | | |
|-----|-----|---------|--|
| 9 | 4 | 9-H-205 | BOLT, 5/16-18 X 3/4, HEX HEAD, PLATED |
| 8 | 4 | 9-H-322 | WASHER, LOCK 5/16" ZINC PLATED. |
| 7 | 4 | 9-H-206 | WASHER, 5/16" FLAT PLATED |
| 6 | 1 | 9-H-93 | ROD, MOTOR MOUNT SUPPORT, HANDY THREAD |
| 5 | 1 | 9-H-26 | BUSHING, RUBBER FOR MOTOR |
| 4 | 2 | 9-H-311 | WASHER, NEOPRENE RUBBER, 1-1/2 X 3/8 X 1/8, SEE MSB2 |
| 3 | 2 | 9-H-37 | WASHER, FENDER 3/8 X 1 1/2 |
| 2 | 2 | 9-H-55 | KNOB, 3/8-16 |
| 1 | 1 | 9-H-73 | MOTOR, 1-1/2 HP 120/240 V TEFC 1 PHASE 1725 RPM |
| FLG | QTY | PART NO | DESCRIPTION |

LIMITS ON DIMENSIONS
UNLESS
OTHERWISE SPECIFIED

2-PL DECIMAL $\pm .01$
3-PL DECIMAL $\pm .005$
FRACTIONAL $\pm 1/64$
ANGULAR $\pm 1/2^\circ$



**AAA PRODUCTS
INTERNATIONAL**
7114 Harry Hines Blvd
Dallas, TX 75235

DRAWN: RMcKenna

DATE: 7/6/2017

CHECKED: KWaitte

DATE: 7/6/2017

SCALE: None

SHEET: 1 OF 1

RELEASED: HWomack

DATE: 7/6/2017

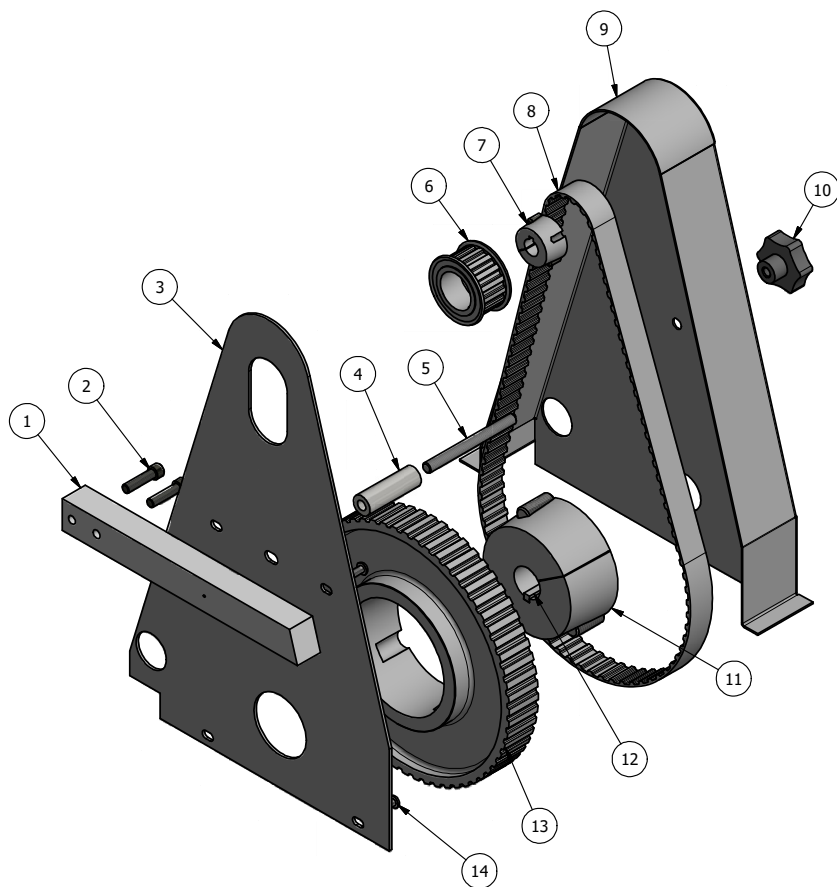
TITLE:

**MOTOR INSTALLATION,
1-1/2 HP, 120-240/60, 1725 RPM,
HANDY THREAD**

PART NO.:

AY-H-184

REV.:




| | | | | |
|--------------|-----|---|------------|--|
| SEE NOTE 3 ⇒ | 14 | 4 | 9-H-47 | SCREW, 1/4-20 X 1/2, BUTTON HEAD SOCKET CAP |
| | 13 | 1 | 9-H-221-60 | PULLEY, TAPER LOCK, H100, 60 PITCH, 9.549 PD, HANDY THREAD |
| SEE NOTE 3 ⇒ | 12 | 1 | 9-H-10 | KEY, 1/4" X 2" |
| | 11 | 1 | 9-H-224 | BUSHING, TAPER LOCK, #3020X1-3/16, |
| | 10 | 1 | 9-H-55 | KNOB, 3/8-16 |
| | 9 | 1 | 9-H-65 | GUARD, BELT, HANDY THREAD |
| SEE NOTE 3 ⇒ | 8 | 1 | 445H100 | BELT, SYNCHRONOUS, TIMING, H (.500) PITCH, 89 TEETH, 445H100, HANDY THREAD |
| SEE NOTE 3 ⇒ | 7 | 1 | 9-H-223 | BUSHING, TAPER LOCK, #1108X5/8, HANDY THREAD |
| SEE NOTE 3 ⇒ | 6 | 1 | 9-H-221-14 | PULLEY, TAPER LOCK, H100, 14 PITCH, 2.228 PD, HANDY THREAD |
| | 5 | 1 | 9-H-357 | STUD, BELT GUARD, ATTACHMENT, HANDY THREAD |
| | 4 | 1 | 9-H-356 | SPACER, BELT GUARD, ATTACHMENT, HANDY THREAD |
| | 3 | 1 | 9-H-66 | PLATE, BACK, BELT GUARD, HANDY THREAD |
| | 2 | 2 | V-402 | SCREW, 5/16-18 X 1-1/4, SOCKET HEAD CAP |
| | 1 | 1 | 9-H-96 | BAR, BACK MOUNTING, GUARD, HANDY THREAD |
| FLG | QTY | | PART NO | DESCRIPTION |

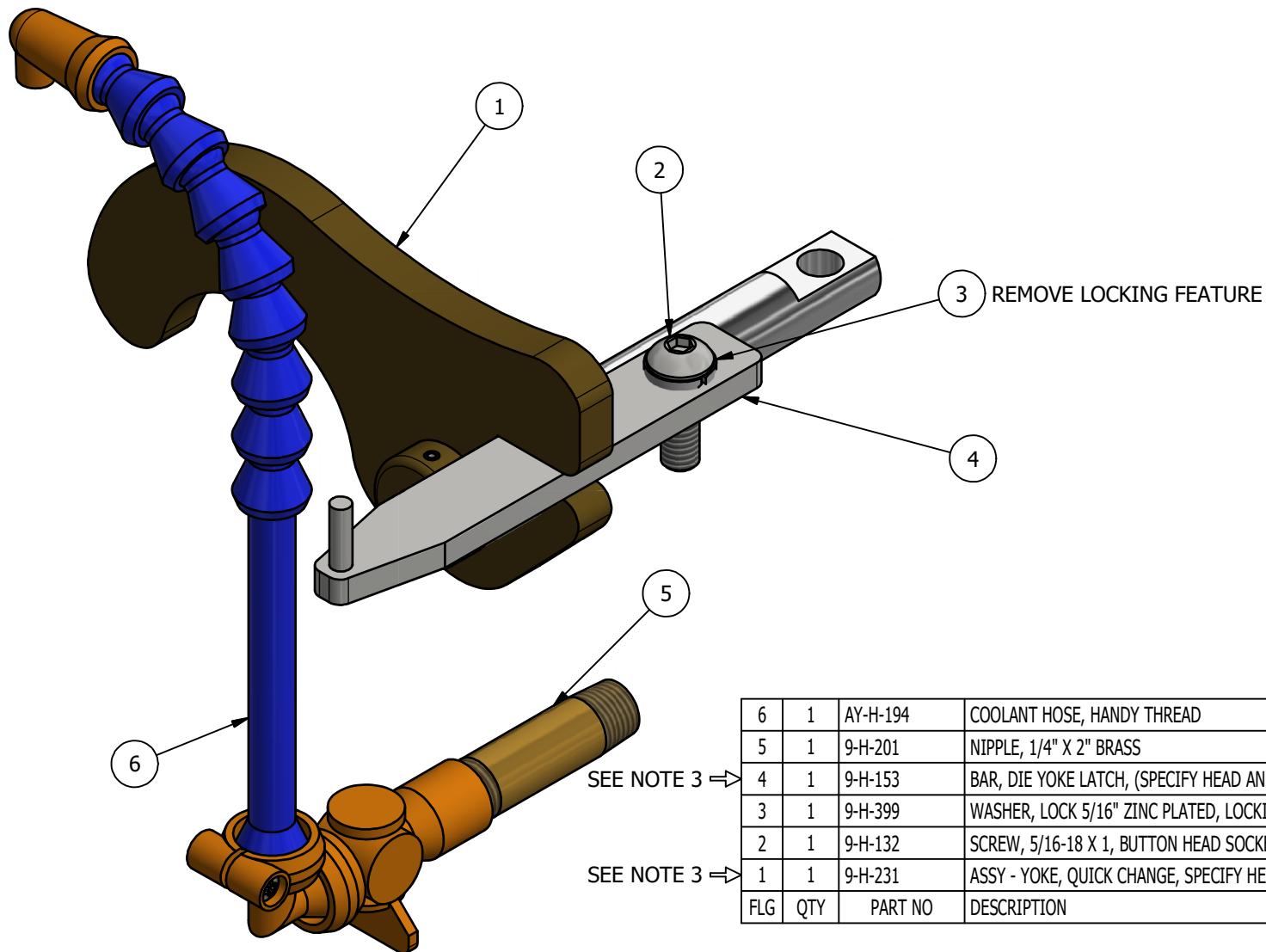
CUSTOMER NOTES:

- 1) ALWAYS PROVIDE MACHINE SERIAL NUMBER.
- 2) SEE ASSEMBLIES FOR INDIVIDUAL PARTS.
- 3) THESE PARTS ARE MACHINE SPECIFIC AND MUST MATCH THE SERIAL NUMBER OF THE MACHINE. PLEASE CONSULT FACTORY PRIOR ORDER PARTS.

| | | |
|-----|-----------|-----------------------------------|
| C | 9/11/2017 | ADDED RATIO TO PART NUMBER |
| B | 3/19/2007 | CHANGED GUARD SPACER TO A 2-PIECE |
| A | 7/1/1998 | MODIFIED SWITCH SPACING |
| NO. | DATE | REVISION |

| | | | | | |
|---|--|--|--|--|--|
| LIMITS ON DIMENSIONS UNLESS OTHERWISE SPECIFIED | | 2-PL DECIMAL ± .01 3-PL DECIMAL ± .005 FRACTIONAL ± 1/64 ANGULAR ± 1/2° | |  AAA PRODUCTS INTERNATIONAL 7114 Harry Hines Blvd Dallas, TX 75235 | |
| DRAWN: RMckenna | | DATE: 7/7/2017 | | CHECKED: KWaitte | |
| SCALE: None | | SHEET: 1 OF 1 | | DATE: 7/7/2017 | |
| TITLE: BELT INSTALLATION, 1-1/2 HP, 0.23 RATIO, 445H100 BELT, HANDY THREAD | | | | PART NO.: AY-H-219-023 | |
| | | | | REV.: C | |

THE INFORMATION CONTAINED WITHIN THIS DOCUMENT IS PROPRIETARY TO AAA PRODUCTS AND MAY NOT BE DISCLOSED WITHOUT PRIOR WRITTEN CONSENT



SEE NOTE 3 ⇒

SEE NOTE 3 ⇒

| 6 | 1 | AY-H-194 | COOLANT HOSE, HANDY THREAD |
|-----|-----|----------|---|
| 5 | 1 | 9-H-201 | NIPPLE, 1/4" X 2" BRASS |
| 4 | 1 | 9-H-153 | BAR, DIE YOKE LATCH, (SPECIFY HEAD AND ADAPTOR), HANDY THREAD |
| 3 | 1 | 9-H-399 | WASHER, LOCK 5/16" ZINC PLATED, LOCKING FEATURE REMOVED |
| 2 | 1 | 9-H-132 | SCREW, 5/16-18 X 1, BUTTON HEAD SOCKET CAP |
| 1 | 1 | 9-H-231 | ASSY - YOKE, QUICK CHANGE, SPECIFY HEAD, HANDY THREAD |
| FLG | QTY | PART NO | DESCRIPTION |

CUSTOMER NOTES:

- 1) ALWAYS PROVIDE MACHINE SERIAL NUMBER.
- 2) SEE ASSEMBLIES FOR INDIVIDUAL PARTS.
- 3) THESE PARTS ARE MACHINE SPECIFIC AND MUST MATCH THE SERIAL NUMBER OF THE MACHINE. PLEASE CONSULT FACTORY PRIOR ORDER PARTS.

| | | |
|-----|----------|--------------------------|
| A | 7/1/1998 | MODIFEID SWITCH SPACING. |
| NO. | DATE | REVISION |

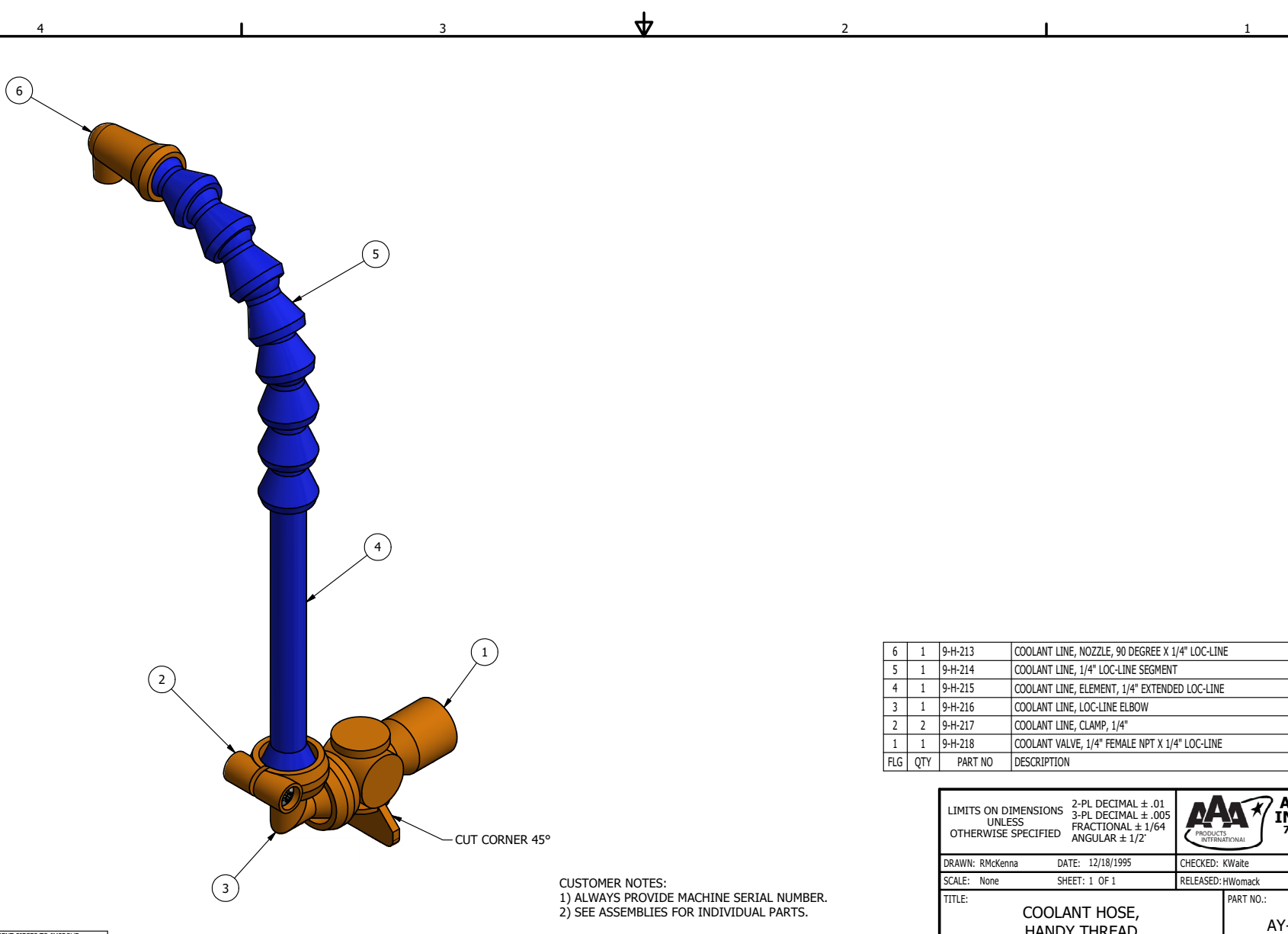
LIMITS ON DIMENSIONS
UNLESS
OTHERWISE SPECIFIED

2-PL DECIMAL $\pm .01$
3-PL DECIMAL $\pm .005$
FRACTIONAL $\pm 1/64$
ANGULAR $\pm 1/2^\circ$



**AAA PRODUCTS
INTERNATIONAL**
7114 Harry Hines Blvd
Dallas, TX 75235

| | | | |
|---|----------------|------------------------------|-------------------|
| DRAWN: RMckenna | DATE: 1/2/1995 | CHECKED: KWait | DATE: 1/29/1996 |
| SCALE: None | SHEET: 1 OF 1 | RELEASED: HWomack | DATE: 1/29/1996 |
| TITLE: YOKE & COOLANT INTSL, 1" DRIVE SHAFT, HANDY THREAD | | PART NO.: AY-H-228 | REV.: A |



CUSTOMER NOTES:
1) ALWAYS PROVIDE MACHINE SERIAL NUMBER.
2) SEE ASSEMBLIES FOR INDIVIDUAL PARTS.

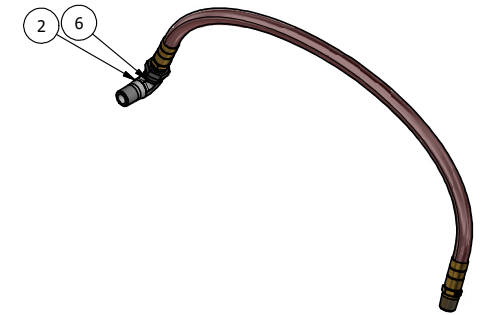
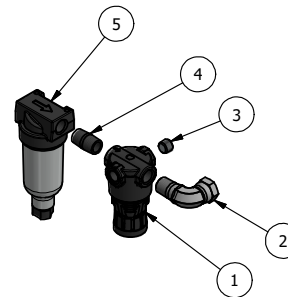
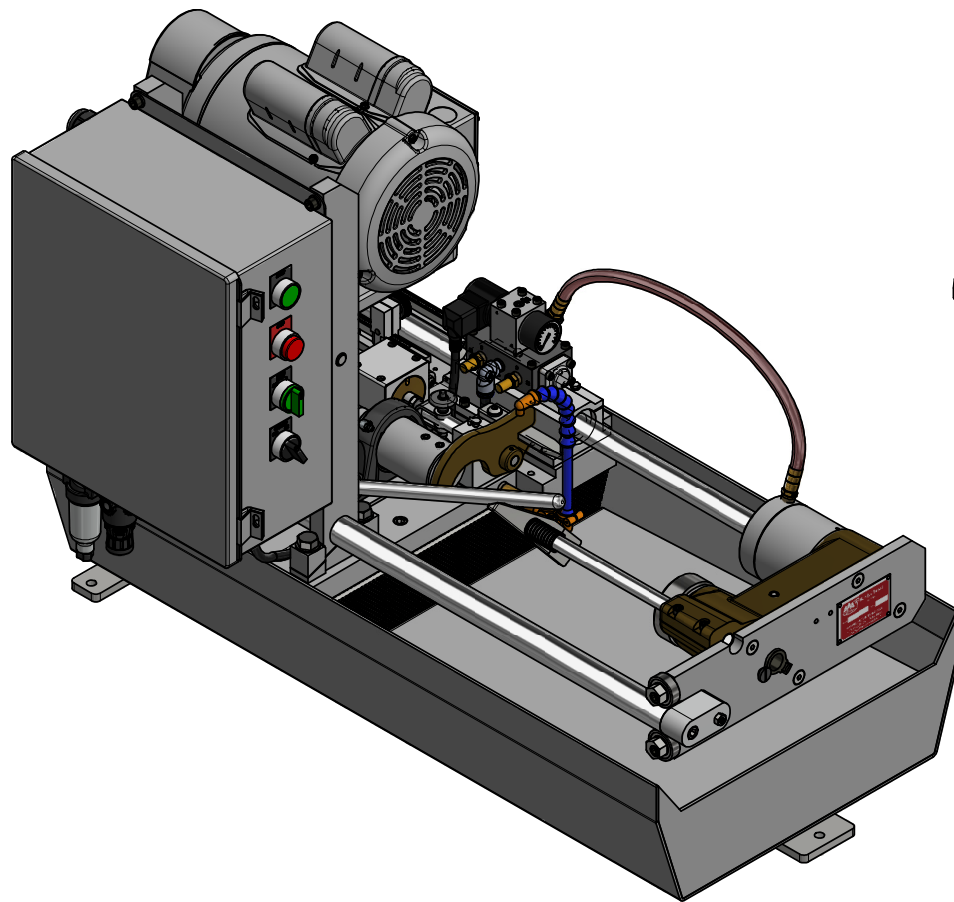
| | | | |
|-----|-----|---------|---|
| 6 | 1 | 9-H-213 | COOLANT LINE, NOZZLE, 90 DEGREE X 1/4" LOC-LINE |
| 5 | 1 | 9-H-214 | COOLANT LINE, 1/4" LOC-LINE SEGMENT |
| 4 | 1 | 9-H-215 | COOLANT LINE, ELEMENT, 1/4" EXTENDED LOC-LINE |
| 3 | 1 | 9-H-216 | COOLANT LINE, LOC-LINE ELBOW |
| 2 | 2 | 9-H-217 | COOLANT LINE, CLAMP, 1/4" |
| 1 | 1 | 9-H-218 | COOLANT VALVE, 1/4" FEMALE NPT X 1/4" LOC-LINE |
| FLG | QTY | PART NO | DESCRIPTION |

| | | | | |
|---|--|--|--|-------------------|
| LIMITS ON DIMENSIONS UNLESS OTHERWISE SPECIFIED | | 2-PL DECIMAL ± .01 3-PL DECIMAL ± .005 FRACTIONAL ± 1/64 ANGULAR ± 1/2° | AAA PRODUCTS INTERNATIONAL 7114 Harry Hines Blvd Dallas, TX 75235 | |
| DRAWN: RMckenna | | DATE: 12/18/1995 | | CHECKED: KWalte |
| SCALE: None | | SHEET: 1 OF 1 | | DATE: 3/13/2017 |
| TITLE: COOLANT HOSE, HANDY THREAD | | PART NO.: AY-H-194 | | REV.: A |

| | | |
|-----|---------|---|
| A | 7/31/98 | RMV 2 HOSE SEGMENT PIECES TO IMPROVE COOLANT DIRECTION. |
| NO. | DATE | REVISION |

THE INFORMATION CONTAINED WITHIN THIS DOCUMENT IS PROPRIETARY TO AAA PRODUCTS AND MAY NOT BE DISCLOSED WITHOUT PRIOR WRITTEN CONSENT


P:\Engineering\Inventor Files\Internal Drawings\Lead Assembly\AY-H-194.dwg



| | | | |
|-----|-----|---------|--|
| 6 | 1 | 9-H-370 | HOSE, CHUCK CYLINDER, HANDY THREAD |
| 5 | 1 | 9-H-76 | FILTER, AIR INLET |
| 4 | 1 | 9-H-200 | NIPPLE, 1/4" HEX BRASS |
| 3 | 1 | V-19 | PLUG, SOCKET PIPE 1/8" NPT (#601-3 PITTSBURG PLUG PART #.) |
| 2 | 2 | 9-H-35 | FITTING, 90 DEGREE SWIVEL, 1/4" NPT MALE X 1/4" NPT FEMALE |
| 1 | 1 | 9-H-74 | REGULATOR |
| FLG | QTY | PART NO | DESCRIPTION |

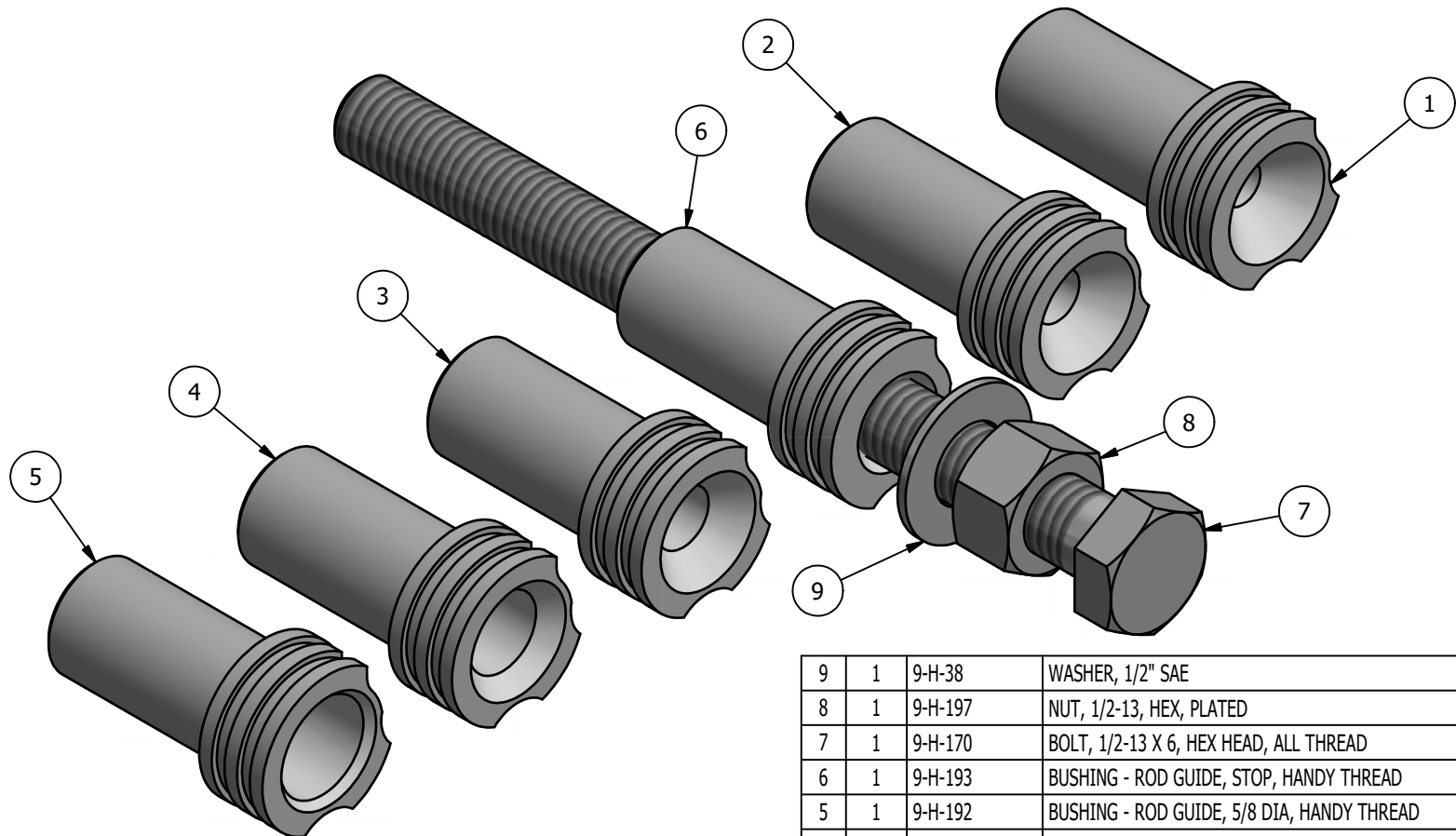
CUSTOMER NOTES:
 1) ALWAYS PROVIDE MACHINE SERIAL NUMBER.
 2) SEE ASSEMBLIES FOR INDIVIDUAL PARTS.

| | | |
|-----|------------|-----------------------------------|
| B | 12/03/2001 | CHNGD ITEM 3 FROM 9-H-35 STRAIGHT |
| A | 7/1/1998 | MODIFIED SWITCH SPACING |
| NO. | DATE | REVISION |

| | | | | | |
|--|----------------|---|-----------------|--|-------------------|
| LIMITS ON DIMENSIONS UNLESS OTHERWISE SPECIFIED | | 2-PL DECIMAL $\pm .01$ 3-PL DECIMAL $\pm .005$ FRACTIONAL $\pm 1/64$ ANGULAR $\pm 1/2^\circ$ | |  AAA PRODUCTS INTERNATIONAL 7114 Harry Hines Blvd Dallas, TX 75235 | |
| DRAWN: RMckenna | DATE: 1/2/1995 | CHECKED: HWomack | DATE: 1/29/1996 | | |
| SCALE: None | SHEET: 1 OF 1 | RELEASED: KWaite | DATE: 1/29/1996 | | |
| TITLE: AIR LINE INSTALLATION, HANDY THREAD | | | | PART NO.: AY-H-226 | REV.: B |

THE INFORMATION CONTAINED WITHIN THIS DOCUMENT IS PROPRIETARY TO AAA PRODUCTS AND MAY NOT BE DISCLOSED WITHOUT PRIOR WRITTEN CONSENT

C:\Engineering\Inventor Files\Internal Drawings\Head Assembly\AY-H-226.dwg



| | | | |
|-----|-----|---------|---|
| 9 | 1 | 9-H-38 | WASHER, 1/2" SAE |
| 8 | 1 | 9-H-197 | NUT, 1/2-13, HEX, PLATED |
| 7 | 1 | 9-H-170 | BOLT, 1/2-13 X 6, HEX HEAD, ALL THREAD |
| 6 | 1 | 9-H-193 | BUSHING - ROD GUIDE, STOP, HANDY THREAD |
| 5 | 1 | 9-H-192 | BUSHING - ROD GUIDE, 5/8 DIA, HANDY THREAD |
| 4 | 1 | 9-H-191 | BUSHING - ROD GUIDE, 1/2 DIA, HANDY THREAD |
| 3 | 1 | 9-H-190 | BUSHING - ROD GUIDE, 3/8 DIA, HANDY THREAD |
| 2 | 1 | 9-H-189 | BUSHING - ROD GUIDE, 5/16 DIA, HANDY THREAD |
| 1 | 1 | 9-H-188 | BUSHING - ROD GUIDE, 1/4 DIA, HANDY THREAD |
| FLG | QTY | PART NO | DESCRIPTION |

LIMITS ON DIMENSIONS
UNLESS
OTHERWISE SPECIFIED

2-PL DECIMAL $\pm .01$
3-PL DECIMAL $\pm .005$
FRACTIONAL $\pm 1/64$
ANGULAR $\pm 1/2^\circ$



**AAA PRODUCTS
INTERNATIONAL**
7114 Harry Hines Blvd
Dallas, TX 75235

DRAWN: RMcKenna

DATE: 9/13/2017

CHECKED: KWaitte

DATE: 9/13/2017

SCALE: None

SHEET: 1 OF 1

RELEASED: HWomack

DATE: 9/13/2017

TITLE:

**KIT, BUSHING, ROD GUIDE,
HANDY THREAD**

PART NO.:

AY-H-GBK

REV.: