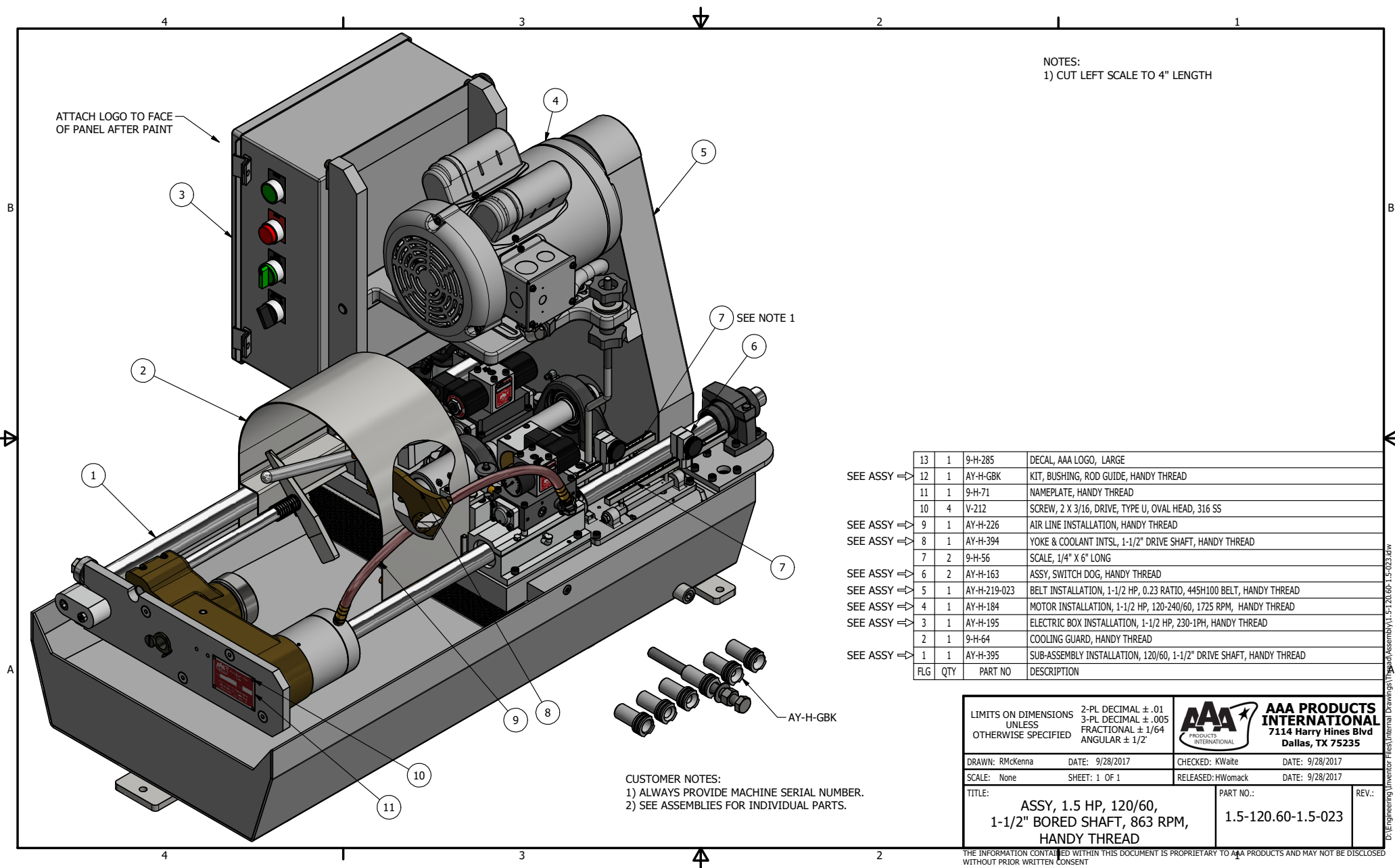


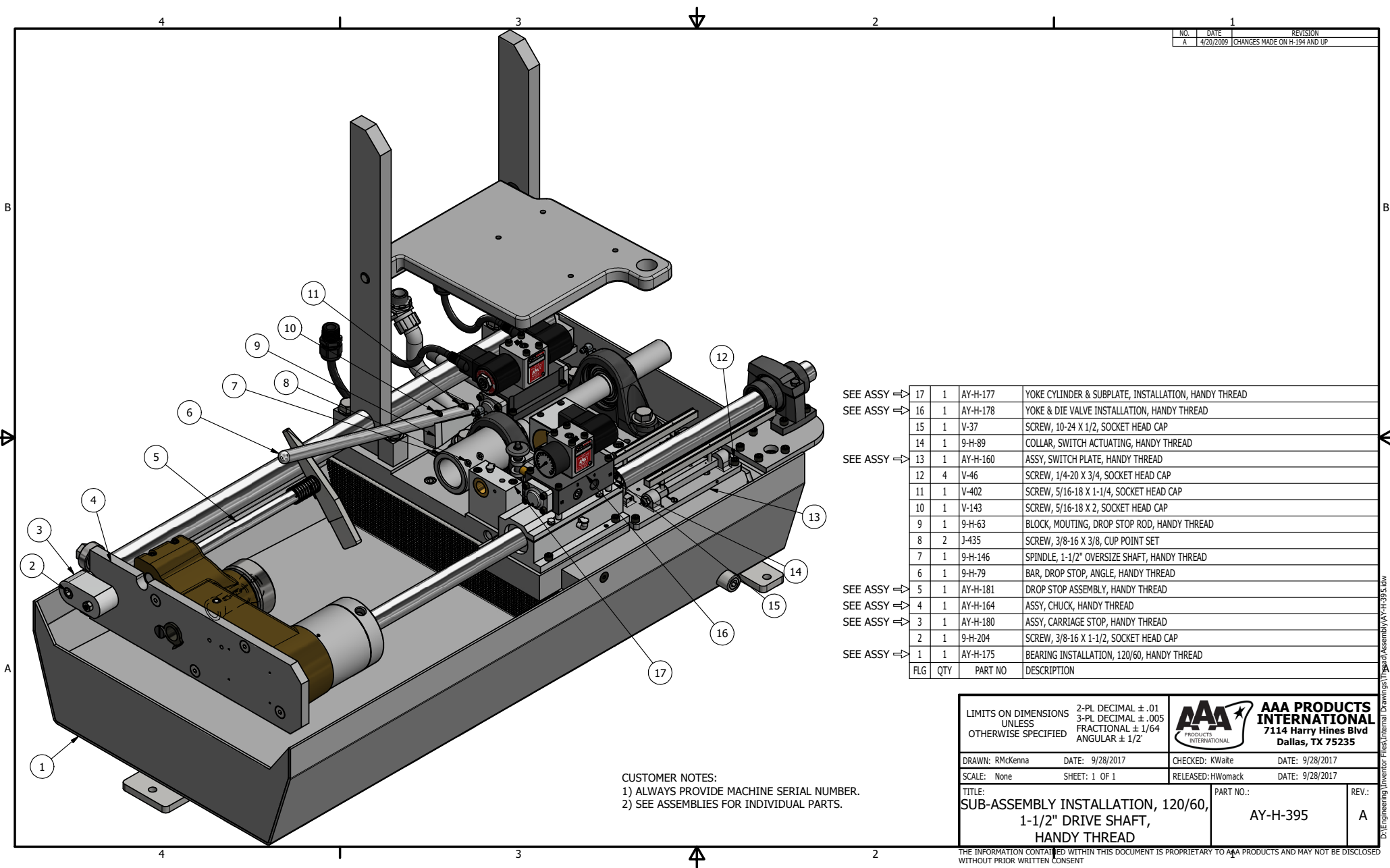
Handy Thread Parts

Associated Drawings

Specific parts may be customized and unique for each Handy-Thread manufactured. Machine serial numbers must be provided so ordered parts can be cross-referenced. Failure to provide a machine serial number may cause the incorrect ordering of parts and assemblies.

These drawings are for a generic machine using a pulley ratio of 0.23 which is approximately 400 rpm. Pulleys are changed to provide different machine rpms.



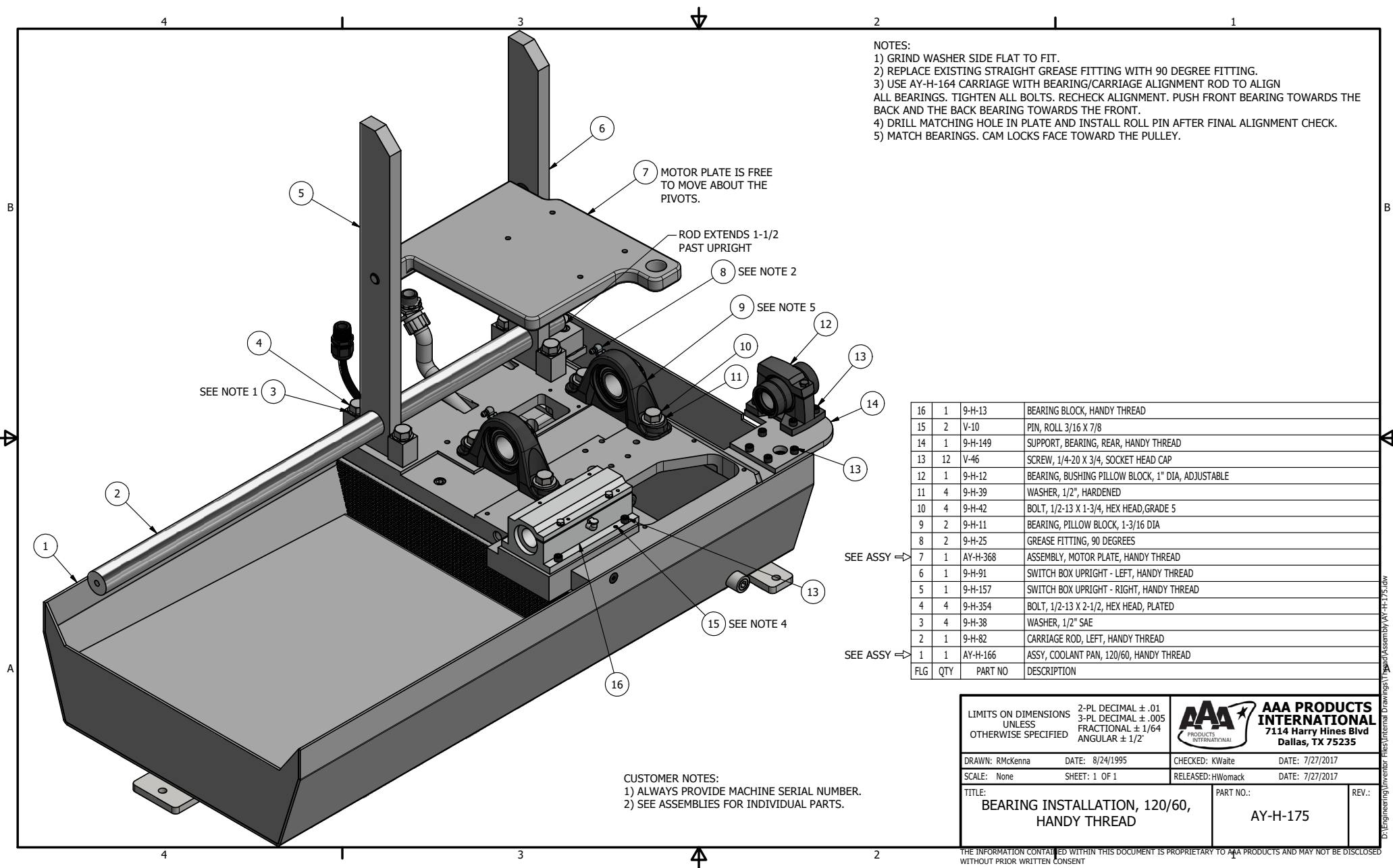


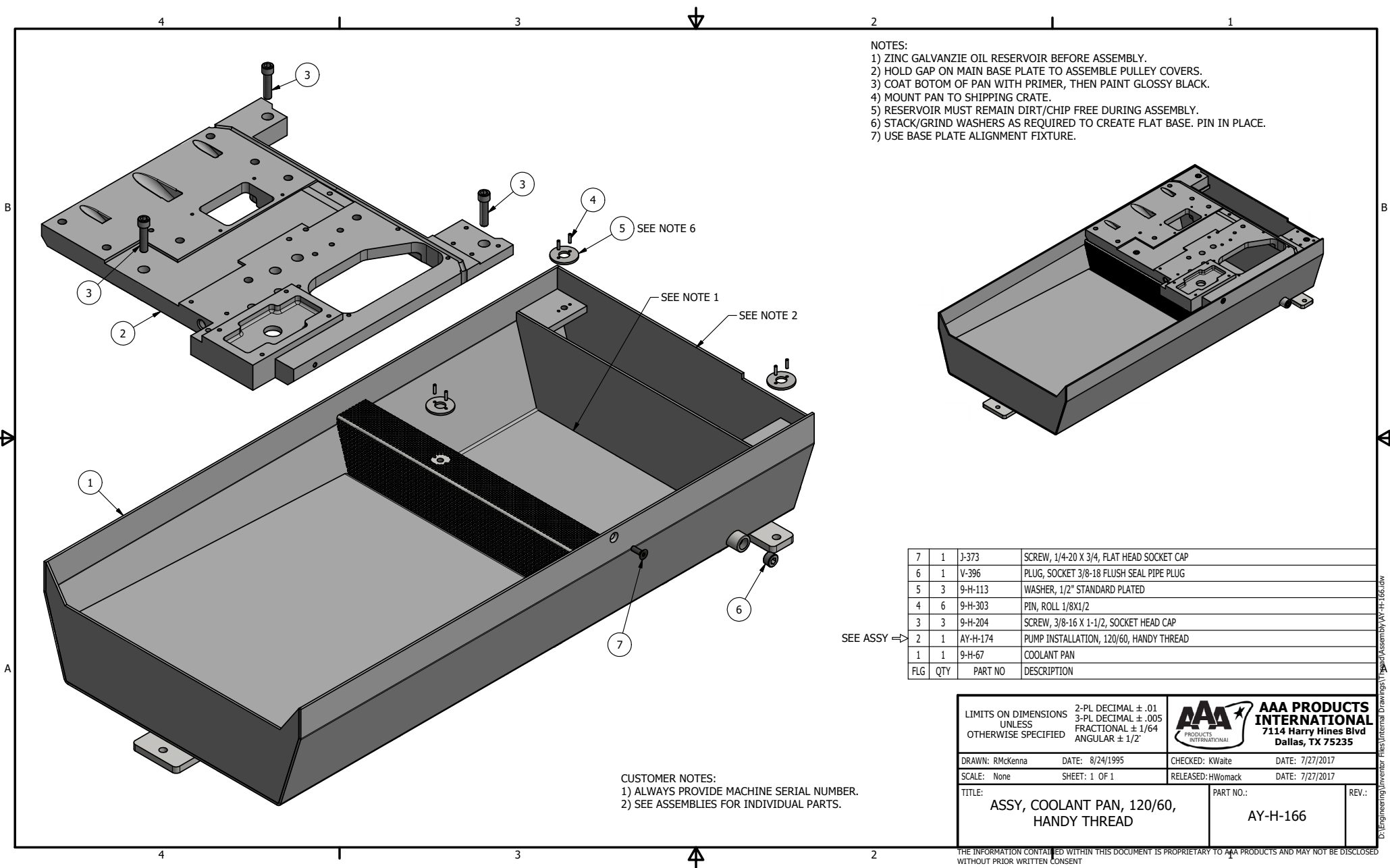
CUSTOMER NOTES:
1) ALWAYS PROVIDE MACHINE SERIAL NUMBER.
2) SEE ASSEMBLIES FOR INDIVIDUAL PARTS.

SEE ASSY ⇒	17	1	AY-H-177	YOKE CYLINDER & SUBPLATE, INSTALLATION, HANDY THREAD
SEE ASSY ⇒	16	1	AY-H-178	YOKE & DIE VALVE INSTALLATION, HANDY THREAD
	15	1	V-37	SCREW, 10-24 X 1/2, SOCKET HEAD CAP
	14	1	9-H-89	COLLAR, SWITCH ACTUATING, HANDY THREAD
SEE ASSY ⇒	13	1	AY-H-160	ASSY, SWITCH PLATE, HANDY THREAD
	12	4	V-46	SCREW, 1/4-20 X 3/4, SOCKET HEAD CAP
	11	1	V-402	SCREW, 5/16-18 X 1-1/4, SOCKET HEAD CAP
	10	1	V-143	SCREW, 5/16-18 X 2, SOCKET HEAD CAP
	9	1	9-H-63	BLOCK, MOUTING, DROP STOP ROD, HANDY THREAD
	8	2	J-435	SCREW, 3/8-16 X 3/8, CUP POINT SET
	7	1	9-H-146	SPINDLE, 1-1/2" OVERSIZE SHAFT, HANDY THREAD
	6	1	9-H-79	BAR, DROP STOP, ANGLE, HANDY THREAD
SEE ASSY ⇒	5	1	AY-H-181	DROP STOP ASSEMBLY, HANDY THREAD
SEE ASSY ⇒	4	1	AY-H-164	ASSY, CHUCK, HANDY THREAD
SEE ASSY ⇒	3	1	AY-H-180	ASSY, CARRIAGE STOP, HANDY THREAD
	2	1	9-H-204	SCREW, 3/8-16 X 1-1/2, SOCKET HEAD CAP
SEE ASSY ⇒	1	1	AY-H-175	BEARING INSTALLATION, 120/60, HANDY THREAD
FLG	QTY		PART NO	DESCRIPTION

LIMITS ON DIMENSIONS UNLESS OTHERWISE SPECIFIED		2-PL DECIMAL ± .01 3-PL DECIMAL ± .005 FRACTIONAL ± 1/64 ANGULAR ± 1/2°		AAA PRODUCTS INTERNATIONAL 7114 Harry Hines Blvd Dallas, TX 75235	
DRAWN: RMckenna	DATE: 9/28/2017	CHECKED: KWaitte	DATE: 9/28/2017		
SCALE: None	SHEET: 1 OF 1	RELEASED: HWomack	DATE: 9/28/2017		
TITLE: SUB-ASSEMBLY INSTALLATION, 120/60, 1-1/2" DRIVE SHAFT, HANDY THREAD				PART NO.: AY-H-395	REV.: A

THE INFORMATION CONTAINED WITHIN THIS DOCUMENT IS PROPRIETARY TO AAA PRODUCTS AND MAY NOT BE DISCLOSED WITHOUT PRIOR WRITTEN CONSENT






- NOTES:
- 1) ZINC GALVANZIE OIL RESERVOIR BEFORE ASSEMBLY.
 - 2) HOLD GAP ON MAIN BASE PLATE TO ASSEMBLE PULLEY COVERS.
 - 3) COAT BOTOM OF PAN WITH PRIMER, THEN PAINT GLOSSY BLACK.
 - 4) MOUNT PAN TO SHIPPING CRATE.
 - 5) RESERVOIR MUST REMAIN DIRT/CHIP FREE DURING ASSEMBLY.
 - 6) STACK/GRIND WASHERS AS REQUIRED TO CREATE FLAT BASE. PIN IN PLACE.
 - 7) USE BASE PLATE ALIGNMENT FIXTURE.

CUSTOMER NOTES:

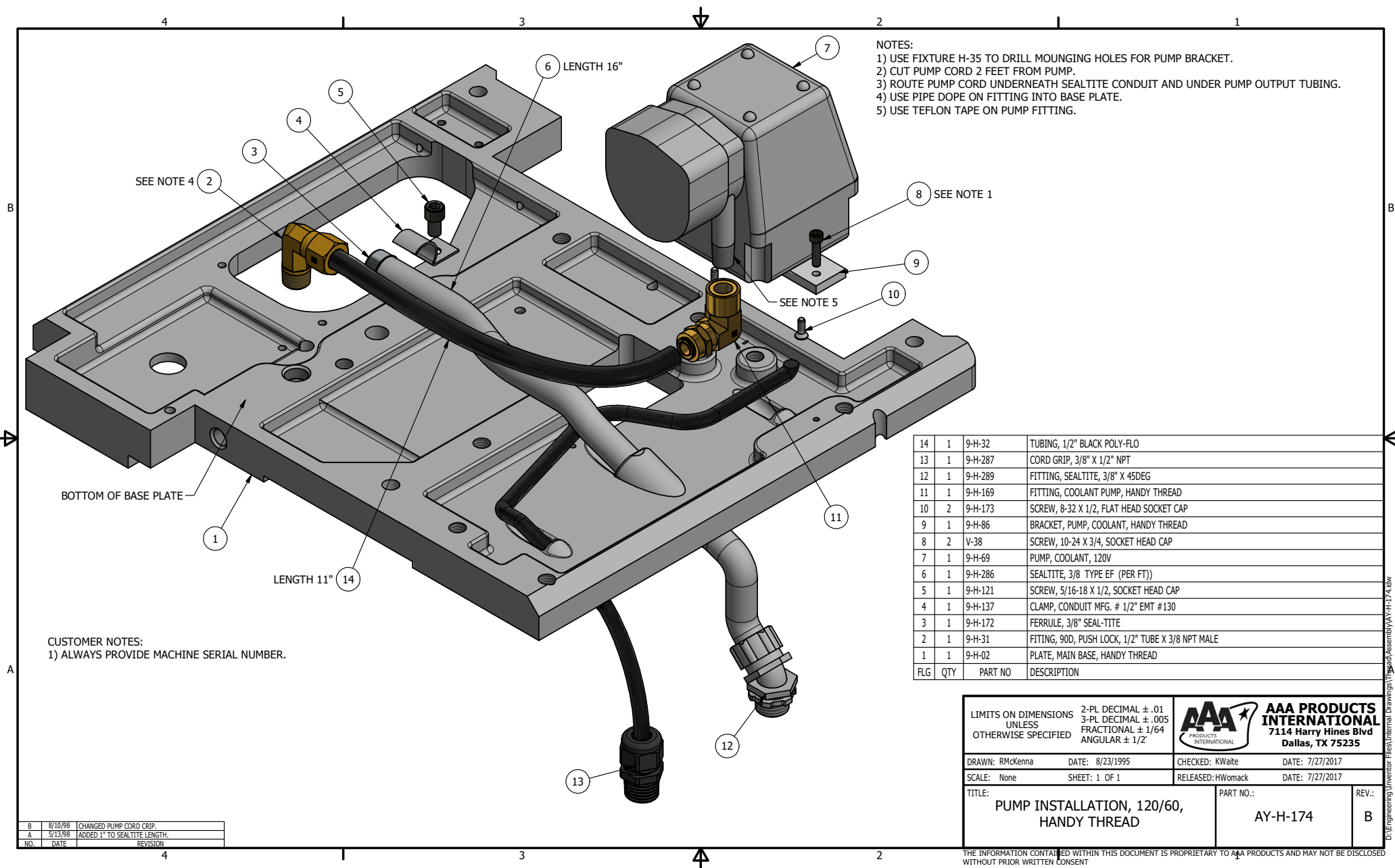
- 1) ALWAYS PROVIDE MACHINE SERIAL NUMBER.
- 2) SEE ASSEMBLIES FOR INDIVIDUAL PARTS.

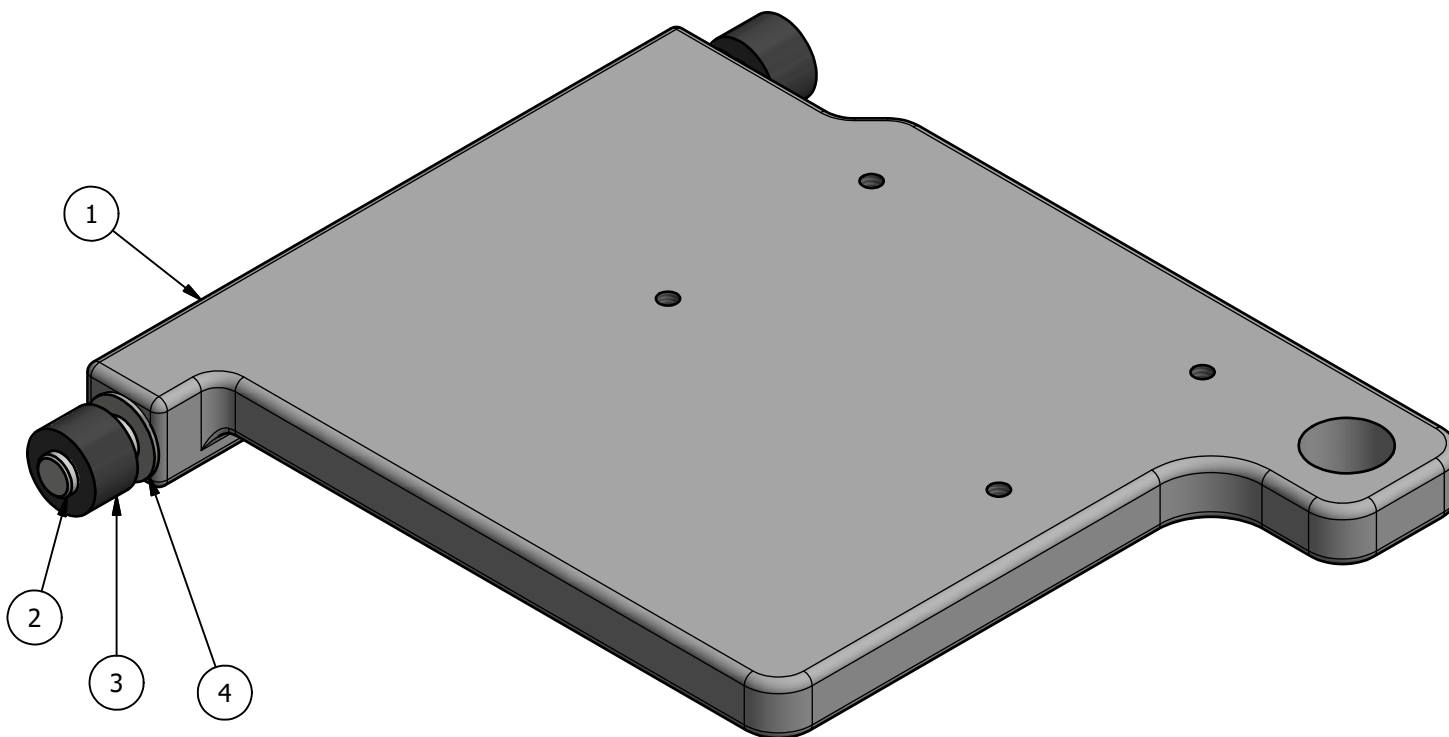
7	1	J-373	SCREW, 1/4-20 X 3/4, FLAT HEAD SOCKET CAP
6	1	V-396	PLUG, SOCKET 3/8-18 FLUSH SEAL PIPE PLUG
5	3	9-H-113	WASHER, 1/2" STANDARD PLATED
4	6	9-H-303	PIN, ROLL 1/8X1/2
3	3	9-H-204	SCREW, 3/8-16 X 1-1/2, SOCKET HEAD CAP
2	1	AY-H-174	PUMP INSTALLATION, 120/60, HANDY THREAD
1	1	9-H-67	COOLANT PAN
FLG	QTY	PART NO	DESCRIPTION

LIMITS ON DIMENSIONS UNLESS OTHERWISE SPECIFIED		2-PL DECIMAL ± .01 3-PL DECIMAL ± .005 FRACTIONAL ± 1/64 ANGULAR ± 1/2°		 AAA PRODUCTS INTERNATIONAL 7114 Harry Hines Blvd Dallas, TX 75235	
DRAWN: RMckenna		DATE: 8/24/1995		CHECKED: KWalte	
SCALE: None		SHEET: 1 OF 1		RELEASED: HWomack	
TITLE: ASSY, COOLANT PAN, 120/60, HANDY THREAD				PART NO.: AY-H-166	
				REV.:	

THE INFORMATION CONTAINED WITHIN THIS DOCUMENT IS PROPRIETARY TO AAA PRODUCTS AND MAY NOT BE DISCLOSED WITHOUT PRIOR WRITTEN CONSENT

D:\Engineering\Inventory Files\Internal Drawings\Lead Assembly\AY-H-166.dwg





4	2	9-H-38	WASHER, 1/2" SAE
3	2	9-H-26	BUSHING, RUBBER FOR MOTOR
2	2	9-H-115	PIN, 1/2 X 2-1/4 DOWEL
1	1	9-H-01	BASE - MOTOR MOUNT, HANDY THREAD
FLG	QTY	PART NO	DESCRIPTION

LIMITS ON DIMENSIONS
UNLESS
OTHERWISE SPECIFIED

2-PL DECIMAL $\pm .01$
3-PL DECIMAL $\pm .005$
FRACTIONAL $\pm 1/64$
ANGULAR $\pm 1/2^\circ$



**AAA PRODUCTS
INTERNATIONAL**
7114 Harry Hines Blvd
Dallas, TX 75235

DRAWN: RMckenna

DATE: 6/30/2017

CHECKED: KWait

DATE: 6/30/2017

SCALE: None

SHEET: 1 OF 1

RELEASED: HWomack

DATE: 6/30/2017

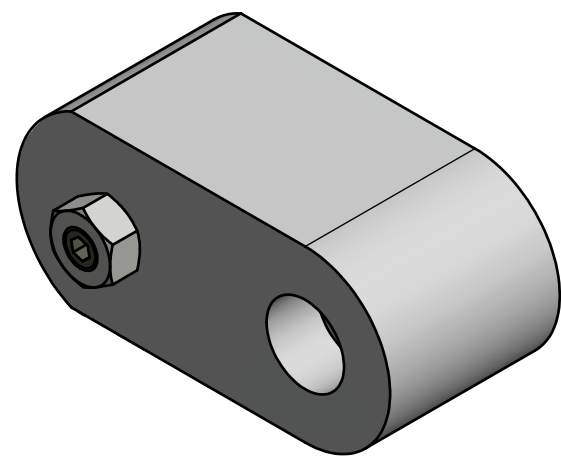
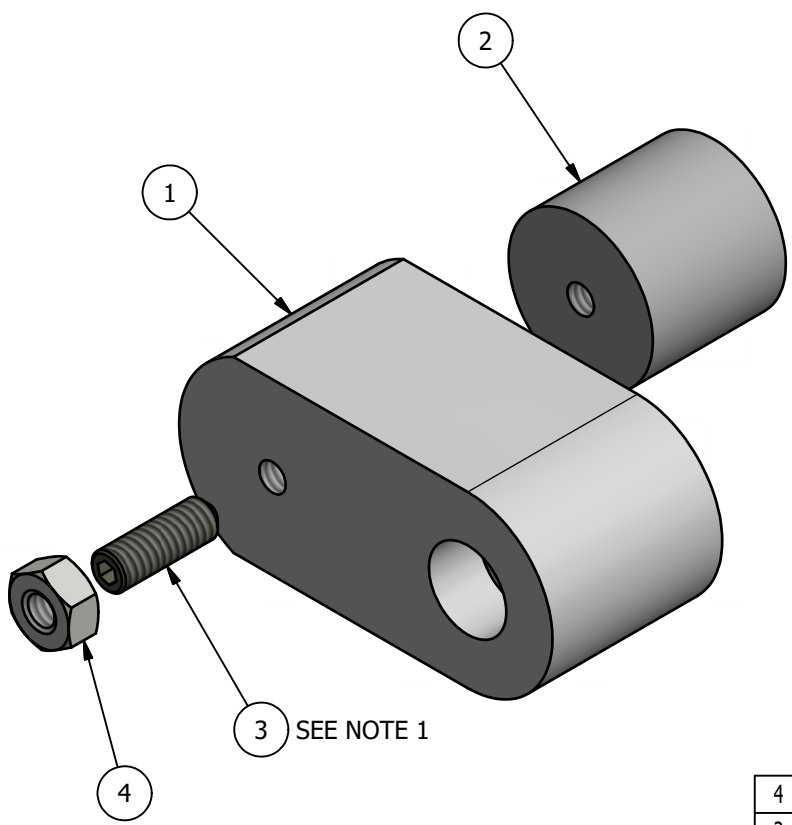
TITLE:

ASSEMBLY, MOTOR PLATE,
HANDY THREAD

PART NO.:


AY-H-368

REV.:

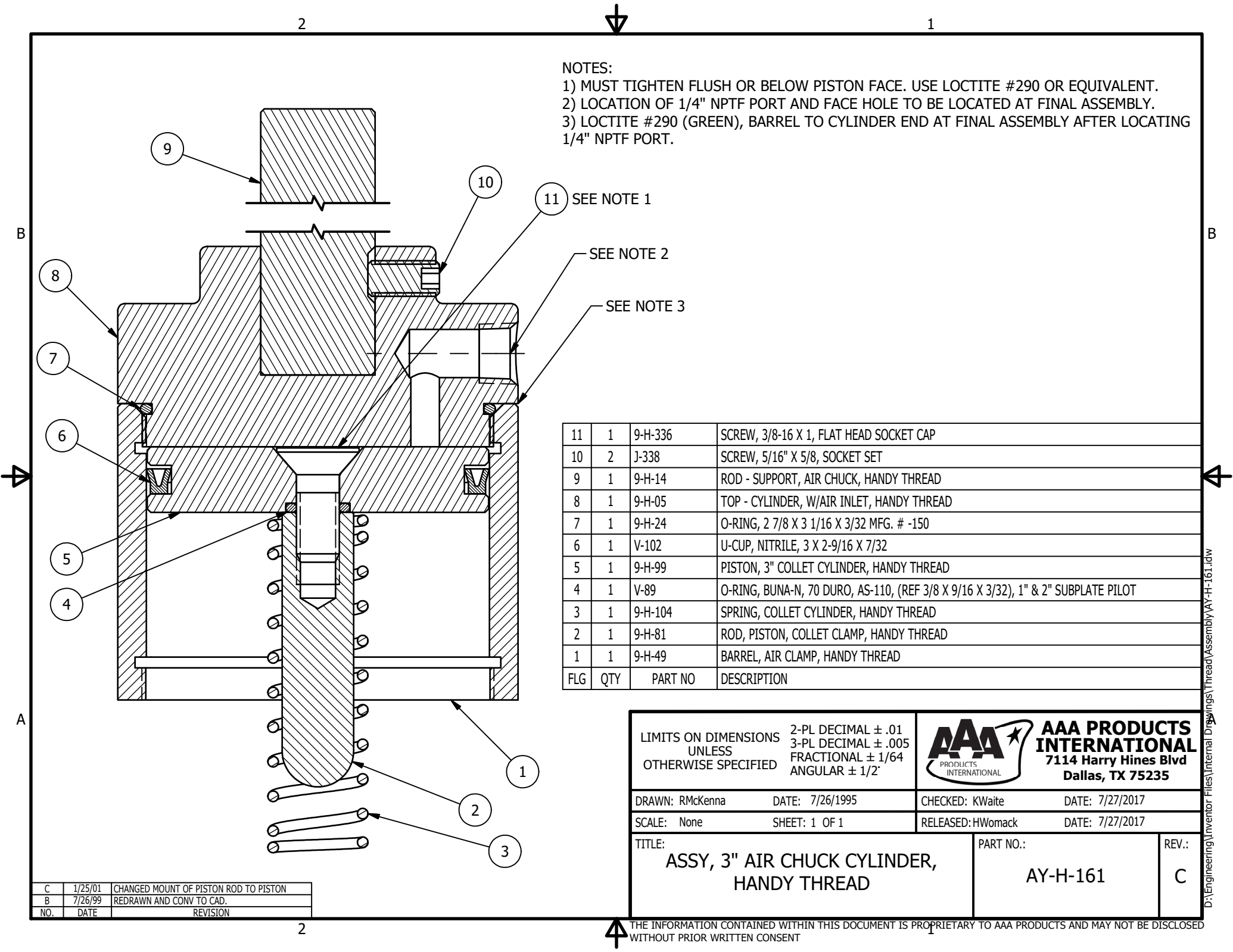


4	1	J-296	NUT, 1/4-20, HEX, PLATED
3	1	9-H-128	SCREW, 1/4-20 X 3/4, CUP POINT SOCKET SET
2	1	9-H-57	MAGNET, 1-1/16" X 1" ROUND, 18 LBS PULL FORCE
1	1	9-H-95	CARRIAGE STOP, HANDY THREAD
FLG	QTY	PART NO	DESCRIPTION

NOTES:
1) LOCTITE SCREW 1/2" REMAINING OUT OF MAGNET.

LIMITS ON DIMENSIONS UNLESS OTHERWISE SPECIFIED		2-PL DECIMAL ± .01 3-PL DECIMAL ± .005 FRACTIONAL ± 1/64 ANGULAR ± 1/2°		 AAA PRODUCTS INTERNATIONAL 7114 Harry Hines Blvd Dallas, TX 75235	
DRAWN: RMcKenna		DATE: 9/1/1995		CHECKED: KWaiter DATE: 3/13/2017	
SCALE: None		SHEET: 1 OF 1		RELEASED: HWomack DATE: 3/13/2017	
TITLE: ASSY, CARRIAGE STOP, HANDY THREAD				PART NO.: AY-H-180	
				REV.: A	


A	7/1/98	REVISED NOTE 1
NO.	DATE	REVISION

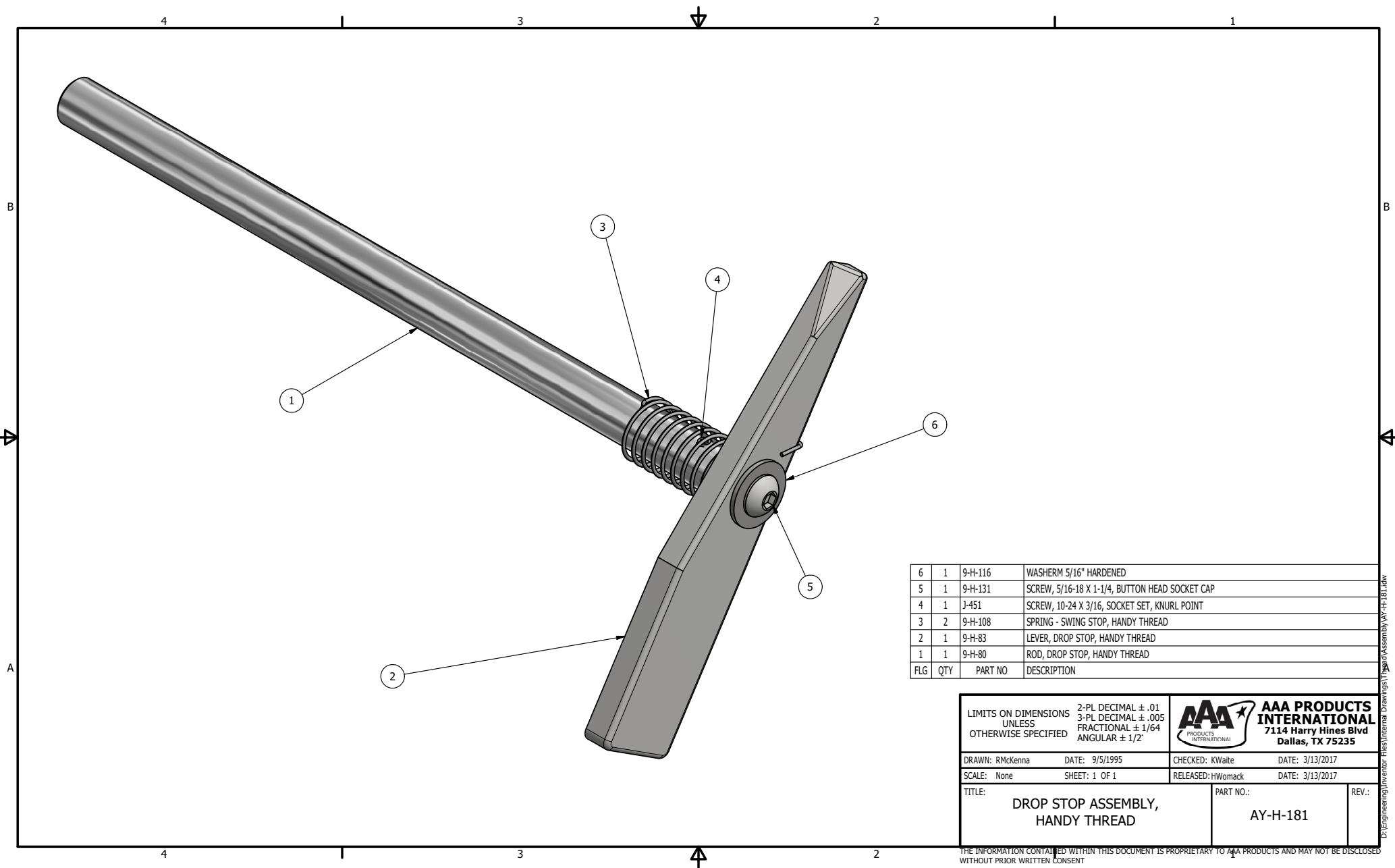


- NOTES:
- 1) MUST TIGHTEN FLUSH OR BELOW PISTON FACE. USE LOCTITE #290 OR EQUIVALENT.
 - 2) LOCATION OF 1/4" NPTF PORT AND FACE HOLE TO BE LOCATED AT FINAL ASSEMBLY.
 - 3) LOCTITE #290 (GREEN), BARREL TO CYLINDER END AT FINAL ASSEMBLY AFTER LOCATING 1/4" NPTF PORT.

11	1	9-H-336	SCREW, 3/8-16 X 1, FLAT HEAD SOCKET CAP
10	2	J-338	SCREW, 5/16" X 5/8, SOCKET SET
9	1	9-H-14	ROD - SUPPORT, AIR CHUCK, HANDY THREAD
8	1	9-H-05	TOP - CYLINDER, W/AIR INLET, HANDY THREAD
7	1	9-H-24	O-RING, 2 7/8 X 3 1/16 X 3/32 MFG. # -150
6	1	V-102	U-CUP, NITRILE, 3 X 2-9/16 X 7/32
5	1	9-H-99	PISTON, 3" COLLET CYLINDER, HANDY THREAD
4	1	V-89	O-RING, BUNA-N, 70 DURO, AS-110, (REF 3/8 X 9/16 X 3/32), 1" & 2" SUBPLATE PILOT
3	1	9-H-104	SPRING, COLLET CYLINDER, HANDY THREAD
2	1	9-H-81	ROD, PISTON, COLLET CLAMP, HANDY THREAD
1	1	9-H-49	BARREL, AIR CLAMP, HANDY THREAD
FLG	QTY	PART NO	DESCRIPTION

C	1/25/01	CHANGED MOUNT OF PISTON ROD TO PISTON
B	7/26/99	REDRAWN AND CONV TO CAD.
NO.	DATE	REVISION

LIMITS ON DIMENSIONS UNLESS OTHERWISE SPECIFIED		2-PL DECIMAL ± .01 3-PL DECIMAL ± .005 FRACTIONAL ± 1/64 ANGULAR ± 1/2°		 AAA PRODUCTS INTERNATIONAL 7114 Harry Hines Blvd Dallas, TX 75235	
DRAWN: RMcKenna		DATE: 7/26/1995		CHECKED: KWaitte	
SCALE: None		SHEET: 1 OF 1		DATE: 7/27/2017	
TITLE: ASSY, 3" AIR CHUCK CYLINDER, HANDY THREAD				PART NO.: AY-H-161	
				REV.: C	

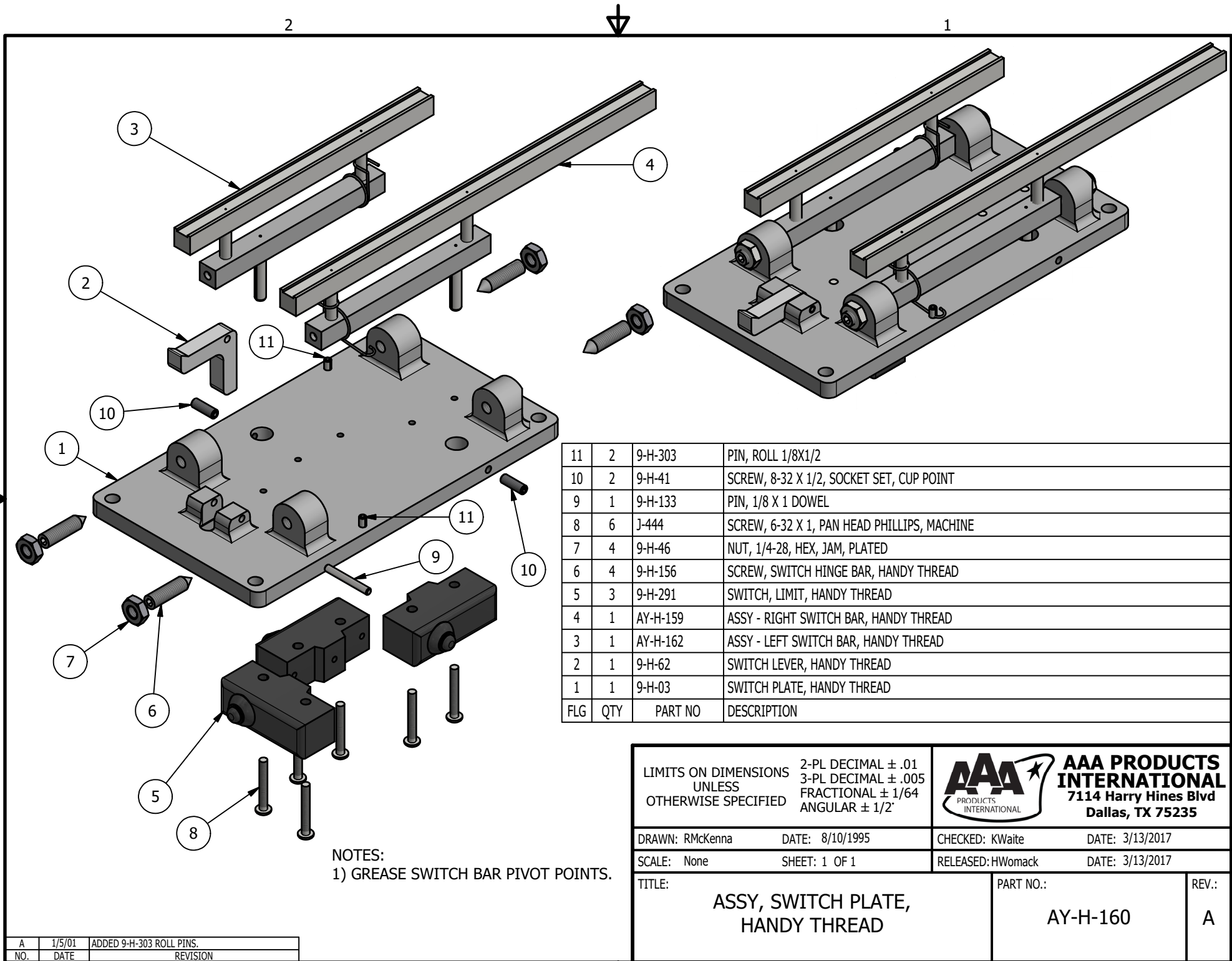


6	1	9-H-116	WASHER 5/16" HARDENED
5	1	9-H-131	SCREW, 5/16-18 X 1-1/4, BUTTON HEAD SOCKET CAP
4	1	J-451	SCREW, 10-24 X 3/16, SOCKET SET, KNURL POINT
3	2	9-H-108	SPRING - SWING STOP, HANDY THREAD
2	1	9-H-83	LEVER, DROP STOP, HANDY THREAD
1	1	9-H-80	ROD, DROP STOP, HANDY THREAD
FLG	QTY	PART NO	DESCRIPTION

LIMITS ON DIMENSIONS UNLESS OTHERWISE SPECIFIED		2-PL DECIMAL $\pm .01$ 3-PL DECIMAL $\pm .005$ FRACTIONAL $\pm 1/64$ ANGULAR $\pm 1/2^\circ$	AAA PRODUCTS INTERNATIONAL 7114 Harry Hines Blvd Dallas, TX 75235	
DRAWN: RMckenna	DATE: 9/5/1995	CHECKED: KWalte	DATE: 3/13/2017	
SCALE: None	SHEET: 1 OF 1	RELEASED: HWomack	DATE: 3/13/2017	
TITLE: DROP STOP ASSEMBLY, HANDY THREAD			PART NO.: AY-H-181	REV.:


THE INFORMATION CONTAINED WITHIN THIS DOCUMENT IS PROPRIETARY TO AAA PRODUCTS AND MAY NOT BE DISCLOSED WITHOUT PRIOR WRITTEN CONSENT

D:\Engineering\Inventory Files\Internal Drawings\1\Head Assembly\AY-H-181.dwg

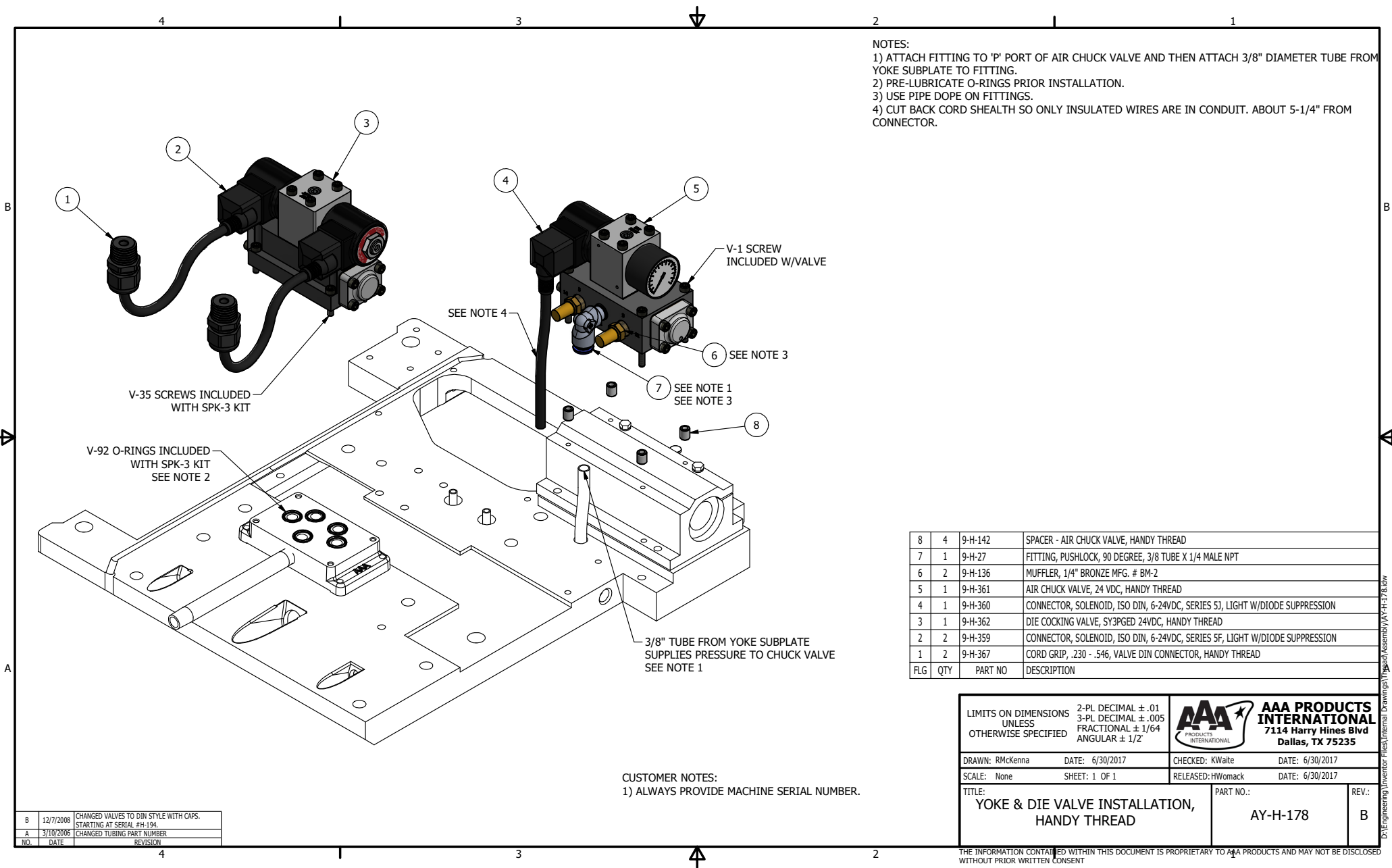


11	2	9-H-303	PIN, ROLL 1/8X1/2
10	2	9-H-41	SCREW, 8-32 X 1/2, SOCKET SET, CUP POINT
9	1	9-H-133	PIN, 1/8 X 1 DOWEL
8	6	J-444	SCREW, 6-32 X 1, PAN HEAD PHILLIPS, MACHINE
7	4	9-H-46	NUT, 1/4-28, HEX, JAM, PLATED
6	4	9-H-156	SCREW, SWITCH HINGE BAR, HANDY THREAD
5	3	9-H-291	SWITCH, LIMIT, HANDY THREAD
4	1	AY-H-159	ASSY - RIGHT SWITCH BAR, HANDY THREAD
3	1	AY-H-162	ASSY - LEFT SWITCH BAR, HANDY THREAD
2	1	9-H-62	SWITCH LEVER, HANDY THREAD
1	1	9-H-03	SWITCH PLATE, HANDY THREAD
FLG	QTY	PART NO	DESCRIPTION

NOTES:
1) GREASE SWITCH BAR PIVOT POINTS.


LIMITS ON DIMENSIONS UNLESS OTHERWISE SPECIFIED		2-PL DECIMAL ± .01 3-PL DECIMAL ± .005 FRACTIONAL ± 1/64 ANGULAR ± 1/2'		 AAA PRODUCTS INTERNATIONAL 7114 Harry Hines Blvd Dallas, TX 75235	
DRAWN: RMcKenna		DATE: 8/10/1995		CHECKED: KWaitte	
SCALE: None		SHEET: 1 OF 1		RELEASED: HWomack	
TITLE: ASSY, SWITCH PLATE, HANDY THREAD				PART NO.: AY-H-160	
				REV.: A	

A	1/5/01	ADDED 9-H-303 ROLL PINS.
NO.	DATE	REVISION



- NOTES:
- 1) ATTACH FITTING TO 'P' PORT OF AIR CHUCK VALVE AND THEN ATTACH 3/8" DIAMETER TUBE FROM YOKE SUBPLATE TO FITTING.
 - 2) PRE-LUBRICATE O-RINGS PRIOR INSTALLATION.
 - 3) USE PIPE DOPE ON FITTINGS.
 - 4) CUT BACK CORD SHEATH SO ONLY INSULATED WIRES ARE IN CONDUIT. ABOUT 5-1/4" FROM CONNECTOR.

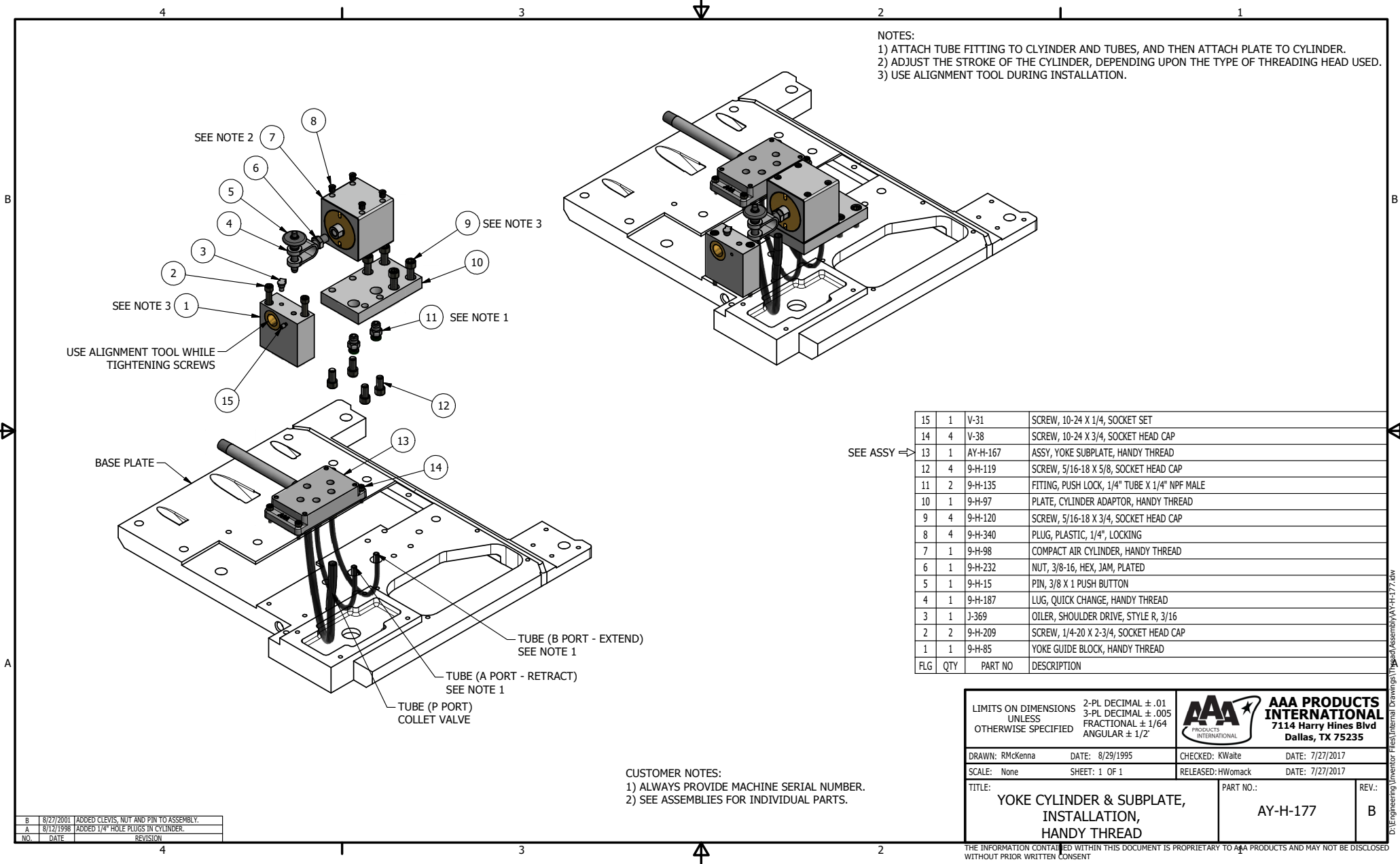
8	4	9-H-142	SPACER - AIR CHUCK VALVE, HANDY THREAD
7	1	9-H-27	FITTING, PUSHLOCK, 90 DEGREE, 3/8 TUBE X 1/4 MALE NPT
6	2	9-H-136	MUFFLER, 1/4" BRONZE MFG. # BM-2
5	1	9-H-361	AIR CHUCK VALVE, 24 VDC, HANDY THREAD
4	1	9-H-360	CONNECTOR, SOLENOID, ISO DIN, 6-24VDC, SERIES 5J, LIGHT W/DIODE SUPPRESSION
3	1	9-H-362	DIE COCKING VALVE, SY3PGED 24VDC, HANDY THREAD
2	2	9-H-359	CONNECTOR, SOLENOID, ISO DIN, 6-24VDC, SERIES 5F, LIGHT W/DIODE SUPPRESSION
1	2	9-H-367	CORD GRIP, .230 - .546, VALVE DIN CONNECTOR, HANDY THREAD
FLG	QTY	PART NO	DESCRIPTION

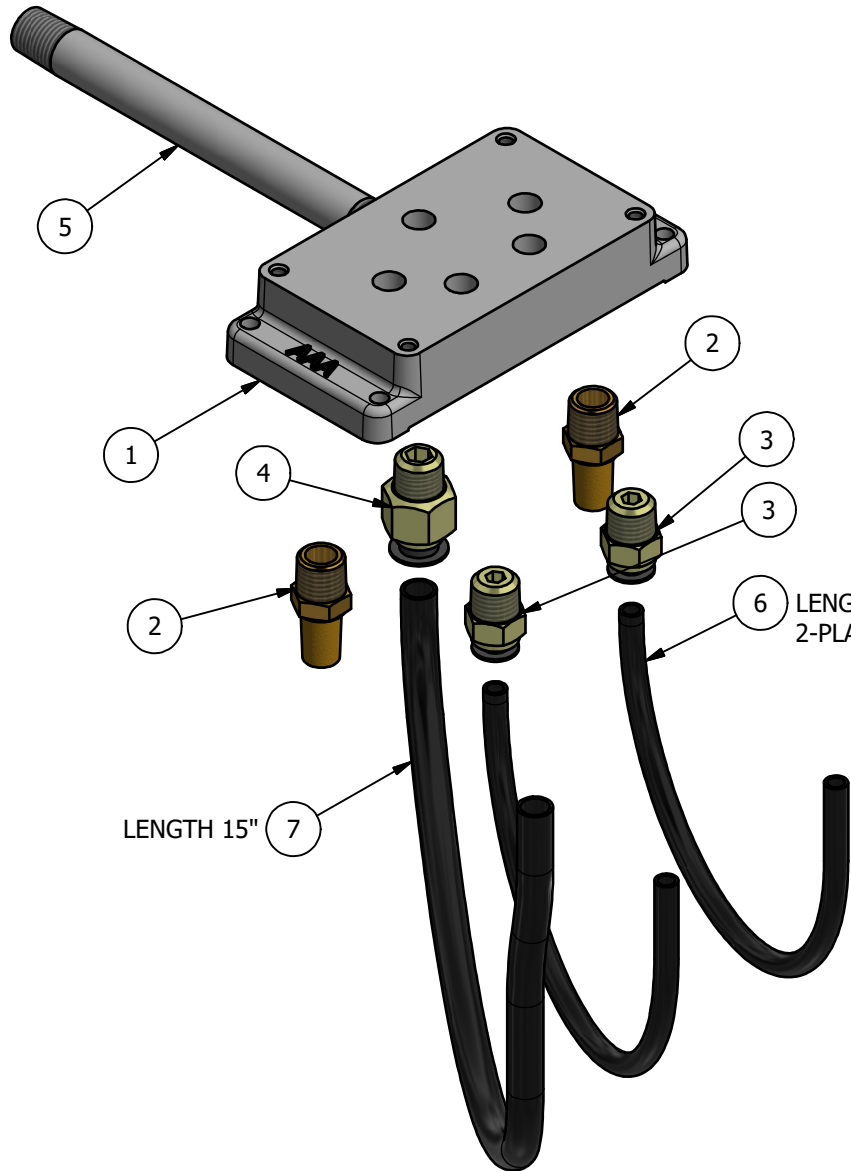
LIMITS ON DIMENSIONS UNLESS OTHERWISE SPECIFIED		2-PL DECIMAL ± .01 3-PL DECIMAL ± .005 FRACTIONAL ± 1/64 ANGULAR ± 1/2°		 AAA PRODUCTS INTERNATIONAL 7114 Harry Hines Blvd Dallas, TX 75235	
DRAWN: RMckenna		DATE: 6/30/2017		CHECKED: KWaitte	
SCALE: None		SHEET: 1 OF 1		RELEASED: HWomack	
TITLE: YOKE & DIE VALVE INSTALLATION, HANDY THREAD				PART NO.: AY-H-178	
				REV.: B	

CUSTOMER NOTES:
1) ALWAYS PROVIDE MACHINE SERIAL NUMBER.

B	12/7/2006	CHANGED VALVES TO DIN STYLE WITH CAPS. STARTING AT SERIAL #H-194
A	3/10/2006	CHANGED TUBING PART NUMBER
NO.	DATE	REVISION


THE INFORMATION CONTAINED WITHIN THIS DOCUMENT IS PROPRIETARY TO AAA PRODUCTS AND MAY NOT BE DISCLOSED WITHOUT PRIOR WRITTEN CONSENT

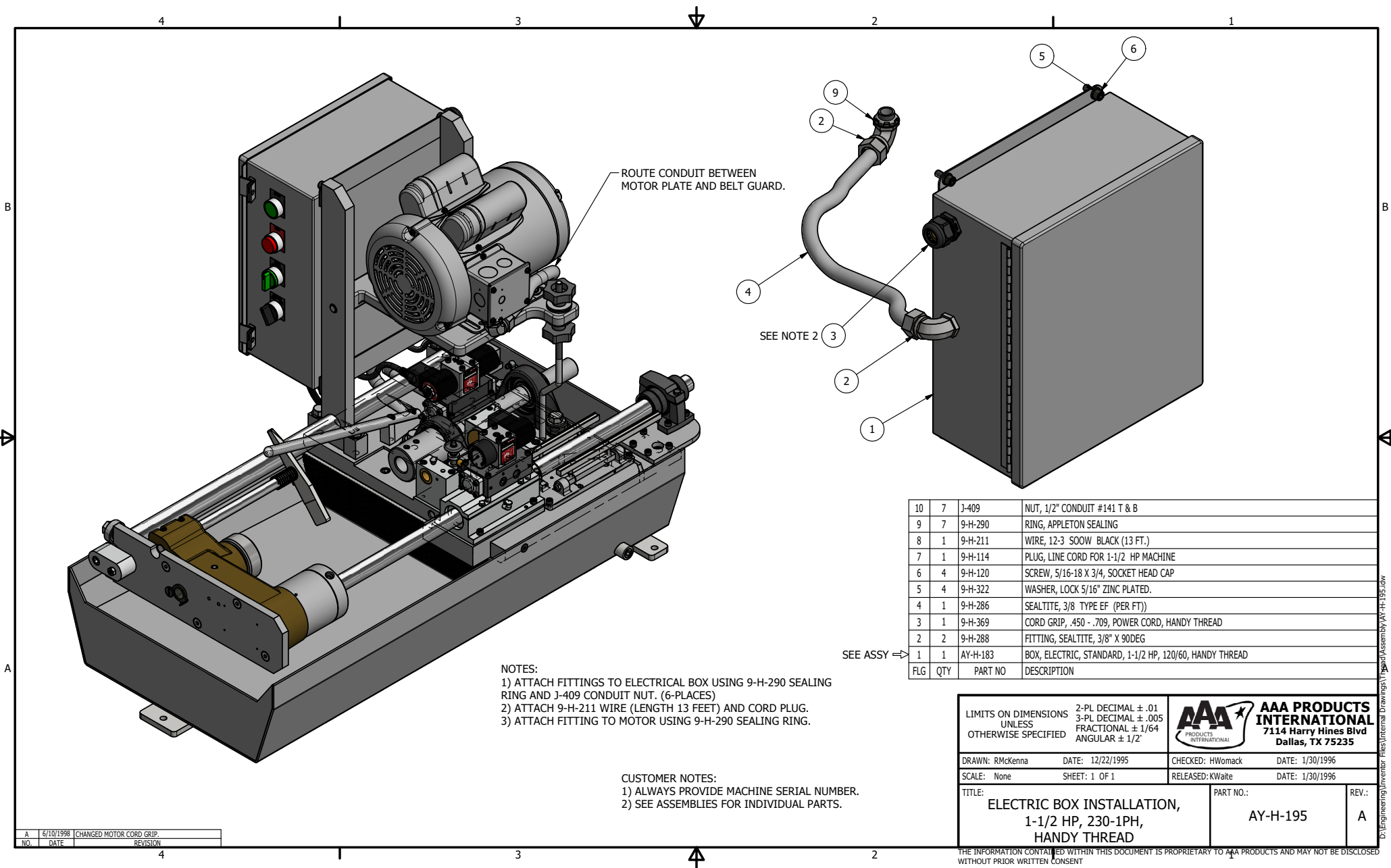


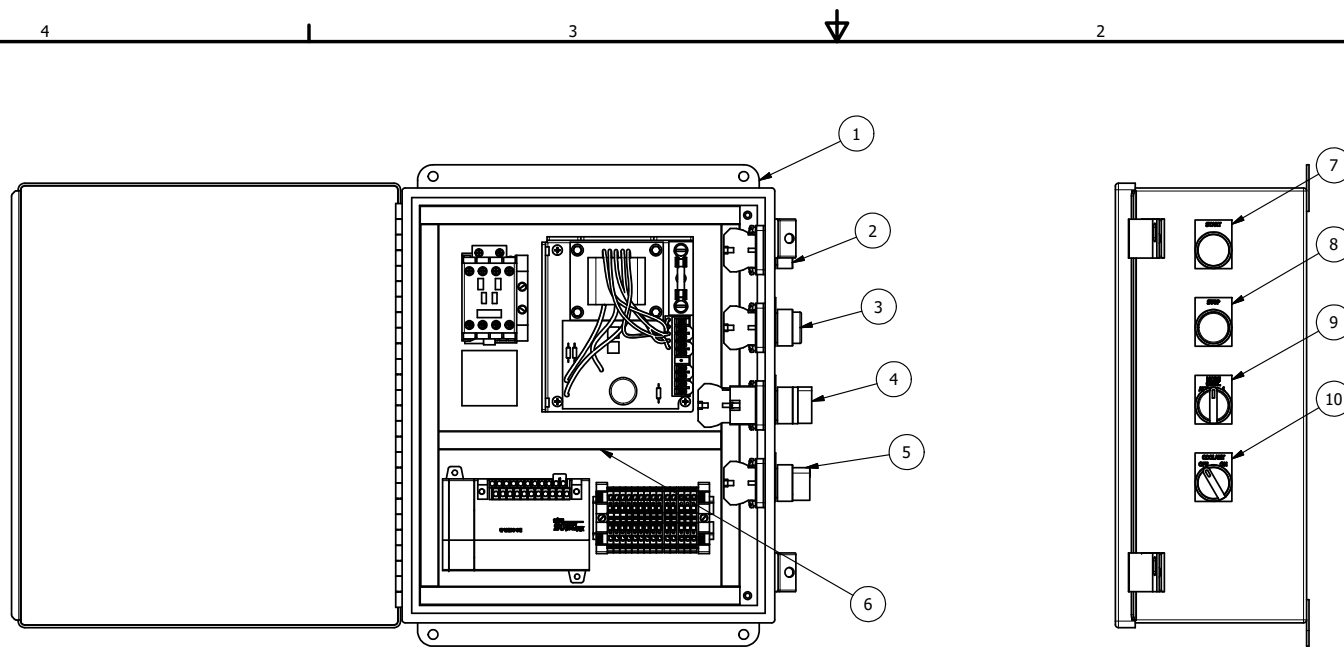


NOTES:
1) USE PIPE DOPE DURING INSTALLATION OF FITTINGS AND NIPPLE.

7	1	9-H-33	TUBING, 3/8" BLACK POLY-FLO
6	2	9-H-34	TUBING, 1/4" BLACK POLY-FLO
5	1	9-H-199	NIPPLE, 1/4" X 5-1/2" PLATED
4	1	9-H-28	FITTING, 3/8" PUSH LOCK TUBE X 1/4" MALE NPT
3	2	9-H-29	FITTING, 1/4" PUSH LOCK TUBE X 1/4" MALE NPT
2	2	9-H-136	MUFFLER, 1/4" BRONZE MFG. # BM-2
1	1	9-H-171	MODIFIED SUBPLATE SP2-1N, HANDY THREAD
FLG	QTY	PART NO	DESCRIPTION

LIMITS ON DIMENSIONS UNLESS OTHERWISE SPECIFIED		2-PL DECIMAL ± .01 3-PL DECIMAL ± .005 FRACTIONAL ± 1/64 ANGULAR ± 1/2°		 AAA PRODUCTS INTERNATIONAL 7114 Harry Hines Blvd Dallas, TX 75235	
DRAWN: RMcKenna		DATE: 8/15/1995		CHECKED: KWaitte	
SCALE: None		SHEET: 1 OF 1		RELEASED: HWomack	
DATE: 3/13/2017		DATE: 3/13/2017		DATE: 3/13/2017	
TITLE: ASSY, YOKE SUBPLATE, HANDY THREAD				PART NO.: AY-H-167	
				REV.:	





SEE ASSY ⇒

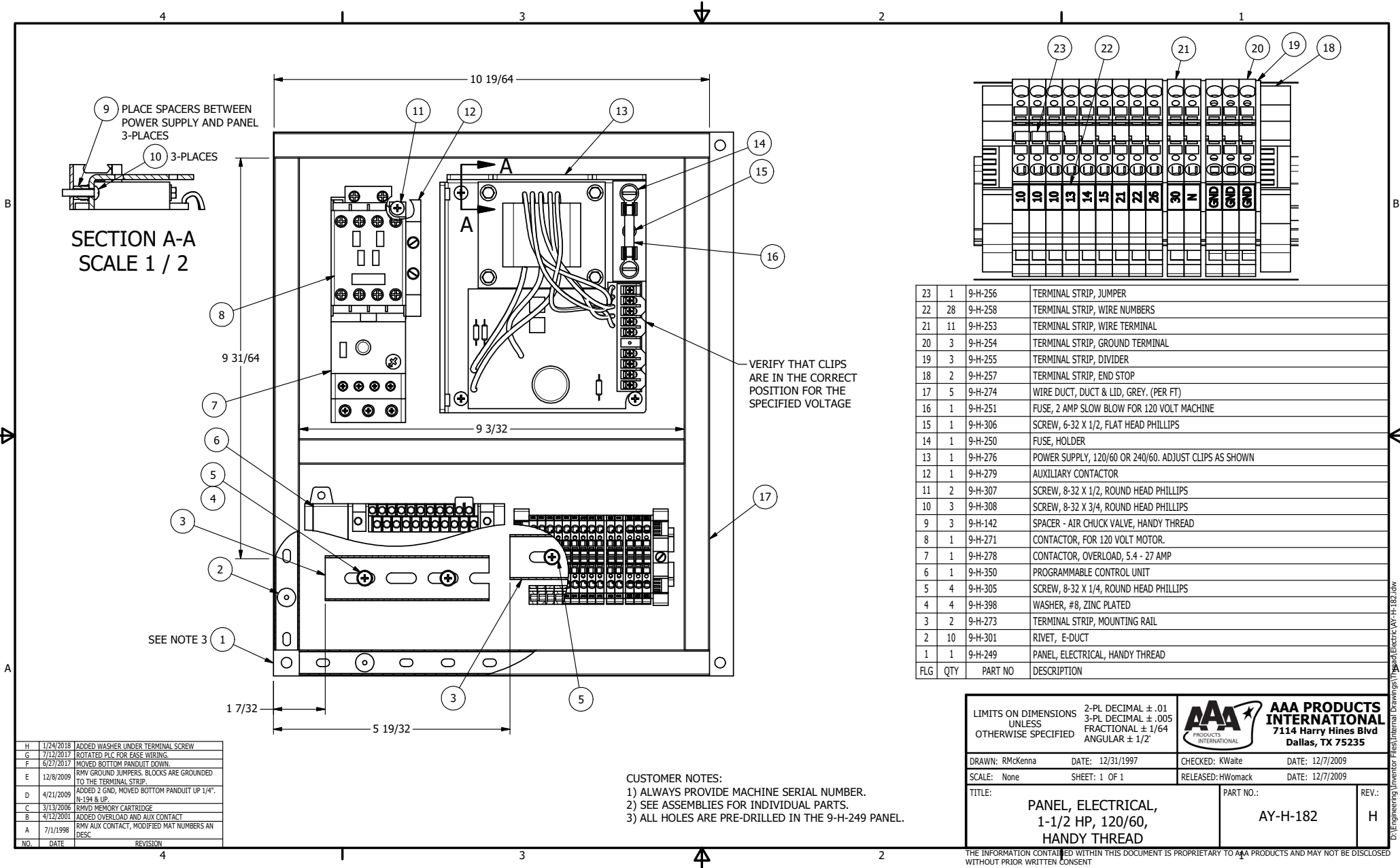
10	1	9-H-267	LEGEND PLATE, COOLANT, HANDY THREAD
9	1	9-H-268	LEGEND PLATE, MODE, HANDY THREAD
8	1	9-H-269	LEGEND PLATE, STOP, HANDY THREAD
7	1	9-H-270	LEGEND PLATE, START, HANDY THREAD
6	1	AY-H-182	PANEL, ELECTRICAL, 1-1/2 HP, 120/60, HANDY THREAD
5	1	9-H-259	SWITCH, COOLANT 2-POSITION SELECTOR
4	1	9-H-348	SWITCH, 2 POSITION LIGHT SELECTOR WITH LED BULB
3	1	9-H-261	SWITCH, RED STOP W/ N.C. CONTACT
2	1	9-H-262	SWITCH, GREEN START BUTTON
1	1	9-H-248	ENCLOSURE, ELECTRICAL, HANDY THREAD
FLG	QTY	PART NO	DESCRIPTION

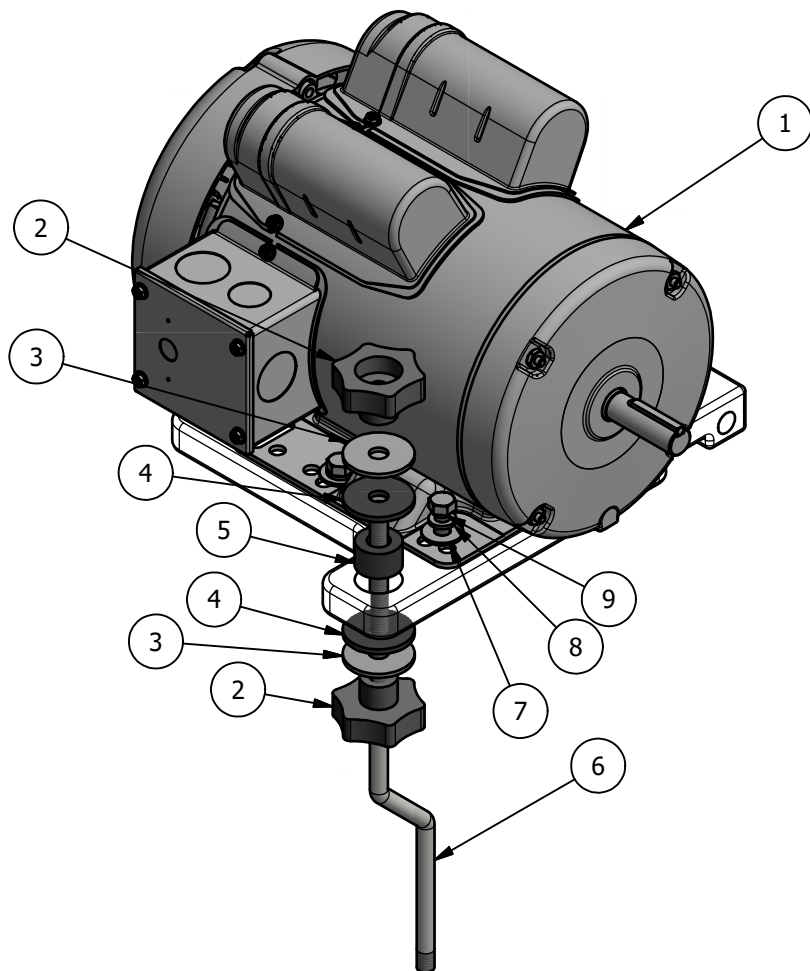
F	7/12/2017	ADDED 9-H-182 TO ASSEMBLY, CHNGD TITLE.
E	10/18/2006	MADE SWITCHES AS SINGLE ASSEMBLIES. CHANGED TO AUTOMATION DIRECT. H-192 & UP.
D	3/13/2006	RMVD PANEL DETAIL, CREATED STD BOX
C	11/30/2001	CHNG MODE FRM 3 POS, RMVD CONT
B	5/31/2000	ADDED 230VAC-3PH NOTE, UPD DRW # 1N NOTES
A	7/1/1998	RMV AUX CONTACT, MODIFIED SWITCH SPACING
NO.	DATE	REVISION

CUSTOMER NOTES:
1) ALWAYS PROVIDE MACHINE SERIAL NUMBER.
2) SEE ASSEMBLIES FOR INDIVIDUAL PARTS.

LIMITS ON DIMENSIONS UNLESS OTHERWISE SPECIFIED		2-PL DECIMAL $\pm .01$ 3-PL DECIMAL $\pm .005$ FRACTIONAL $\pm 1/64$ ANGULAR $\pm 1/2^\circ$	AAA PRODUCTS INTERNATIONAL 7114 Harry Hines Blvd Dallas, TX 75235
DRAWN: RMckenna	DATE: 9/8/1995	CHECKED: KWaite	DATE: 10/18/2006
SCALE: None	SHEET: 1 OF 1	RELEASED: HWomack	DATE: 10/18/2006
TITLE: BOX, ELECTRIC, STANDARD, 1-1/2 HP, 120/60, HANDY THREAD		PART NO.: AY-H-183	REV.: F

THE INFORMATION CONTAINED WITHIN THIS DOCUMENT IS PROPRIETARY TO AAA PRODUCTS AND MAY NOT BE DISCLOSED WITHOUT PRIOR WRITTEN CONSENT





9	4	9-H-205	BOLT, 5/16-18 X 3/4, HEX HEAD, PLATED
8	4	9-H-322	WASHER, LOCK 5/16" ZINC PLATED.
7	4	9-H-206	WASHER, 5/16" FLAT PLATED
6	1	9-H-93	ROD, MOTOR MOUNT SUPPORT, HANDY THREAD
5	1	9-H-26	BUSHING, RUBBER FOR MOTOR
4	2	9-H-311	WASHER, NEOPRENE RUBBER, 1-1/2 X 3/8 X 1/8, SEE MSB2
3	2	9-H-37	WASHER, FENDER 3/8 X 1 1/2
2	2	9-H-55	KNOB, 3/8-16
1	1	9-H-73	MOTOR, 1-1/2 HP 120/240 V TEFC 1 PHASE 1725 RPM
FLG	QTY	PART NO	DESCRIPTION

LIMITS ON DIMENSIONS
UNLESS
OTHERWISE SPECIFIED

2-PL DECIMAL $\pm .01$
3-PL DECIMAL $\pm .005$
FRACTIONAL $\pm 1/64$
ANGULAR $\pm 1/2^\circ$



**AAA PRODUCTS
INTERNATIONAL**
7114 Harry Hines Blvd
Dallas, TX 75235

DRAWN: RMcKenna

DATE: 7/6/2017

CHECKED: KWaitte

DATE: 7/6/2017

SCALE: None

SHEET: 1 OF 1

RELEASED: HWomack

DATE: 7/6/2017

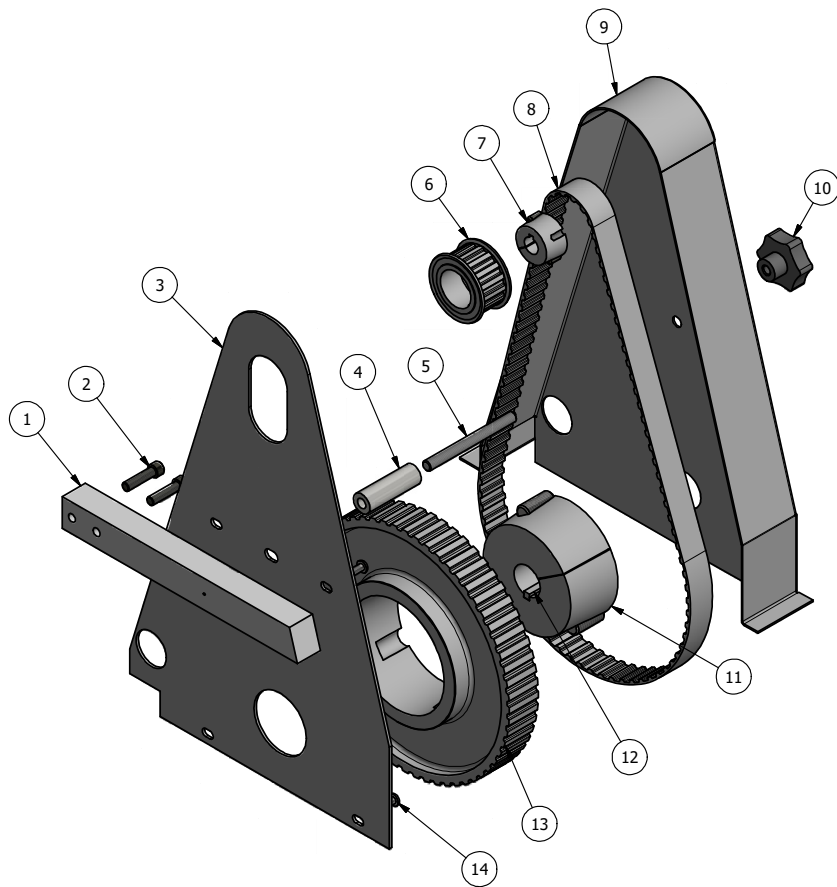
TITLE:

**MOTOR INSTALLATION,
1-1/2 HP, 120-240/60, 1725 RPM,
HANDY THREAD**

PART NO.:

AY-H-184

REV.:




SEE NOTE 3 ⇒	14	4	9-H-47	SCREW, 1/4-20 X 1/2, BUTTON HEAD SOCKET CAP
	13	1	9-H-221-60	PULLEY, TAPER LOCK, H100, 60 PITCH, 9.549 PD, HANDY THREAD
SEE NOTE 3 ⇒	12	1	9-H-10	KEY, 1/4" X 2"
	11	1	9-H-224	BUSHING, TAPER LOCK, #3020X1-3/16,
	10	1	9-H-55	KNOB, 3/8-16
	9	1	9-H-65	GUARD, BELT, HANDY THREAD
SEE NOTE 3 ⇒	8	1	445H100	BELT, SYNCHRONOUS, TIMING, H (.500) PITCH, 89 TEETH, 445H100, HANDY THREAD
SEE NOTE 3 ⇒	7	1	9-H-223	BUSHING, TAPER LOCK, #1108X5/8, HANDY THREAD
SEE NOTE 3 ⇒	6	1	9-H-221-14	PULLEY, TAPER LOCK, H100, 14 PITCH, 2.228 PD, HANDY THREAD
	5	1	9-H-357	STUD, BELT GUARD, ATTACHMENT, HANDY THREAD
	4	1	9-H-356	SPACER, BELT GUARD, ATTACHMENT, HANDY THREAD
	3	1	9-H-66	PLATE, BACK, BELT GUARD, HANDY THREAD
	2	2	V-402	SCREW, 5/16-18 X 1-1/4, SOCKET HEAD CAP
	1	1	9-H-96	BAR, BACK MOUNTING, GUARD, HANDY THREAD
FLG	QTY		PART NO	DESCRIPTION

CUSTOMER NOTES:

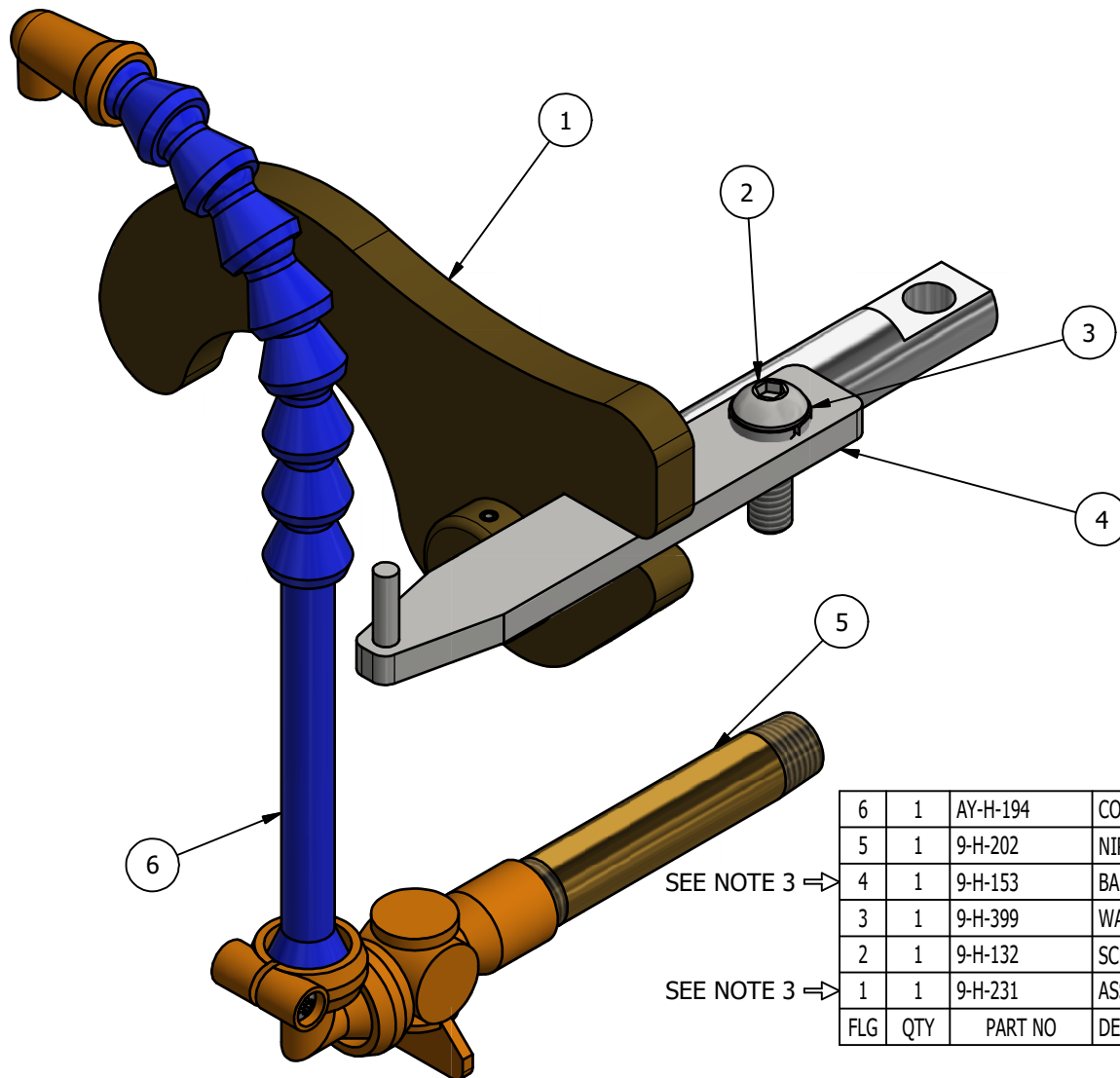
- 1) ALWAYS PROVIDE MACHINE SERIAL NUMBER.
- 2) SEE ASSEMBLIES FOR INDIVIDUAL PARTS.
- 3) THESE PARTS ARE MACHINE SPECIFIC AND MUST MATCH THE SERIAL NUMBER OF THE MACHINE. PLEASE CONSULT FACTORY PRIOR ORDER PARTS.

C	9/11/2017	ADDED RATIO TO PART NUMBER
B	3/19/2007	CHANGED GUARD SPACER TO A 2-PIECE
A	7/1/1998	MODIFIED SWITCH SPACING
NO.	DATE	REVISION

LIMITS ON DIMENSIONS UNLESS OTHERWISE SPECIFIED		2-PL DECIMAL ± .01 3-PL DECIMAL ± .005 FRACTIONAL ± 1/64 ANGULAR ± 1/2°		 AAA PRODUCTS INTERNATIONAL 7114 Harry Hines Blvd Dallas, TX 75235	
DRAWN: RMckenna		DATE: 7/7/2017		CHECKED: KWaitte	
SCALE: None		SHEET: 1 OF 1		DATE: 7/7/2017	
TITLE:		PART NO.:		REV.:	
BELT INSTALLATION, 1-1/2 HP, 0.23 RATIO, 445H100 BELT, HANDY THREAD		AY-H-219-023		C	

THE INFORMATION CONTAINED WITHIN THIS DOCUMENT IS PROPRIETARY TO AAA PRODUCTS AND MAY NOT BE DISCLOSED WITHOUT PRIOR WRITTEN CONSENT

C:\Engineering\Inventor Files\Head Assembly\AY-H-219-023.dwg



SEE NOTE 3 ⇒

SEE NOTE 3 ⇒

6	1	AY-H-194	COOLANT HOSE, HANDY THREAD
5	1	9-H-202	NIPPLE, 1/4" X 3" BRASS
4	1	9-H-153	BAR, DIE YOKE LATCH, (SPECIFY HEAD AND ADAPTOR), HANDY THREAD
3	1	9-H-399	WASHER, LOCK 5/16" ZINC PLATED, LOCKING FEATURE REMOVED
2	1	9-H-132	SCREW, 5/16-18 X 1, BUTTON HEAD SOCKET CAP
1	1	9-H-231	ASSY - YOKE, QUICK CHANGE, SPECIFY HEAD, HANDY THREAD
FLG	QTY	PART NO	DESCRIPTION

CUSTOMER NOTES:

- 1) ALWAYS PROVIDE MACHINE SERIAL NUMBER.
- 2) SEE ASSEMBLIES FOR INDIVIDUAL PARTS.
- 3) THESE PARTS ARE MACHINE SPECIFIC AND MUST MATCH THE SERIAL NUMBER OF THE MACHINE. PLEASE CONSULT FACTORY PRIOR ORDER PARTS.

A	7/1/1998	MODIFEID SWITCH SPACING.
NO.	DATE	REVISION

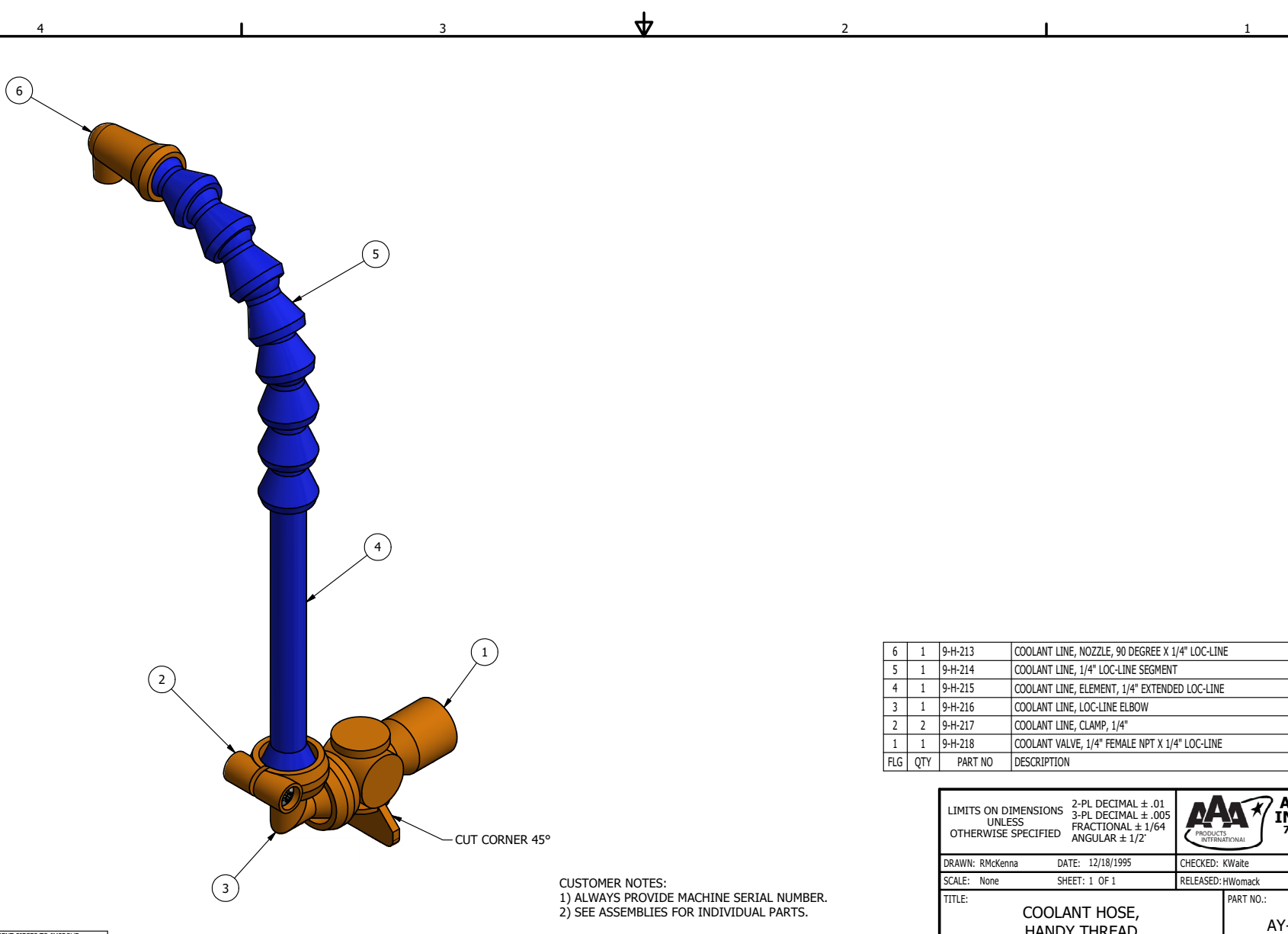
LIMITS ON DIMENSIONS
UNLESS
OTHERWISE SPECIFIED

2-PL DECIMAL $\pm .01$
3-PL DECIMAL $\pm .005$
FRACTIONAL $\pm 1/64$
ANGULAR $\pm 1/2^\circ$




**AAA PRODUCTS
INTERNATIONAL**
7114 Harry Hines Blvd
Dallas, TX 75235

DRAWN: RMckenna	DATE: 9/28/2017	CHECKED: KWait	DATE: 9/28/2017
SCALE: None	SHEET: 1 OF 1	RELEASED: HWomack	DATE: 9/28/2017
TITLE: YOKE & COOLANT INTSL, 1-1/2" DRIVE SHAFT, HANDY THREAD		PART NO.: AY-H-394	REV.: A



CUSTOMER NOTES:
1) ALWAYS PROVIDE MACHINE SERIAL NUMBER.
2) SEE ASSEMBLIES FOR INDIVIDUAL PARTS.

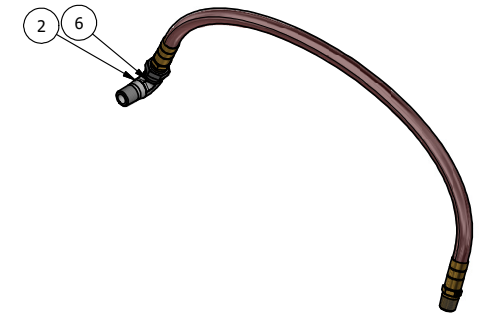
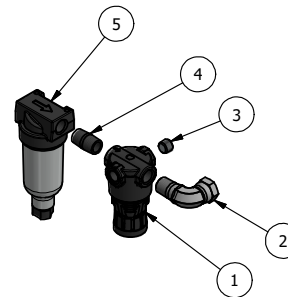
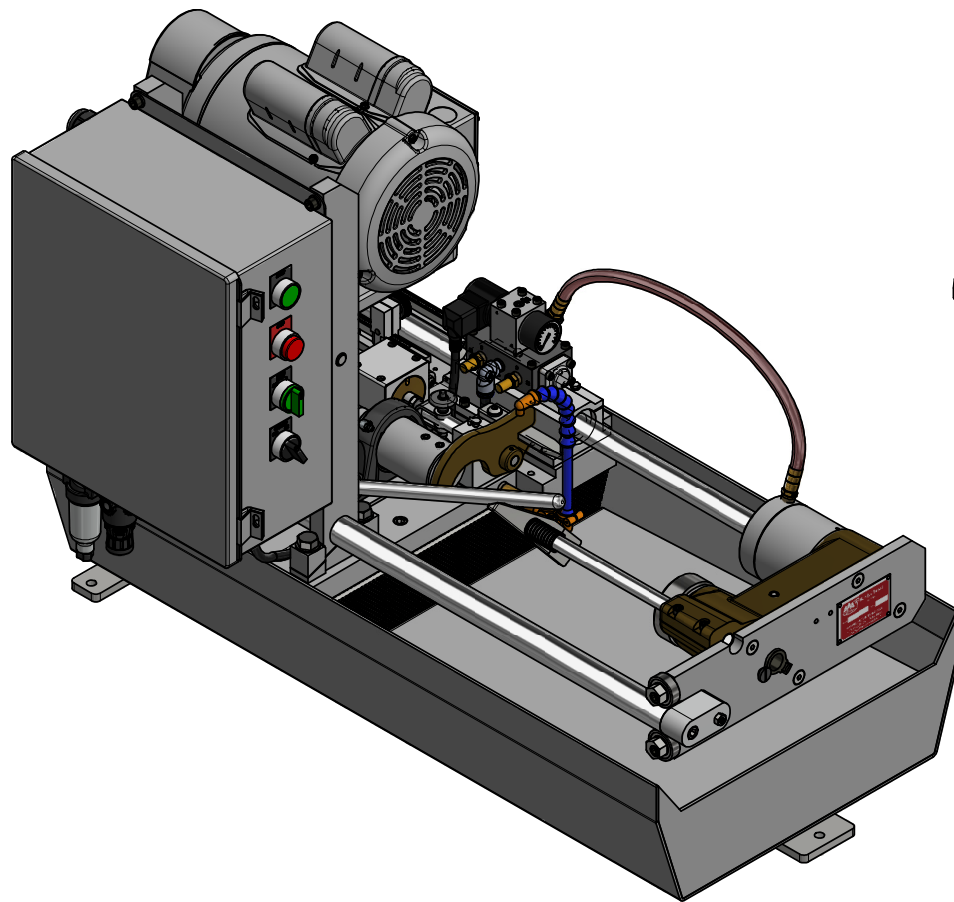
6	1	9-H-213	COOLANT LINE, NOZZLE, 90 DEGREE X 1/4" LOC-LINE
5	1	9-H-214	COOLANT LINE, 1/4" LOC-LINE SEGMENT
4	1	9-H-215	COOLANT LINE, ELEMENT, 1/4" EXTENDED LOC-LINE
3	1	9-H-216	COOLANT LINE, LOC-LINE ELBOW
2	2	9-H-217	COOLANT LINE, CLAMP, 1/4"
1	1	9-H-218	COOLANT VALVE, 1/4" FEMALE NPT X 1/4" LOC-LINE
FLG	QTY	PART NO	DESCRIPTION

LIMITS ON DIMENSIONS UNLESS OTHERWISE SPECIFIED		2-PL DECIMAL ± .01 3-PL DECIMAL ± .005 FRACTIONAL ± 1/64 ANGULAR ± 1/2°		 AAA PRODUCTS INTERNATIONAL 7114 Harry Hines Blvd Dallas, TX 75235	
DRAWN: RMckenna		DATE: 12/18/1995		CHECKED: KWalte	
SCALE: None		SHEET: 1 OF 1		DATE: 3/13/2017	
TITLE: COOLANT HOSE, HANDY THREAD				PART NO.: AY-H-194	
				REV.: A	

A	7/31/98	RMV 2 HOSE SEGMENT PIECES TO IMPROVE COOLANT DIRECTION.
NO.	DATE	REVISION

THE INFORMATION CONTAINED WITHIN THIS DOCUMENT IS PROPRIETARY TO AAA PRODUCTS AND MAY NOT BE DISCLOSED WITHOUT PRIOR WRITTEN CONSENT


P:\Engineering\Inventor Files\Internal Drawings\Lead Assembly\AY-H-194.dwg



6	1	9-H-370	HOSE, CHUCK CYLINDER, HANDY THREAD
5	1	9-H-76	FILTER, AIR INLET
4	1	9-H-200	NIPPLE, 1/4" HEX BRASS
3	1	V-19	PLUG, SOCKET PIPE 1/8" NPT (#601-3 PITTSBURG PLUG PART #.)
2	2	9-H-35	FITTING, 90 DEGREE SWIVEL, 1/4" NPT MALE X 1/4" NPT FEMALE
1	1	9-H-74	REGULATOR
FLG	QTY	PART NO	DESCRIPTION

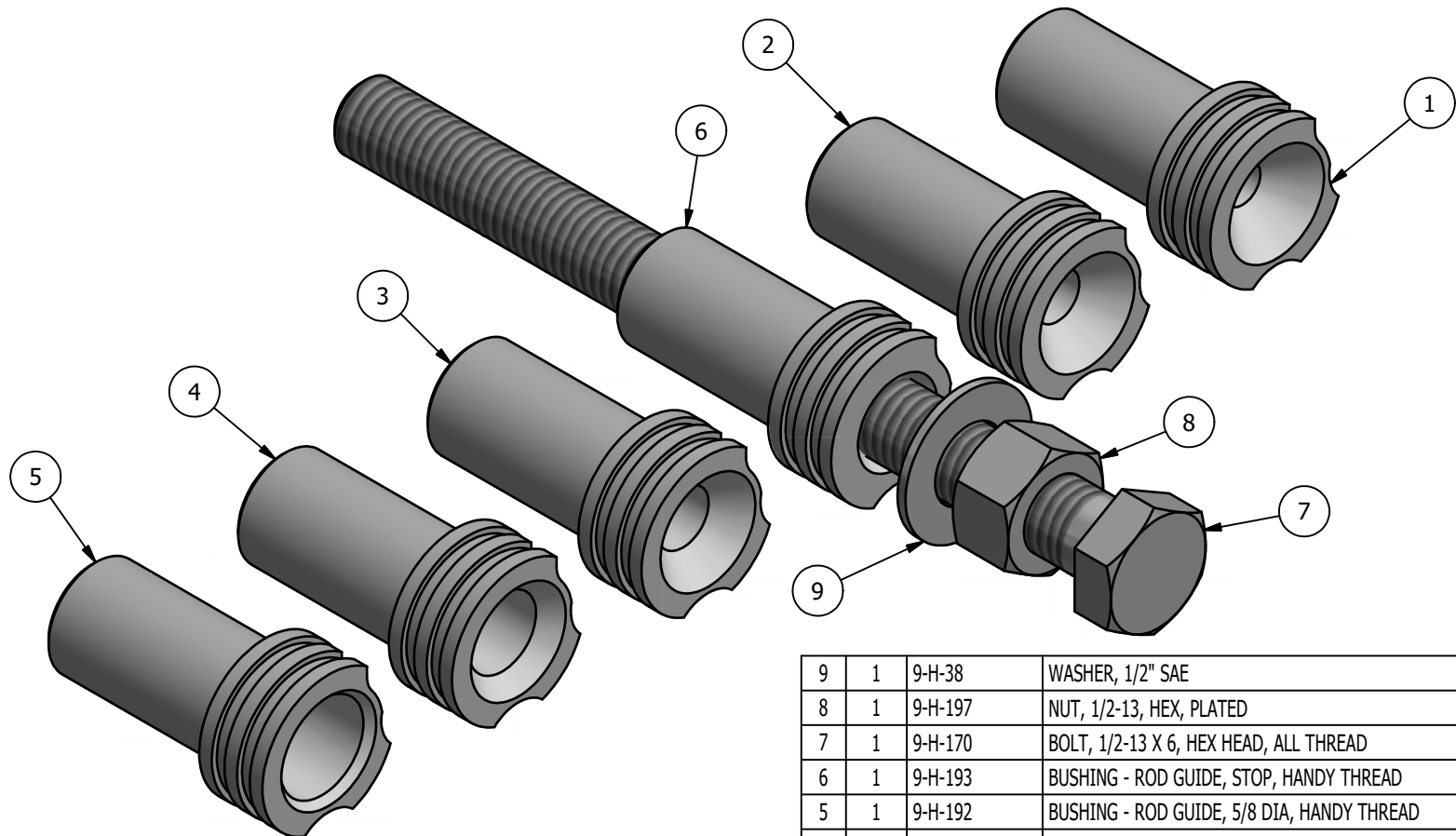
CUSTOMER NOTES:
 1) ALWAYS PROVIDE MACHINE SERIAL NUMBER.
 2) SEE ASSEMBLIES FOR INDIVIDUAL PARTS.

B	12/03/2001	CHNGD ITEM 3 FROM 9-H-35 STRAIGHT
A	7/1/1998	MODIFIED SWITCH SPACING
NO.	DATE	REVISION

LIMITS ON DIMENSIONS UNLESS OTHERWISE SPECIFIED		2-PL DECIMAL $\pm .01$ 3-PL DECIMAL $\pm .005$ FRACTIONAL $\pm 1/64$ ANGULAR $\pm 1/2^\circ$		 AAA PRODUCTS INTERNATIONAL 7114 Harry Hines Blvd Dallas, TX 75235	
DRAWN: RMckenna	DATE: 1/2/1995	CHECKED: HWomack	DATE: 1/29/1996		
SCALE: None	SHEET: 1 OF 1	RELEASED: KWaite	DATE: 1/29/1996		
TITLE: AIR LINE INSTALLATION, HANDY THREAD				PART NO.: AY-H-226	REV.: B

THE INFORMATION CONTAINED WITHIN THIS DOCUMENT IS PROPRIETARY TO AAA PRODUCTS AND MAY NOT BE DISCLOSED WITHOUT PRIOR WRITTEN CONSENT

C:\Engineering\Inventor Files\Internal Drawings\Head Assembly\AY-H-226.dwg



9	1	9-H-38	WASHER, 1/2" SAE
8	1	9-H-197	NUT, 1/2-13, HEX, PLATED
7	1	9-H-170	BOLT, 1/2-13 X 6, HEX HEAD, ALL THREAD
6	1	9-H-193	BUSHING - ROD GUIDE, STOP, HANDY THREAD
5	1	9-H-192	BUSHING - ROD GUIDE, 5/8 DIA, HANDY THREAD
4	1	9-H-191	BUSHING - ROD GUIDE, 1/2 DIA, HANDY THREAD
3	1	9-H-190	BUSHING - ROD GUIDE, 3/8 DIA, HANDY THREAD
2	1	9-H-189	BUSHING - ROD GUIDE, 5/16 DIA, HANDY THREAD
1	1	9-H-188	BUSHING - ROD GUIDE, 1/4 DIA, HANDY THREAD
FLG	QTY	PART NO	DESCRIPTION

LIMITS ON DIMENSIONS
UNLESS
OTHERWISE SPECIFIED

2-PL DECIMAL $\pm .01$
3-PL DECIMAL $\pm .005$
FRACTIONAL $\pm 1/64$
ANGULAR $\pm 1/2^\circ$



**AAA PRODUCTS
INTERNATIONAL**
7114 Harry Hines Blvd
Dallas, TX 75235

DRAWN: RMcKenna

DATE: 9/13/2017

CHECKED: KWaitte

DATE: 9/13/2017

SCALE: None

SHEET: 1 OF 1

RELEASED: HWomack

DATE: 9/13/2017

TITLE:

**KIT, BUSHING, ROD GUIDE,
HANDY THREAD**

PART NO.:

AY-H-GBK

REV.: